



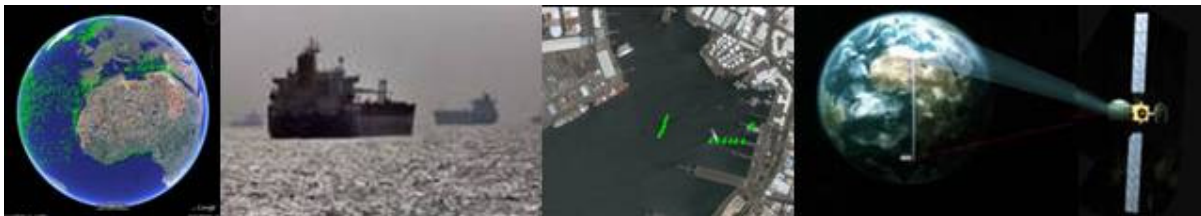
in cooperation with



Institute of  
Space Systems



Flight  
Operations



### Technical Note TN-11-3:

### Drawing Tree

Preparatory Action for Assessment of the Capacity of Spaceborne Automatic Identification System Receivers to Support EU Maritime Policy

<b>Receiver Drawing Tree</b>	<i>Doc. N°</i> <b>TN-11-3</b>
	<i>Issue:</i> <b>1</b> <i>Date:</i> <b>07.04.2010</b>
	<i>Page:</i> <b>2</b> of <b>4</b>

<i>Doc.Type:</i> <b>Technical Note</b>		<i>DRD N°</i> <b>TN-11-3</b>	
<i>Doc. N°</i> <b>TN-11-3</b>	<i>Issue:</i> <b>1</b>	<i>Date:</i> <b>07.04.10</b>	<i>Page</i> <b>2</b> <i>Of</i> <b>4</b>
<i>Title :</i> <b>Receiver Drawing Tree</b>			

	<i>Name &amp; Function</i>	<i>Signature</i>	<i>Date</i>	<i>DISTRIBUTION LIST</i>	<i>N</i>	<i>A</i>	<i>I</i>
<i>Prepared by:</i>	Thomas Bleckert Systems Engineer		07.04.2010	<i>Consortium Internal</i> G Eiden (Luxspace)			
<i>Approved by:</i>	Adrian Nash Head of Systems		07.04.2010	<i>External</i> Iain Shepherd ( <i>DG MARE</i> ) Giovanni Garofalo ( <i>ESA</i> )			
<i>Application authorized by:</i>				<i>N=Number of copy A=Application I=Information</i>			
<b>Customer / Higher Level Contractor</b>							
<i>Accepted by:</i>							
<i>Approved by:</i>							

<i>Data Management:</i>			File: 0501 PASTA MARE Technical Note TN 11-3_issue1.doc
	<i>Signature</i>	<i>Date</i>	

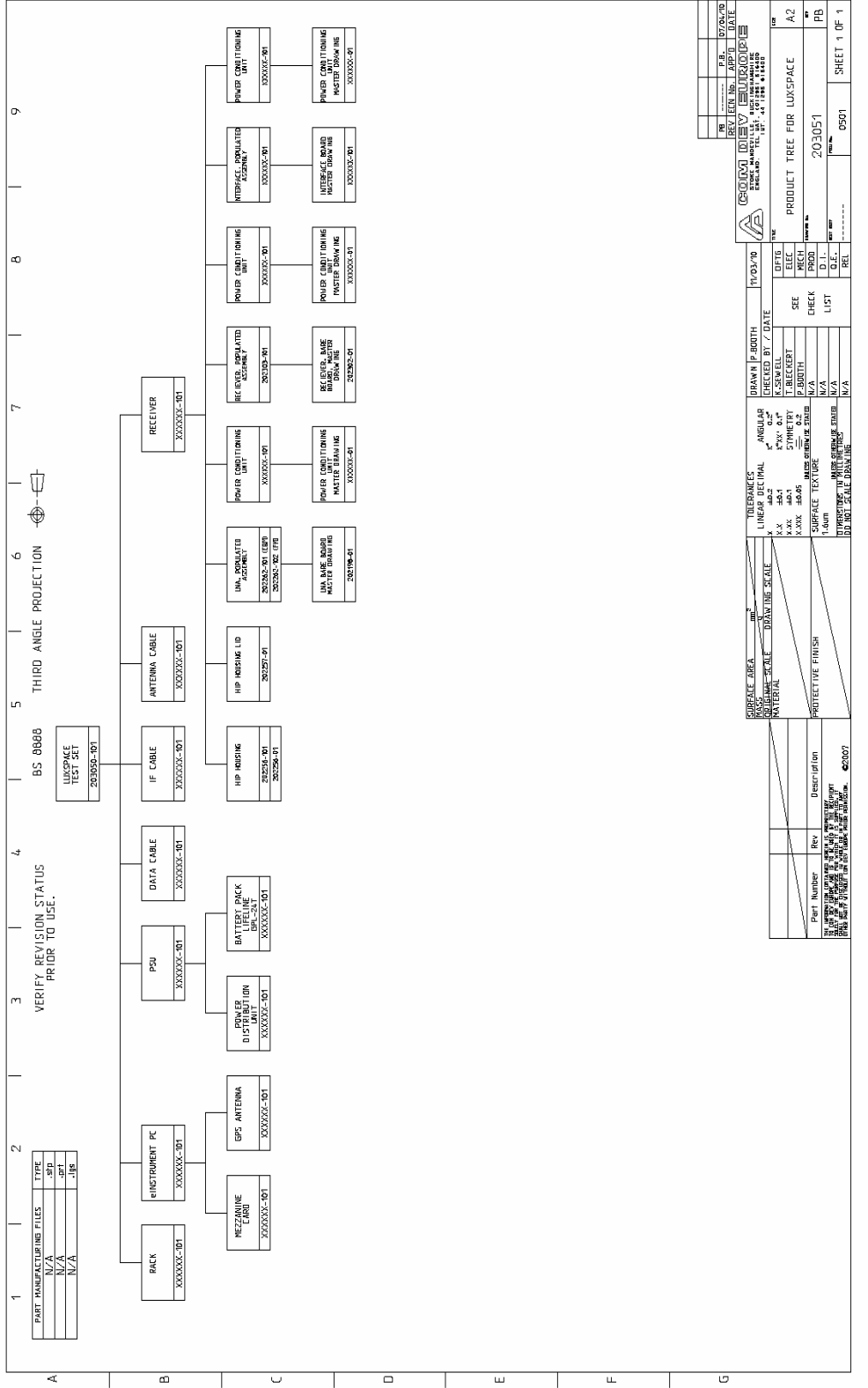
<b>Receiver Drawing Tree</b>	<i>Doc. N°:</i> <b>TN-11-3</b> <i>Issue:</i> <b>1</b> <i>Date:</i> <b>07.04.2010</b> <i>Page:</i> <b>3</b> of <b>4</b>
------------------------------	--

<b>DOCUMENT CHANGE RECORD</b>			
<i>ISSUE</i>	<i>DATE</i>	<i>CHANGE AUTHORITY</i>	<i>REASON FOR CHANGE AND AFFECTED SECTIONS</i>
1			
2			

**Applicable and Reference Documents**

RD 1	Preparatory Action for Assessment of the Capacity of Spaceborne Automatic Identification System Receivers to Support EU Maritime Policy – Pasta Mare Technical Proposal Call for Tenders No MARE/2008/06
------	---

# Receiver Drawing Tree



TOLEANCES	UNLESS SPECIFIED	ANGLES	UNLESS SPECIFIED
LINEAR	±0.1	FORM	±0.1
ANGULAR	±0.1	FINISH	SEE LIST
THREADS	PER ISO 286	PROTECTIVE FINISH	SEE LIST
PLATES	PER ISO 2768	PROTECTIVE FINISH	SEE LIST
ROUNDED EDGES	R0.5	PROTECTIVE FINISH	SEE LIST
ROUNDED CORNERS	R0.5	PROTECTIVE FINISH	SEE LIST
ROUNDED CHAMFERED EDGES	R0.5	PROTECTIVE FINISH	SEE LIST
ROUNDED CHAMFERED CORNERS	R0.5	PROTECTIVE FINISH	SEE LIST
ROUNDED CHAMFERED EDGES AND CORNERS	R0.5	PROTECTIVE FINISH	SEE LIST
ROUNDED CHAMFERED EDGES AND CORNERS WITH TYPICAL DIMENSIONS	R0.5	PROTECTIVE FINISH	SEE LIST
ROUNDED CHAMFERED EDGES AND CORNERS WITH TYPICAL DIMENSIONS AND TYPICAL DIMENSIONS	R0.5	PROTECTIVE FINISH	SEE LIST
ROUNDED CHAMFERED EDGES AND CORNERS WITH TYPICAL DIMENSIONS AND TYPICAL DIMENSIONS AND TYPICAL DIMENSIONS	R0.5	PROTECTIVE FINISH	SEE LIST
ROUNDED CHAMFERED EDGES AND CORNERS WITH TYPICAL DIMENSIONS AND TYPICAL DIMENSIONS AND TYPICAL DIMENSIONS AND TYPICAL DIMENSIONS	R0.5	PROTECTIVE FINISH	SEE LIST

DRAWN BY	DATE	17/03/10
CHECKED BY	DATE	
DESIGNED BY	DATE	
RECEIVED BY	DATE	
PROBATION	DATE	
CHECK	DATE	
LIST	DATE	
D.I.	DATE	
D.F.	DATE	
REL	DATE	