



EMODnet

European Marine
Observation and
Data Network

EMODnet Workshop: Marine Data for Ports, Marinas and Boating

The workshop will start at 9:30am
Please keep your microphone on mute

22 October 2024



The European Marine Observation and Data Network (EMODnet) is financed by the European Union under Regulation (EU) 2021/1139 of the European Parliament and of the Council of 7 July 2021 establishing the European Maritime, Fisheries and Aquaculture Fund.

Housekeeping rules

Welcome! Please update your zoom participant name with your Name and the Organisation you represent

Recording and Photo Disclaimer: Please be aware that the meeting will be recorded for internal reporting purposes. We will also take some screenshots in Plenary sessions for social media and reporting. If you do not want to be seen, please turn your video off during Plenary.

Video: Keep your video on as much as possible during the break-out discussions to promote interaction and discussion

Microphone use: Mute to avoid unnecessary background noise for the plenary presentations

Questions: Use the Chat and Raise Hand Feature: If you have a question or would like to speak in plenary or in break-out rooms, please use the "Raise Hand" feature. The moderator will invite you to unmute yourself when it's your turn to speak. Please ensure your background noise is kept to a minimum.

Slido: Used for 3 polling questions

Padlet: We will be using the online board 'Padlet' for interactive information sharing during the discussion sessions

Break-out rooms: Participants have been assigned to one of two break-out rooms to promote diverse representation of stakeholder groups in the interactive discussions. Break-out sessions will be moderated by EMODnet thematic Coordinators/experts.

Event organisation and agenda overview



Event organisation: This event is organised by the EMODnet Secretariat, in collaboration with EMODnet thematics and data ingestion, EC DG MARE, CINEA and co-design with external stakeholders European Boating Industry (EBI), TransMarinas and the European Sea Ports Organisation (ESPO)

- **09:30* – 09:35** Welcome, agenda & main aims
- **09:35 – 09:45** Opening remarks and setting the scene (EC DG MARE, EC JRC for European Blue Economy Observatory and the EMODnet Secretariat)
- **09:45–10:00** Demonstrating the EMODnet *in situ* marine data ‘offer’ for the ports, marinas and boating sector (EMODnet Human Activities, Seabed Habitats and Physics Coordinators/experts)
- **10:00 – 10:15** Use Cases and perspectives of open source EMODnet and wider data and data products to support, optimise and innovate the ports, marinas and boating sector (external stakeholders)
- **10:15 – 10:20** Q&A and open floor plenary discussion: the use of open-source marine environmental and human activities data from EMODnet and other data services to support the ports, marinas and boating sector
- **10:20-10:25** Introducing key topics for the Breakout discussions
- **10:25 – 11:15** Breakout discussion session #1: Gathering feedback on existing and emerging marine data needs and requirements to support the ports, marinas and boating sector.

*all times in Central European Time (Brussels)

Agenda overview (continued)

11:15-11:20 Comfort Break

- **11:20-11:25** Feedback Session 1
- **11:25-11:30** JPI Oceans Scoping Action on European Marinas
- **11:30 – 11:40** Win-win marine data collection and sharing
- **11:40 – 12:20** Breakout discussion session #2: Discussing challenges and barriers for data sharing by the ports, marinas and boating sector and how EMODnet Data Ingestion can support this process.
- **12:20-12:25** Feedback Session 2
- **12:25 – 12:30** Closing words from the EMODnet Secretariat
- **12:30** Workshop closes



EMODnet

 European Marine
Observation and
Data Network

Opening remarks

Zoi Konstantinou, EC, DG MARE



The European Marine Observation and Data Network (EMODnet) is financed by the European Union under Regulation (EU) 2021/1139 of the European Parliament and of the Council of 7 July 2021 establishing the European Maritime, Fisheries and Aquaculture Fund.



EMODnet

 European Marine
Observation and
Data Network

Setting the scene: European Blue Economy Observatory

Antonio Borriello, EC Joint Research Centre



The European Marine Observation and Data Network (EMODnet) is financed by the European Union under Regulation (EU) 2021/1139 of the European Parliament and of the Council of 7 July 2021 establishing the European Maritime, Fisheries and Aquaculture Fund.

The EU Blue Economy Observatory and EU Blue Economy Report



October 2024

DG JRC

DG MARE A.4



The EU Blue Economy Observatory



EU Blue Economy Sectors

EU Blue Economy includes all sectoral and cross-sectoral economic activities based on or related to the oceans, seas and coasts: Marine-based activities and Marine-related activities.



Educational and Employment opportunities in the Blue Economy

Do you want to improve your skills in the Blue Economy? Looking for a job? Look at the educational and employment opportunities available!



EU Blue Economy Maps

Maps of the following sectors: Coastal Tourism, Marine Living Resources, Marine non-living Resources, Port Activities, Shipbuilding and Repair, Maritime Transport and Marine Renewable Energy.



Energy transition

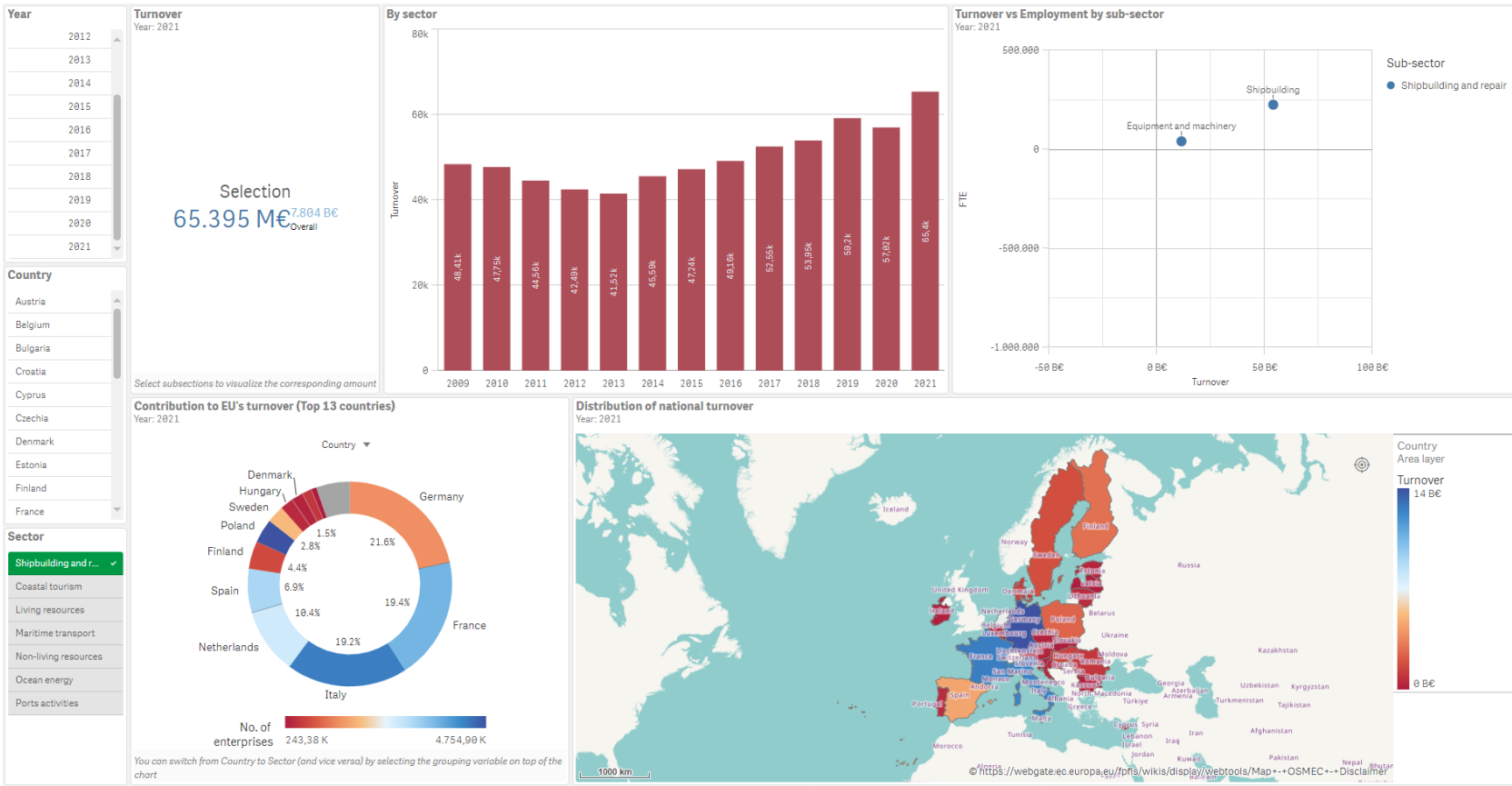
The sustainable growth of a blue economy depends on the switch from high-carbon to low-carbon energy.



Dashboard

Dive into data and charts that show the economic indicators used for the established sectors in the EU Blue Economy report

The EU Blue Economy Observatory



Dynamic visualizations covering economic (e.g. turnover, value added) and social indicators (employment, wages).

- Time series starting in 2009
- EU coverage

The EU Blue Economy Observatory



EU Blue Economy Sectors

EU Blue Economy includes all sectoral and cross-sectoral economic activities based on or related to the oceans, seas and coasts: Marine-based activities and Marine-related activities.



Dashboard

Dive into data and charts that show the economic indicators used for the established sectors in the EU Blue Economy report



EU Blue Economy Maps

Maps of the following sectors: Coastal Tourism, Marine Living Resources, Marine non-living Resources, Port Activities, Shipbuilding and Repair, Maritime Transport and Marine Renewable Energy.



Energy transition

The sustainable growth of a blue economy depends on the switch from high-carbon to low-carbon energy.



Educational and Employment opportunities in the Blue Economy

Do you want to improve your skills in the Blue Economy? Looking for a job? Look at the educational and employment opportunities available!

But also:

- **News on the BE**
- **Events**
- **Funding opportunities**
- **Publications**

Blue Economy Report

(seventh edition 2024):

Overview of the EU Blue Economy based on the latest available data

Comparable & consistent facts and figures on the EU Blue Economy

Accurate **monitoring of established sectors** (including those related to ports, marinas and boating) over time

Economic analyses of **emerging sectors** (e.g. desalination, blue biotechnology)

Support to policy making & stakeholders

Flagship report of the **EU BEO**



The background of the slide features a sunset over a body of water with mountains in the distance. Several teardrop-shaped icons are scattered across the scene, each containing a different image related to the blue economy: a wind turbine, a boat, a lighthouse, a ship, a factory, a glass of water, and a building. The main title is centered in white text.

Blue Economy Report (relevant) data sources

EUROSTAT:

Structural business statistics (SBS) describe the detailed structure, economic activity, and performance of businesses over time.

Economic activities are reported by **NACE Rev. 2** categorization.

Data on ports, marinas and boating span across different “established sectors”.

Blue Economy Report (relevant) data sources

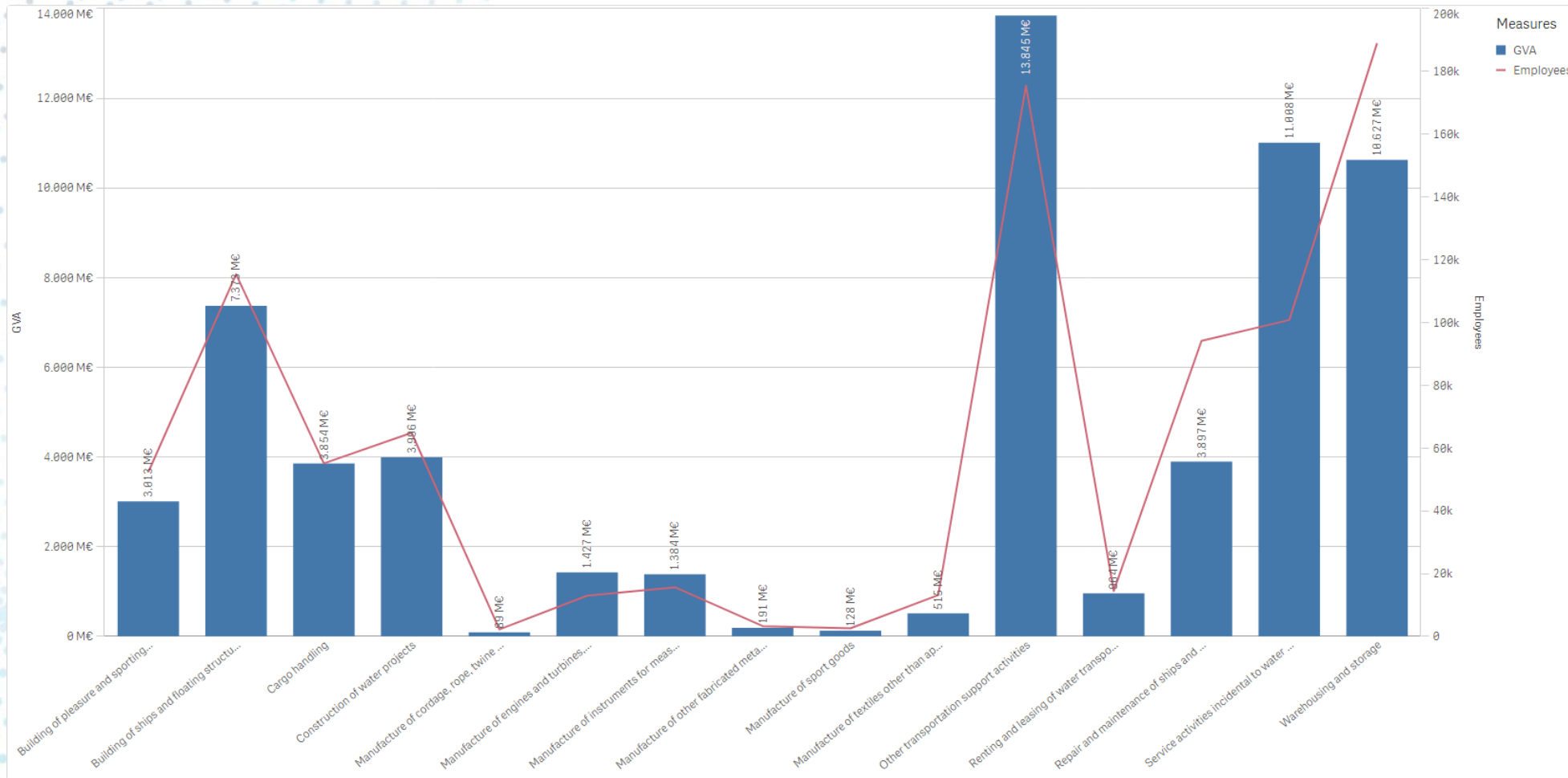
NACE Rev. 2 codes of interest:

Division	Class	SECTION	Sector of the BER
C	13.92	Manufacture of made-up textile articles, except apparel	Shipbuilding and repair
C	13.94	Manufacture of cordage, rope, twine and netting	Shipbuilding and repair
C	25.99	Manufacture of other fabricated metal products n.e.c.	Shipbuilding and repair
C	26.51	Manufacture of instruments and appliances for measuring, testing and navigation	Shipbuilding and repair
C	28.11	Manufacture of engines and turbines, except aircraft, vehicle and cycle engines	Shipbuilding and repair
C	30.11	Building of ships and floating structures	Shipbuilding and repair
C	30.12	Building of pleasure and sporting boats	Shipbuilding and repair
C	32.3	Manufacture of sports goods	Shipbuilding and repair
C	33.15	Repair and maintenance of ships and boats	Shipbuilding and repair
F	42.91	Construction of water projects	Port activities
G	47.6	Retail sale of cultural and recreation goods in specialised stores	Coastal tourism
G	47.7	Retail sale of other goods in specialised stores	Coastal tourism
H	52.1	Warehousing and storage	Port activities
H	52.22	Service activities incidental to water transportation	Port activities
H	52.24	Cargo handling	Port activities
H	52.29	Other transportation support activities	Maritime transport
I	56	Food and beverage service activities	Coastal tourism
N	77.34	Renting and leasing of water transport equipment	Maritime transport

All the manufacture sections are proportionally attributed to the blue economy component by analysing the **PRODUCTION COMMUNAUTAIRE (PRODCOM)** data.

It covers the production of manufactured goods by enterprises in EU countries

Latest figures available (2021)



LIMITATIONS and CHALLENGES:

- Time-lag
- Identification of marine component (e.g. Tourism)

Note that some activities may not be uniquely assigned to ports, marinas and boating (e.g. manufacture of textile articles overlaps with coastal tourism)



PROGRAMME OF THE EUROPEAN UNION



implemented by



Thank you



DG JRC

DG MARE.A4

blue-economy-observatory.ec.europa.eu



© European Union, 2024

Unless otherwise noted the reuse of this presentation is authorised under the [CC BY 4.0](https://creativecommons.org/licenses/by/4.0/) license. For any use or reproduction of elements that are not owned by the EU, permission may need to be sought directly from the respective right holders.



EMODnet

European Marine
Observation and
Data Network

Setting the scene: EMODnet Secretariat

Kate Larkin, Head of EMODnet Secretariat



The European Marine Observation and Data Network (EMODnet) is financed by the European Union under Regulation (EU) 2021/1139 of the European Parliament and of the Council of 7 July 2021 establishing the European Maritime, Fisheries and Aquaculture Fund.

slido



**What are your goals or expectations for this workshop?
(e.g. learn about EMODnet Sevices, becoming a data
provider,...) (Word cloud: short text responses)**

① Start presenting to display the poll results on this slide.

Why are marine environmental data important?



Images from open source Getty images and Shutterstock

- Reinforce our **understanding of the Ocean** and wider **climate change**;
- Provide **evidence to assess Ocean and marine ecosystem status**, to **underpin policy implementation to restore our Ocean and inland waters** and **reverse biodiversity loss and ecosystem degradation**;
- **Forecast future changes** to tackle major global issues such as climate change (e.g., climate adaptation and coastal resilience), pollution (e.g., marine litter), biodiversity loss, illegal fishing.

Why are marine environmental data and information on human activities at sea important?



Image of Port of Kristiansand, Norway (from ESPO website <https://www.espo.be/>)



Cartoon graphic of European Maritime Spatial Planning from <https://maritime-spatial-planning.ec.europa.eu/msp-eu/introduction-msp>

- Assess human interaction and impact on the marine environment;
- Improve evidence-based management of space at sea through Marine Spatial Planning (national and trans-boundary), ocean conservation, etc;
- To **support private sector/maritime industry** operations at sea e.g., reducing environmental impact through smart siting based on marine knowledge, reducing uncertainty, saving costs, supporting the ‘green’ transition and decarbonisation of maritime transport and to stimulate innovation and new applications in the Blue Economy.

One central map viewer

to visualise all EMODnet data



1 OCEAN 1 EMODnet

One single portal

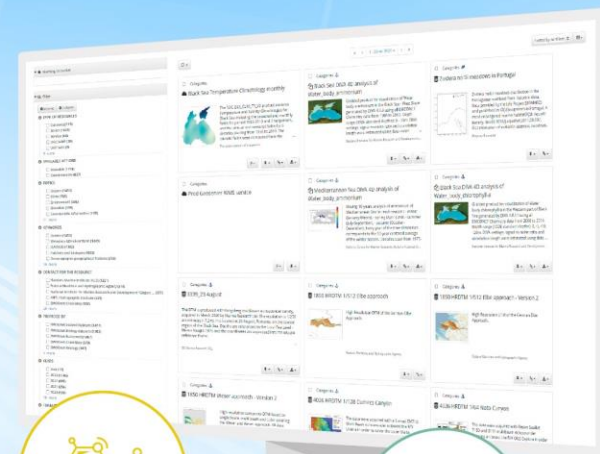
One central metadata catalogue

to enhance data search and discovery

120 partners

+100 use cases

Discover, visualise and download marine data and products across 7 thematics and hundreds of parameters



BATHYMETRY



HUMAN ACTIVITIES



PHYSICS



GEOLOGY



SEABED HABITATS



CHEMISTRY



BIOLOGY

EMODNET.EC.EUROPA.EU

YOUR GATEWAY TO *IN SITU* MARINE DATA IN EUROPE AND BEYOND



The European Marine Observation and Data Network (EMODnet) is financed by the European Union under Regulation (EU) 2021/1139 of the European Parliament and of the Council of 7 July 2021 establishing the European Maritime, Fisheries and Aquaculture Fund.



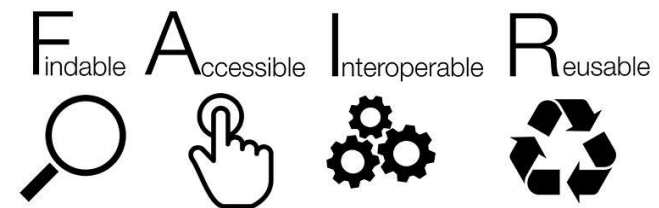
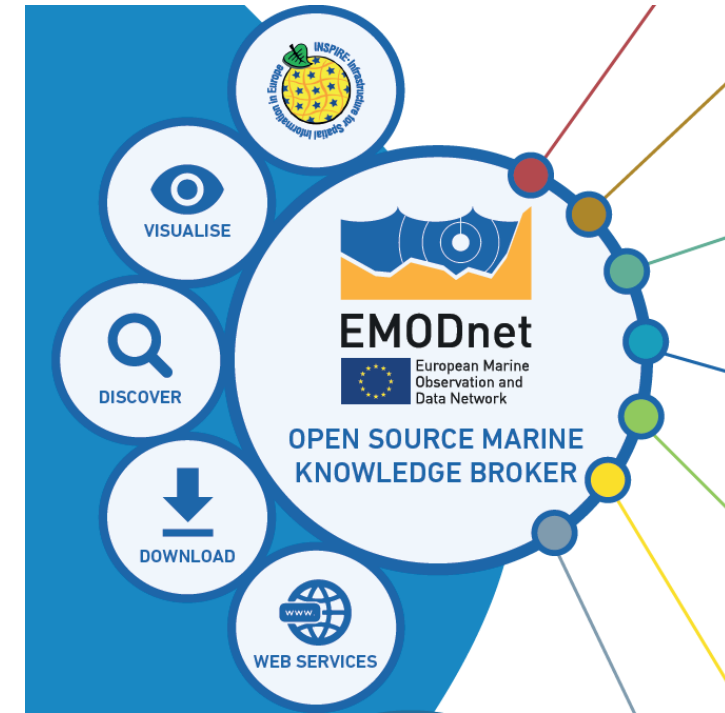
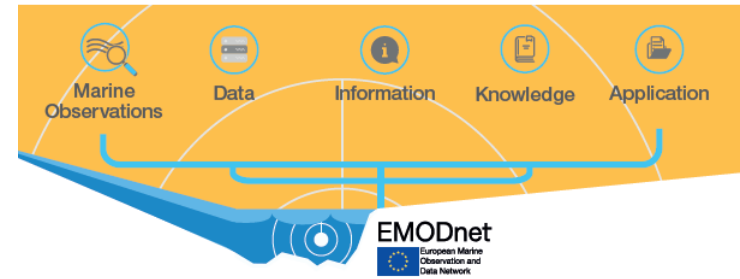
EMODnet
European Marine
Observation and
Data Network

EMODnet: Added value

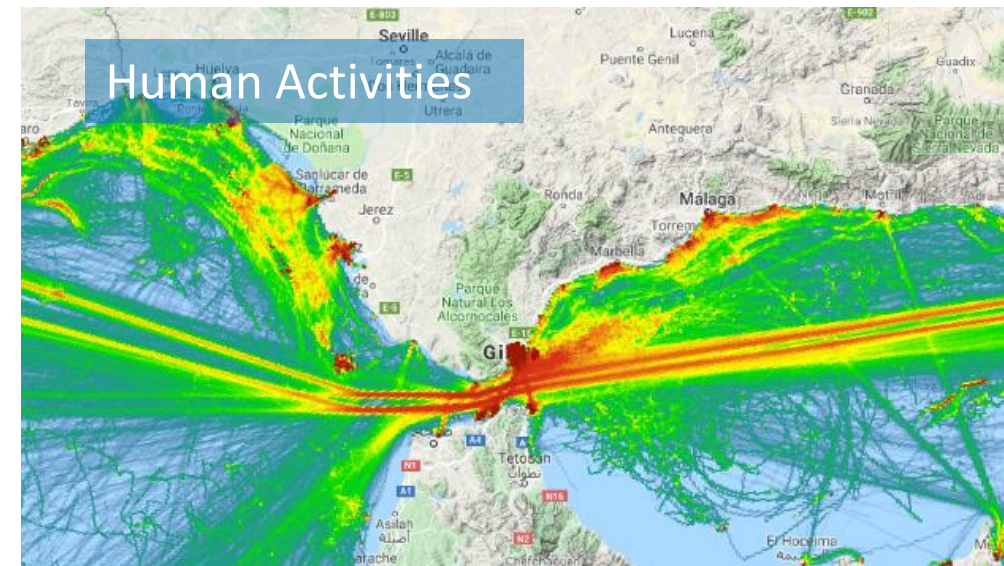
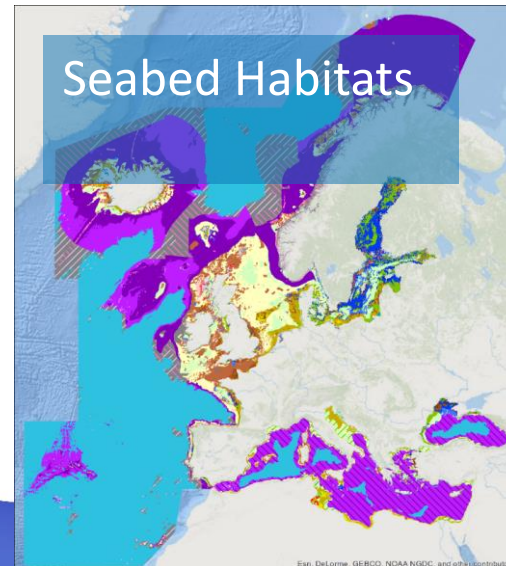
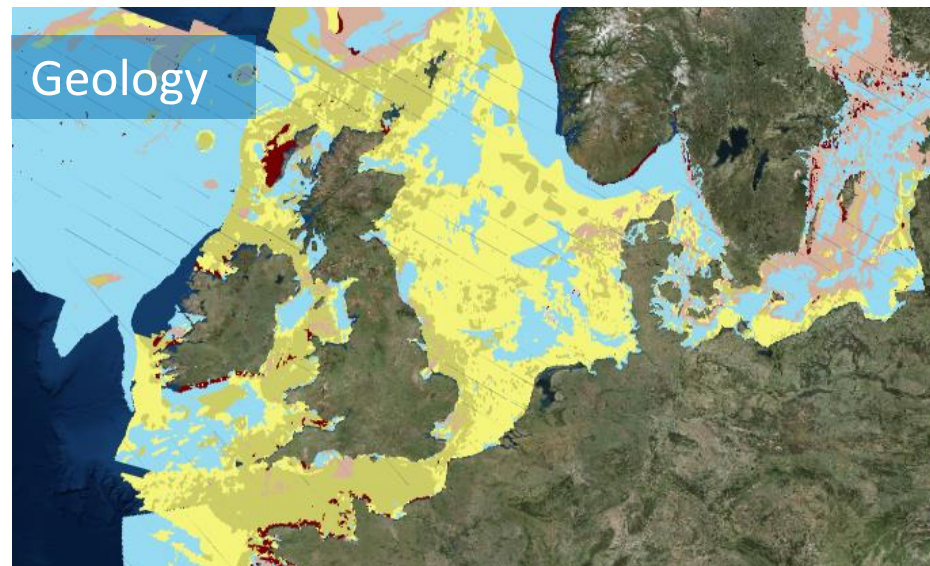
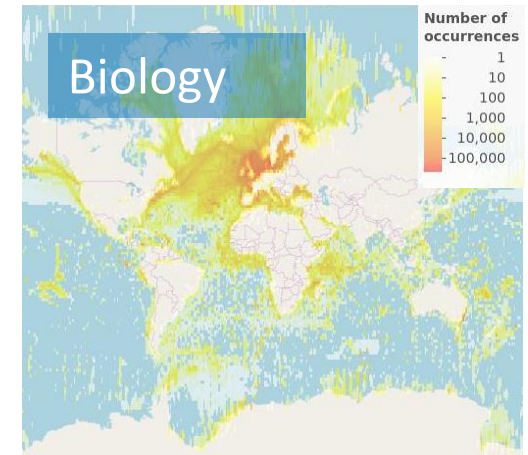
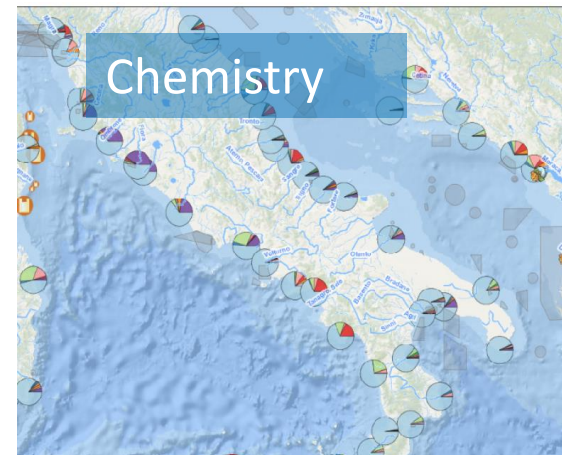
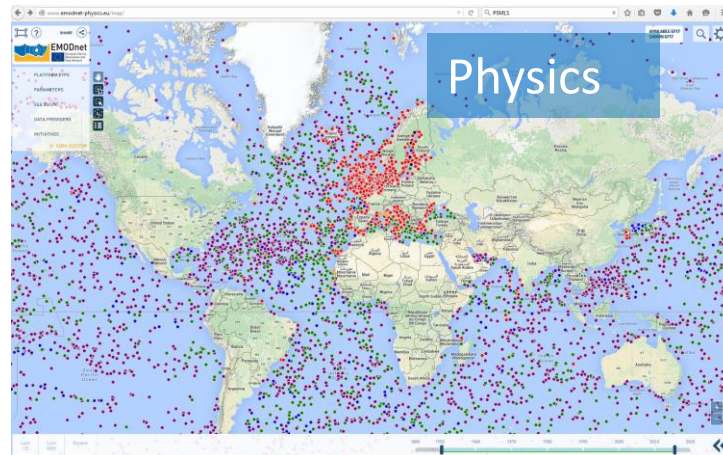
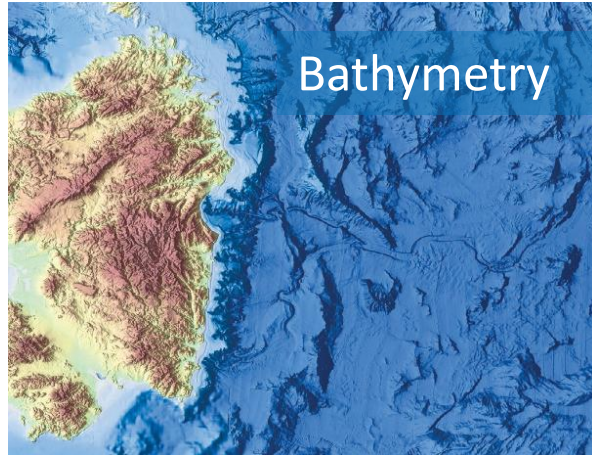
EMODnet offers **pan-European** (minimum, plus some wider coverage) **FAIR data layers and data products with standardized and harmonized data and metadata**, offered through **data services and web services**

- INSPIRE European geospatial data standards and FAIR data principles;
- Aggregated, harmonized multi-parameter data sets (acknowledging data collector in rich metadata);
- Searchable metadata, ISO standards;
- Data services (maps, query);
- Integrated data products (CC BY 4.0);
- Web services e.g. OGC, machine-machine readability e.g. WMS, WFS, WebS, OGC, API and OpenDAP

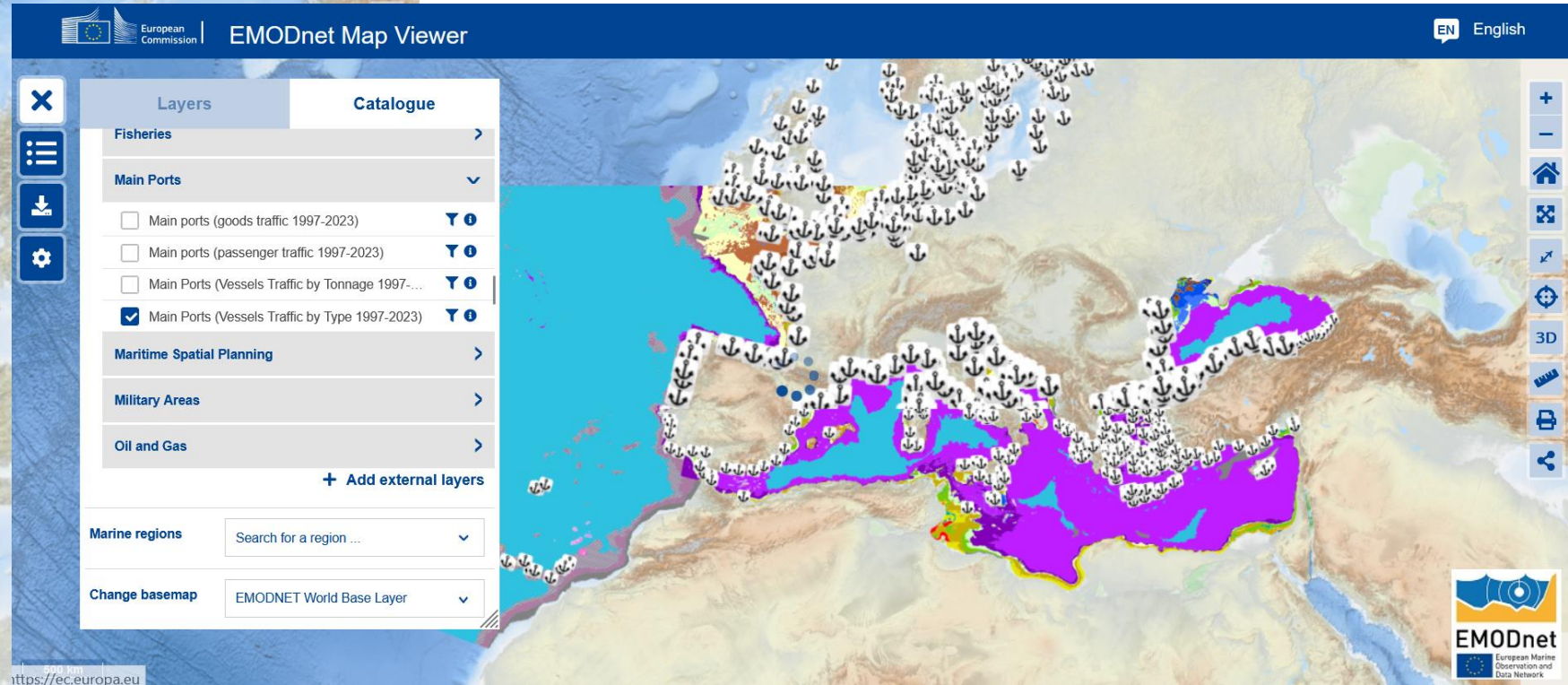
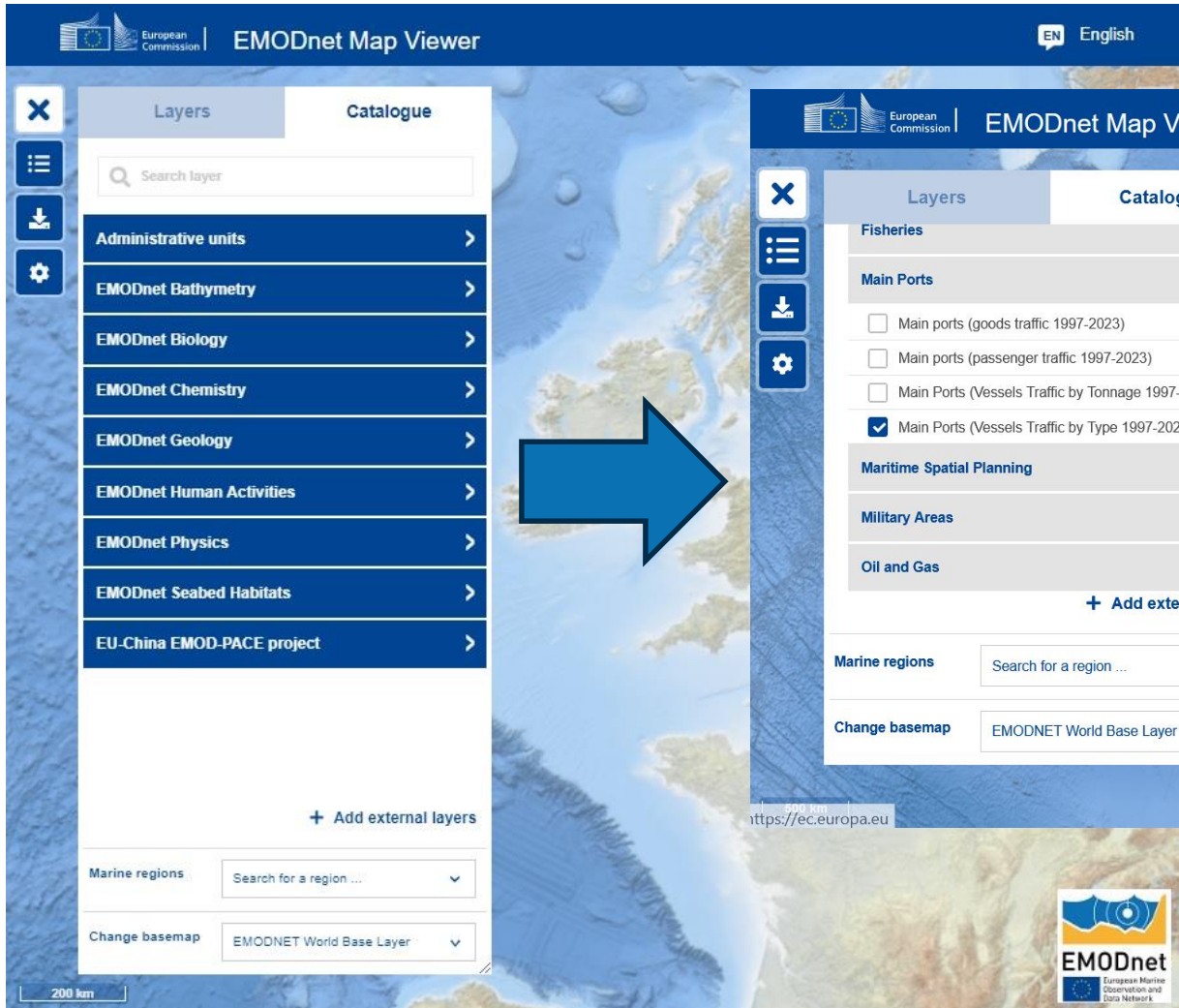
From raw data to real-life applications



EMODnet: Unlocking and democratising marine data, information and knowledge: Open and free for all



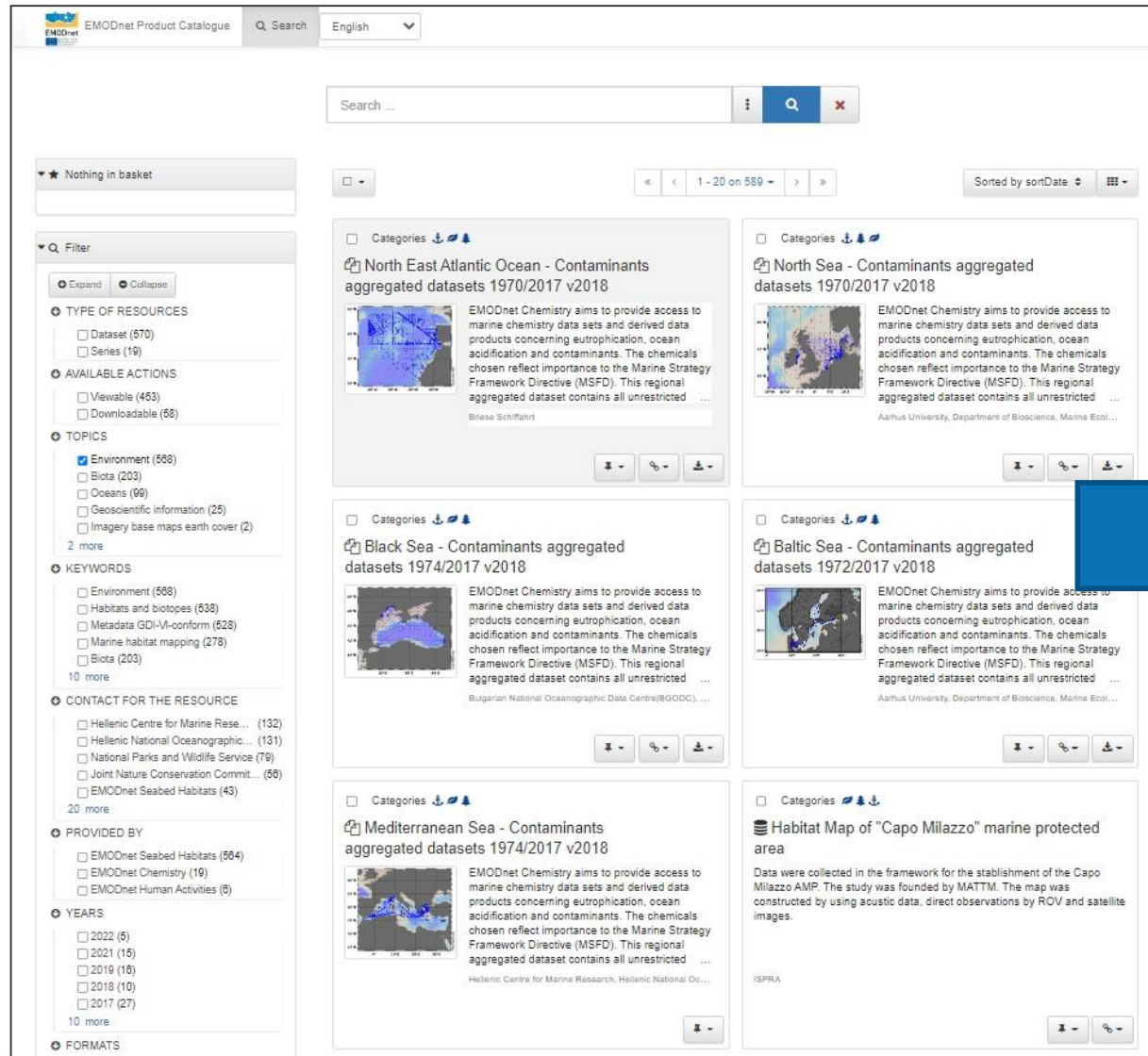
EMODnet: One map viewer for data discovery and download



Map Viewer (right) shows EMODnet Human Activities Main Ports (Vessels Traffic by Type) and EMODnet Seabed Habitat Maps

EMODnet: One central metadata catalogue for comprehensive searches

A single GeoNetwork catalogue that harvests OGC CSW published by thematic groups



EMODnet Product Catalogue

Search ...

English

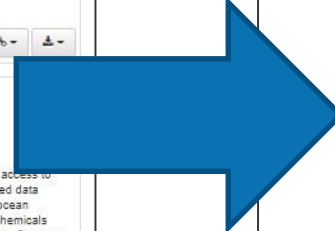
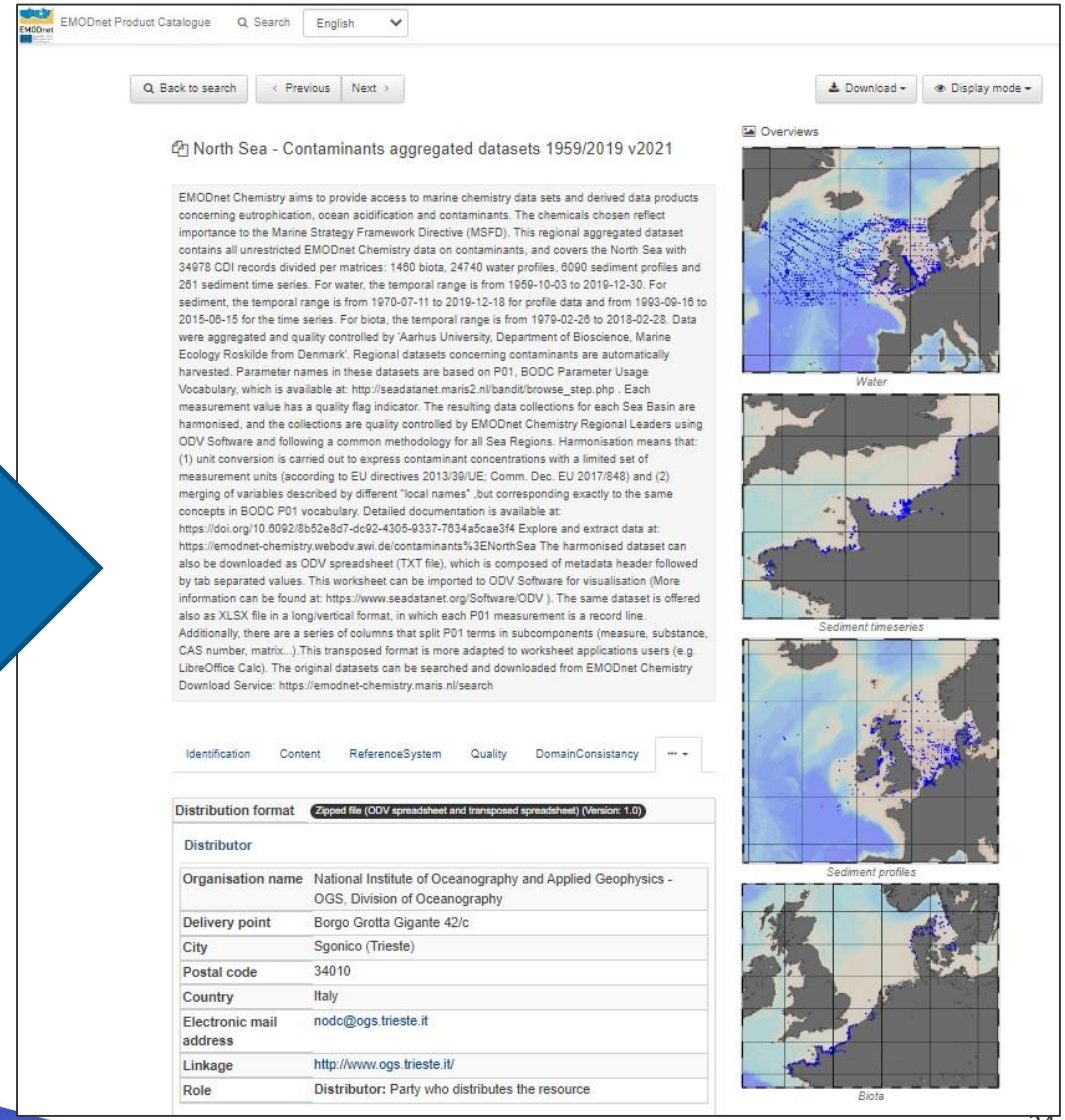
Nothing in basket

Filter

- TYPE OF RESOURCES
 - Dataset (570)
 - Series (19)
- AVAILABLE ACTIONS
 - Viewable (453)
 - Downloadable (58)
- TOPICS
 - Environment (568)
 - Biota (203)
 - Oceans (99)
 - Geoscientific information (25)
 - Imagery base maps earth cover (2)
- KEYWORDS
 - Environment (568)
 - Habitats and biotopes (538)
 - Metadata GDI-VI-conform (528)
 - Marine habitat mapping (278)
 - Biota (203)
- CONTACT FOR THE RESOURCE
 - Hellenic Centre for Marine Rese... (132)
 - Hellenic National Oceanographic... (131)
 - National Parks and Wildlife Service (79)
 - Joint Nature Conservation Commit... (58)
 - EMODnet Seabed Habitats (43)
- PROVIDED BY
 - EMODnet Seabed Habitats (584)
 - EMODnet Chemistry (19)
 - EMODnet Human Activities (6)
- YEARS
 - 2022 (6)
 - 2021 (15)
 - 2019 (16)
 - 2018 (10)
 - 2017 (27)
- FORMATS

Search results:

- North East Atlantic Ocean - Contaminants aggregated datasets 1970/2017 v2018
- North Sea - Contaminants aggregated datasets 1970/2017 v2018
- Black Sea - Contaminants aggregated datasets 1974/2017 v2018
- Baltic Sea - Contaminants aggregated datasets 1972/2017 v2018
- Mediterranean Sea - Contaminants aggregated datasets 1974/2017 v2018
- Habitat Map of "Capo Milazzo" marine protected area

EMODnet Product Catalogue

Search ...

English

Back to search

Previous Next

Download

Display mode

North Sea - Contaminants aggregated datasets 1959/2019 v2021

EMODnet Chemistry aims to provide access to marine chemistry data sets and derived data products concerning eutrophication, ocean acidification and contaminants. The chemicals chosen reflect importance to the Marine Strategy Framework Directive (MSFD). This regional aggregated dataset contains all unrestricted EMODnet Chemistry data on contaminants, and covers the North Sea with 34978 CDI records divided per matrices: 1460 biota, 24740 water profiles, 6090 sediment profiles and 261 sediment time series. For water, the temporal range is from 1959-10-03 to 2019-12-30. For sediment, the temporal range is from 1970-07-11 to 2019-12-18 for profile data and from 1993-09-16 to 2015-06-15 for the time series. For biota, the temporal range is from 1979-02-26 to 2018-02-28. Data were aggregated and quality controlled by 'Aarhus University, Department of Bioscience, Marine Ecology Roskilde from Denmark'. Regional datasets concerning contaminants are automatically harvested. Parameter names in these datasets are based on P01, BODC Parameter Usage Vocabulary, which is available at: http://seadatanet.maris2.nl/bandit/browse_step.php. Each measurement value has a quality flag indicator. The resulting data collections for each Sea Basin are harmonised, and the collections are quality controlled by EMODnet Chemistry Regional Leaders using ODV Software and following a common methodology for all Sea Regions. Harmonisation means that: (1) unit conversion is carried out to express contaminant concentrations with a limited set of measurement units (according to EU directives 2013/39/UE, Comm. Dec. EU 2017/848) and (2) merging of variables described by different "local names" but corresponding exactly to the same concepts in BODC P01 vocabulary. Detailed documentation is available at: <https://doi.org/10.8092/8b52e8d7-dc92-4305-9337-7634a5cae3f4> Explore and extract data at: <https://emodnet-chemistry.webodv.awi.de/contaminants%3ENorthSea> The harmonised dataset can also be downloaded as ODV spreadsheet (TXT file), which is composed of metadata header followed by tab separated values. This worksheet can be imported to ODV Software for visualisation (More information can be found at: <https://www.seadatanet.org/Software/ODV>). The same dataset is offered also as XLSX file in a long/vertical format, in which each P01 measurement is a record line. Additionally, there are a series of columns that split P01 terms in subcomponents (measure, substance, CAS number, matrix...). This transposed format is more adapted to worksheet applications users (e.g. LibreOffice Calc). The original datasets can be searched and downloaded from EMODnet Chemistry Download Service: <https://emodnet-chemistry.maris.nl/search>

Overview

Water

Sediment timeseries

Sediment profiles

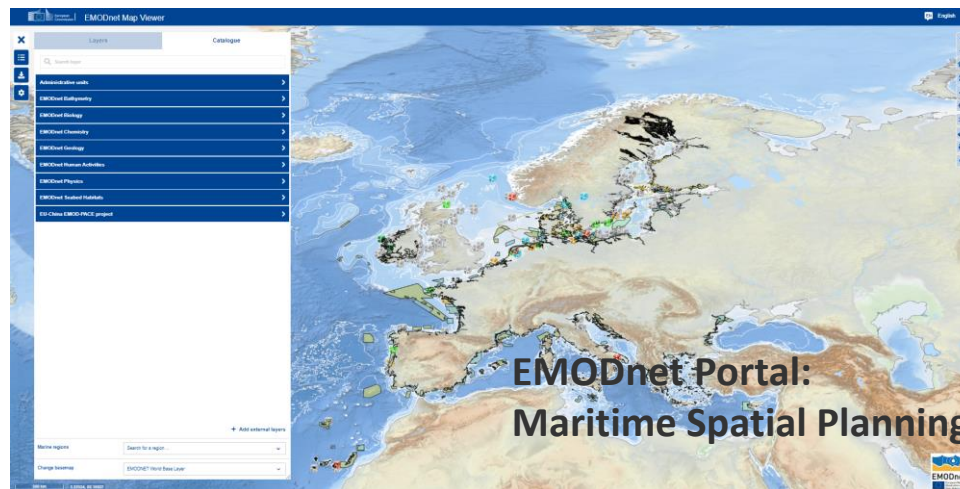
Biota

Identification	Content	ReferenceSystem	Quality	DomainConsistency
Distribution format Zip file (ODV spreadsheet and transposed spreadsheet) (Version: 1.0)				
Distributor				
Organisation name	National Institute of Oceanography and Applied Geophysics - OGS, Division of Oceanography			
Delivery point	Borgo Grotta Gigante 42/c			
City	Sgonico (Trieste)			
Postal code	34010			
Country	Italy			
Electronic mail address	nodc@ogs.trieste.it			
Linkage	http://www.ogs.trieste.it/			
Role	Distributor: Party who distributes the resource			

EMODnet: The Impact of trusted, FAIR marine data at European-scale for EU Policy, the Blue Economy and more



EMODnet hosts Member State **Marine Spatial Plans (working with nations to provide the MSP in geospatial data layers)**. EMODnet's Human Activities offer can then be integrated with ocean environmental data, to inform National and transboundary /regional sea-basin MSP.



«We realise the importance of EMODnet data and data products e.g. Bathymetry, Physics in reducing uncertainty and improving offshore energy operators costs in mico siting of cables».

**Gerben de Boer,
Van Oord, EMODnet Associated Partner**

Full EMODnet use case database at:
<https://emodnet.ec.europa.eu/en/use-cases>

EMODnet: Key partner for the European Digital Twin Ocean (EU DTO)



EDITOInfra
European Digital Twin Ocean

EMODnet
European Marine Observation and Data Network

Copernicus Marine Service

Logos for the European Union, Mercator Ocean International, and VLIZ are also present in the bottom right of the graphic.

- EMODnet and Copernicus Marine Service are the two EC marine data services providing the marine data infrastructure for the European Digital Twin Ocean and the Digital Ocean Knowledge System.
- EMODnet is the *in situ* pillar for the EU DTO and the EMODnet community plays a crucial role in EDITO, offering EMODnet's infrastructure and offer via valuable expertise, knowledge, and data related to marine and oceanographic information;
- Current status: The prototype EU DTO was launched at the Digital Ocean Forum 2024 (13 June 2024, Brussels, Belgium)



MERCATOR OCEAN
INTERNATIONAL



With the support of:

seascope
BELGIUM



EMODnet

 European Marine
Observation and
Data Network

Demonstrating the EMODnet *in situ* marine data 'offer' for the ports, marinas and boating sector



EMODnet

European Marine
Observation and
Data Network

Human Activities



EMODnet Human Activities data offer

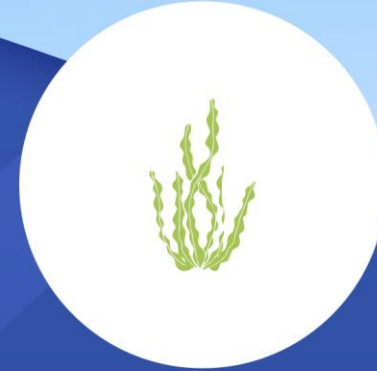
Alessandro Pititto, EMODnet Human Activities Coordinator; Cogea/Bip group



EMODnet

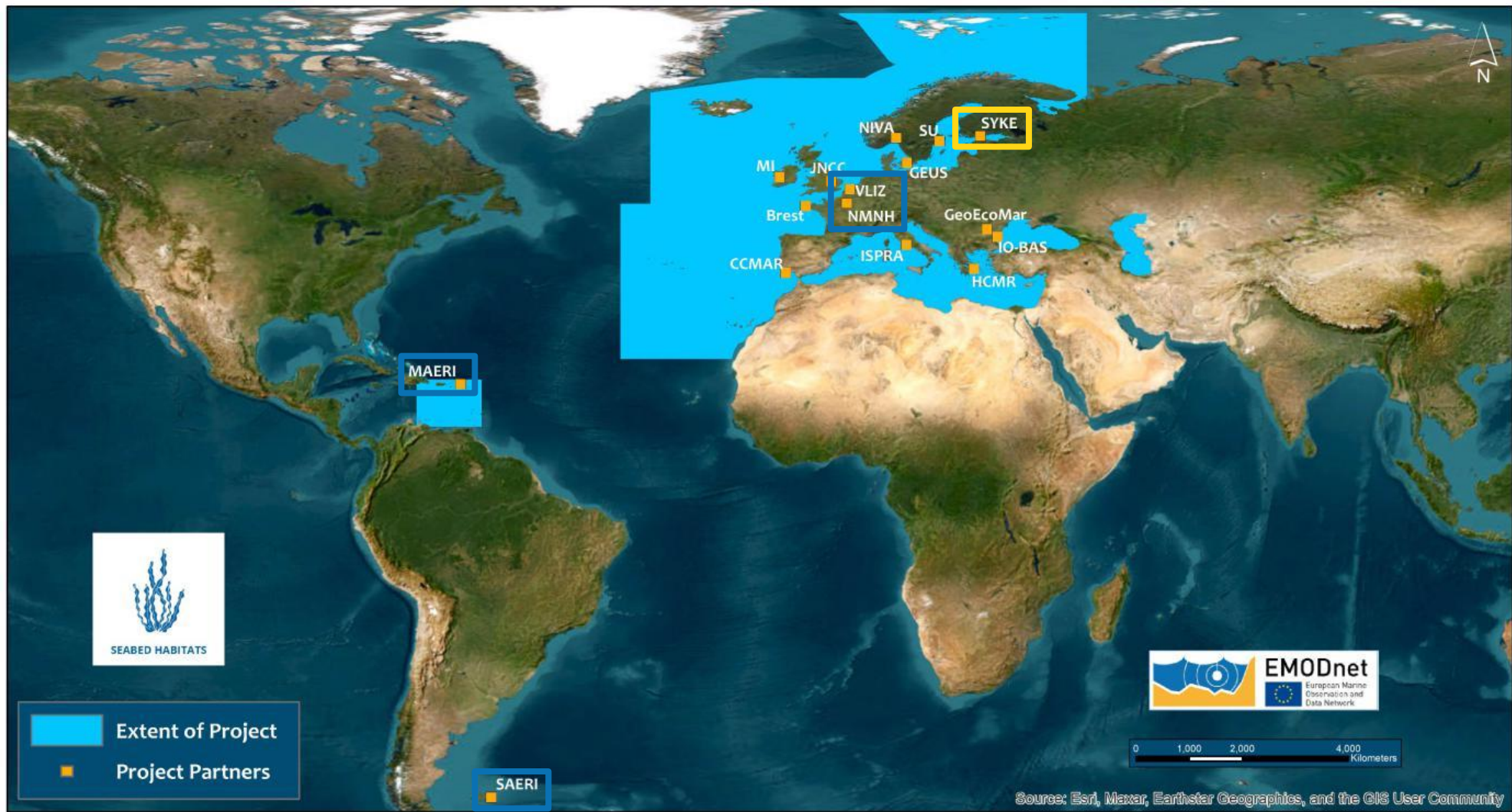
European Marine
Observation and
Data Network

Seabed Habitats



EMODnet Seabed Habitats data offer

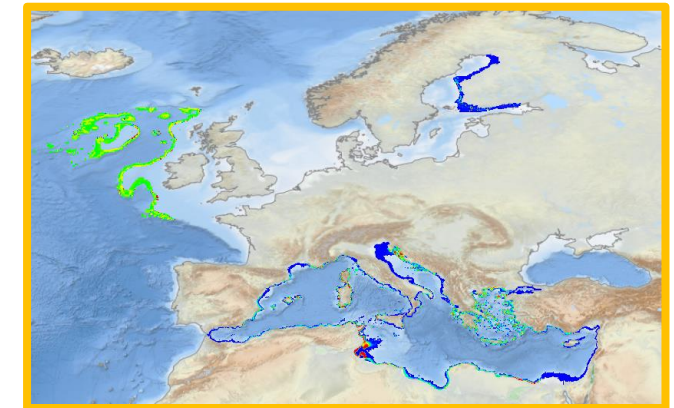
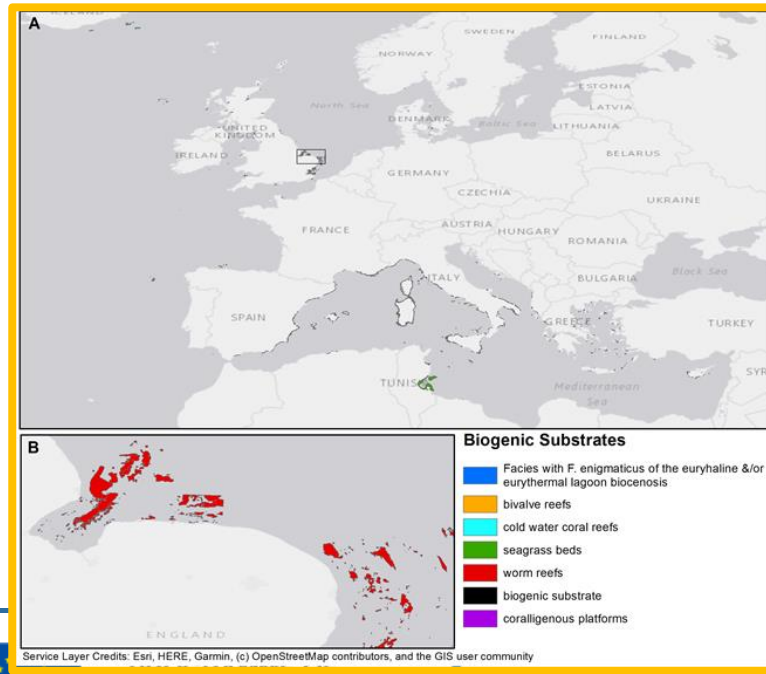
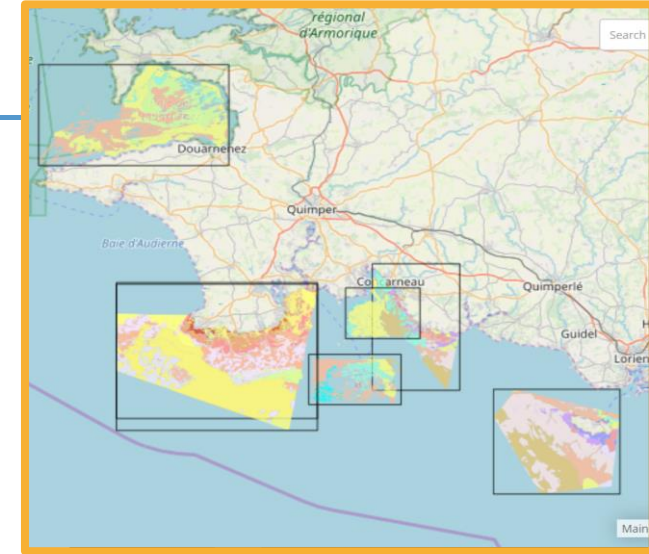
Helen Lillis, EMODnet Seabed Habitats partner; JNCC



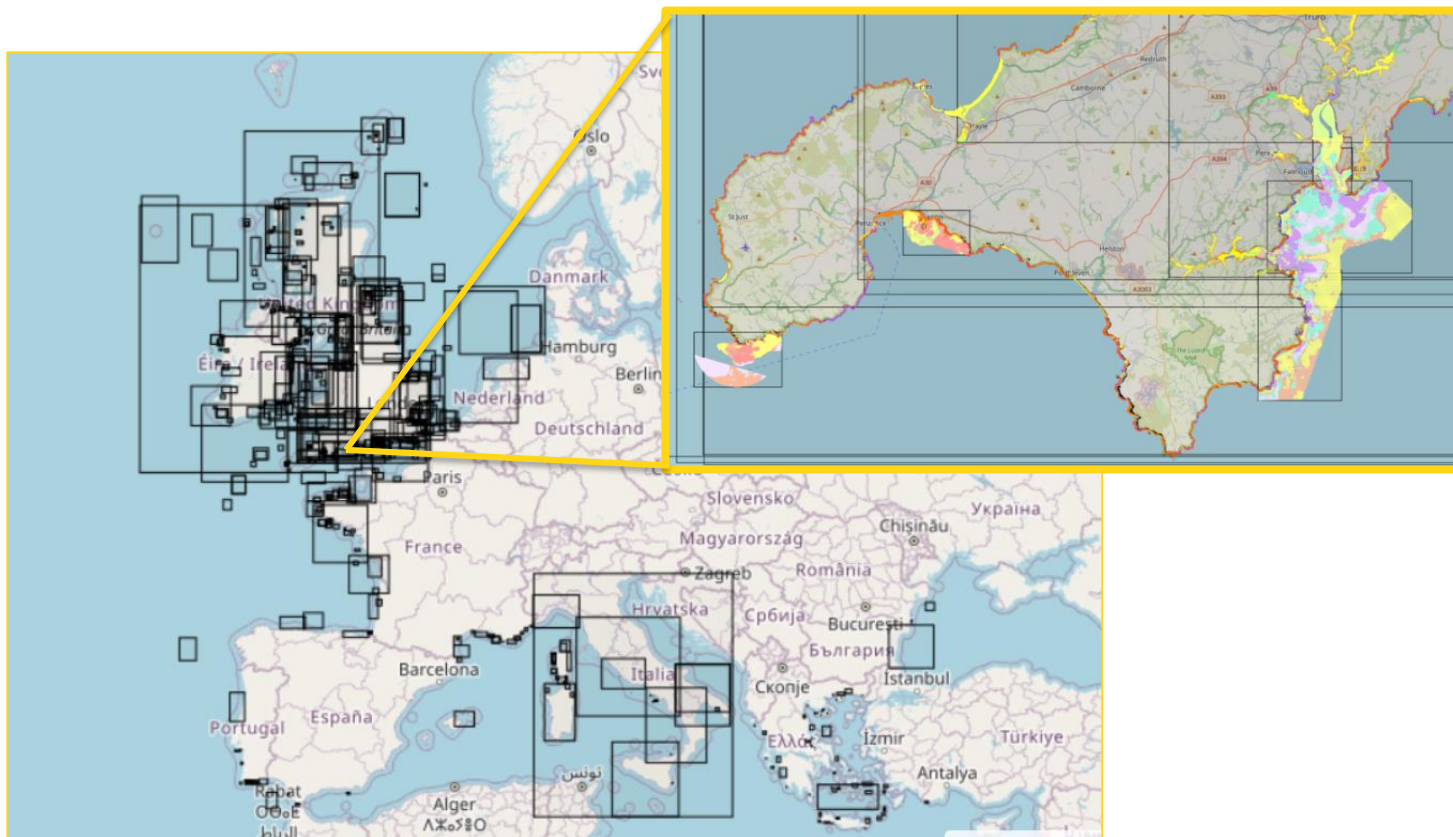
Source: Esri, Maxar, Earthstar Geographics, and the GIS User Community



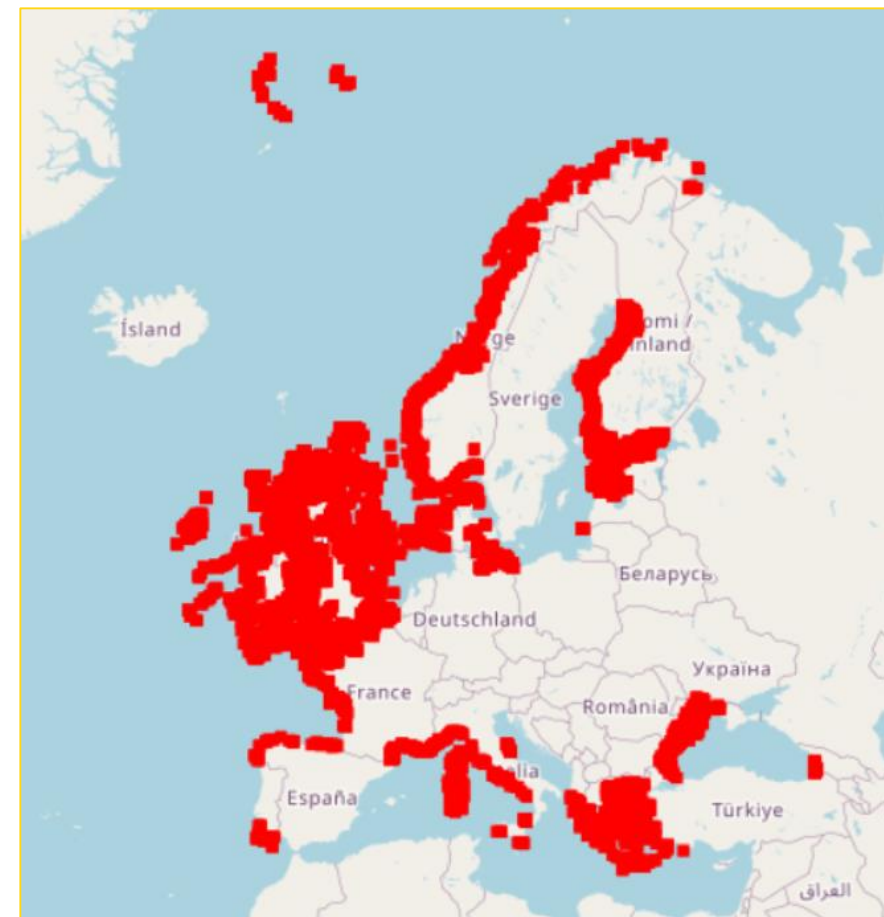
1. Habitat maps from survey
2. Point observations
3. Modelled habitat maps
4. Composite products



Europe's **only** comprehensive library of habitat maps from surveys and sample points.



Individual Habitat Maps from Surveys



Points Observations

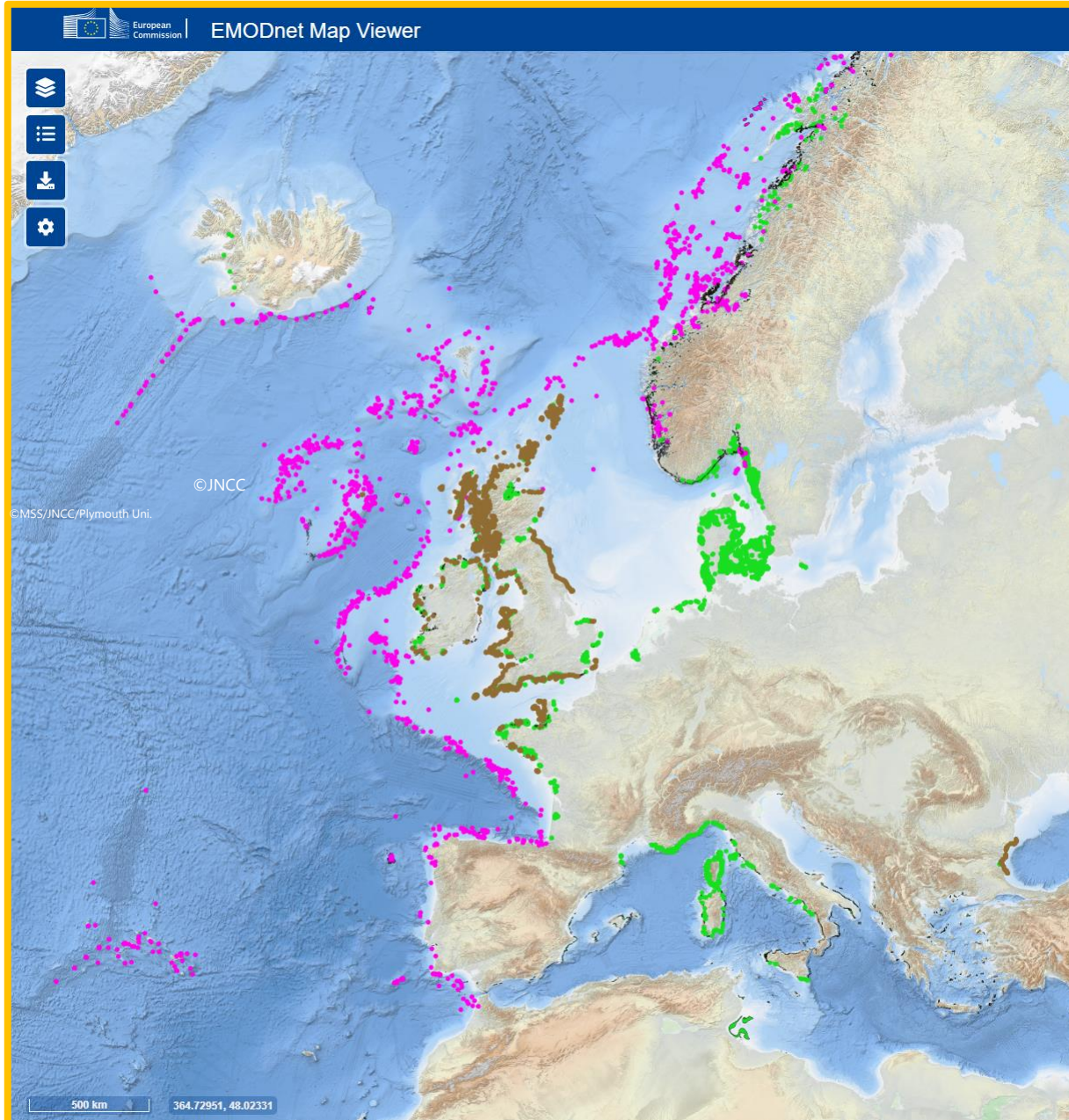


EMODnet



European Marine
Observation and
Data Network

EMODnet | Compiling local data into regional overviews



Macroalgal canopy cover



Live hard coral cover

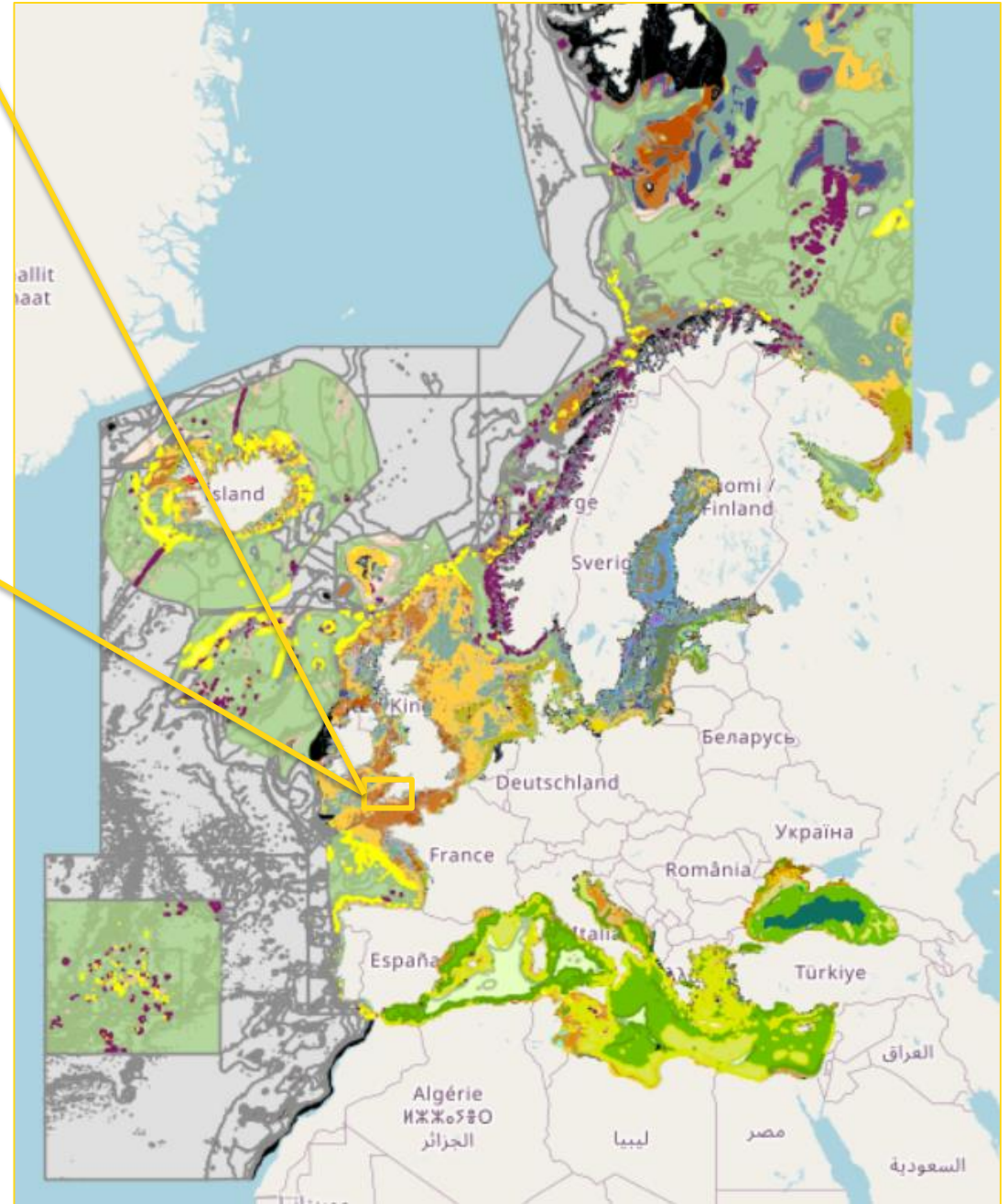
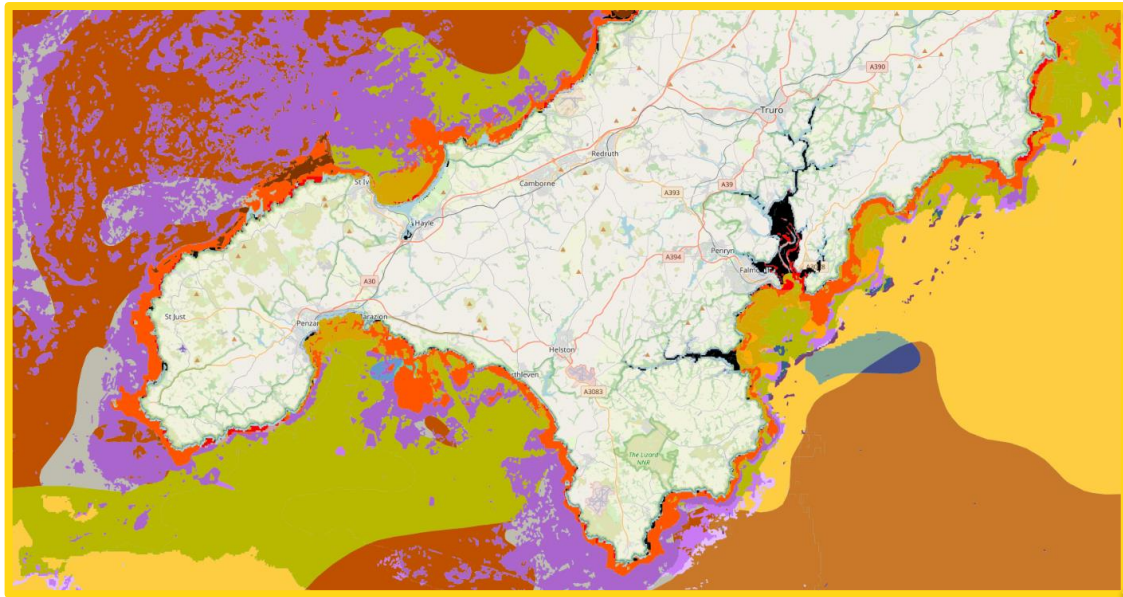


Seagrass cover



Mangrove cover

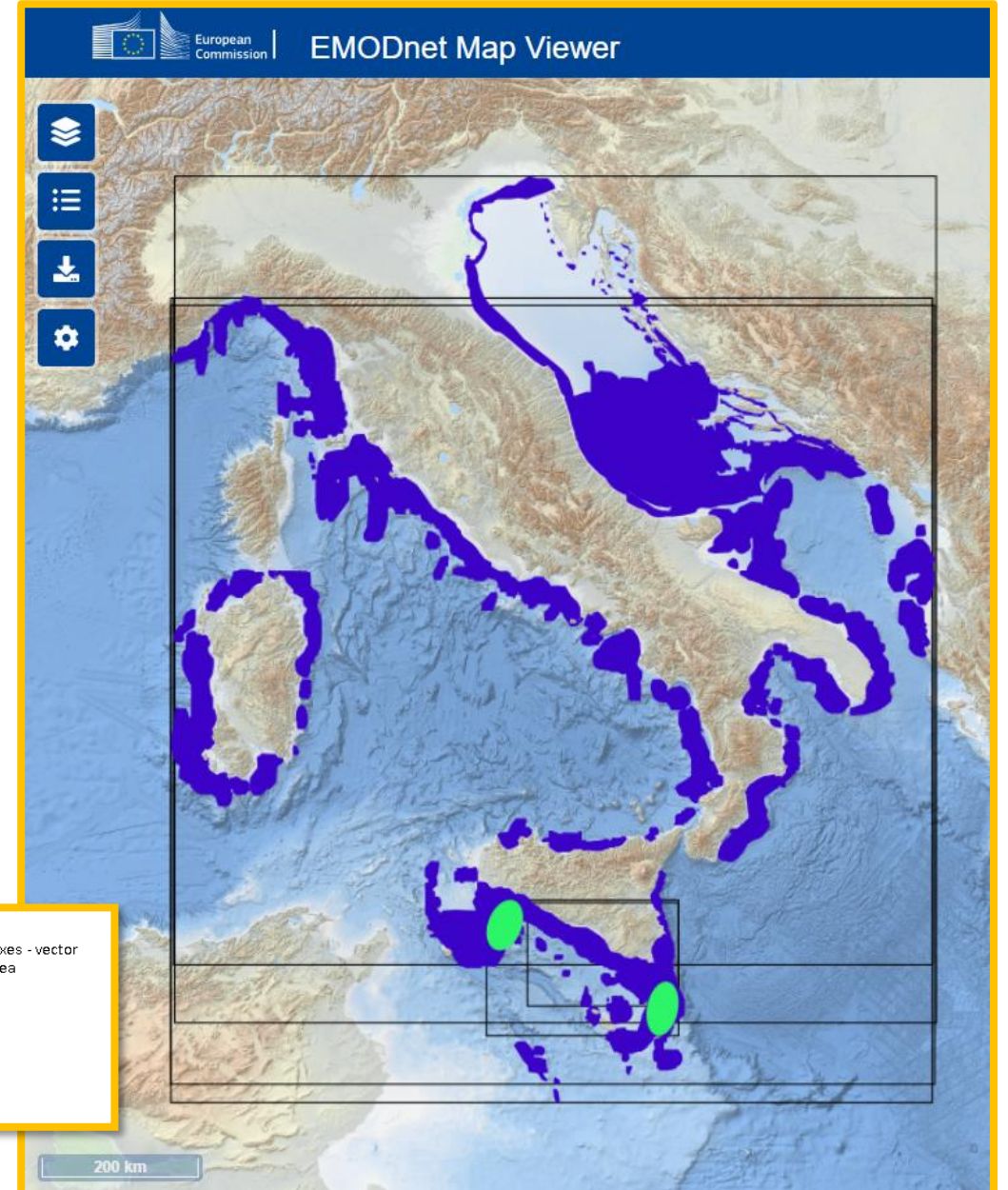
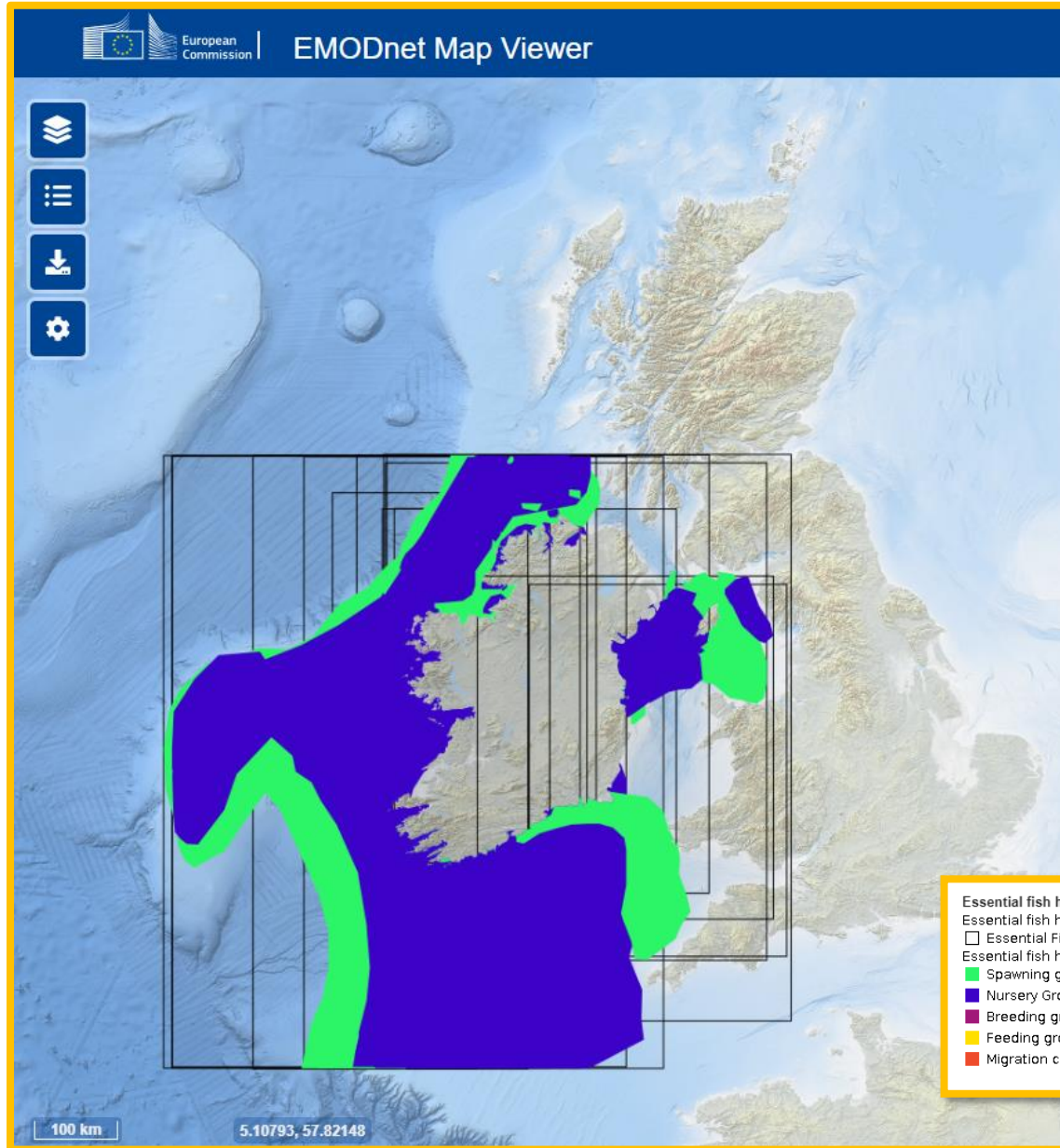
EMODnet | EUSeaMap: A broad-scale predictive seabed habitat map



EMODnet

European Marine
Observation and
Data Network

EMODnet | Essential Fish Habitats





EMODnet

European Marine
Observation and
Data Network

Physics

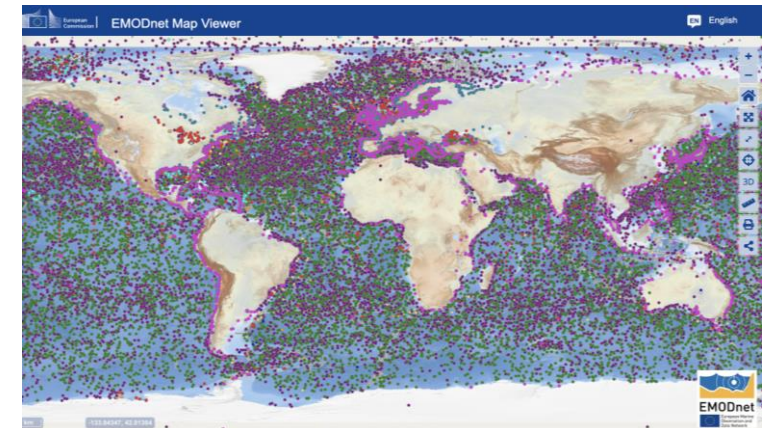
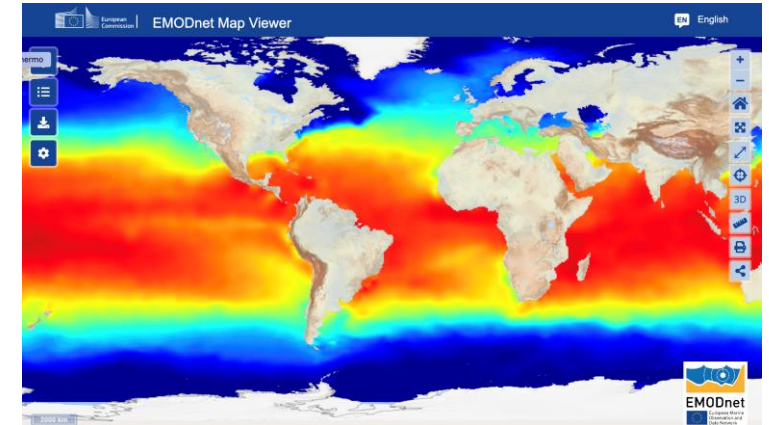


EMODnet Physics data offer

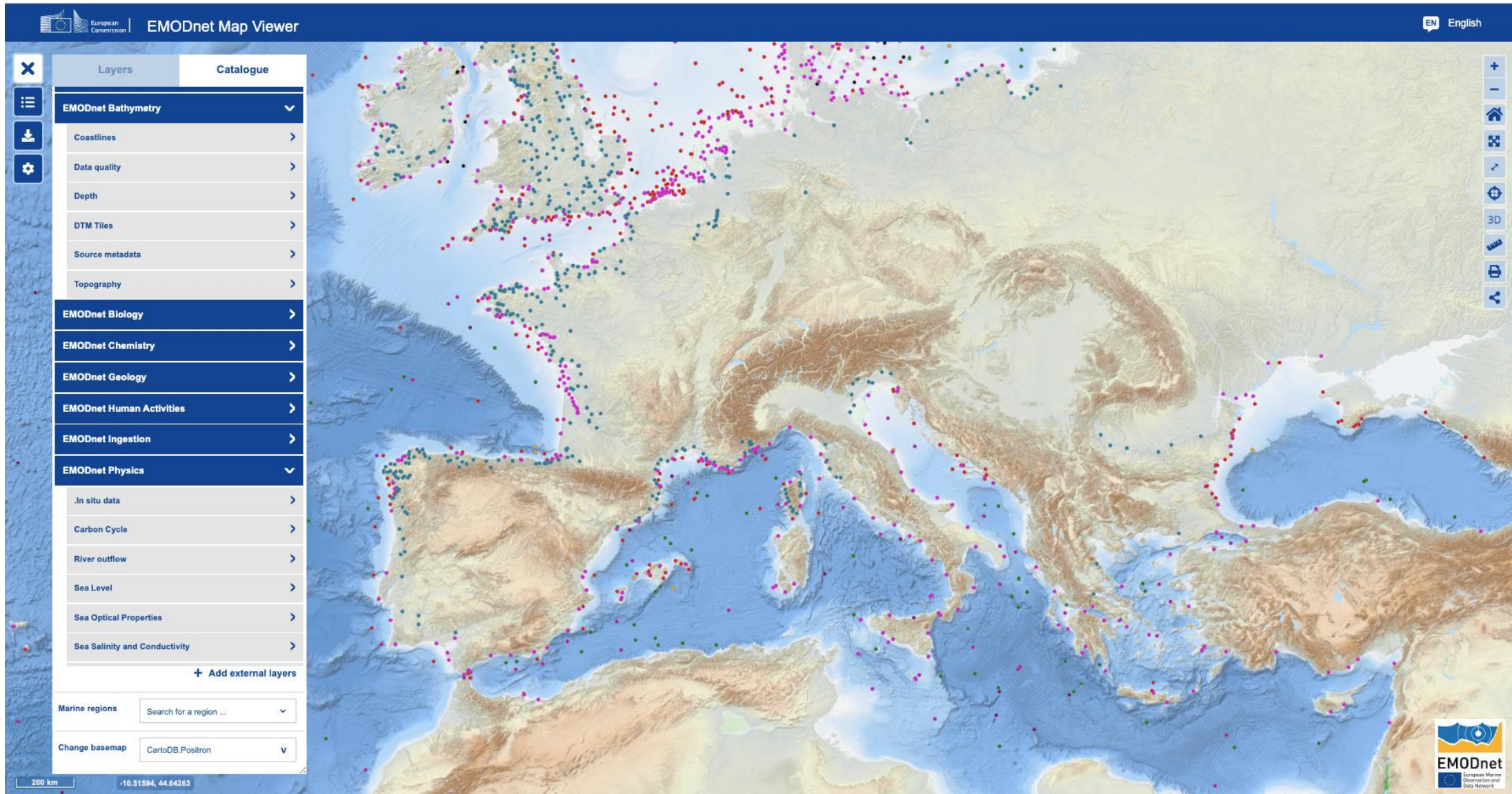
Antonio Novellino, EMODnet Physics Coordinator; ETT

EMODnet Physics

- **in situ** data and products – **FAIR** data and products
- integrates and makes available **near real time and delayed** mode data on ocean physics
- builds on **marine data infrastructures and programs**
- **common standards** and tools
- **Parameters**
- Temperature, Salinity, Sea Level, Currents, Waves and Winds, Optical properties of the water, Under water noise, Ice data, River runoff, Meteorological data at sea level
- **continuous data flow**
 - 1700/2500 Mooring, 1200 Rivers, 120/2500 Gliders/AUVs missions, ...
 - 1100/3000 Vessels data, 1750/25900 drifting buoys, 3100/20000 ARGO, ...
- **A single point of shop (central portal) for the in situ data**
- **Capacity building (tools, training, ... to advance in open data, FAIRness, Standards, Best Practices)**



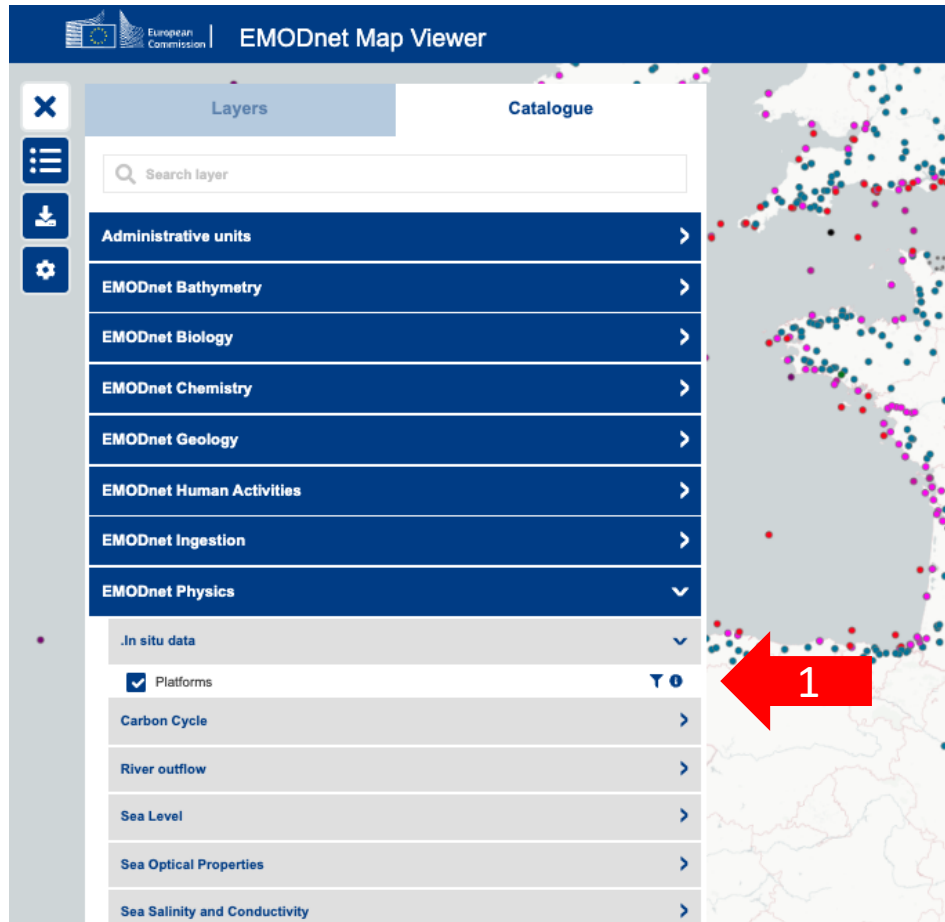
EMODnet: One map viewer for data discovery and download



The screenshot displays the EMODnet Map Viewer interface. The main map shows a topographic view of the Mediterranean region, with numerous colored dots representing data points. The interface includes a sidebar on the left with a 'Layers' and 'Catalogue' section. The 'Layers' section is expanded to show 'EMODnet Bathymetry' and 'EMODnet Physics'. The 'EMODnet Physics' section is further expanded to show sub-layers like '.In situ data', 'Carbon Cycle', 'River outflow', 'Sea Level', 'Sea Optical Properties', and 'Sea Salinity and Conductivity'. At the bottom of the sidebar, there are controls for 'Marine regions' and 'Change basemap'. The top of the interface features the European Commission logo, the text 'EMODnet Map Viewer', and a language selector set to 'English'. The bottom left corner shows a scale bar for 200 km and coordinates (-10.51594, 44.64263). The EMODnet logo is also present in the bottom right corner of the map area.

EMODnet Physics

3 clicks away from data



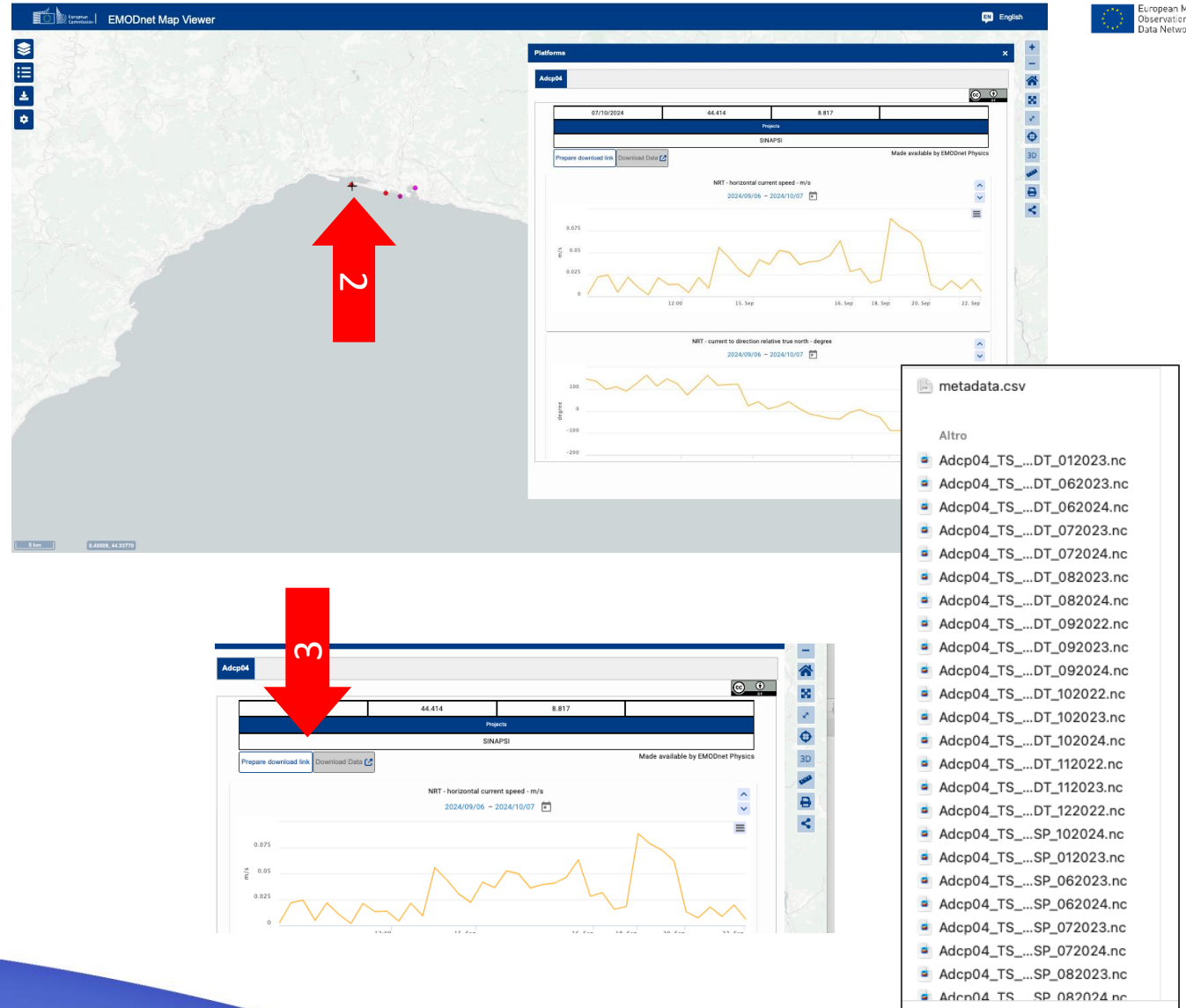
EMODnet Map Viewer

Layers

Catalogue

Search layer

- Administrative units
- EMODnet Bathymetry
- EMODnet Biology
- EMODnet Chemistry
- EMODnet Geology
- EMODnet Human Activities
- EMODnet Ingestion
- EMODnet Physics
- .In situ data
 - Platforms
- Carbon Cycle
- River outflow
- Sea Level
- Sea Optical Properties
- Sea Salinity and Conductivity



EMODnet Map Viewer

Platforms

Adcp04

9/19/2024 44.414 8.817

Project

SINAPSI

Made available by EMODnet Physics

Prepare download link Download Data

NRT - horizontal current speed - m/s

2024/09/06 - 2024/10/07

NRT - current to direction relative true north - degree

2024/09/06 - 2024/10/07

metadata.csv

Altro

- Adcp04_TS_...DT_012023.nc
- Adcp04_TS_...DT_062023.nc
- Adcp04_TS_...DT_062024.nc
- Adcp04_TS_...DT_072023.nc
- Adcp04_TS_...DT_072024.nc
- Adcp04_TS_...DT_082023.nc
- Adcp04_TS_...DT_082024.nc
- Adcp04_TS_...DT_092022.nc
- Adcp04_TS_...DT_092023.nc
- Adcp04_TS_...DT_092024.nc
- Adcp04_TS_...DT_102022.nc
- Adcp04_TS_...DT_102023.nc
- Adcp04_TS_...DT_102024.nc
- Adcp04_TS_...DT_112022.nc
- Adcp04_TS_...DT_112023.nc
- Adcp04_TS_...DT_122022.nc
- Adcp04_TS_...SP_102024.nc
- Adcp04_TS_...SP_012023.nc
- Adcp04_TS_...SP_062023.nc
- Adcp04_TS_...SP_062024.nc
- Adcp04_TS_...SP_072023.nc
- Adcp04_TS_...SP_072024.nc
- Adcp04_TS_...SP_082023.nc
- Adcp04_TS_...SP_082024.nc

EMODnet Physics

programmatic data access



ERDDAP > Search

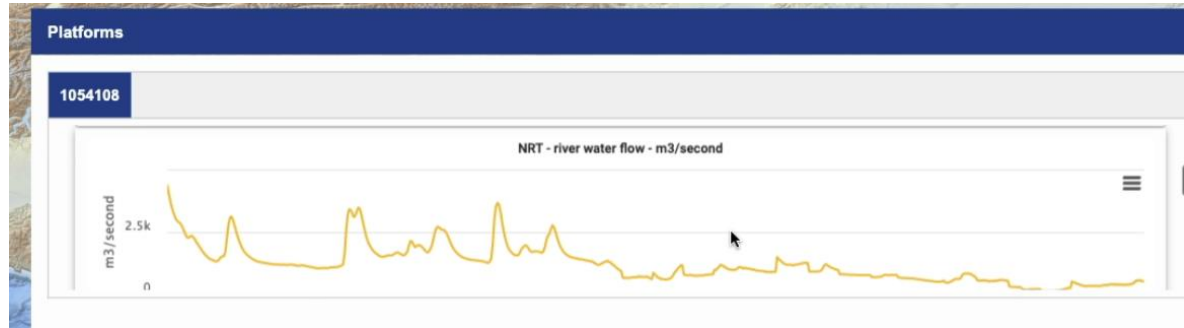
Do a Full Text Search for Datasets:

metadata Search

47 matching datasets, with the most relevant ones listed first.
(Or, refine this search with [Advanced Search](#))

Grid DAP	Sub-set	Table DAP	Make A Graph	W M S	Source Data Files	Title	Summary	FGDC, ISO, Metadata
	set	data	graph		files	EMODnet Physics - Collection of platforms metadata		F I M
		data	graph		files	EMODnet Physics - Collection of platforms metadata cld		F I M
	set	data	graph		files	EMODnet Physics - Collection of Currents (SDN:P33:CURRENTS) variables - MultiPointsObservation - METADATA		F I M
	set	data	graph		files	EMODnet Physics - Collection of River (SDN:P33:RIVER) variables - MultiPointsObservation - METADATA		F I M
	set	data	graph		files	EMODnet Physics - Collection of Sea Level (SDN:P33:SEALEVEL) variables - MultiPointsObservation - METADATA		F I M
	set	data	graph		files	EMODnet Physics - Collection of Waves (SDN:P33:WAVES) variables - MultiPointsObservation - METADATA		F I M
	set	data	graph		files	EMODnet Physics - Collection of Winds (SDN:P33:WIND) METADATA		F I M
	set	data	graph		files	EMODnet Physics - Collection of sea temperature (TEMP) MultiPointProfilesObservation - METADATA		F I M
	set	data	graph		files	EMODnet Physics - Collection of Carbon System (SDN:P: MultiPointsObservation - METADATA		F I M
	set	data	graph		files	EMODnet Physics - Collection of Optical Properties (SDN: MultiPointsObservation - METADATA		F I M

EP_PLATFORM_ID	time UTC	RVFL m3/s	RVFL_QC
1054108	2022-09-08T15:45:00Z	367.47	0
1054108	2022-09-08T16:00:00Z	351.66	0
1054108	2022-09-08T16:15:00Z	361.12	0
1054108	2022-09-08T16:30:00Z	357.5	0
1054108	2022-09-08T16:45:00Z	361.1	0
1054108	2022-09-08T17:00:00Z	361.1	0
1054108	2022-09-08T17:15:00Z	370.6	0
1054108	2022-09-08T17:30:00Z	370.6	0
1054108	2022-09-08T17:45:00Z	364.4	0
1054108	2022-09-08T18:00:00Z	367.4	0
1054108	2022-09-08T18:15:00Z	373.8	0
1054108	2022-09-08T23:00:00Z	377.0	0
1054108	2022-09-08T23:15:00Z	377.0	0
1054108	2022-09-08T23:30:00Z	377.0	0
1054108	2022-09-08T23:45:00Z	380	0
1054108	2022-09-09T00:00:00Z	380	0
1054108	2022-09-09T00:15:00Z	377.0	0
1054108	2022-09-09T00:30:00Z	383.8	0
1054108	2022-09-09T00:45:00Z	386.7	0
1054108	2022-09-09T01:00:00Z	386.7	0
1054108	2022-09-09T01:15:00Z	386.7	0
1054108	2022-09-09T01:30:00Z	386.7	0
1054108	2022-09-09T01:45:00Z	386.7	0
1054108	2022-09-09T02:00:00Z	386.7	0



docs.google.com/spreadsheets/d/12j9sFi60SL02yP9Sot22o4UFQE-p6CYg1shwKs-DoYU/edit#gid=1835698038

ERDDAP-to-GoogleSheet example

File Modifica Visualizza Inserisci Formato Dati Strumenti Estensioni Guida Appena modificato

100% € % .0 .00 123 10 B I S A

A4 `=importdata(A1;";")`

1 https://erddap.emodnet-physics.eu/erddap/tabledap/EP_ERD_INT_RVFL_AL_TS_NRT.csv?EP_PLATFORM_ID=%2Ctime%2CRVFL&EP_PLATFORM_ID=%221054108%22

2 `1 https://erddap.emodnet-...`

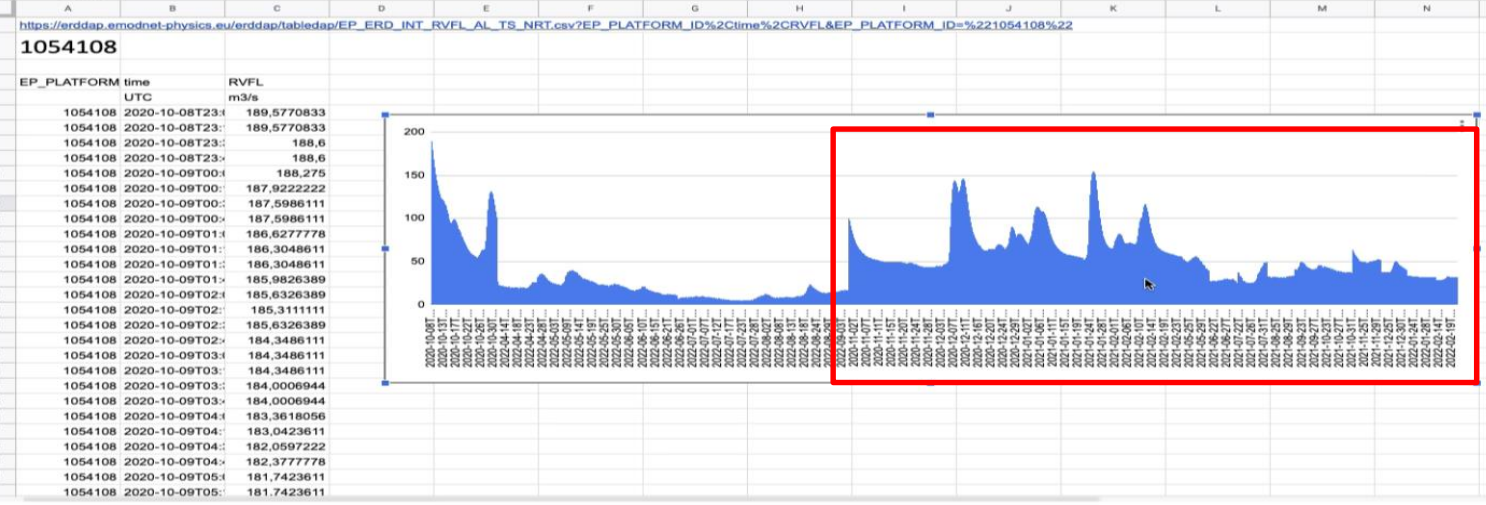
3

4 `=importdata(A1;";")`

5

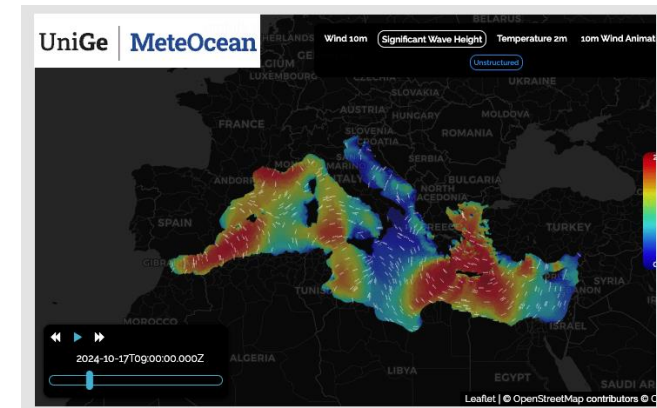
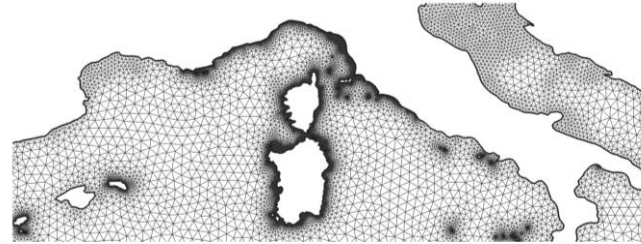
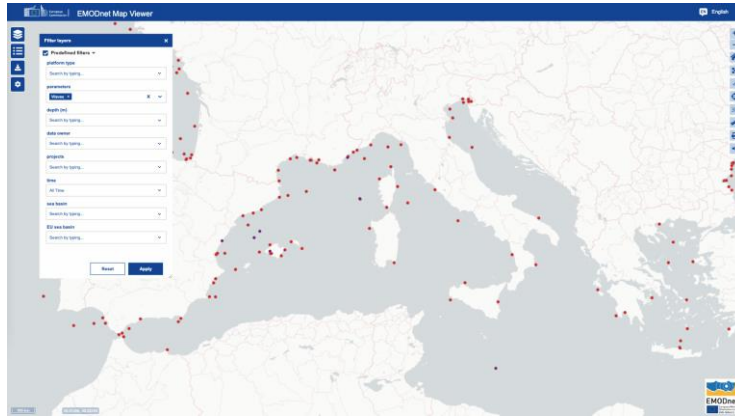
6

7

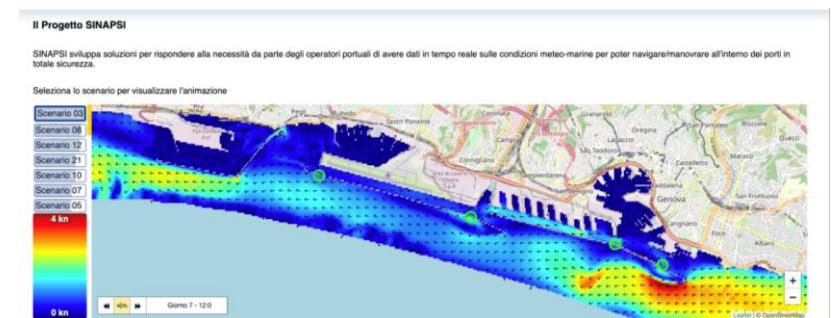
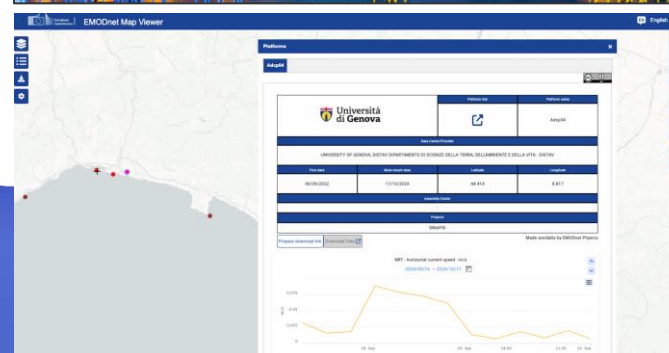
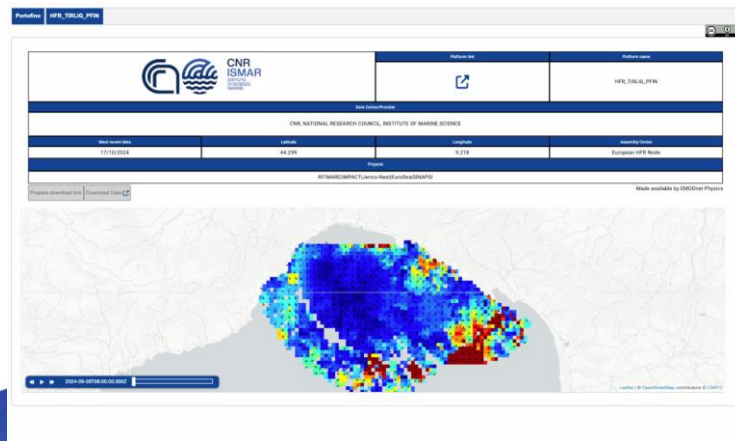
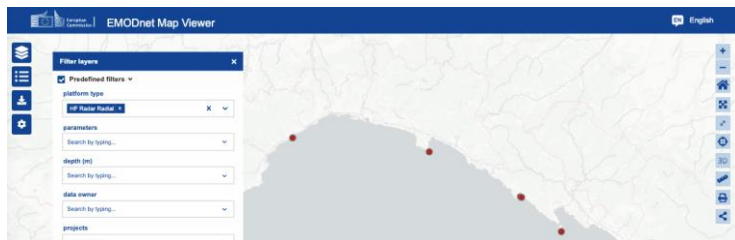


EMODnet Physics

Ingest, interoperate, use, and enhance services



<https://forecast.meteocean.science/>



<https://s4sinapsi.it/home/>





EMODnet



European Marine
Observation and
Data Network



emodnet.ec.europa.eu

Stay up-to-date with
the latest news





EMODnet

European Marine
Observation and
Data Network



Use Cases and perspectives of open source EMODnet and wider data and data products



EMODnet



European Marine
Observation and
Data Network

Savvy Navvy

David Cusworth, Savvy Navvy, EMODnet Associated Partner



The European Marine Observation and Data Network (EMODnet) is financed by the European Union under Regulation (EU) 2021/1139 of the European Parliament and of the Council of 7 July 2021 establishing the European Maritime, Fisheries and Aquaculture Fund.



savvy navvy

Navigating a More Sustainable Course

Who we are



Award winning navigation app

- 2M+ app downloads
- 100+ countries
- 200M+ nm of planned trips
- Official Blue Meadows (OCT) Navigation Partner
- EMODnet Associated Partner
- ProtectedSeas Official Partner



British Marine
Business of the Year
2023



**Great British
Entrepreneur Awards**
Scale-Up of the Year
2022



Seedrs
Entrepreneur
of the Year
2019



British Marine
Excellence in Exporting
Award 2024



Tech SouthWest
MarineTech Business
of the Year 2023



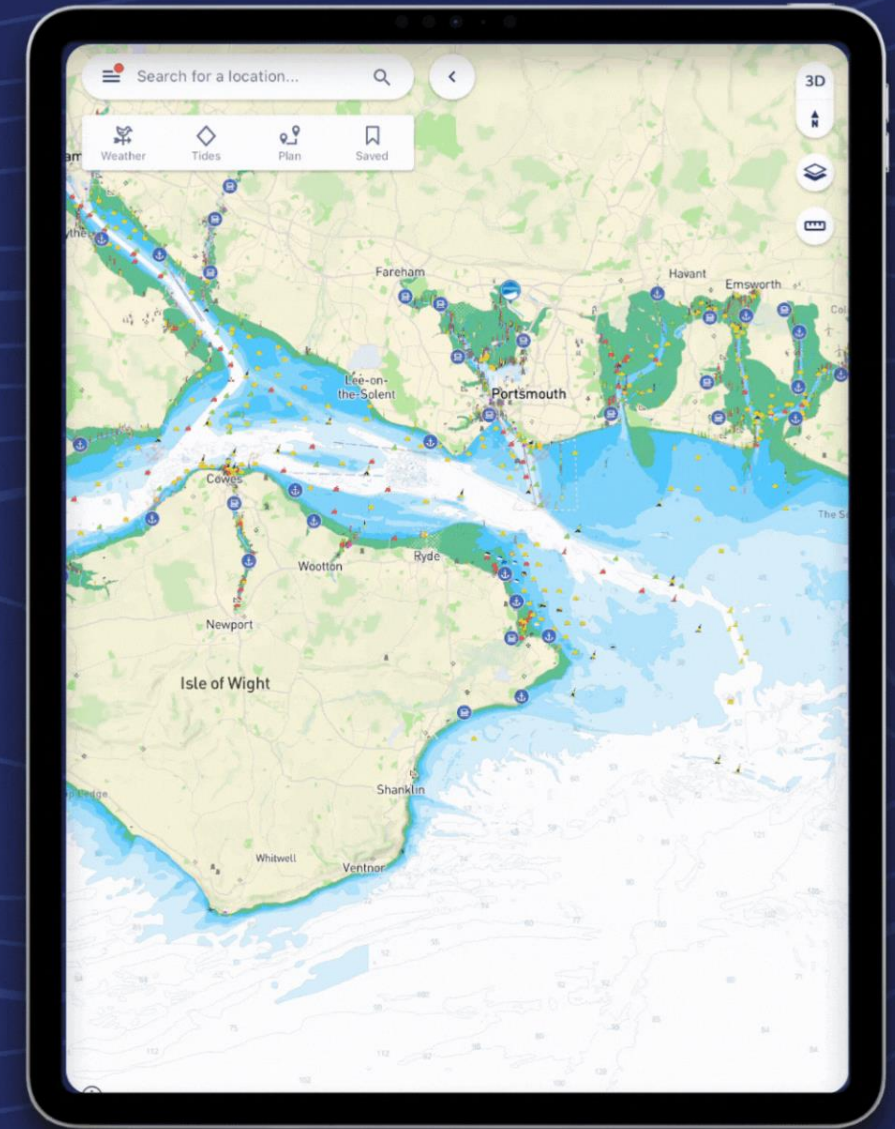
It's like Google Maps for boats.

Why shouldn't navigation on water be as seamless as it is on land?

Savvy Navvy is the **only digital navigation solution** that provides:

1. Beautiful clutter free savvy charts™
2. Smart routing that knows the waters, weather & tides
3. Visual departure scheduler to optimize your timing
4. Sensitive seabed data and marine protection zones

Clutter-free Charts



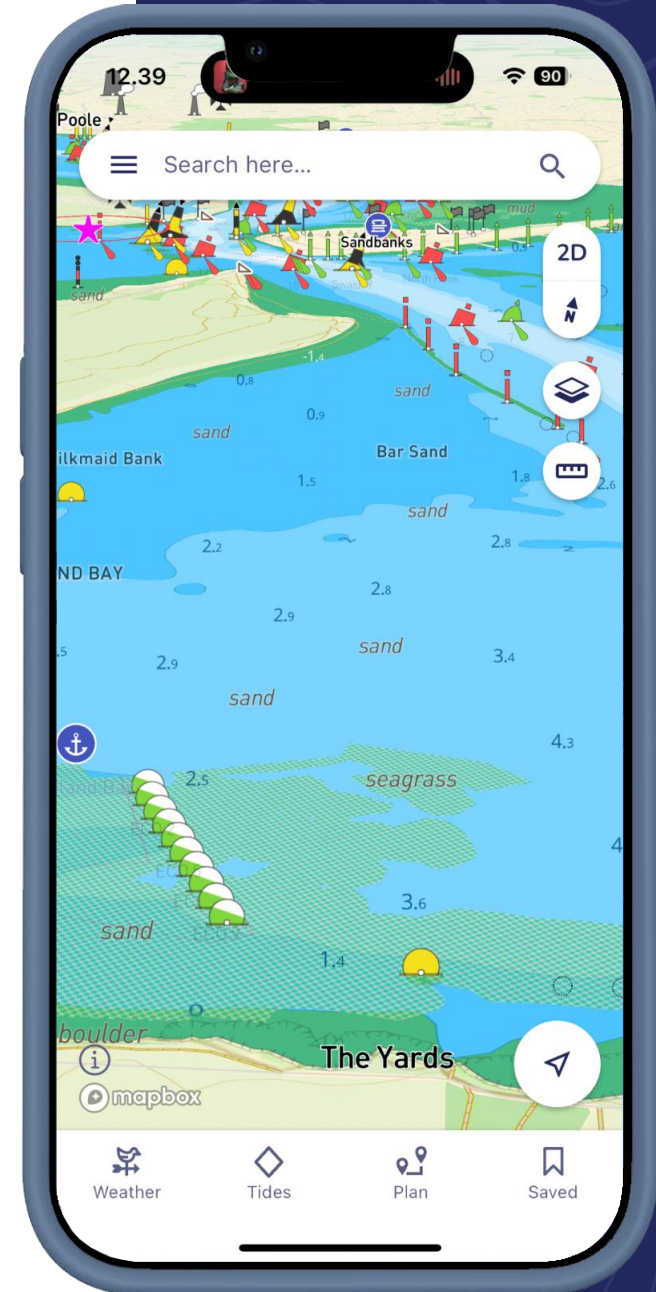
Like Google Maps for boats

- **but greener.**

We give boaters the data they need to make more sustainable decisions.

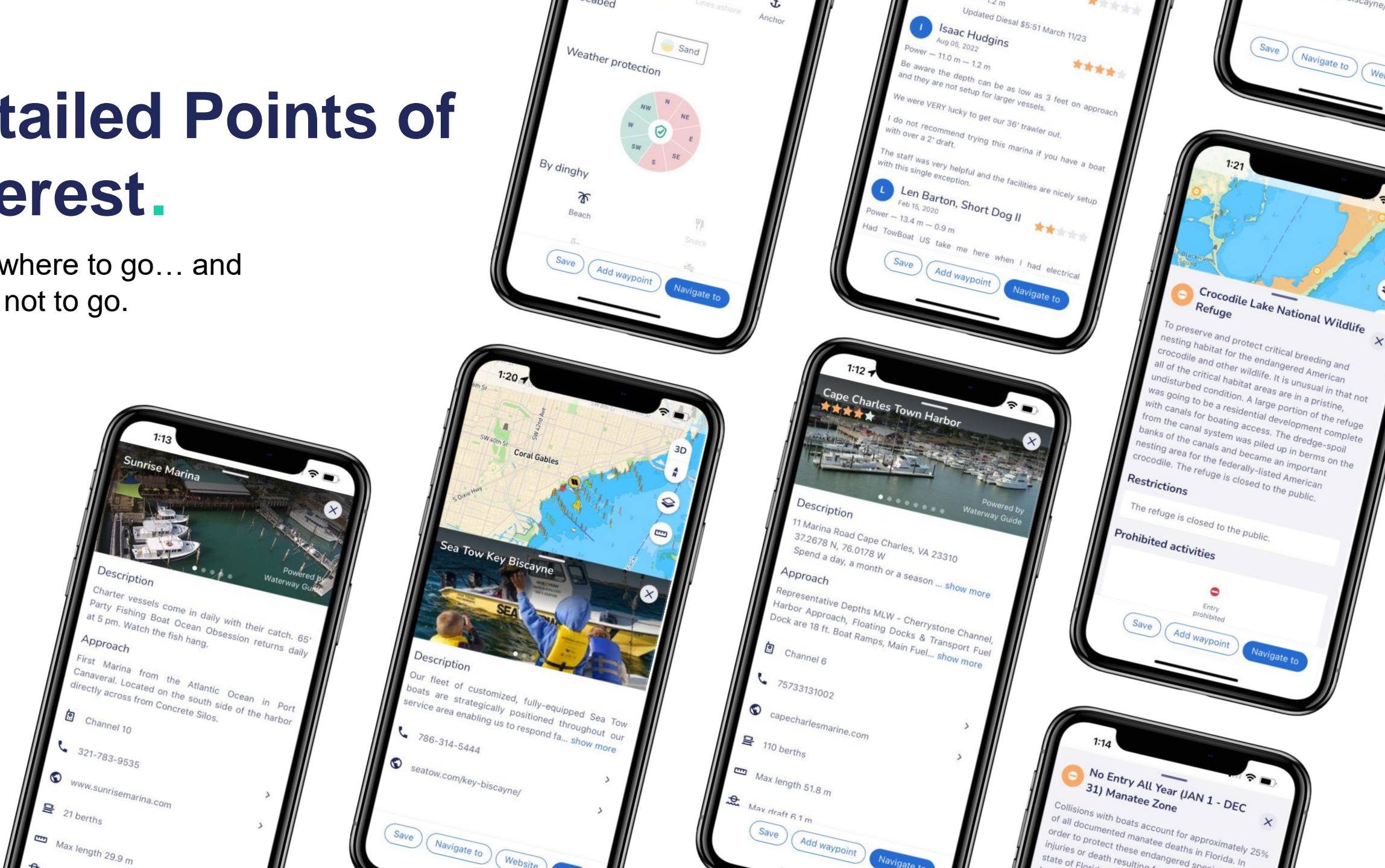
Savvy Navvy is the **only digital navigation solution** that shows:

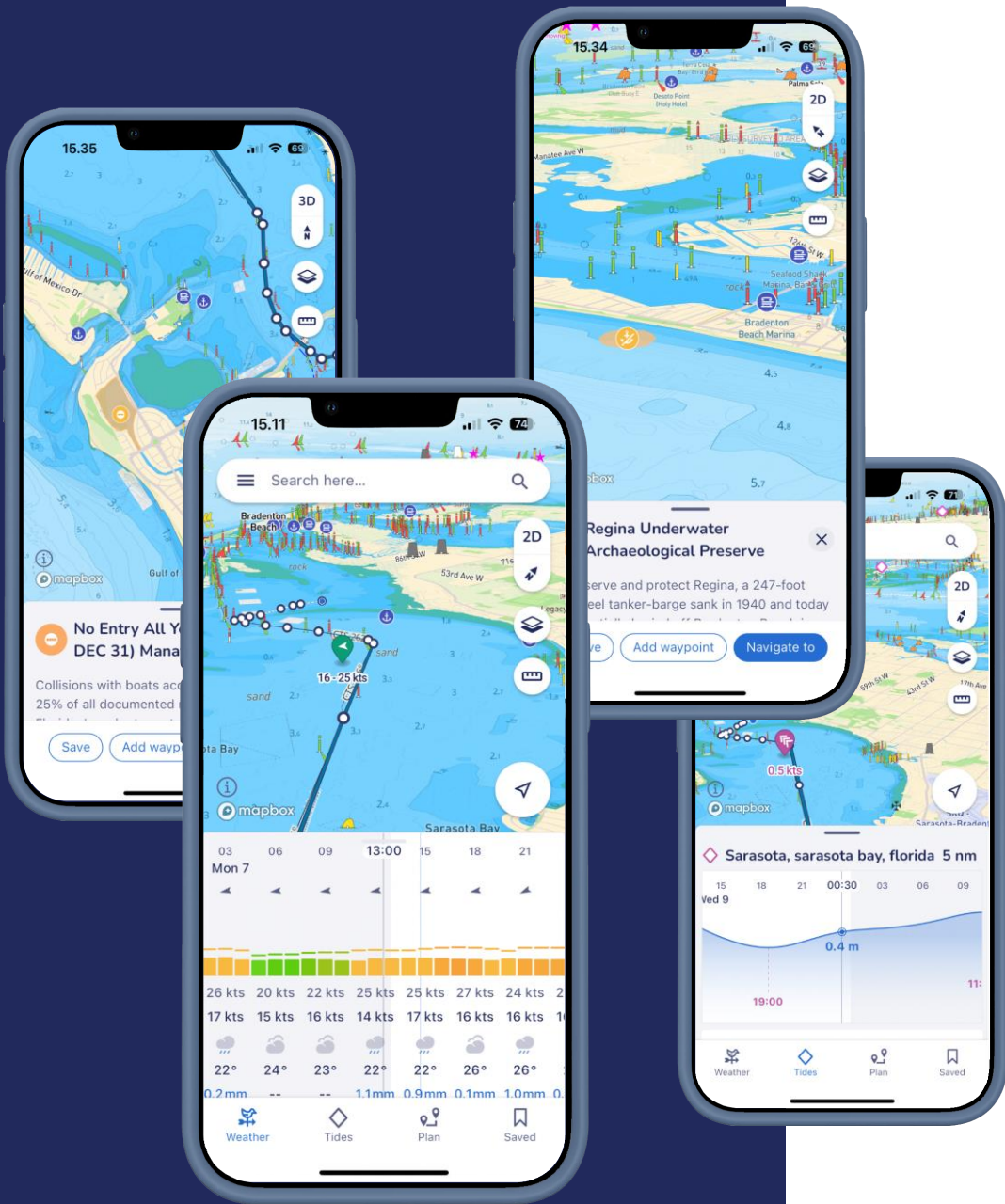
1. UK seagrass location data
2. UK Advanced Mooring System location data
3. Global ProtectedSeas Marine Protection Zone data
4. The Bailiwick Eelgrass Exploration Project (BEEP) partners in Guernsey and Alderney and the Government of Jersey; Eelgrass data
5. Up to 20,000 MPA's globally managed by Protected Seas.



Detailed Points of Interest.

Know where to go... and where not to go.





Data Integration.

Weather

26 global, blended models including ECMWF.

Tide

Licensed Worldtides data built into our routing algorithm.

Marine Protected Areas

Up to 20,000 MPA's globally managed by Protected Seas.

david@savvy-navvy.com



EMODnet

European Marine
Observation and
Data Network

North Tyrrhenian Port Network Authority

Michele Bonistalli, North Tyrrhenian Port Network Authority



The European Marine Observation and Data Network (EMODnet) is financed by the European Union under Regulation (EU) 2021/1139 of the European Parliament and of the Council of 7 July 2021 establishing the European Maritime, Fisheries and Aquaculture Fund.



EMODnet for Business workshop: Marine
Data for ports, marinas and boating



From Logistic Hub to Data Hub: Livorno Port Experience

North Tyrrhenian Port Network Authority
Michele Bonistalli
Development, EU Programs and Innovation Dept.

22 October 2024

THE PORT OF LIVORNO

Livorno is an international seaport and a core node locate along TEN-T SCANMED corridor :

- Multipurpose (containers, break/dry/liquid bulk, Ro-Ro);
- passengers and freight;
- freight village (RRT), car stocking (25,000 cars capacity);
- Coordinator of a comprehensive maritime cluster encompassing Piombino and minor ports in Tuscan Islands

[Video](#)



AdSP MTS

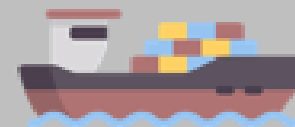
North Tyrrhenian Port Network Authority



2023 port numbers

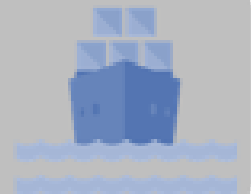
30.335.779

tons handled



6.313

Ships served



3.060.797

Ferry passengers



634.882

Cruise passengers



467.312

Ro-ro



550.966

New cars



From Logistic Hub to Data Hub



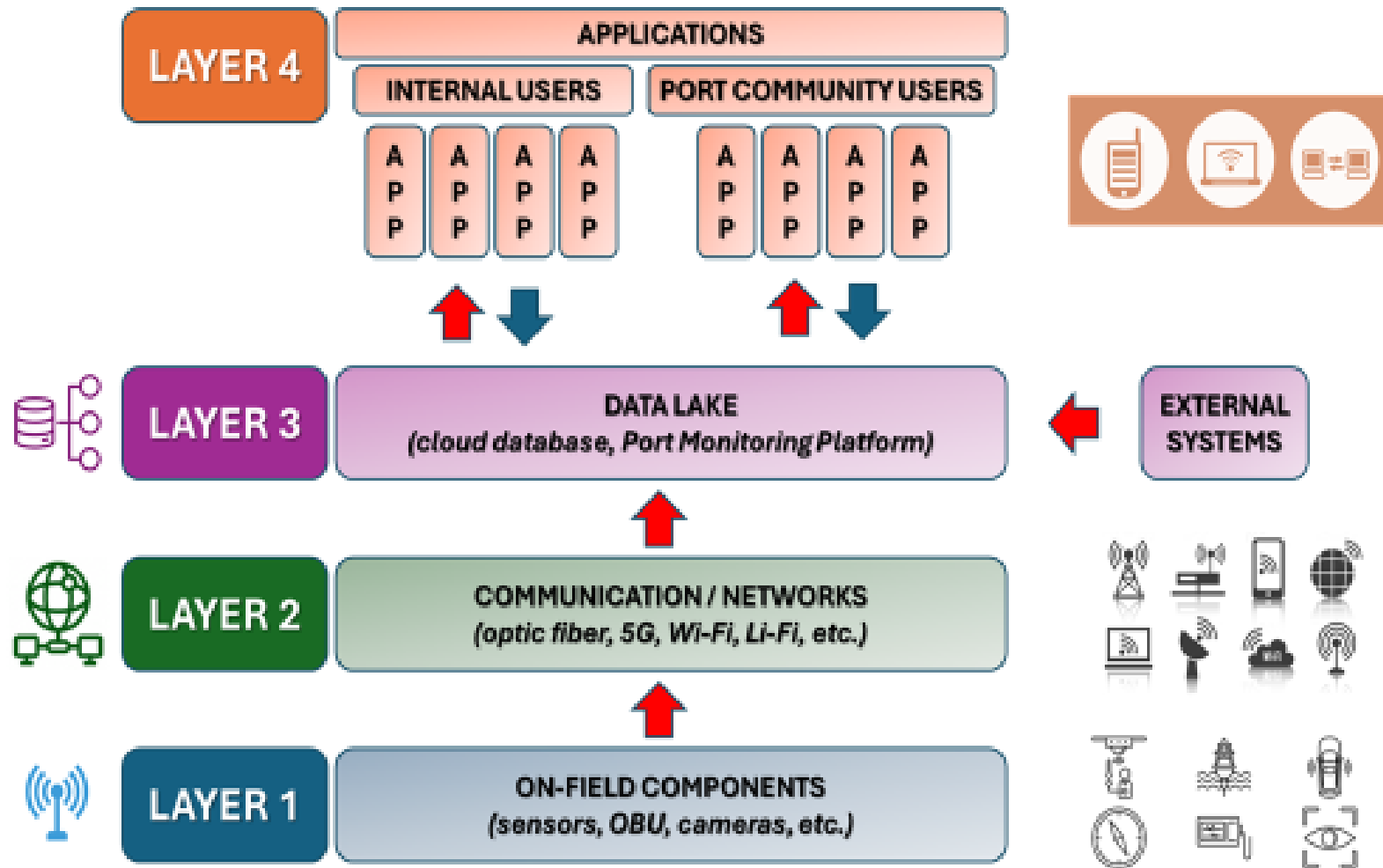
efficiency

DATA

sustainability



Decoupled layer architecture for advanced port monitoring



- ❖ The decoupled layers architecture in port monitoring separates components for enhanced flexibility and scalability.
- ❖ It promotes an open architecture that allows interoperability and integration of various systems.
- ❖ Scalability achieved by independently scaling different layers based on requirements and technology advancements.

DIGITAL INFRASTRUCTURE – the on field components



Acoustics



Pollutants



Photonic Radars

resourceType	4
creationTime	2019-03-18 17:50:43+01:00
resourceID	Syc21RvA4
resourceName	4-20190319165043653menP
lastModifiedTime	2019-03-18 17:50:43+01:00
expirationTime	2021-03-18 17:00:43+01:00
stateTag	9
parentID	10
parentName	None
creator	SIDREPORT bathymetry
comment	res_data https://www.dipartimentoamm.com/Livorno/Livorno/Livorno/Livorno/Livorno/072227... StorageId https://www.dipartimentoamm.com/Livorno/Livorno/Livorno/Livorno/Livorno/182227...



Bathymetric probes



Smart Cameras



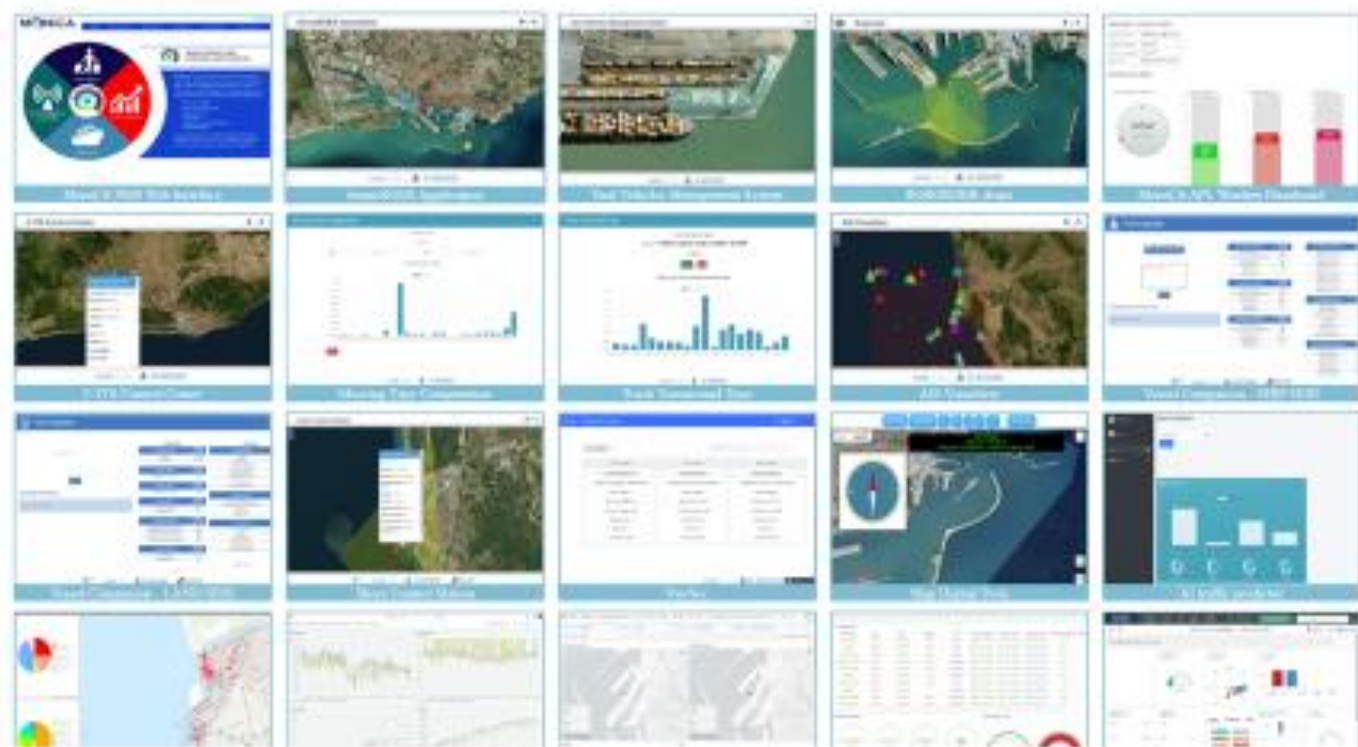
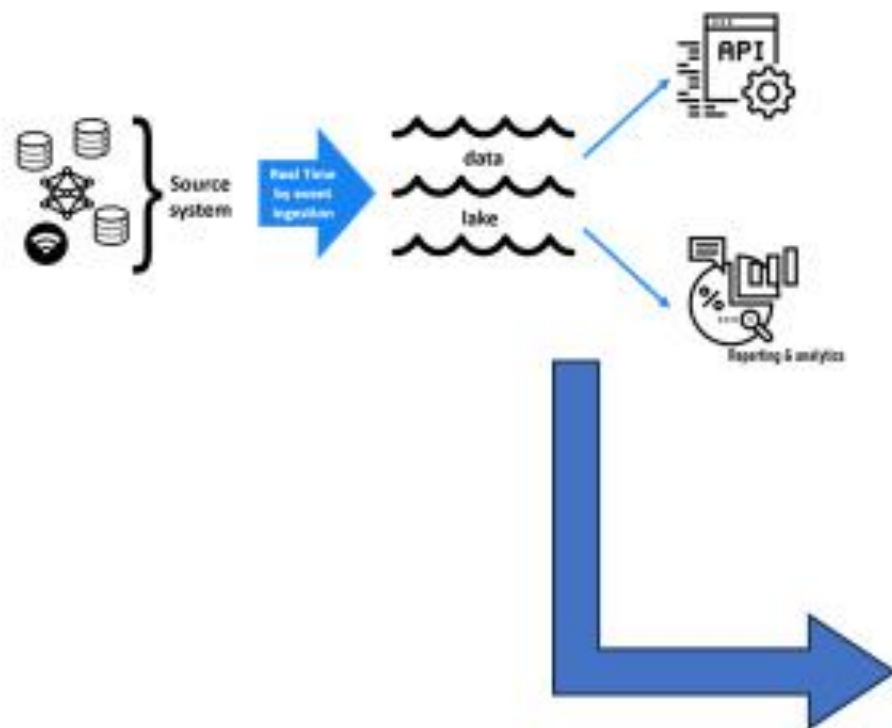
Meteo



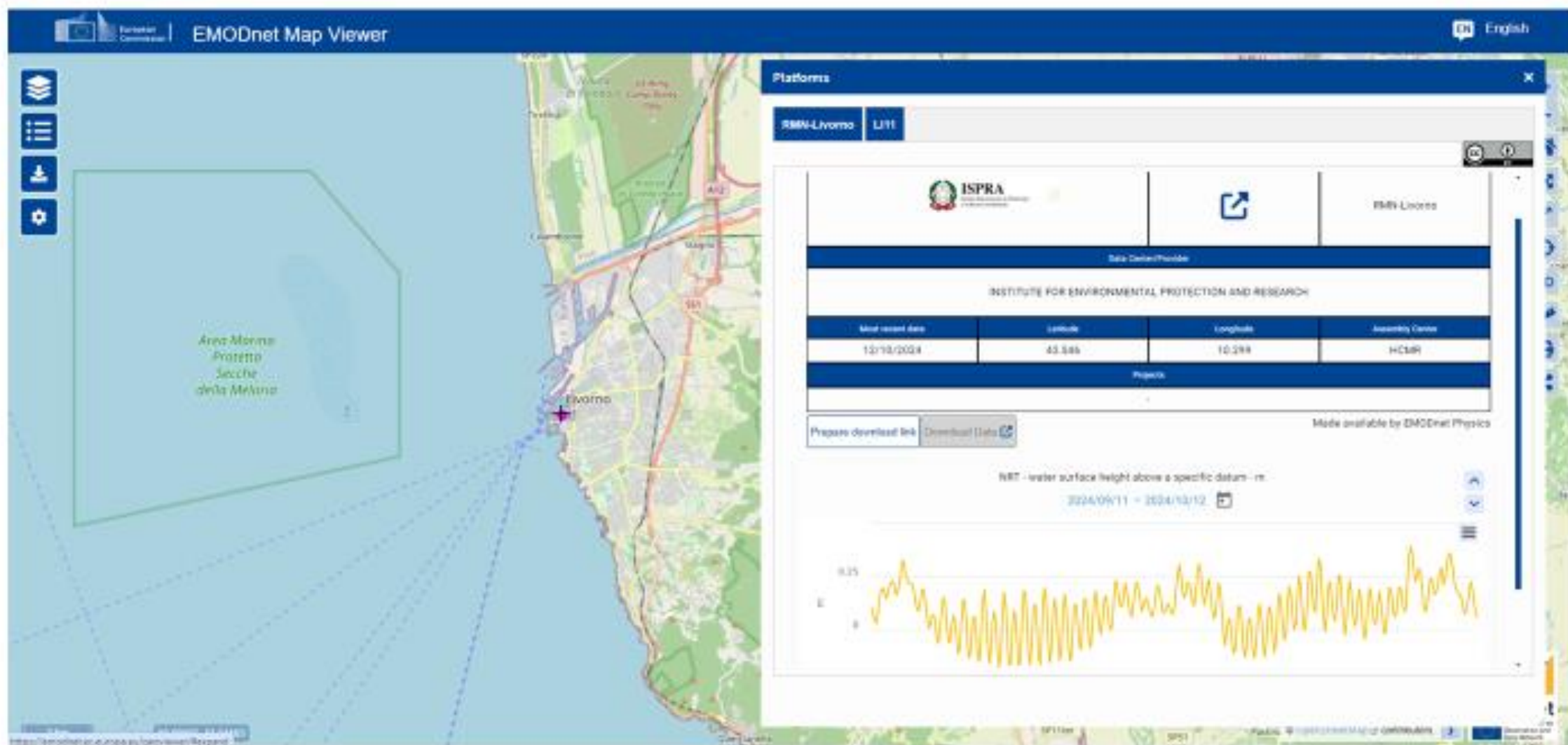
CCAM

DIGITAL INFRASTRUCTURE: platform and application layer

MONI.C.A. PLATFORM – MONITORING AND CONTROL APPLICATION



EMODnet - Key role in the new paradigm



The “IoT – AI – Digital Twin” Triptych



Interconnected Technologies

Digital twins, AI, and IoT integration enables seamless data flow and analysis for informed decision-making.



Dynamic Decision-Making

Utilizing real-time data from digital twins and IoT sensors, AI algorithms can generate dynamic insights for proactive decision-making.



Predictive Capabilities

The combined power of digital twins, AI, and IoT allows for predictive analytics, forecasting future scenarios, and optimizing operational strategies.



PORT DEVELOPMENT AND PLANNING + PREDICTIVE INFRASTRUCTURE MAINTENANCE + SECURITY & EMERGENCY RESPONSE MEASURES



EMODnet



European Marine
Observation and
Data Network



**Autorità di Sistema Portuale
del Mar Tirreno Settentrionale**

Porti di Livorno - Piombino - Portoferraio - Rio Marina - Cavo - Capraia

Thank you!

Michele Bonistalli

Development, EU Programs and Innovation Dept.

m.bonistalli@portaltotirreno.it



EMODnet

 European Marine
Observation and
Data Network

Copernicus Marine Service

Isabel García-Hermosa, Mercator Ocean International



The European Marine Observation and Data Network (EMODnet) is financed by the European Union under Regulation (EU) 2021/1139 of the European Parliament and of the Council of 7 July 2021 establishing the European Maritime, Fisheries and Aquaculture Fund.



EMODnet

European Marine
Observation and
Data Network



Q&A and open floor plenary discussion



EMODnet

European Marine
Observation and
Data Network



Introducing key topics for the Breakout discussions

Breakout Discussions

Introducing key topics for the Breakout discussions

- We will use Padlet for the discussion sessions
<https://padlet.com/megantijssens/emodnet-marine-data-for-ports-marinas-and-boating-39ey87q8gd5r5r58>
- **Breakout Discussion Session 1:** Gathering feedback on existing and emerging marine data needs and requirements to support the ports, marinas and boating sector.
Session moderators: Alessandro Pititto (Cogea – Bip Group, Italy, EMODnet Human Activities) and Helen Lillis (JNCC, EMODnet Seabed Habitats)
 - What types of data do you need about the Marine environment and human activities at sea, and why?
 - Are these data needs local, national or regional specific?
 - How do you currently get the Marine data you need for your ports, marinas, and boating activities?
 - Are there any types of Marine data that you need but can't find easily?
- **Breakout Discussion Session 2:** Discussing challenges and barriers for data sharing by the ports, marinas and boating sector and how EMODnet Data Ingestion can support this process.

The EMODnet Secretariat will now demonstrate a short Introduction to Padlet....

Megan Tijssens + 1 • 4h

EMODnet Marine data for Ports, Marinas and Boating

Add your response to the discussion questions below.

Discussion 1



What types of data do you need about the marine environment and human activities at sea, and why?



Are these data needs local, national or regional specific?



How do you currently get the marine data you need for your ports, marinas, and boating activities?



<https://padlet.com/megantijssens/emodnet-marine-data-for-ports-marinas-and-boating-39ey87q8gd5r5r58>



EMODnet

European Marine
Observation and
Data Network

A decorative white graphic on the left side of the slide, consisting of a solid white circle followed by three curved lines that resemble a signal or broadcast icon.

Breakout Discussion session 1

Breakout Discussion session 1

Gathering feedback on existing and emerging marine data needs and requirements to support the ports, marinas and boating sector.

- We will use Padlet for the discussion sessions
<https://padlet.com/megantijssens/emodnet-marine-data-for-ports-marinas-and-boating-39ey87q8gd5r5r58>
- What types of data do you need about the Marine environment and human activities at sea, and why? Are there regional or local specificities?
- Are these data needs local, national or regional specific?
- How do you currently get the Marine data you need for your ports, marinas, and boating activities?
- Are there any types of Marine data that you need but can't find easily?



EMODnet

European Marine
Observation and
Data Network

A white speaker icon with sound waves, indicating audio content.

5 minutes Comfort break



EMODnet

European Marine
Observation and
Data Network



Plenary highlights for breakout session 1 by moderators

slido



What types of marine environmental data are most useful to you for your ports/marinas/boating activities?

① Start presenting to display the poll results on this slide.



EMODnet

European Marine
Observation and
Data Network



Plenary highlights for breakout session 1 by moderators



EMODnet

European Marine
Observation and
Data Network

JPI Oceans Scoping Action on European Marina

Melanie Symes, TransEurope Marinas



The European Marine Observation and Data Network (EMODnet) is financed by the European Union under Regulation (EU) 2021/1139 of the European Parliament and of the Council of 7 July 2021 establishing the European Maritime, Fisheries and Aquaculture Fund.

JPI Oceans Scoping Action:
European Marinas Network

Melanie Symes
TransEurope Marinas

22 October 2024

Rationale for the Scoping Action



Objectives & outcomes

Objectives:

- Establish a network of marinas for coordinated environmental monitoring and data collection.
- Develop guidelines for marinas to use standardised sensor packages.
- Create a centralised data repository.
- Empower marinas as hubs for ocean stewardship and citizen science.
- Inform policy and decision-making related to marine environments.



Outcomes & impacts:

- Improved data coverage and understanding of marine environments.
- Improved capacity building and knowledge sharing.
- High-quality citizen science contributions.
- More effective management and conservation efforts.
- Enhanced ocean literacy and stewardship.
- Support for policy decisions and maritime spatial planning.



EMODnet

European Marine
Observation and
Data Network

A decorative white graphic on the left side of the slide, consisting of a solid white circle followed by three curved lines that resemble a signal or data transmission icon.

Win-win marine data collection and sharing



EMODnet

European Marine
Observation and
Data Network

EMODnet Data Ingestion: EU public service supporting the Blue Economy towards FAIR marine data sharing

Sissy Iona /HCMR (Greece)

Dick M.A. Schaap/MARIS (Netherlands)

22 October 2024: EMODnet Marine Data for ports, marinas and boating Workshop



The European Marine Observation and Data Network (EMODnet) is financed by the European Union under Regulation (EU) 2021/1139 of the European Parliament and of the Council of 7 July 2021 establishing the European Maritime, Fisheries and Aquaculture Fund.

EMODnet Data Ingestion

A free and open EU service to all for submission and sharing of marine data

- **The Need:** more data for scientific research, modelling, environmental management, economic activities, and EU ocean policies, initiatives and agendas
- **Our Mission:** increase and diversify data submissions and integration into EMODnet for all types of users (policy, research, private sector and Blue Economy, society, EU DTO, global initiatives like Ocean Decade)
- **The Challenge:** Many marine data collected by public & private sectors are not discoverable, accessible, or re-usable despite the need for more data
- **Our Objectives:**
 - Identify stakeholders and promote data sharing
 - Provide a public service to the in-situ marine data collection communities for submitting their data
 - Support data producers to make their data FAIR for easier integration into EMODnet



Initiated in 2016 by EU DG MARE

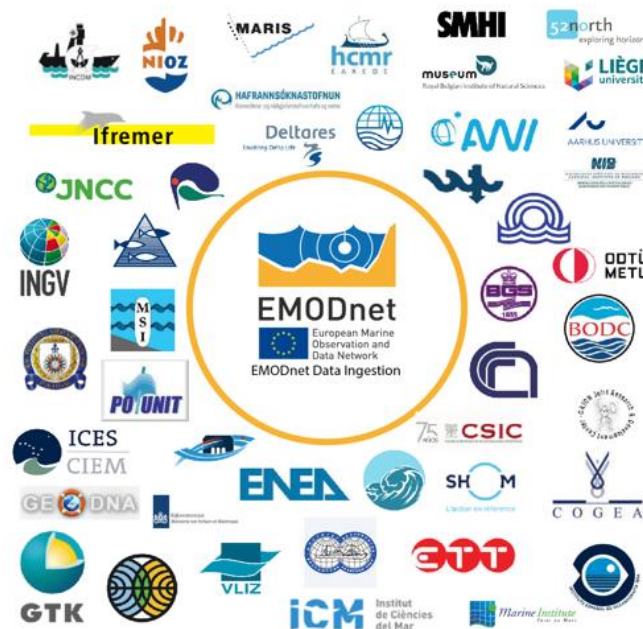
BATHYMETRY



BIOLOGY



CHEMISTRY



GEOLOGY



HUMAN ACTIVITIES



PHYSICS

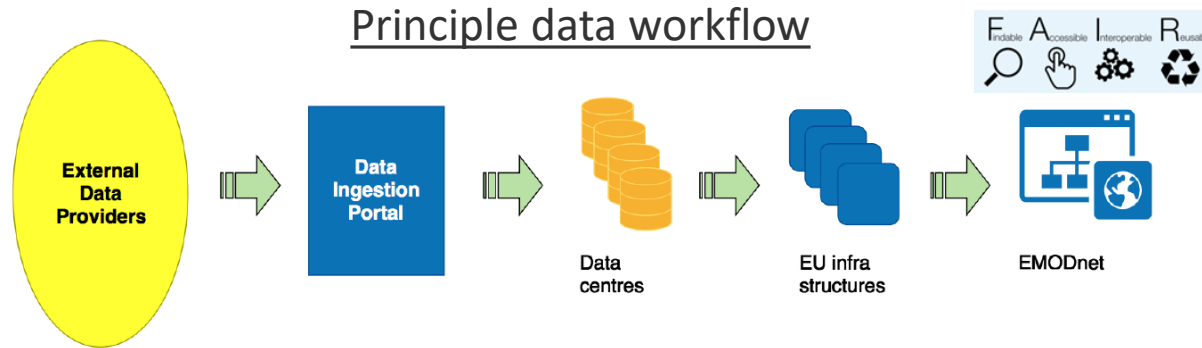


SEABED HABITATS

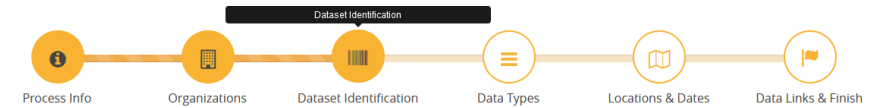
Network of 50 Data Centres, specialized marine centres, and all EMODnet thematic coordinators ensuring provision of trustable data and products

Ingestion process

Streamlining the integration of data sources into EU data infrastructures and EMODnet



On line submission form with structured metadata



Dataset Identification

* = Required

DATASET GENERAL INFORMATION	
Title of dataset *	Carbon parameters in the Western tropical Atlantic
Narrative summary of dataset *	Surface alkalinity and total inorganic carbon (in $\mu\text{mol/kg}$) were measured by closed-cell potentiometric titration during PIRATA Brazilian cruises. Important Note: This submission has been initially submitted to SEA scieNtific Open data Edition (SEANOE) publication service and received the recorded DOI. The metadata elements have been further processed (refined) in EMODnet Ingestion Service in order to conform with the Data Submission Service specifications.

DATASET FORMATS	
Dataset format *	ASC
Language used in dataset	English

Distinction between 2 phases in the life cycle of a data submission:

- **Phase I:** from data submission to publishing 'as is'
- **Phase II:** integration into NODCs, European Infrastructures and EMODnet for publishing and sharing with the wider community

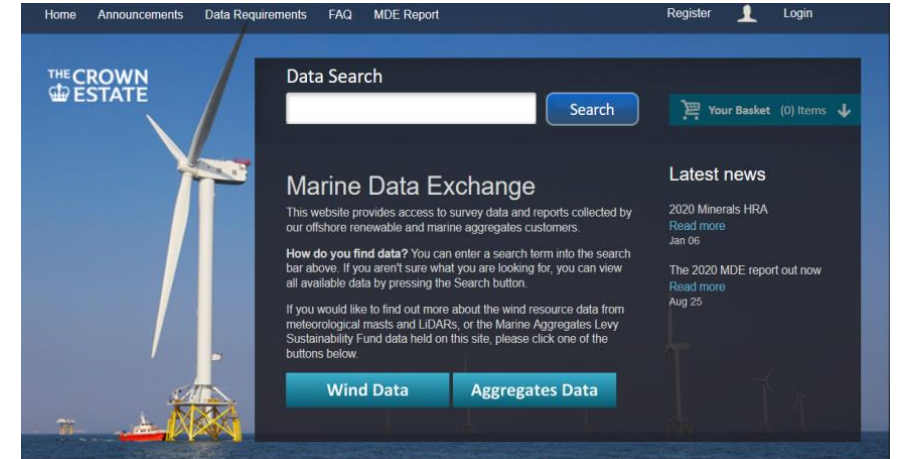
The **ownership** of the data is **transparent and clear** throughout the process

EMODnet relies on data which follow **FAIR standards** of a number of **leading European data aggregator infrastructures** (such as e.g. SeaDataNet, EurOBIS, ICES, EGDI, etc.)

Successful use cases

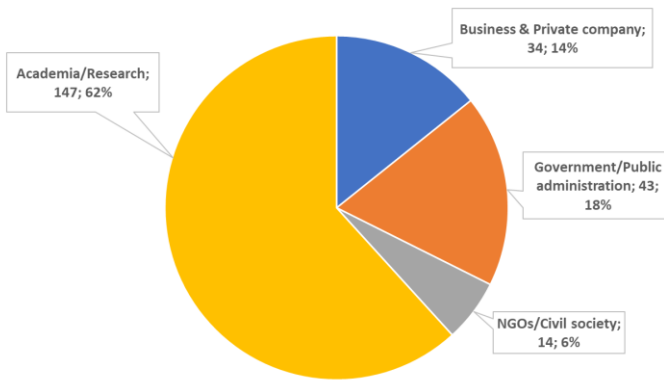
Examples from private sector

- Coupling with The Crown Estate (TCE) Marine Data Exchange (MDE) for data from offshore renewable energy sector through MEDIN cooperation
- Monitoring data from windfarms in the Dutch North Sea sector
- More use cases at: <https://www.emodnet-ingestion.eu/promotion>).

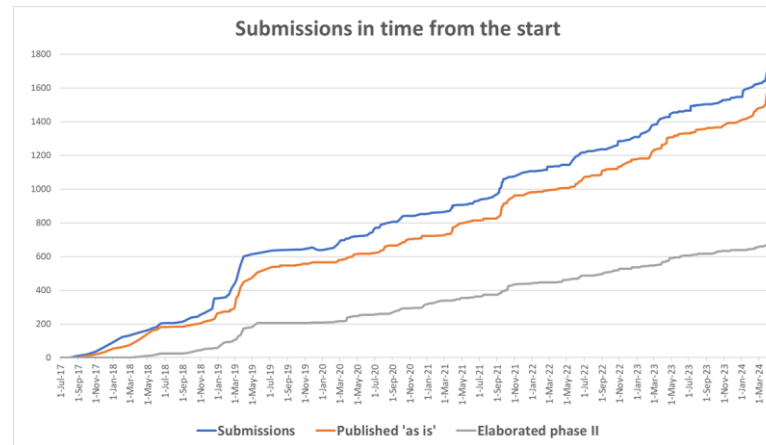


Statistics for all sectors

Type of organisations



Submissions in time from the start



Our data providers in total: >1700 submissions from 240 Organizations from Academic, Governmental, Business, NGOs sectors

EMODnet & Data Ingestion: How we can support you

Examples from on-going collaborations to improve data sharing:

- Supporting with **EU RTD projects**:
 - [Guidelines](#) for European project data submissions: gives information about standards and pathways projects to follow
- Dialogue with **stakeholders from offshore renewable and aquacultures sectors** to support their management procedures



EMODnet Ingestion **can support** the **Blue Economy sector** :

- Exploration of the existing data flow pipelines for long-term uptake of data into EMODnet (Delayed mode exchanges or Real-Time?)
- Identification of the appropriate data that fit EMODnet and Blue Economy scope and needs
- Training on the standards and procedures as in use in EMODnet (such as FAIR formats and metadata, data quality level)



EMODnet
European Marine
Observation and
Data Network

EMODnet for Horizon Europe and EU Mission Restore our Ocean and Waters: Guidelines for European project data submissions

Marine data as valuable assets:

Data from the marine environment are a valuable asset. Rapid access to reliable and accurate marine data and information is vital in addressing threats to the marine environment, in the development of policies and legislation to protect vulnerable areas of our coasts and oceans, in supporting research with the evidence-base to understand the complexity of marine ecosystems, trends, and in forecasting future changes. Likewise, better quality and more easily accessible marine data is a prerequisite for further sustainable economic development, so-called 'blue growth', and to achieve the ambitious targets of the EU Green Deal and EU Mission: Restore our Ocean and Waters.

EMODnet:

The European Marine Observation and Data Network (EMODnet)¹ is an established European Commission *in situ* marine data service, and a flagship initiative funded by EC DG MARE. Complementary to Copernicus Marine, EMODnet is one of the main Marine Knowledge Initiatives of the European Union. Through its Portal (<https://emodnet.ec.europa.eu/en>) EMODnet provides access to European marine data across seven discipline-based themes and its Ingestion service:

Bathymetry	Biology	Chemistry	Geology
			
Data and maps on bathymetry (water depth), and coastlines, e.g., Digital Terrain Model	Data and maps on temporal and spatial distribution of species abundance and biomass from several taxa.	Data and maps on the concentration of nutrients, organic matter, contaminants, and marine litter in water, sediment and biota.	Data and maps on seabed substrate, sea-floor geology, coastal behaviour, geological events, minerals, and submerged

EMODnet for Horizon Europe and EU Mission Restore our Ocean and Waters: Guidelines for European project data submissions

Recommendation: potential data providers **take notice of the standards** and **get into touch with members of the EMODnet Ingestion network**, mostly NODCs, in their country **to get a better understanding of the standards and the approach to be applied for sharing and ingesting their data**

Join us and share your data

emodnet.ec.europa.eu/en/contribute-data-emodnet



EMODnet



European Marine
Observation and
Data Network



emodnet.ec.europa.eu

Stay up-to-date with
the latest news





EMODnet

European Marine
Observation and
Data Network



Q&A and Open floor plenary discussion



EMODnet

European Marine
Observation and
Data Network

A decorative white graphic on the left side of the slide, consisting of a solid white circle followed by three curved white lines that resemble a signal or broadcast icon.

Breakout Discussion session 2

Breakout Discussions

Introducing key topics for the Breakout discussions

- We will use Padlet for the discussion sessions
<https://padlet.com/megantijssens/emodnet-marine-data-for-ports-marinas-and-boating-39ey87q8gd5r5r58>
- **Breakout Discussion Session 1:** Gathering feedback on existing and emerging marine data needs and requirements to support the ports, marinas and boating sector.
- **Breakout Discussion Session 2:** Discussing challenges and barriers for data sharing by the ports, marinas and boating sector and how EMODnet Data Ingestion can support this process.
Session moderators: Sissy Iona (HCMR, Greece; EMODnet Data Ingestion) and Antonio Novellino (ETT, Italy; EMODnet Physics)
 - Do you/your organisation collect marine environmental data? (Please state which types of data e.g. temperature data)
 - Are you or your organization currently sharing data with EMODnet? If not, could this be possible in the future?
 - What are the challenges of sharing data and how can EMODnet help?

Discussion 2



Do you collect marine environmental data? (Please state which types of data e.g. temperature data)



Are you or your organization currently sharing data with EMODnet? If not, could this be possible in the future?



What are the challenges of sharing data and how can EMODnet help?



<https://padlet.com/megantijssens/emodnet-marine-data-for-ports-marinas-and-boating-39ey87q8gd5r5r58>

Breakout Discussion Session 2

Discussing challenges and barriers for data sharing by the ports, marinas and boating sector and how EMODnet Data Ingestion can support this process.



- We will use Padlet for the discussion sessions

<https://padlet.com/megantijssens/emodnet-marine-data-for-ports-marinas-and-boating-39ey87q8gd5r5r58>

- Do you/your organisation collect marine environmental data? (Please state which types of data e.g. temperature data)
- Are you or your organization currently sharing data with EMODnet? If not, could this be possible in the future?
- What are the challenges of sharing data and how can EMODnet help?



EMODnet

European Marine
Observation and
Data Network



Plenary highlights for breakout session 2 by moderators

slido

Please download and install the Slido app on all computers you use



What types of marine environmental data or Human Activities data do you collect?

① Start presenting to display the poll results on this slide.



EMODnet

European Marine
Observation and
Data Network



Closing:
Kate Larkin, Head of EMODnet Secretariat

22 October 2024

ONLINE EVENT

SAVE THE DATE

EMODnet for Business

Marine data for ports, marinas and boating



[#MarineData4PortsMarinasBoating](#)



- **Thanks** to all co-organisers and to you all for your participation, interest and inputs!
- A **Workshop Report** with key stakeholder feedback will be produced by the EMODnet Secretariat and made **publicly available with the presentations** by end 2024 on the EMODnet Portal and EC Maritime Forum
- This **workshop is part of a series**, including previous workshops with Aquaculture, Offshore Renewable Energy and Coastal Tourism. Check out the EMODnet Portal News and Events for more details!
- **Have dialogues on EMODnet with your stakeholder networks! Promote your work through an EMODnet Use Case!**
- In **March 2025 EMODnet will host its 4th Hackathon 'Open Sea Lab 4.0'** watch this space for the latest news, with registration opening in November 2024
- **Contact the EMODnet Helpdesk** for specific feedback and questions secretariat @emodnet.ec.europa.eu
- Sign up to the **monthly EMODnet News Digest!**
- **Join the EMODnet Associated Partnership** for a closer dialogue.....

EMODnet Associated Partnership

Strengthen your dialogue with EMODnet as a data user and/or data provider!



- EMODnet services are public, free and open for all;
- The EMODnet Associated Partnership is for stakeholders looking for a stronger dialogue with EMODnet to learn how to best use EMODnet for your marine knowledge needs, and to discuss opportunities for data sharing, etc
- Designed to expand and diversify EMODnet's users and data providers, including with the private sector;
- Flexible, non-funded partnership;
- 35 members (number at October 2024) spanning Small and Medium Enterprises to Large companies and public-private partnerships.

EMODnet Associated Partnership

Application Process



- Sending an **expression of interest describing their organisation**, explaining why they wish to become a member and how it will contribute.
 - The letter with expression of interest should be kept as **brief as possible** and sent by email to **secretariat@emodnet.eu**
- An application can also be made **by an existing partner on behalf of another organisation** with their agreement.
- EMODnet Secretariat will make a Recommendation to DG MARE and Steering Committee.
- The organisation will be informed on the outcome of their application no later than two weeks after the first Steering Committee meeting.



EMODnet



European Marine
Observation and
Data Network



emodnet.ec.europa.eu

Stay up-to-date with
the latest news



Unless otherwise noted the reuse of this presentation is authorised under the [CC BY 4.0](https://creativecommons.org/licenses/by/4.0/) license. For any use or reproduction of elements that are not owned by the EU, permission may need to be sought directly from the respective right holders.

The European Marine Observation and Data Network (EMODnet) is financed by the European Union under Regulation (EU) 2021/1139 of the European Parliament and of the Council of 7 July 2021 establishing the European Maritime, Fisheries and Aquaculture Fund.