



EMODnet



European Marine
Observation and
Data Network

Progress EMODnet Bathymetry

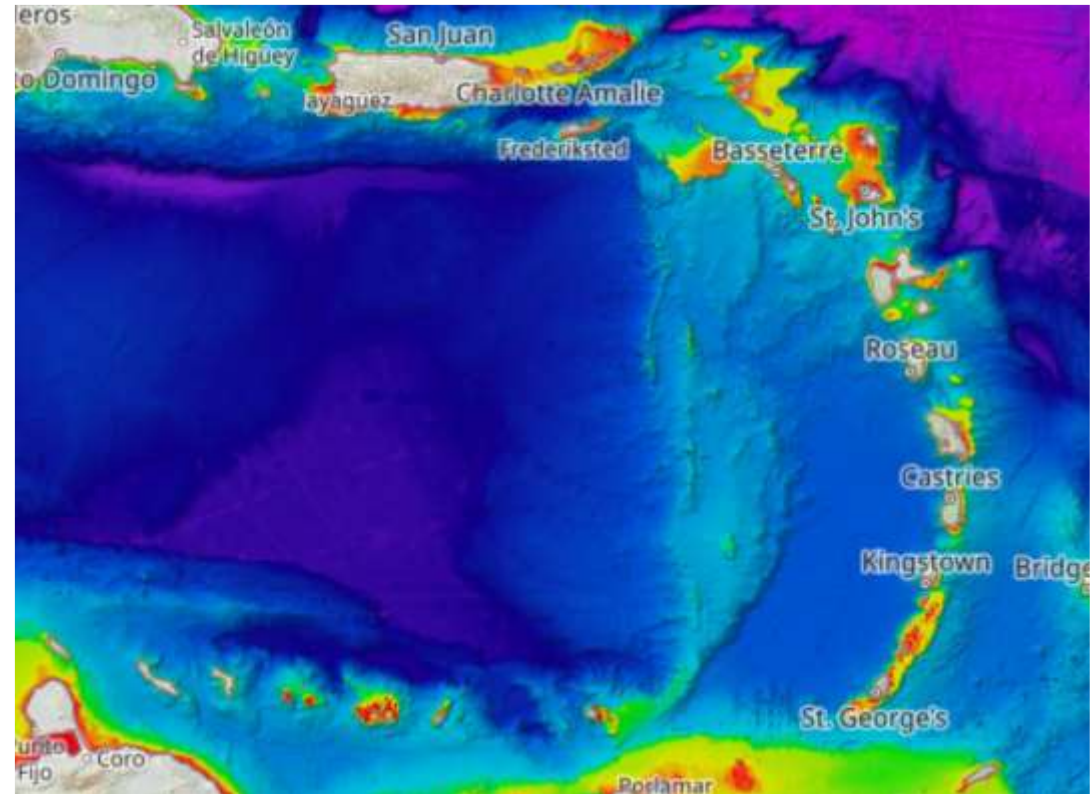
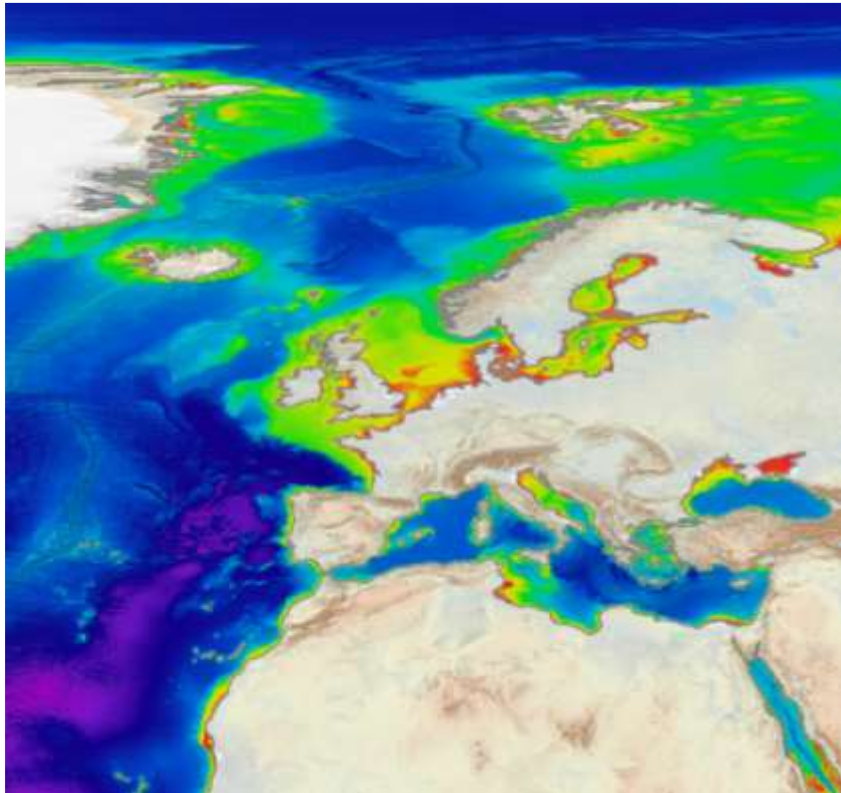
13th EMODnet Technical Working Group
04-05 April 2023

Dick M.A. Schaap

Bathymetry

New product releases

- **EMODnet DTM 2022 release ready** – will be launched soon for viewing, downloading and M-to-M (WMS,WFS,WCS,WMTS)
 - Grid resolution 1/16 * 1/16 arc minutes (circa 115 * 115 m2) and for LAT and MSL
 - Based upon **21.790** dataset entries (21647 unique CDI references and 143 composite DTMs / Satellite Derived Bathymetry product references) and GEBCO 2022; updated Source Reference and Quality Index map layers
 - Now also part of the Caribbean Sea region covered



New product releases

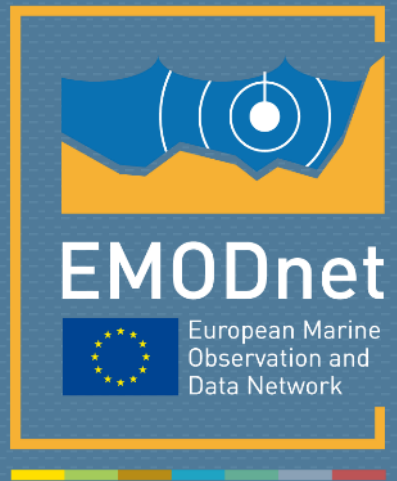
- **2022 release of satellite derived coastlines for Europe and Caribbean at LAT, MSL and MHW reference levels**
 - Based upon Sentinel-2 and Landsat-8
 - Tidal levels using Global Tide Surge Model (GTSM)
 - Integrated in OGC services, CP Map Viewer and data set downloadable from CP Product Catalogue
 - Report in CP Reports catalogue
- **2022 updated inventory of national baselines and official coastlines**
 - Shapefiles downloadable from CP Product Catalogue
 - Report in CP Reports catalogue
- **Number of high resolution DTMs for selected areas expanded from 245 to 264 files**
 - Resolution varies between 1/32 and 1/512 arc minutes
 - Integrated in OGC services, CP Map Viewer and HR-DTM files downloadable from CP Map Viewer and CP Product Catalogue
- **Number of data sets gathered:**
 - Survey data sets in SeaDataNet CDI service increased last 2 years from 30560 to 41315 entries
 - Number of composite DTMs increased from 207 to 274
 - Overall number of Data Providers is now 63 (of which 43 in consortium)
- **Use stats over last 2 years:**
 - 100.000 downloads of bathymetry data products
 - By circa 12.000 users
 - More than 68 million OGC service requests

Migration actions

- Bathymetry narrative
- Transferring technical reports and guidelines to CP Reports catalogue
- SeaDataNet CDI service for survey data and Sextant service for composite DTM data considered as external services; URLs amended
- Metadata entries prepared for all Bathymetry products, such as DTMs, individual DTM tiles, HR-DTM files, all map layers (depths, coastlines, quality index, source reference, survey data sets, isolines, ..) including new links for downloading and viewing
- All product metadata in Sextant and updated CSW service for harvesting by CP Products Catalogue
- Continuation of OGC services for map layers and CDI layer; new WMTS service for 2022 DTM for increased performance
- Tuning with CP Team for matching between Bathymetry map layers and metadata records
- Producing one merged NetCDF file for 2022 DTM of ca 130 GB for use in ERDDAP download service
- Extra map layer with DTM tiles configuration for direct downloading from CP Map Viewer of latest DTM tiles in multiple formats
- Lots of testing

Remaining wishes

- Adding bathymetry formats to ERRDAP service (Geotiff, ESRI ASCII)
 - Improving Get Feature dialogue for source reference layer and survey data sets layer
 - Improving depth information from map click
 - Direct links from Product records to CP Map Viewer folders
-
- Information about CP KPIs
 - Information about maintenance and new product placements



emodnet.ec.europa.eu

Your gateway to marine data in Europe

