

# EMODnet Seabed habitats

---

## 1) Broad-scale map of Eunis habitats

- Resolution 1/8 NM
- Investigation of feasibility and coverage of 1/16 NM

### Data come from

- Emodnet Bathymetry and Geology
- Sample data from partnership and beyond
- MyOcean, ECMWF etc..

### Eunis issues

- No Eunis in Black Sea, with loose ends in Mediterranean
- Take part in EEA's Eunis upheaval



# EMODnet Seabed habitats

---

## 2) Other habitat maps

- Maps from surveys (any scale), not yet effective in Med, Baltic and Black Sea
- Modelled distributions of single habitats (e.g. Mediseh with 3 habitats in Med.)
- Habitat sample data (Ospar)

## 3) Confidence in habitat maps

- Maps from surveys: based on MESH model (metadata)
- Broad-scale modelled map: input from base layers



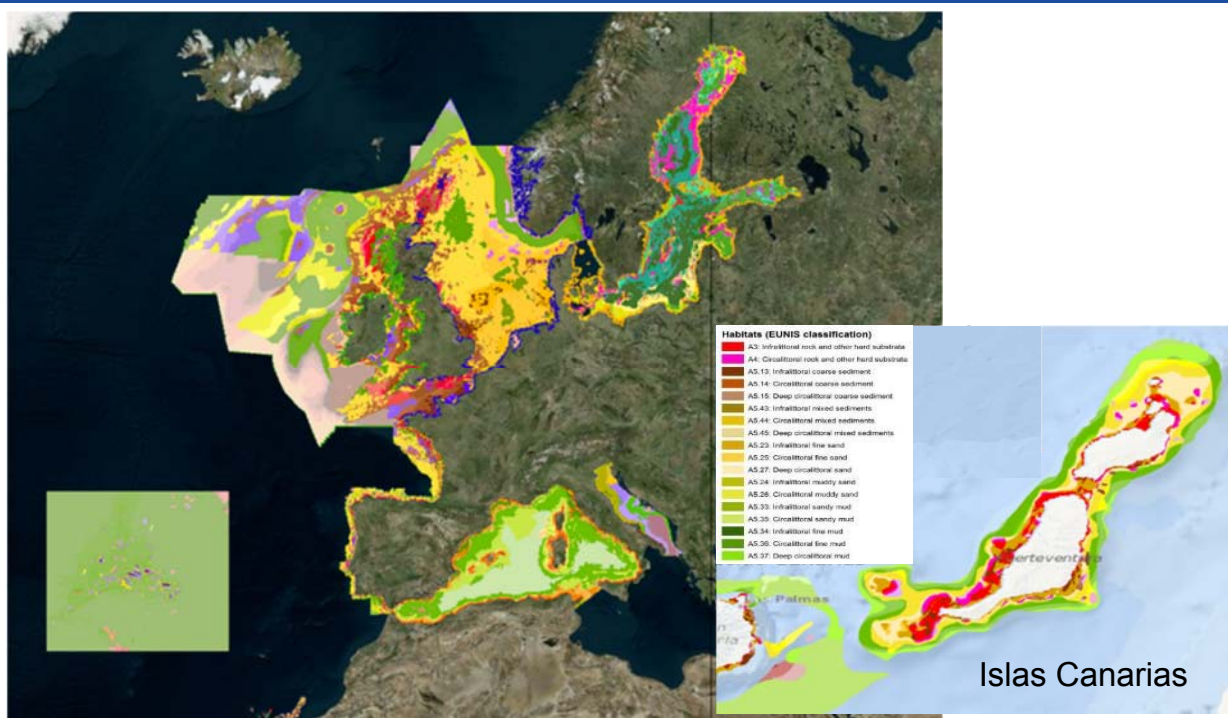
# EMODnet Seabed habitats

## 4) Research issues – Expected publications

- Bathymetric data and geologic elements analysis towards the assessment of coastal rocky seabed (Δρακοπούλου, Κυριακίδου, Σακελλαρίου)
- Linking biology to physical parameters in the Black Sea
- Light thresholds and seabed vegetation: a review
- Habitat map confidence
- On the use of broad-scale benthic habitat maps in the context of ecosystem-based management

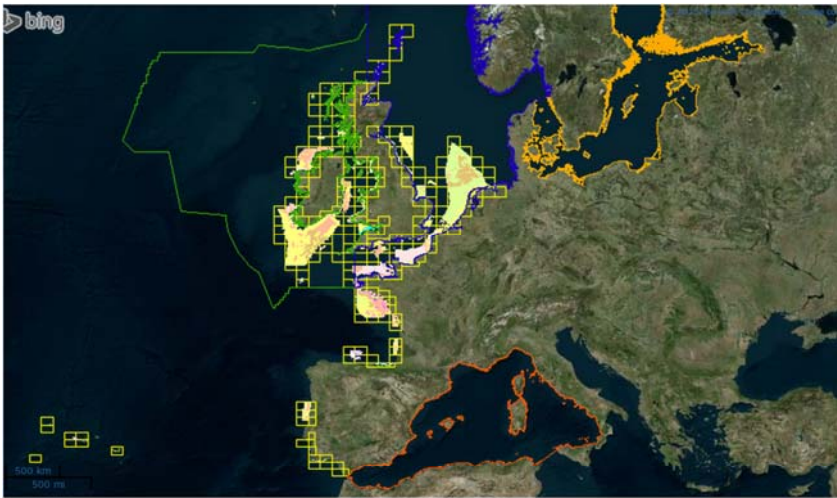


## Broad-scale status (1:1M)



# Survey maps repository

---



Maps from surveys



Map confidence