



# EMODnet Coastal Mapping

SHOM  
gael.morvan@shom.fr



## Objectives

Assess the current availability of digital coastal maps in the EU

Disseminate this information by EMODnet

Share experience of coastal mapping in the EU

Develop standards for best practices

Propose how a future JECMaP could operate



# nsortium

## Hydrographic offices :

ANCE – BELGIUM –  
RMANY – GREECE –  
LAND – ITALY – LATVIA  
NORWAY – PORTUGAL –  
OVENIA – SPAIN -  
EDEN

## Regions :

MR – Regione Lazio

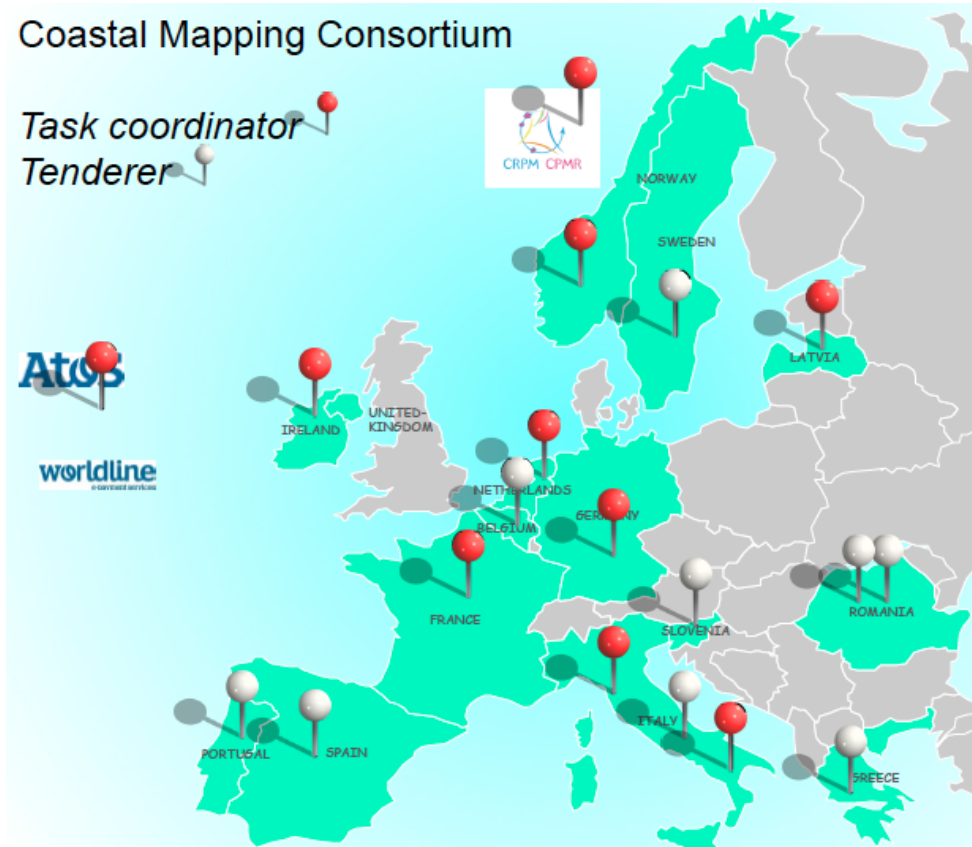
## Public Bodies :

RA – RWS - GeoEcomar  
DNI

## IT company :

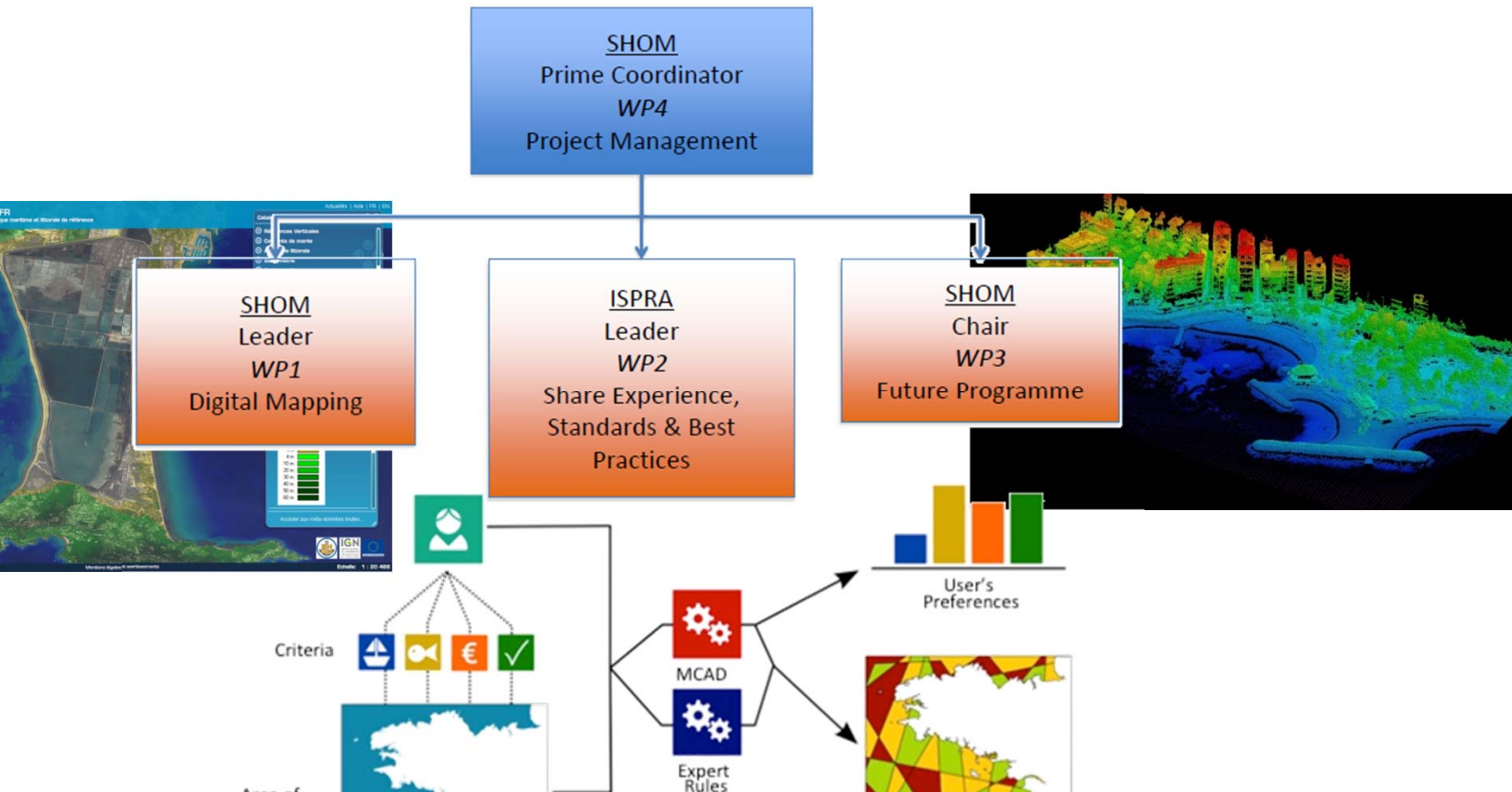
## Coastal Mapping Consortium

Task coordinator  
Tenderer





# Organisation







# WP1 : Digital Mapping

The screenshot displays the DATA.SHOM.FR web application interface. The main map shows a coastal area with various data layers. On the left, a workflow diagram is overlaid, showing the progression from SHOM Leader WP1 Digital Mapping to SHOM WP1.2 Inventory, Deployment & Data Initialization, and ISPRAs WP1.4 Training Activities, Forum. A 'Worldline' box on the far left lists WP1.1 Implementation, WP1.3 Maintenance & Administration, and WP1.2. The interface includes a navigation sidebar, a top header with the SHOM logo and 'DATA.SHOM.FR' title, and two main panels on the right: 'Catalogue' and 'Informations'. The 'Catalogue' panel lists various data layers like 'Références Verticales', 'Courants de marée', and 'Altimétrie littorale'. The 'Informations' panel shows a depth scale from -50 m to 60 m.

**Workflow Diagram:**

- SHOM Leader WP1 Digital Mapping** (orange box)
- SHOM WP1.2 Inventory, Deployment & Data Initialization** (green box)
- ISPRAs WP1.4 Training Activities, Forum** (green box)

**Worldline:**

- WP1.1 Implementation
- WP1.3 Maintenance & Administration
- WP1.2

**Application Interface:**

- Header: SHOM *L'océan à la carte* | DATA.SHOM.FR | Information géographique maritime et littorale de référence
- Navigation: Actualités | Aide | FR | EN
- Left Sidebar: Navigation, Affichage, Données
- Right Panels: Catalogue (Références Verticales, Courants de marée, Altimétrie littorale, Bathymétrie, Cartographie, Base de données maritimes et littorales), Informations (Depth scale: -50 m to 60 m)



## WP1 objectives :

Set up infrastructure enabling partners to prepare, update, disseminate self-produced data

- Technical & functional specifications for the portal and the warehouse and development (WP1.1)
- Inventory, deployment and data initialization (WP1.2)

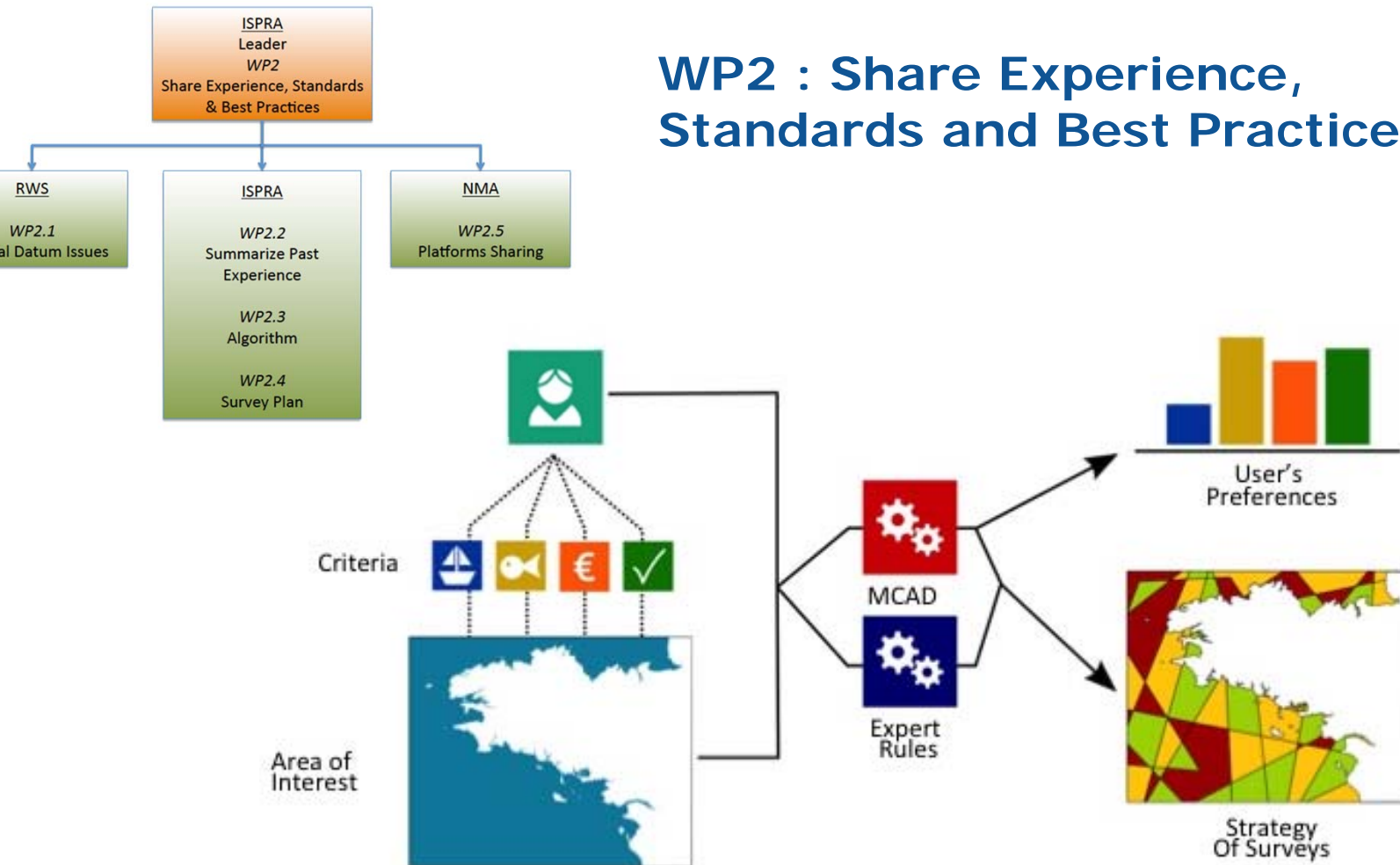
Maintenance and administration of the infrastructure

- To guarantee its availability (WP1.3)

Training activities (WP1.4)

- Warehouse system overview, basic principles of use

## WP2 : Share Experience, Standards and Best Practices





## WP2 objectives (1/2) :

Assess consistency of the existing vertical datum  
(WP2.1)

- Inventory of the used vertical references
- Inventory of available transformations and current developments (national projects)
- Analysis of INSPIRE requirements
- Analysis of differences between adjacent datasets
- Recommendation for a standard datum

Existing and summarizing of past experiences  
(WP2.2)

- Specific forms to the partners and major operators in marine surveys
- Feedback analyzed and summarized => report





## WP2 objectives (2/2):

Development of an algorithm to help the coastal survey planning at regional level (WP2.3)

- Based on fuzzy or decision tree logic
- Comparison of the results with current used methods
- Calibration of the algorithm

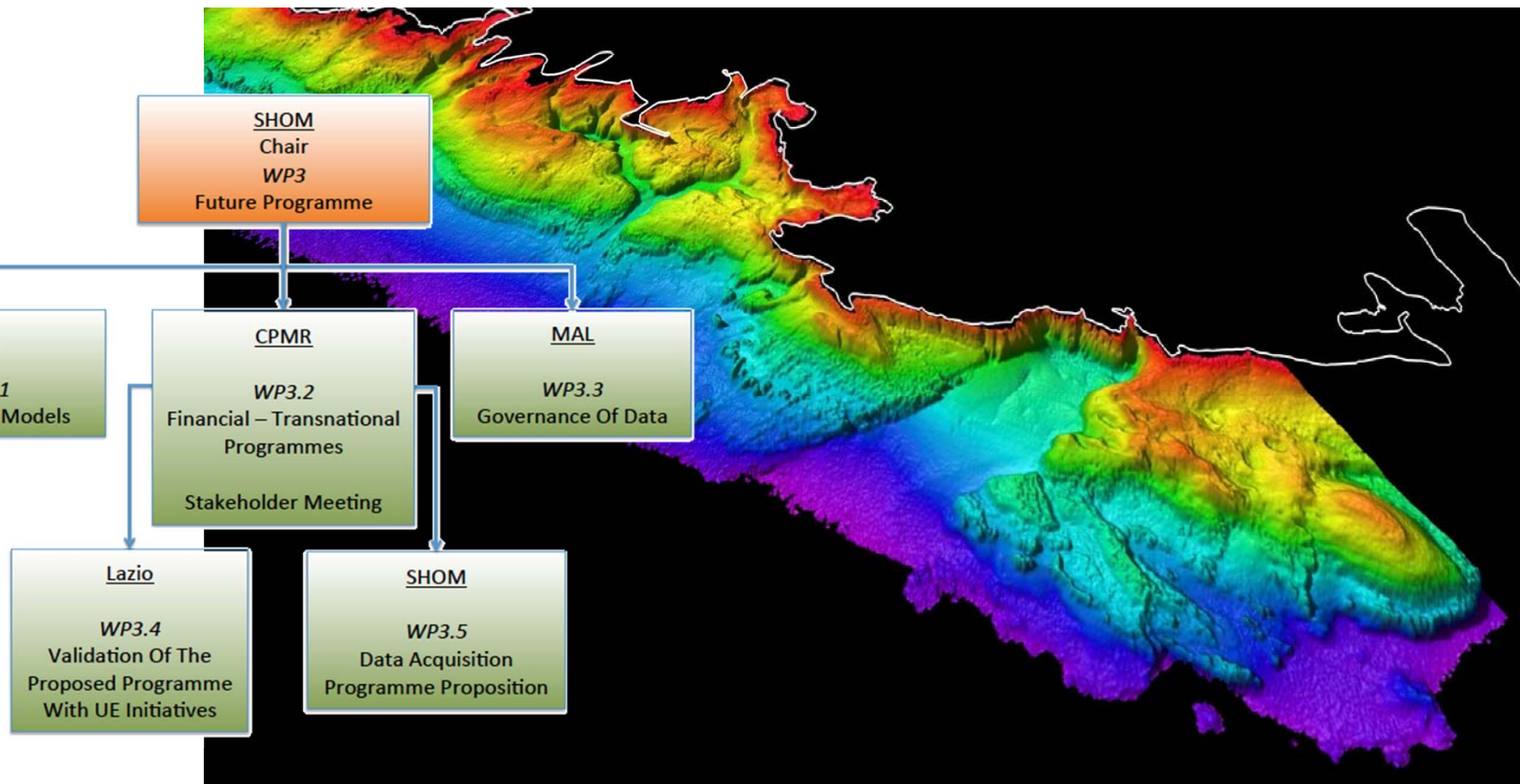
Build a technical and economical strategy (WP2.4)

- By refining the algorithm with cost analysis

Sharing platforms (WP2.5)

- Reduce cost and time by using additional sensors for a marginal cost

# WP3 : Future programme





## WP3 objectives (1/2):

Inventory of the current economic models  
(WP3.1)

- Specific form to get a picture of the current situation

Current EU fundings (WP3.2)

- Analysis of their ability to support data acquisition
- Case studies

Governance of bathymetric data management  
(WP3.3)

- Analysis within the partnerships (form)



## WP3 objectives (2/2):

### Validation of the proposed programme (WP3.4)

- Submission to the Bologna Charter coordination board  
*European regions charter for the promotion of strategic actions aimed at the protection and sustainable development of the Mediterranean coastal area*
- Outcomes incorporated in the strategy for a joint programme

### Data acquisition programme proposal (WP3.5)

- Multi-level strategy taking into account WP2 and WP3.1 to WP3.4
- To propose a Joint European Coastal Mapping Programme (JECMaP)



## Deliverables

Every 2 months : progress report

After 6 months : first version of portal on-line

After 9 months : interim report

After 18 months : final version of portal on-line +  
final report + executive summary of final report

After 20 months : stakeholder workshop

After 24 months : final report + executive summary of final report





## Meetings

Kick-off : 24th June 2015

Specification review (M3) : WP1 + WP2/3 –during  
EMODnet Jamboree (21-22/10/2015)

Portal (M5) : W49(Dec)/2015 – WP1

Algorithm (M7) : W05(Feb)/2016 – WP2/3 + WP1

Interim (M13) : W23(Jun)/2016 – WP2/WP3

Interim (M15) : M10/2016 – WP2/WP3

Final (M17) : M12/2016 – Brussels – All/directors

Stakeholder (M20) : 02/2017 – To be defined



**Thank you!**