

EMODnet Seabed Habitats: Overview of coastal data, data products and gaps

Helen Lillis – JNCC, UK

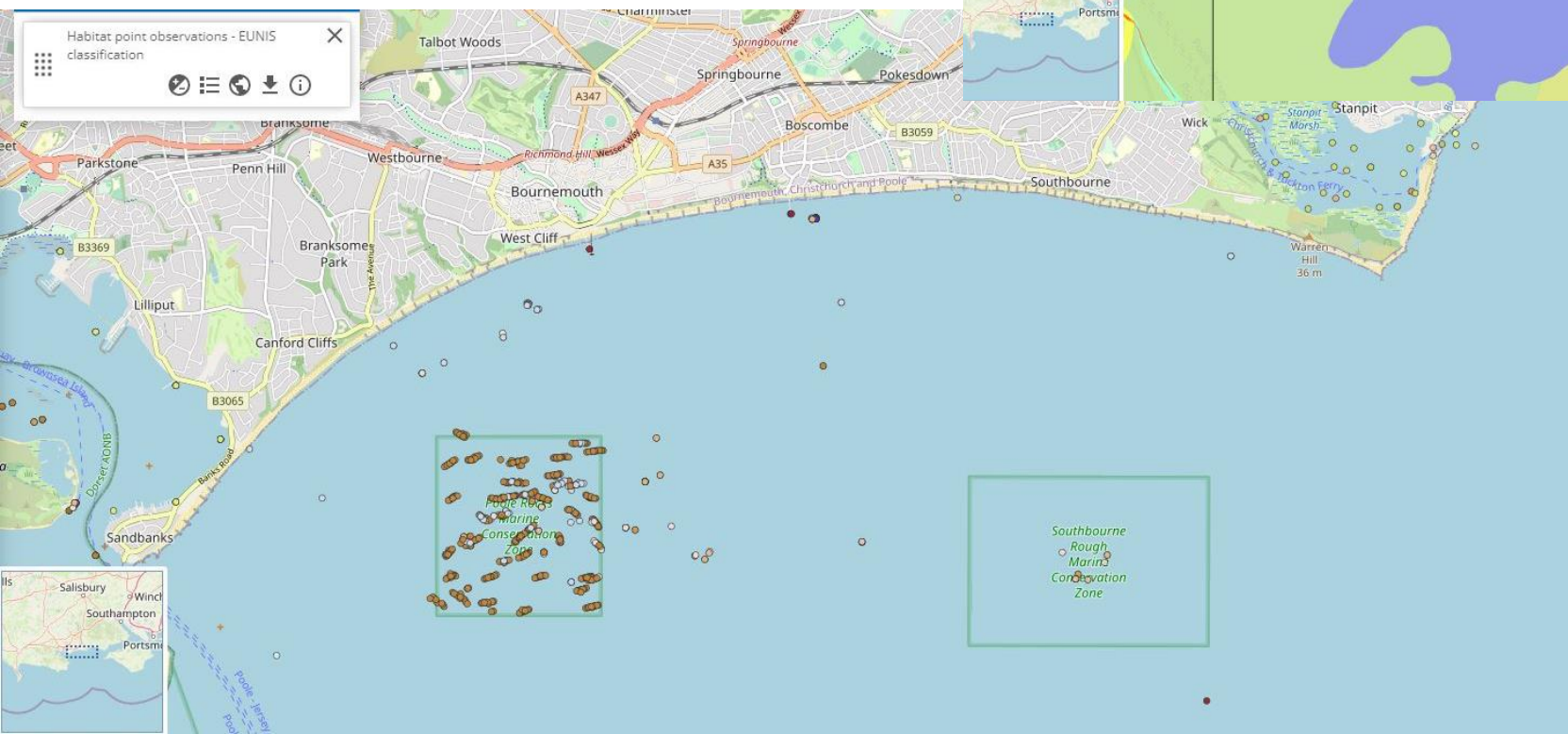
Helen.lillis@jncc.gov.uk

Seabed habitats: scope

- Until 2021, EMODnet Seabed Habitats has focussed on “marine habitats”:
 - Directly connected to the ocean
 - Includes everything from spring high tide mark downwards
 - Includes reduced and variable salinity waters
- From 2021, also includes “coastal habitats”:
 - Characterised by proximity to the sea but not permanently or tidally inundated
 - E.g. sand dunes, sea cliffs and beaches

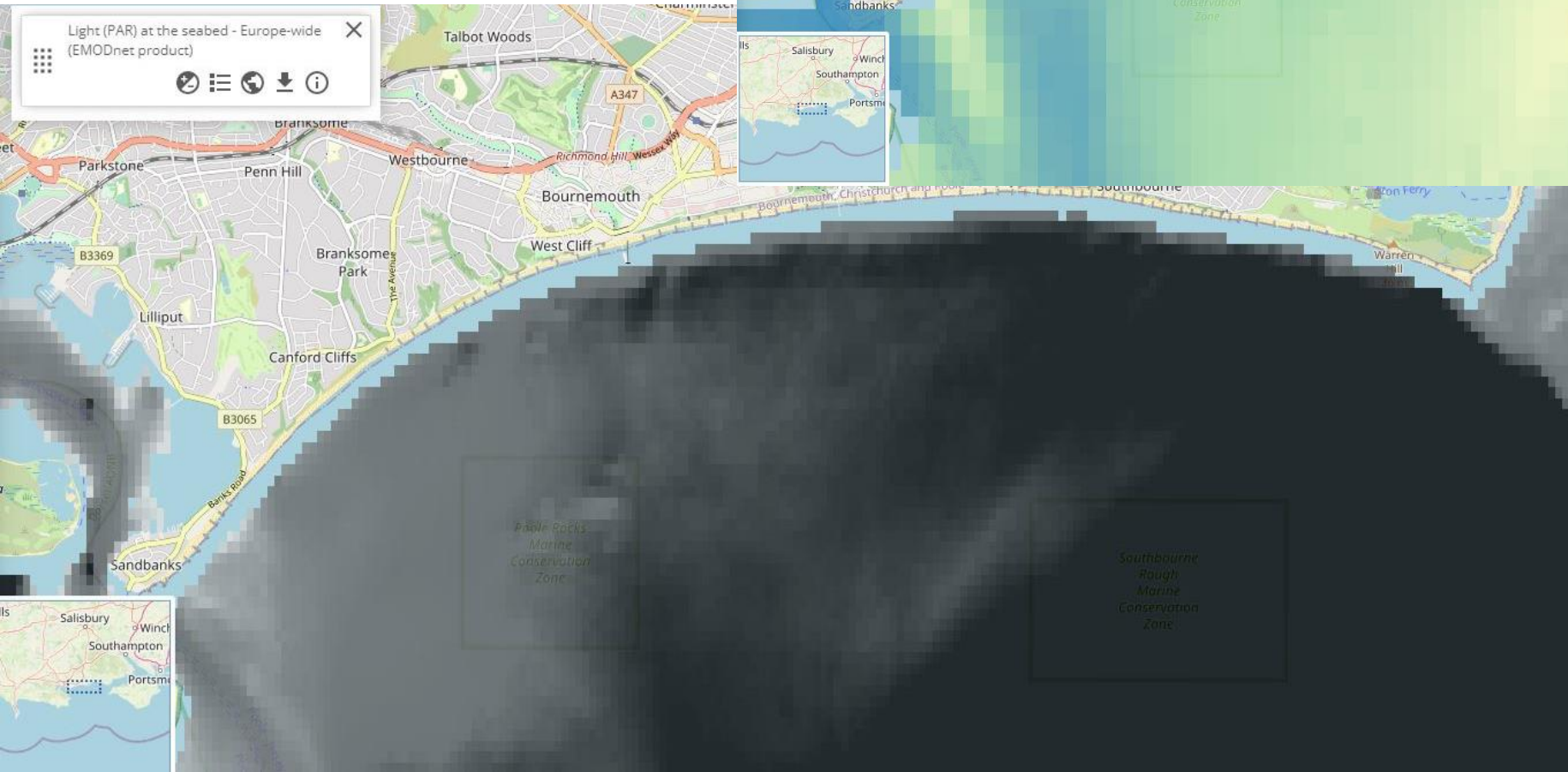
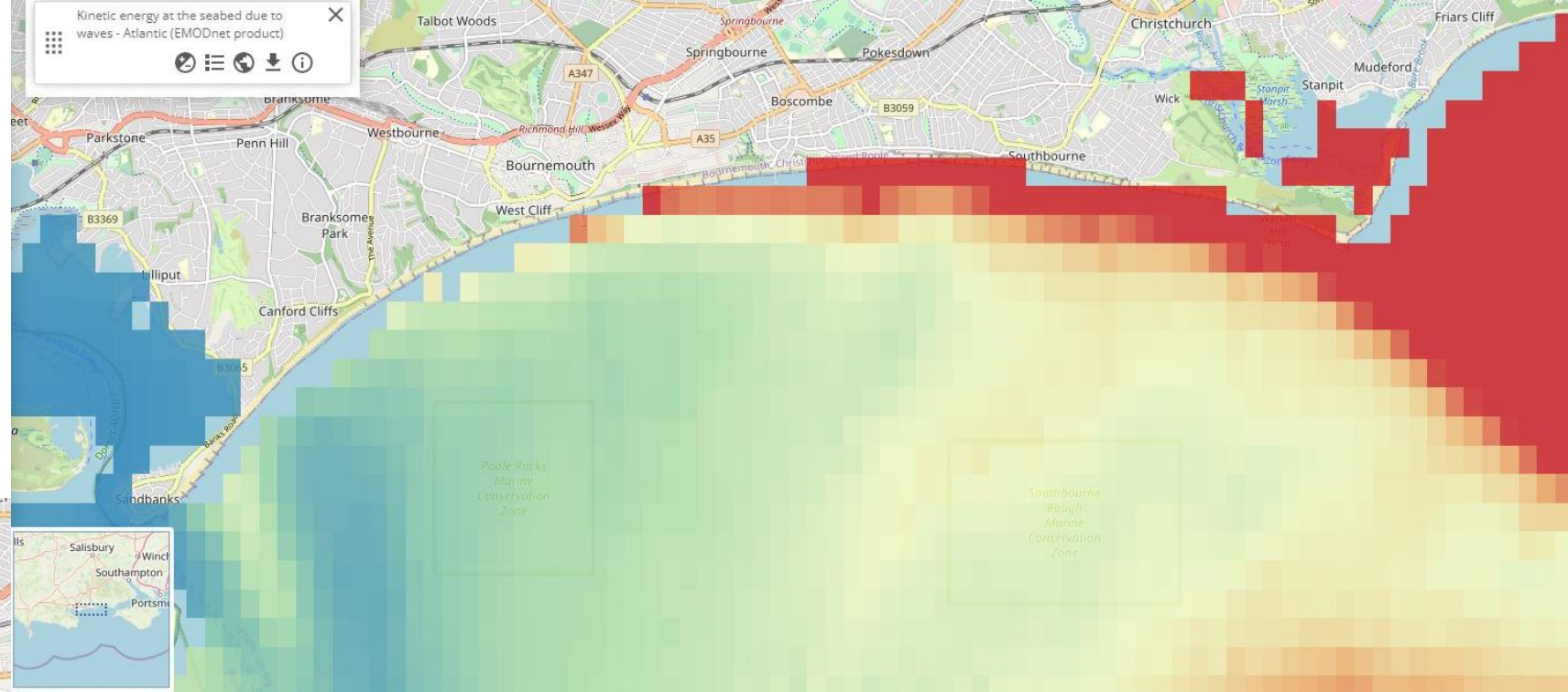
Examples of coastal data & products:

1. Standardised compilations of in situ observations and maps of seabed habitats



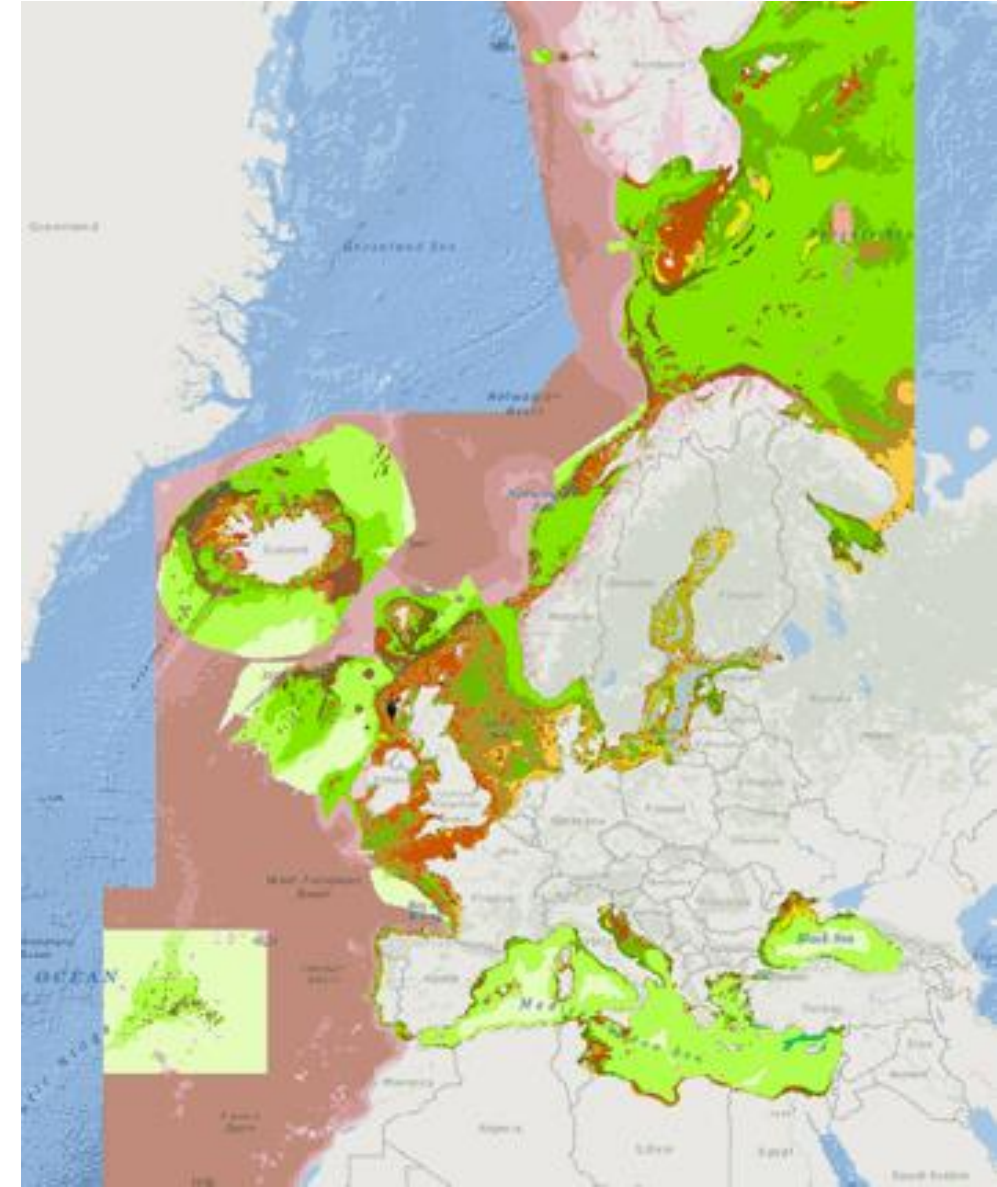
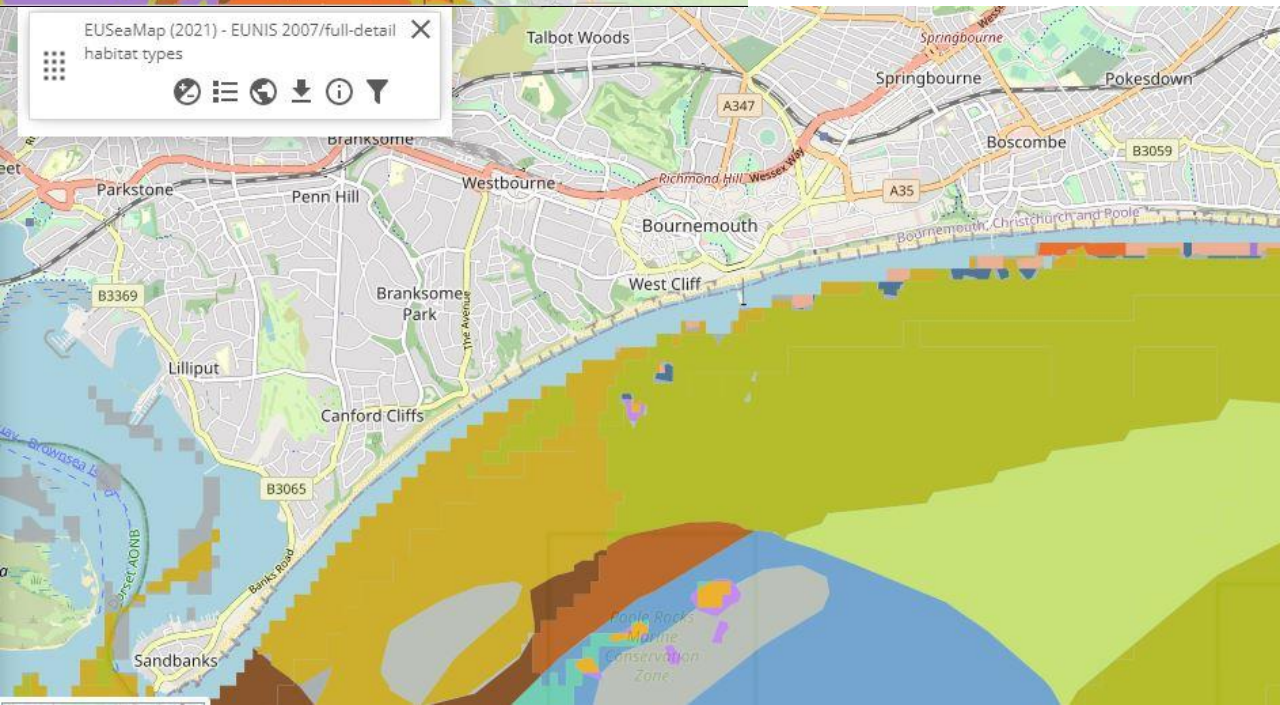
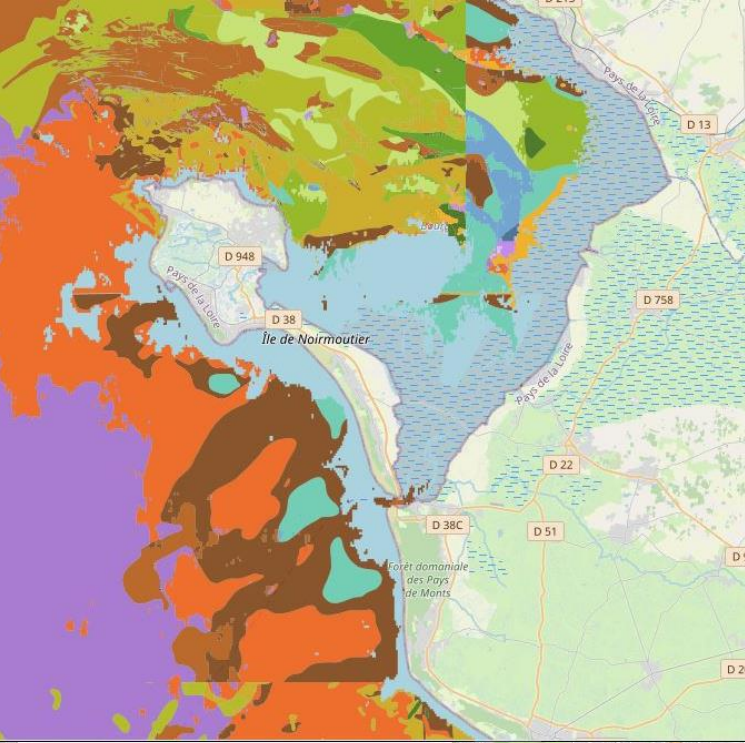
Examples of coastal data & products:

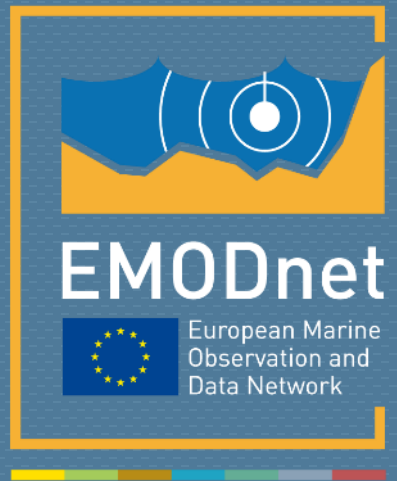
2. Coarse scale models of physical conditions at the seabed



Examples of coastal data & products:

3. EUSeaMap: the European broad-scale seabed habitat map





emodnet.ec.europa.eu

Your gateway to marine data in Europe





© European Union 2022

Unless otherwise noted the reuse of this presentation is authorised under the [CC BY 4.0](https://creativecommons.org/licenses/by/4.0/) license. For any use or reproduction of elements that are not owned by the EU, permission may need to be sought directly from the respective right holders.