



# EMODnet Ingestion progress

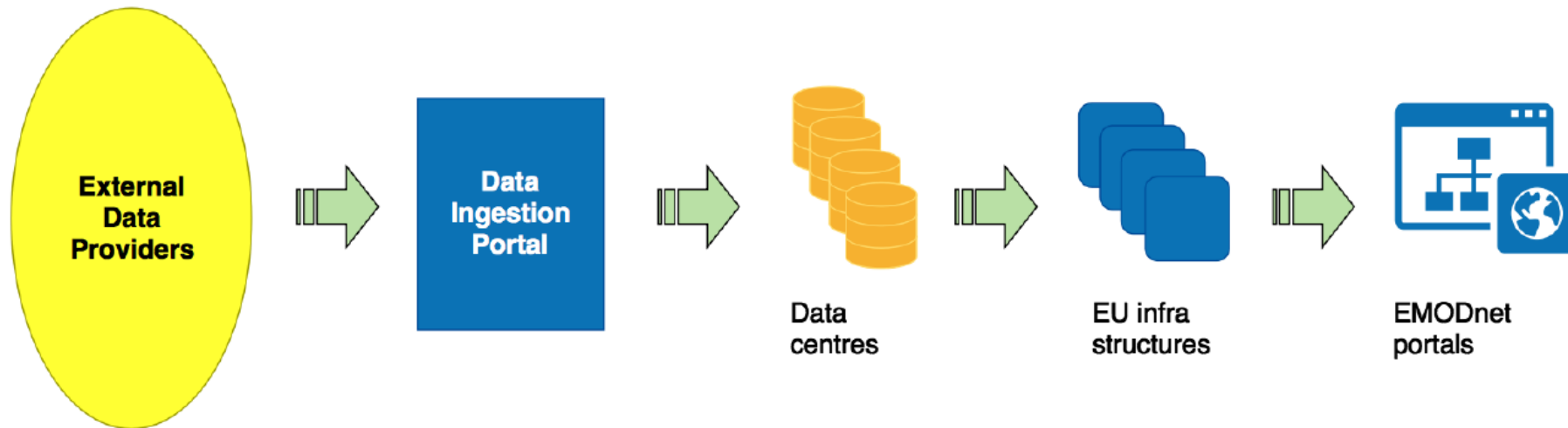
14th EMODnet Steering Committee Meeting  
Spring 2021  
19-20 April

Dick Schaap  
Sissy Iona

EMODnet Ingestion  
[www.emodnet-ingestion.eu](http://www.emodnet-ingestion.eu)

# EMODnet Thematic status update: November 2020 – April 2021

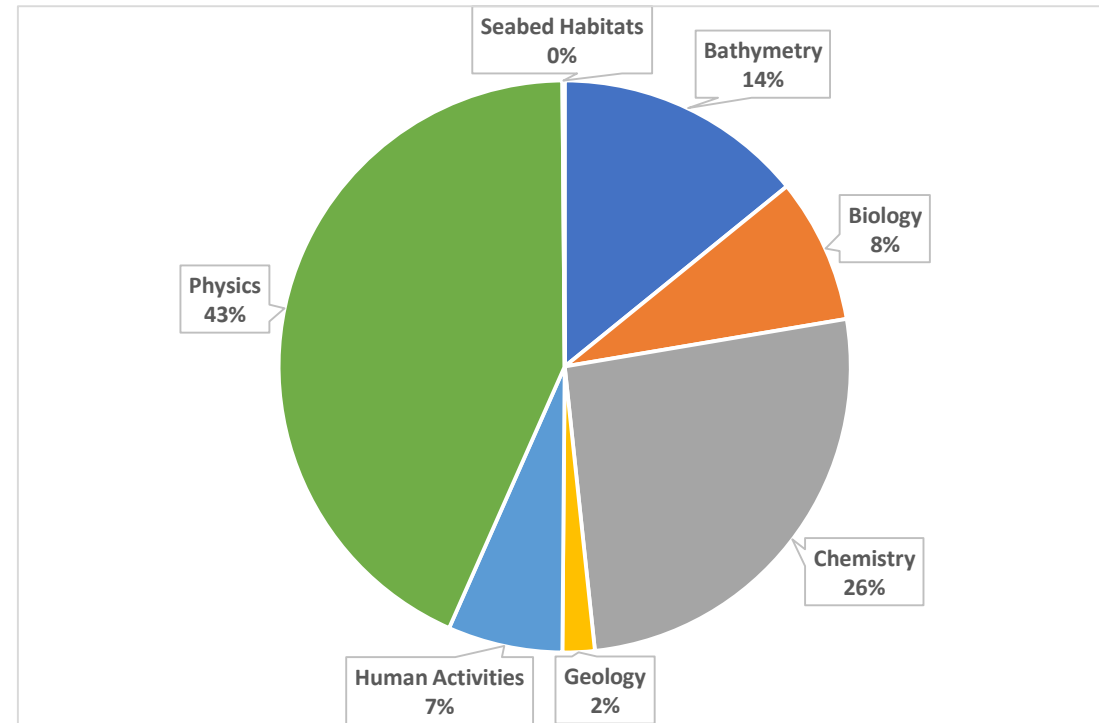
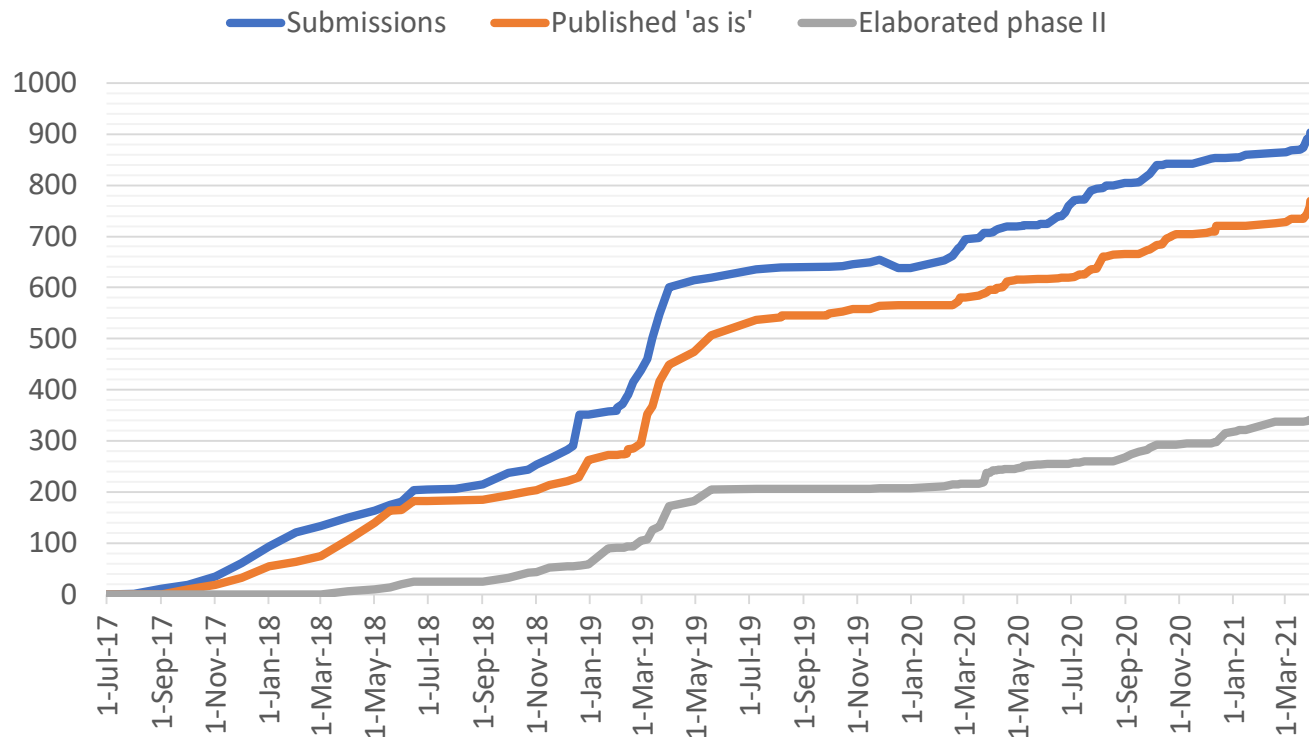
- To identify, encourage and support data holders (from public and private sectors) to become part of the mainstream processes of the EU data repositories.
- To launch and operate an **extra EMODnet portal** with services to facilitate data holders submitting marine data sets for publishing, further processing and safekeeping by expert data centres, and subsequent distribution through EMODnet thematic portals
- EMODnet Ingestion interacts with all EMODnet Thematics and all thematic coordinators are members of the consortium together with a network of data centres, experts in handling data from specific themes and data types



# EMODnet Thematic status update: November 2020 – April 2021

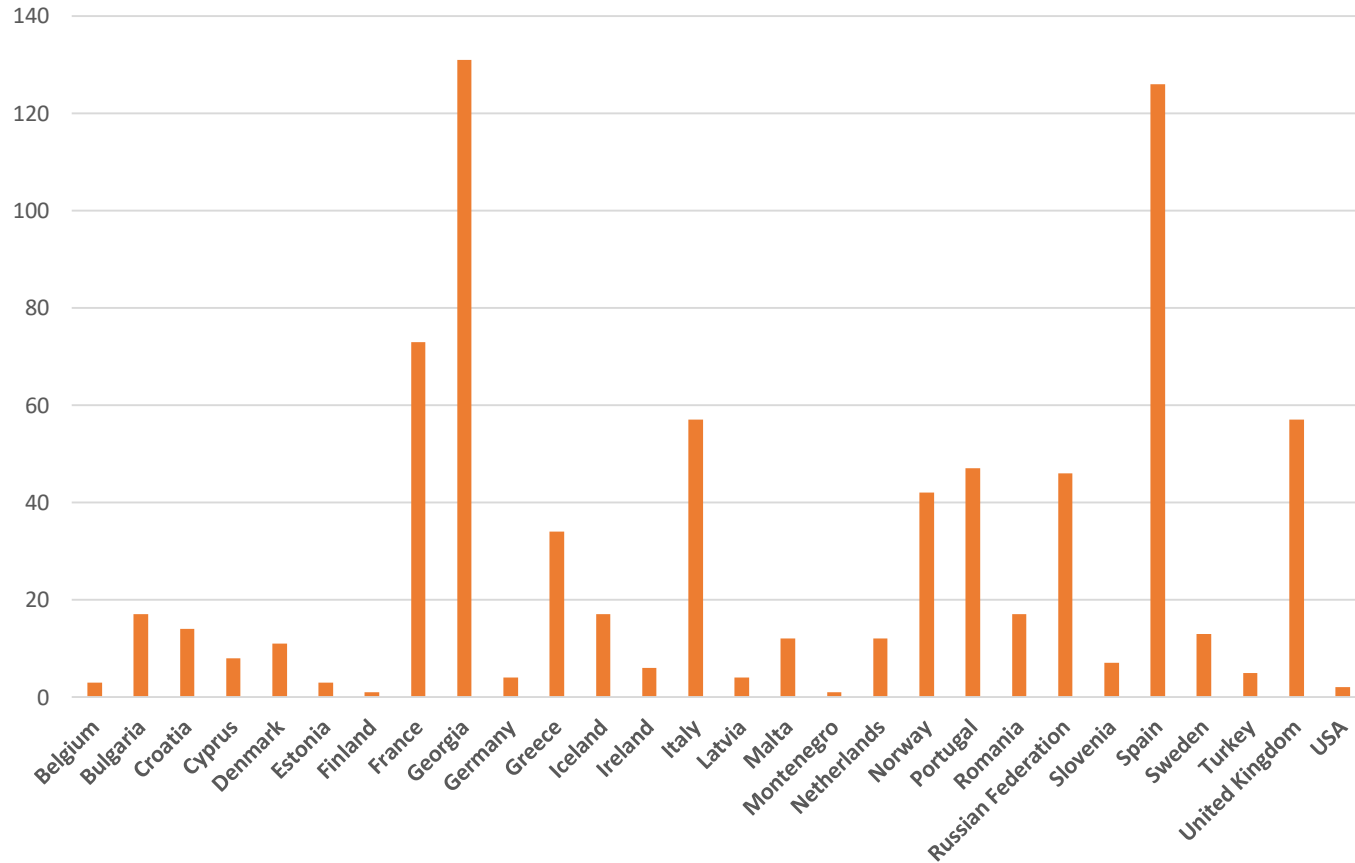
- Distinction between 2 phases in the life cycle of a data submission:
  - **Phase I:** from data submission to publishing 'as is'
  - **Phase II:** further elaboration and integration (of subsets) in national, European and EMODnet thematic portals.

Submissions and processing in time

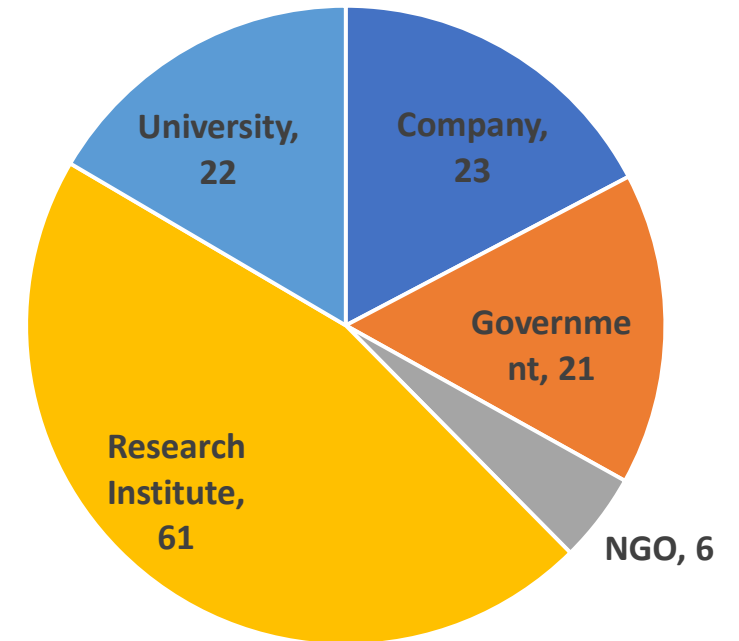


# EMODnet Thematic status update: November 2020 – April 2021

## Submissions per country – total 770



## Data originators by sector – total 133



# EMODnet Thematic status update: November 2020 – April 2021

Example:  
Marine Scotland  
Science cruises:  
Data now in  
EMODnet  
Chemistry

The screenshot displays the EMODnet Chemistry Data Ingestion Portal. The page features a search bar at the top right and a navigation menu on the left. The main content area shows search results for a query related to Marine Scotland Science cruises. The results are presented in a table with columns for Dataset name, Country originator, Start date, and Instrument / gear type. A map on the right side of the page shows the location of the cruises in the North Atlantic Ocean, with orange dots indicating the data points. The search filters on the left include 'Point of contact country: United Kingdom' and 'Data originator: Marine Scotland Science'. The 'SEA REGIONS' section is also visible, showing options for North Atlantic Ocean, Atlantic Ocean, and Northeast Atlantic Ocean.

**DATA INGESTION PORTAL**  
Wake up your data - set them free for Blue Society

**EMODnet**

**CHEMISTRY**  
Data & products on marine water quality  
CDI Data Discovery and Access Service - Extended search

Search

CONTACT US

ABOUT

Home

VIEW

NEW SEARCH | REFINED SEARCH | SEARCH RESULTS | SUMMARY | TIMESERIES

Filter search

You searched for: **Point of contact country: United Kingdom** **Data originator: Marine Scotland Science**

Found 13442 | Show (1 - 100) | First | Prev | Next | Last

Dataset name	Country originator	Start date	Instrument / gear type
SC15/09/638	United Kingdom	20091107	fluorometers   optical backscatter sensors   CTD   water temperature sensor   salinity sensor
SC15/09/639	United Kingdom	20091107	fluorometers   optical backscatter sensors   CTD   water temperature sensor   salinity sensor
SC15/09/640	United Kingdom	20091107	fluorometers   optical backscatter sensors   CTD   water temperature sensor   salinity sensor
SC15/09/641	United Kingdom	20091107	fluorometers   optical backscatter sensors   CTD   water temperature sensor   salinity sensor
SC15/09/642	United Kingdom	20091108	fluorometers   optical backscatter sensors   CTD   water temperature sensor   salinity sensor

Free search

Date search

Geographic search

SEA REGIONS

North Atlantic Ocean (13301)

Atlantic Ocean (13301)

Northeast Atlantic Ocean (40... (13301)

South

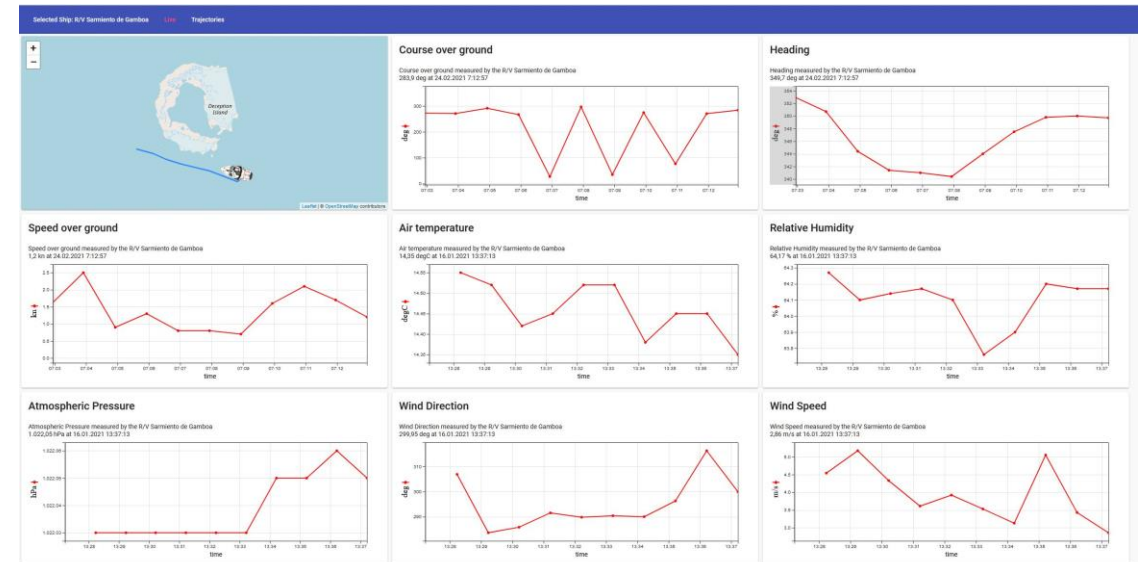
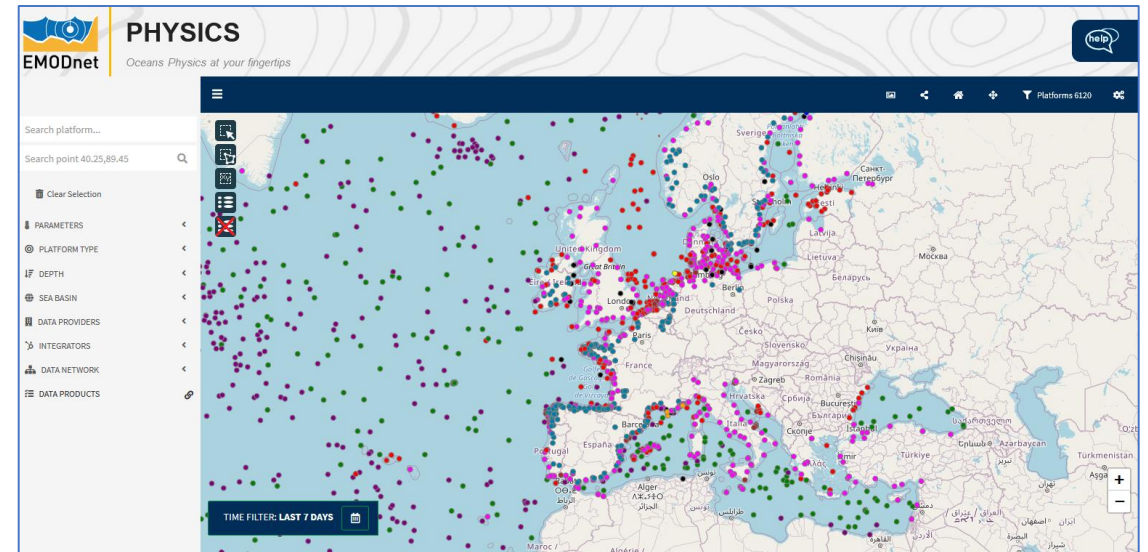
RESET SEND

CTD data from FRV Scotia 0217S cruise



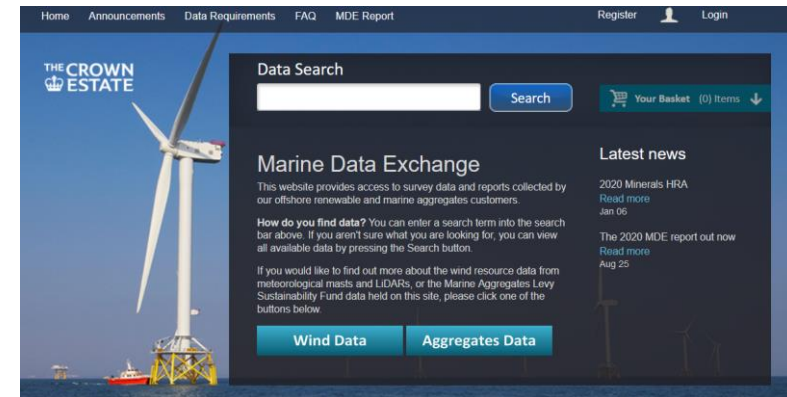
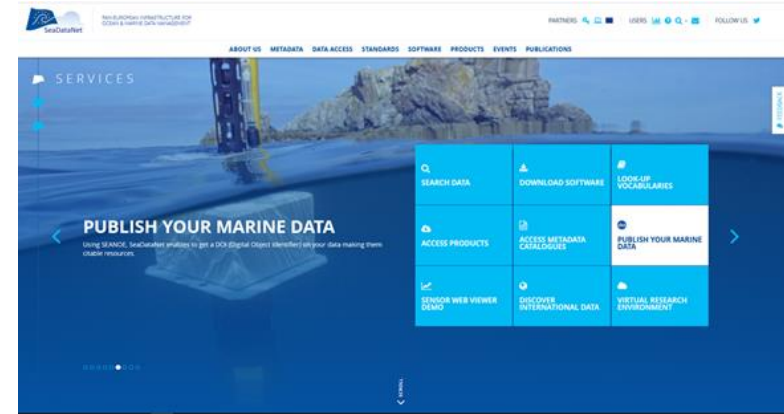
# Ingestion of operational data together with EMODnet Physics

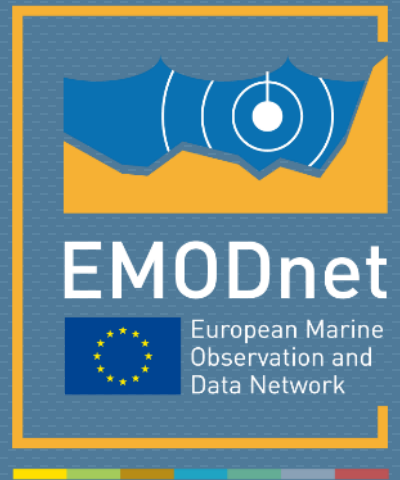
- **Connection of NRT data streams to the EU operational oceanography data exchange** managed by Copernicus CMEMS-INSTAC, EuroGoos, and SeaDataNet.
  - Identifying, encouraging, and supporting new operators and/or new stations to connect to the European ocean data exchange
  - Multiple sources connected (HFR sites, river stations, T-MEDNET and SailDrone, wave buoys, Fish vessel data), now available at EMODnet Physics
  - Long term archival at SeaDataNet through EMODnet Ingestion.
- **RT data exchange**
  - Use of SWE standards by several operators
  - >1500 sensors connected to the SWE demo at EMODnet Physics
  - Adoption of SWE by Eurofleets+ project for underway data streams from Research Vessels



# External interactions

- **Coupling with SeaDataNet/SEANOE data citing service:** **publish and get a DOI for your data !**
  - Dynamic exchange has been deployed
  - **>100 Seano** scientific data submissions are now in EMODnet
- **Coupling with the Crown Estate Marine Data Exchange (MDE)** is under development
- Recent contact with **Renewables Grid Initiative (RGI)**, who are interested in sharing data from windfarms etc and keen in adopting best practices in data management
- Further contacts for **Aquaculture sector** and **MSP** together with Human Activities





@EMODnet  
[www.emodnet.eu](http://www.emodnet.eu)

*Your gateway to marine data in Europe*

