

# Analysis of Caesium Sampling



**Colin Millar**  
European Commission  
Joint Research Center

# Outline

Data is provided by the Japanese Fisheries Agency

Description of the analysis

The data for prefectures around Fukushima:

Iwate, Miyagi, Fukushima, Ibaraki and Chiba.

Focus on the Fukushima prefecture data

Summary

# Fisheries Agency Data

<http://www.jfa.maff.go.jp/e/inspection/index.html>

The screenshot shows a web browser window displaying the Fisheries Agency's website. The page title is "水産庁/Results of the inspection on radioactivity level in fisheries products - Chromium". The URL in the address bar is "http://www.jfa.maff.go.jp/e/inspection/index.html". The page features the Fisheries Agency logo (FA) and the Japanese text "水産庁". A navigation menu includes "Top page", "Links", and "Japanese". A search bar is located on the right side of the page. The main content area is titled "Results of the inspection on radioactivity materials in fisheries products". Below this title, there is a paragraph of text explaining the inspection process and the scope of the results. The text mentions that inspections are conducted on a weekly basis to examine the possible contamination of fishery products released from the Fukushima Daiichi Nuclear Plant. It also lists various species of fish and shellfish that are inspected. The page is organized into sections, with the first section being "1. List of the inspection results". Under this section, there are two sub-sections: "Excel file" and "PDF file". Each sub-section contains a list of links to specific inspection reports, including the date of the report and the file size in KB.

水産庁/Results of the inspection on radioactivity level in fisheries products - Chromium

www.jfa.maff.go.jp/e/inspection/index.html

FA Fisheries Agency 水産庁

Top page Links Japanese Search

HOME > Results of the inspection on radioactivity level in fisheries products

### Results of the inspection on radioactivity materials in fisheries products

In accordance with the "Basic Policy for Inspections on Radioactive Materials in Fishery Products" and "Concepts of Inspection Planning and the Establishment and Cancellation of Items and Areas to which Restriction of Distribution and/or Consumption of Foods concerned Applies," the Fisheries Agency, in cooperation with the relevant prefectural governments and organizations, has conducted sampling and inspections of fishery products at the major fishing ports in Fukushima and adjacent prefectures on a weekly basis to examine the possible contamination of fishery products by radioactive materials released from the Fukushima Daiichi Nuclear Plant of Tokyo Electric Power Company.

Except for the test operations for giant pacific octopus, chesnut octopus, Japanese flying squid, spear squid, horsehair crab, whelks (*Buccinum isaotaki*, *Neprunea constricta*, *Neprunea intersculpta*, and *Beringius polyneumaticus*), and Thornhead there are no operations of any coastal and trawl fisheries in the sea area off Fukushima Prefecture currently. Inspections for the wide range of fish species will be continued, and the results will be announced in a prompt manner.

#### 1. List of the inspection results

##### Excel file

- Results of the inspection on radioactivity materials in fisheries products(9October,2012)(Excel:2,506KB)
- Results of the inspection on radioactivity materials in fisheries products (Press releaser in March,2011~March,2012)(Excel:1,764KB)

##### PDF file

- Results of the inspection on radioactivity materials in fisheries products (9October,2012) (PDF:394KB)
- Results of the inspection on radioactivity materials in fisheries products (July,2012~September,2012) (PDF:1,553KB)
- Results of the inspection on radioactivity materials in fisheries products (April,2012~June,2012) (PDF:1,631KB)
- Results of the inspection on radioactivity materials in fisheries products (January,2012~March,2012)(PDF:3,036KB)
- Results of the inspection on radioactivity materials in fisheries products (October,2011~December,2011)(PDF:3,128KB)
- Results of the inspection on radioactivity materials in fisheries products (March,2011~September,2011)(PDF:2,736KB)

# Caesium Sampling: Figure description

EU reference level

Black line

Compliant samples

Blue points

Non-compliant samples

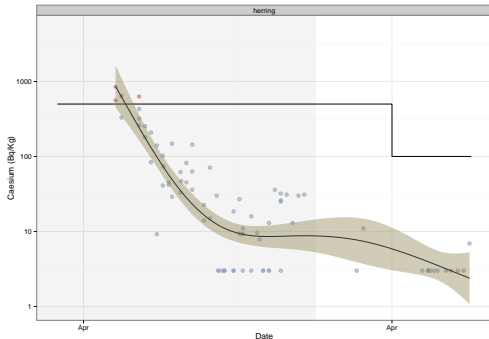
Red points

Trend (mean)

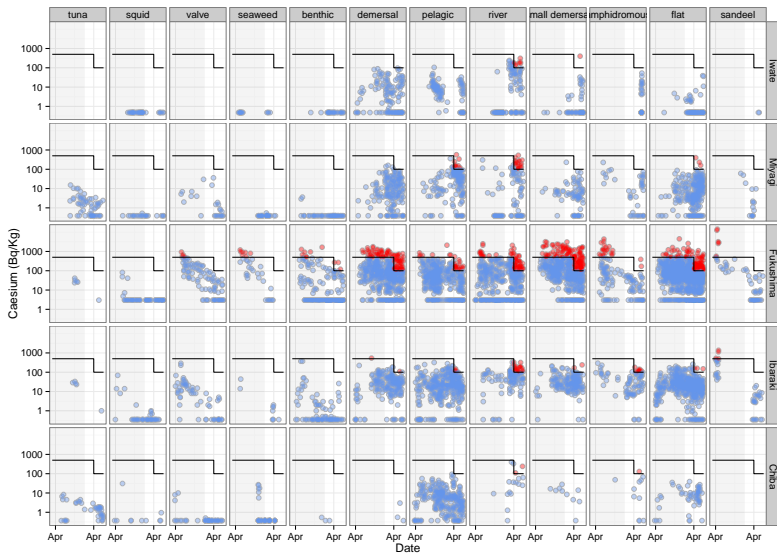
Blue line

Trend (confidence)

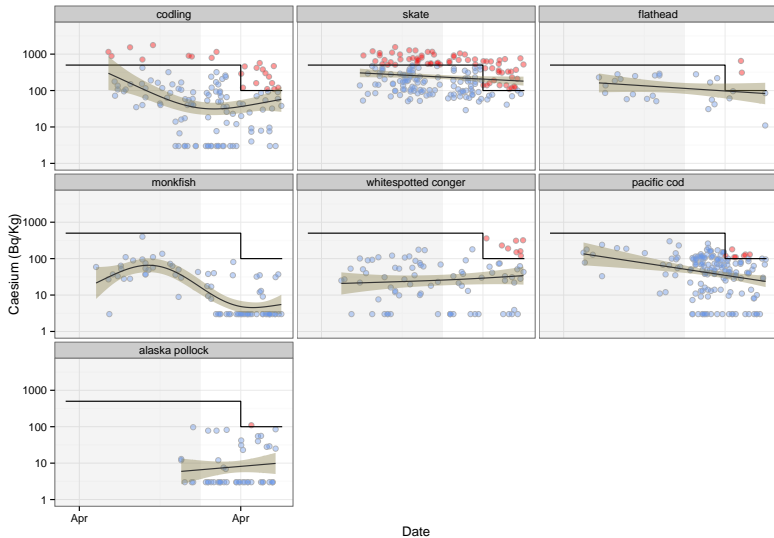
grey region



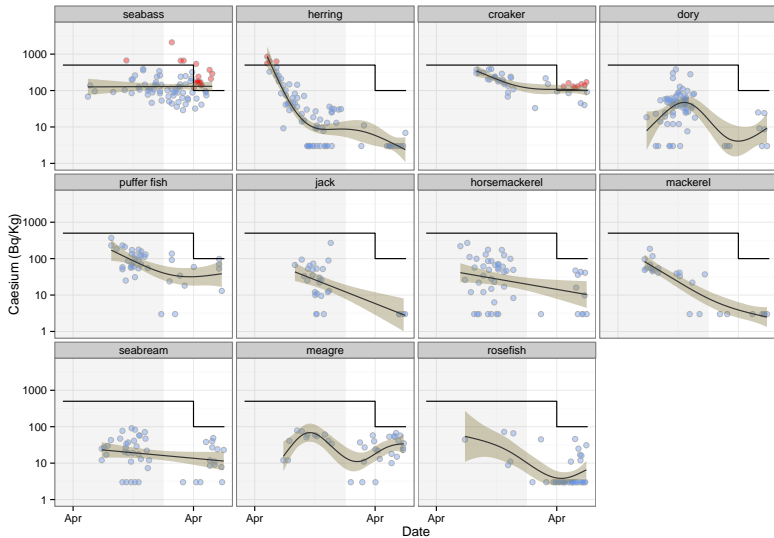
# Caesium Sampling: Iwate to Chiba



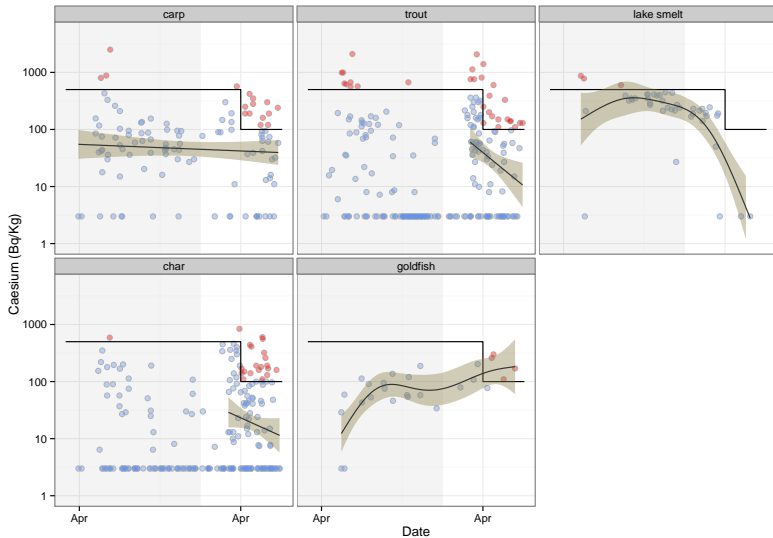
# Caesium Sampling: Fukushima, demersal



# Caesium Sampling: Fukushima, pelagic

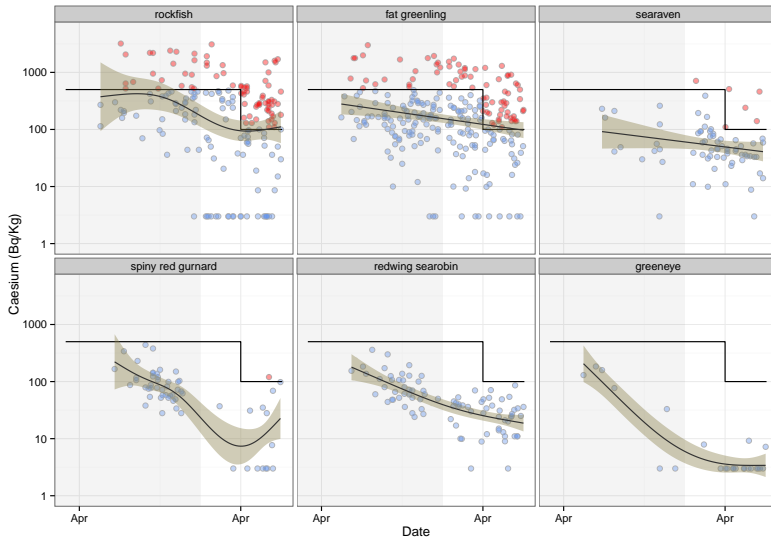


# Caesium Sampling: Fukushima, river

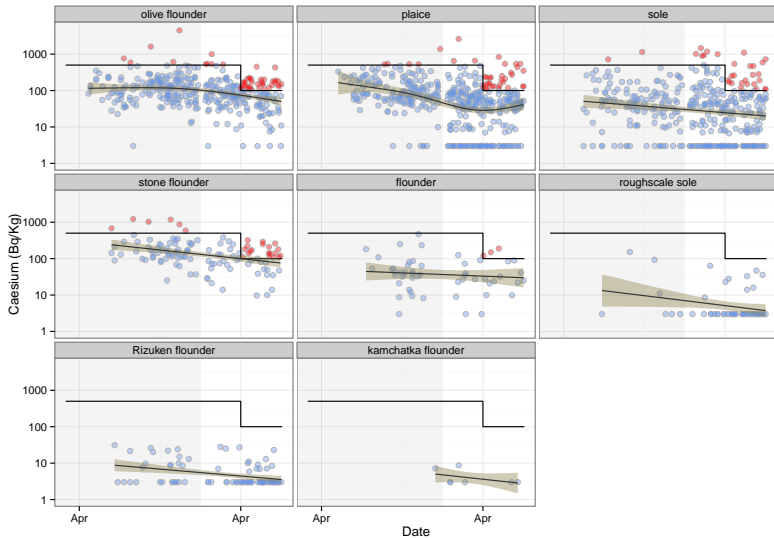




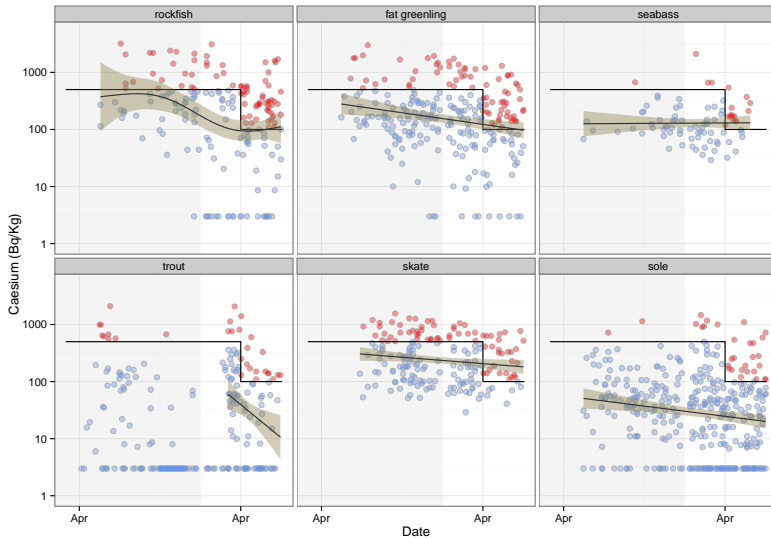
# Caesium Sampling: Fukushima, small demersal



# Caesium Sampling: Fukushima, flat

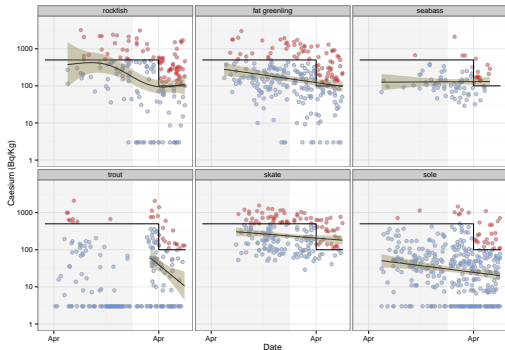


# Caesium Sampling: Fukushima, Summary



# Caesium Sampling: Fukushima, Summary

- Bottom dwellers
  - rockfish
  - skate
  - sole
- Coastal
  - fat greenling
  - seabass
- River
  - trout



# Summary

Data from the Fukushima prefecture was focused on to identify species groups that had a higher risk of non-compliance.

- Certain types of fish present a higher risk of being non-compliant:
  - bottom dwellers
  - coastal
  - river
- Most species outside of Fukushima prefecture are compliant
- All fisheries targeting non-compliant species have been suspended. These species are not distributed to markets.
- No tuna samples found  $> 100$  Bq/kg
- No evidence of accumulation (stable or declining trends)