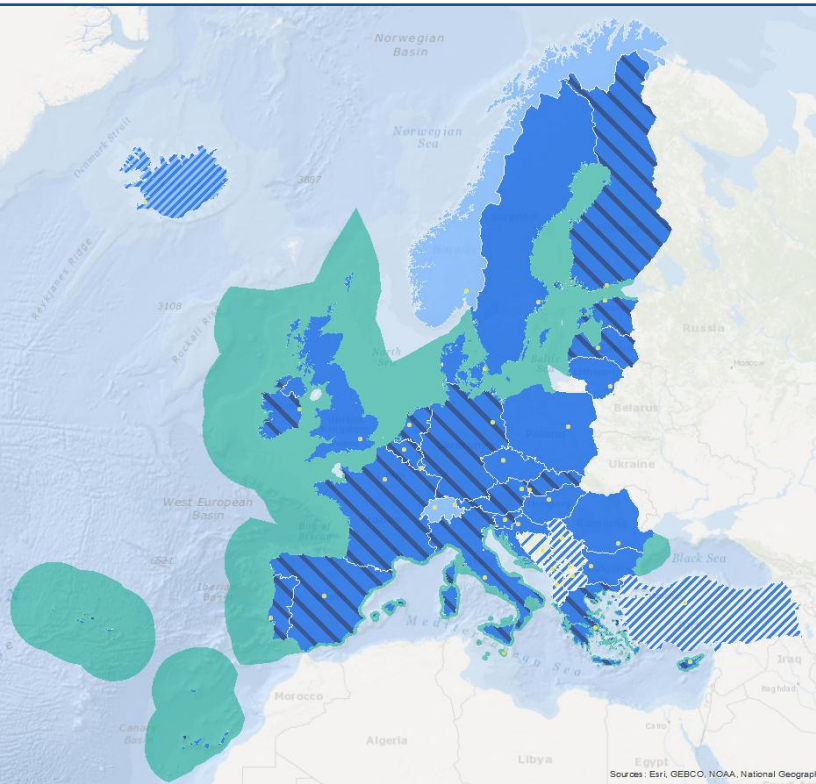


European Atlas of the Seas



Anne-France Woestyn
DG MARE.C1
October 2014

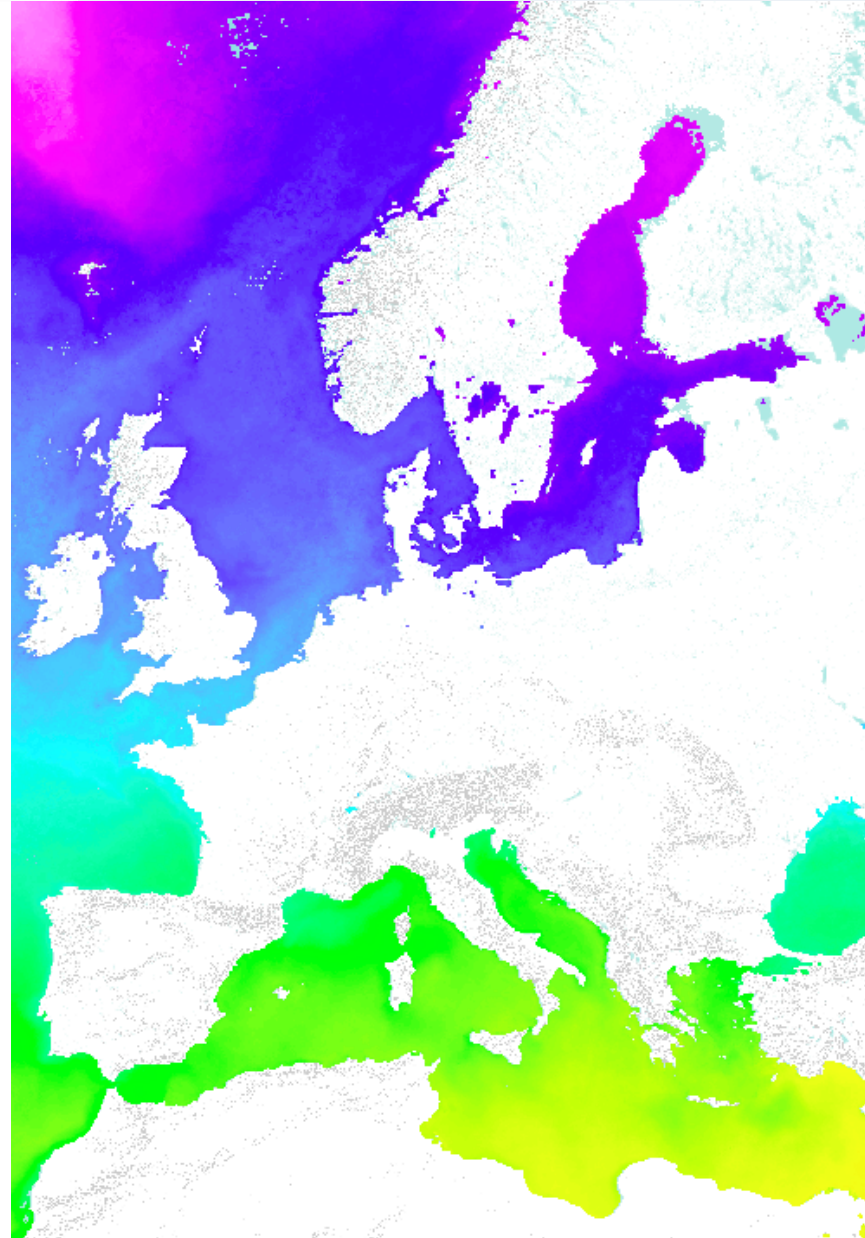
EU Atlas of the Seas

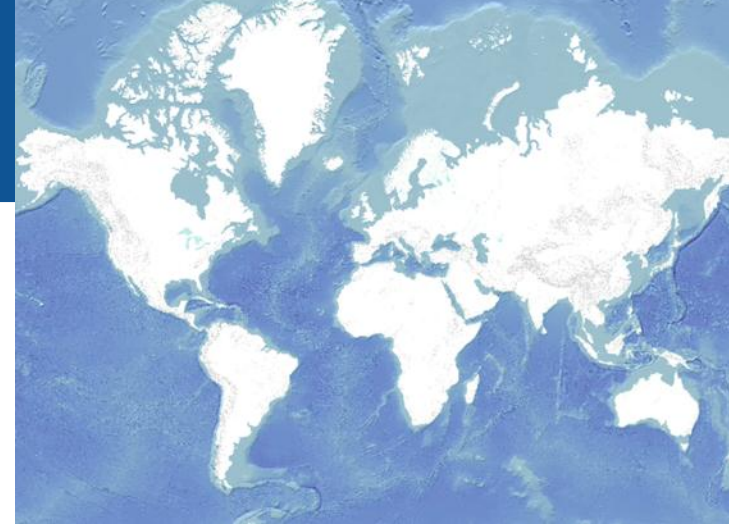
Audience:

Policy makers and professionals
Interested public

Main features:

Geographical visualisation
Meta data, date, source, link, ...
Make image ('print/export')
Download data (SHP)
Historical evolution
Map superposition





New atlas on-line!

*European Commission – DG MARE website:
<http://ec.europa.eu/maritimeaffairs/atlas/>*

New:

Simple mode: precooked maps

Advanced mode: make your own maps

Map content selection and superposition

Arctic projection and content

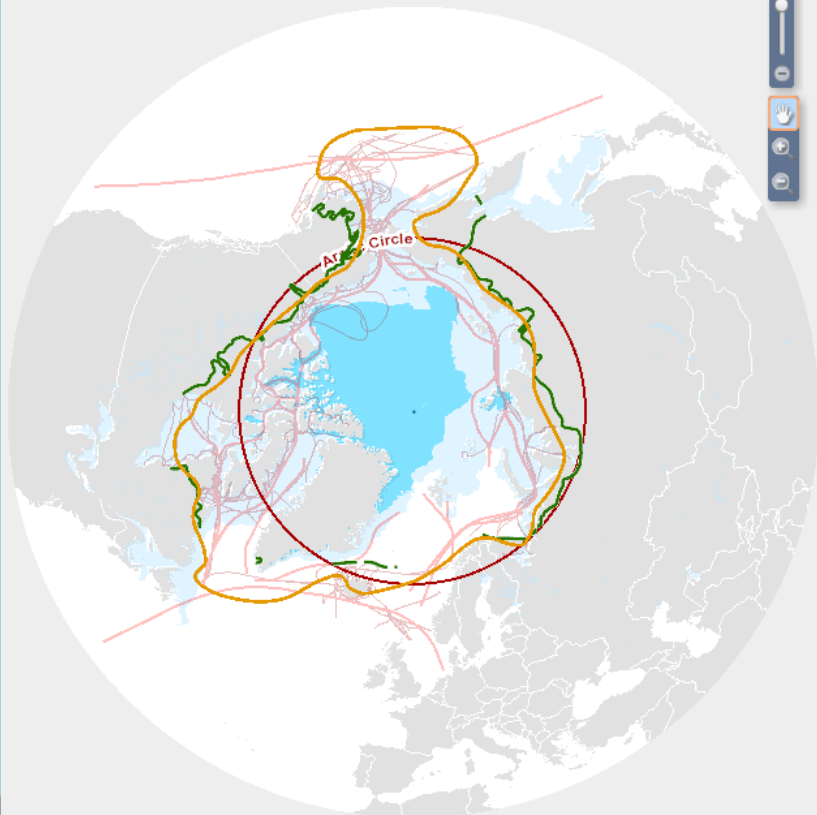
New and updated content



Simple mode

- Security
- Sea level rise
- Sea bottom
- Fisheries
- Fish consumption
- Arctic

Make your own map



Map navigation controls: zoom in (+), zoom out (-), home (house icon), and a hand icon for panning.

Arctic

This map shows the Arctic ocean.

The various lines generally used to define the Arctic area are represented: The Arctic circle, the tree line and the 10°C isotherm of July. The ice floe extension and main Arctic maritime routes are also shown.

Legend

- 10°C isotherm in July**
 - 10°C isotherm in July
- Tree line**
 - Tree line
- Arctic circle**
 - Arctic circle
- Maritime routes**
 - Main maritime route
 - Other maritime route
- Ice floe**
 - 21st September 2013
 - 21st March 2014

Advanced mode

European Atlas of the Seas | Simple mode | World projection | Help | About | Feedback

European Commission

Map layers

Search for a layer

- Arctic region
 - Arctic circle
 - Countries
 - Limits of oceans and seas
 - Ice floe
 - Maritime routes
 - Fishing zones (FAO)
 - International conventions
 - Marine protected areas
 - Tree line

Displayed layers

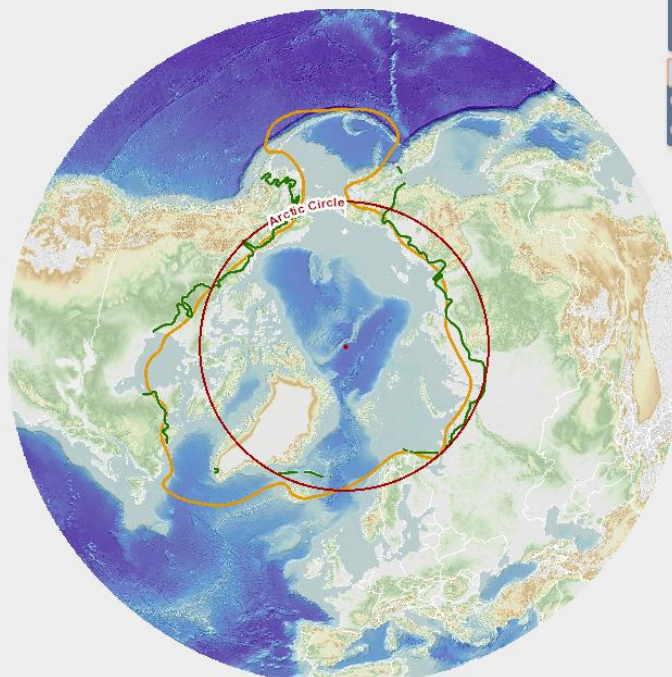
- Arctic circle
Opacity: 0 — 100
- Tree line
Opacity: 0 — 100
- 10°C isotherm in July
Opacity: 0 — 100

Background

- ATLANTIC OCEAN
- Show meridians and parallels

Legend

- Arctic circle
- Tree line
- 10°C isotherm in July



5000 km

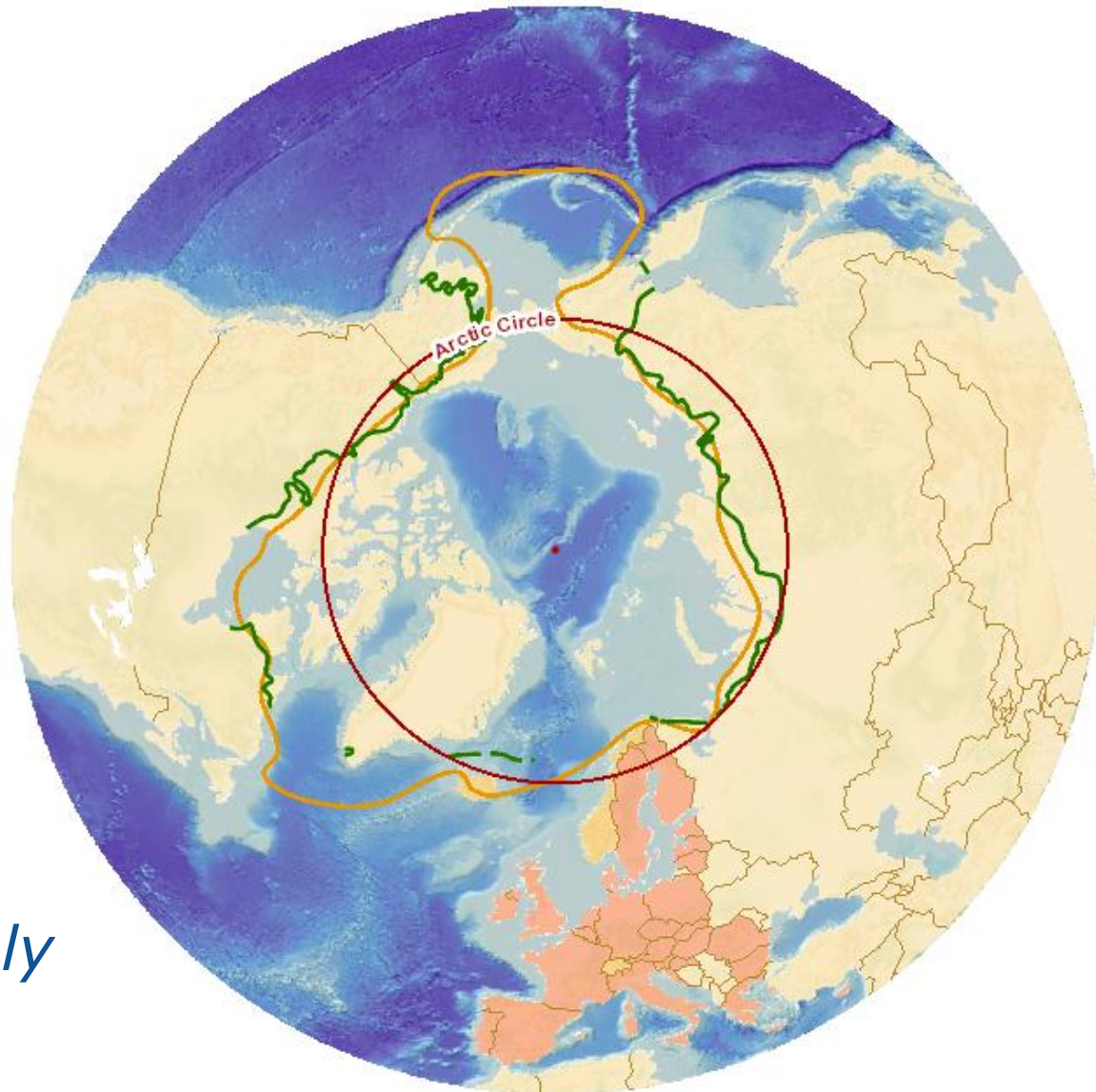


Arctic content

Arctic circle

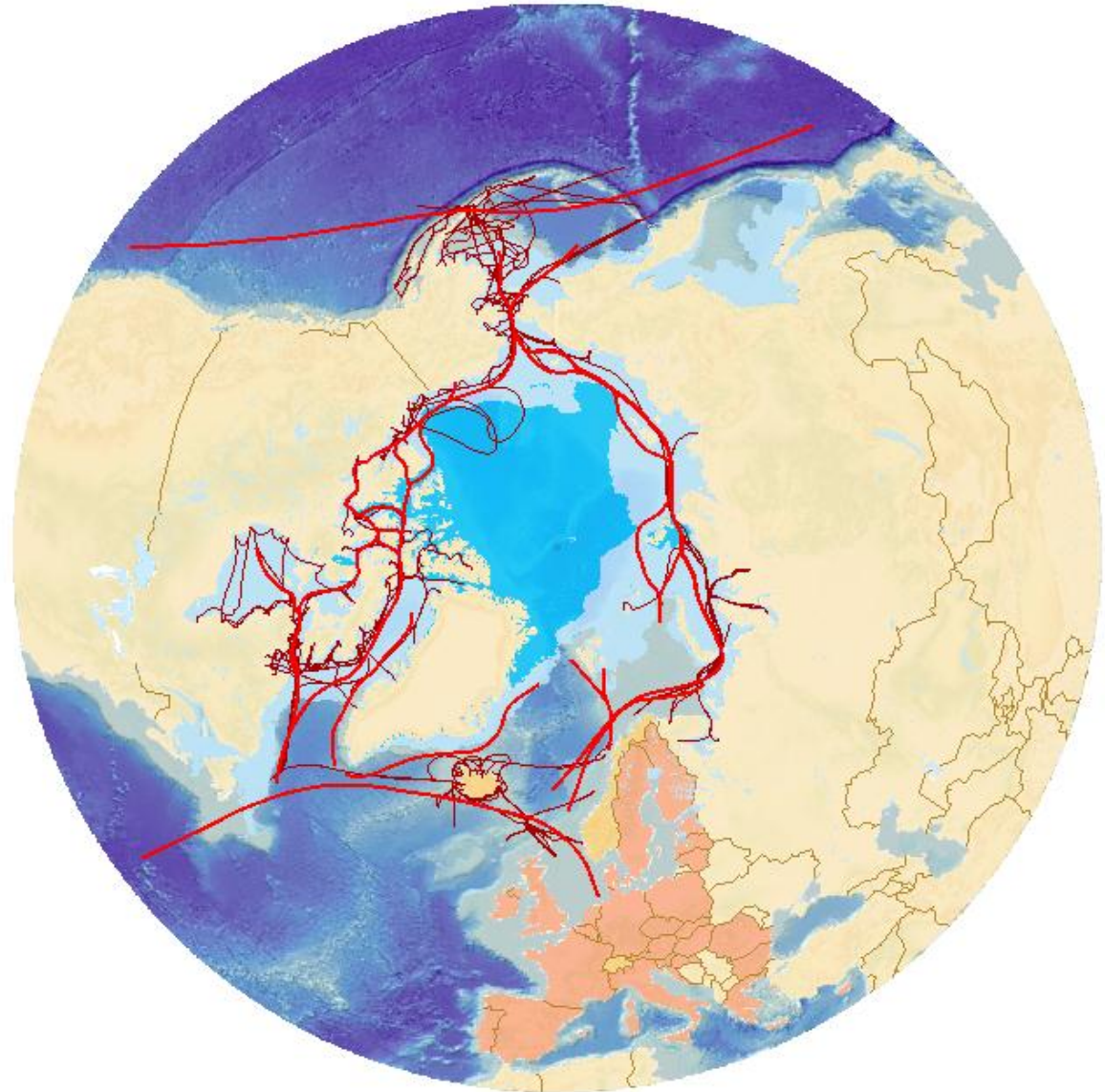
Tree line

10°C isotherm in July





Arctic content



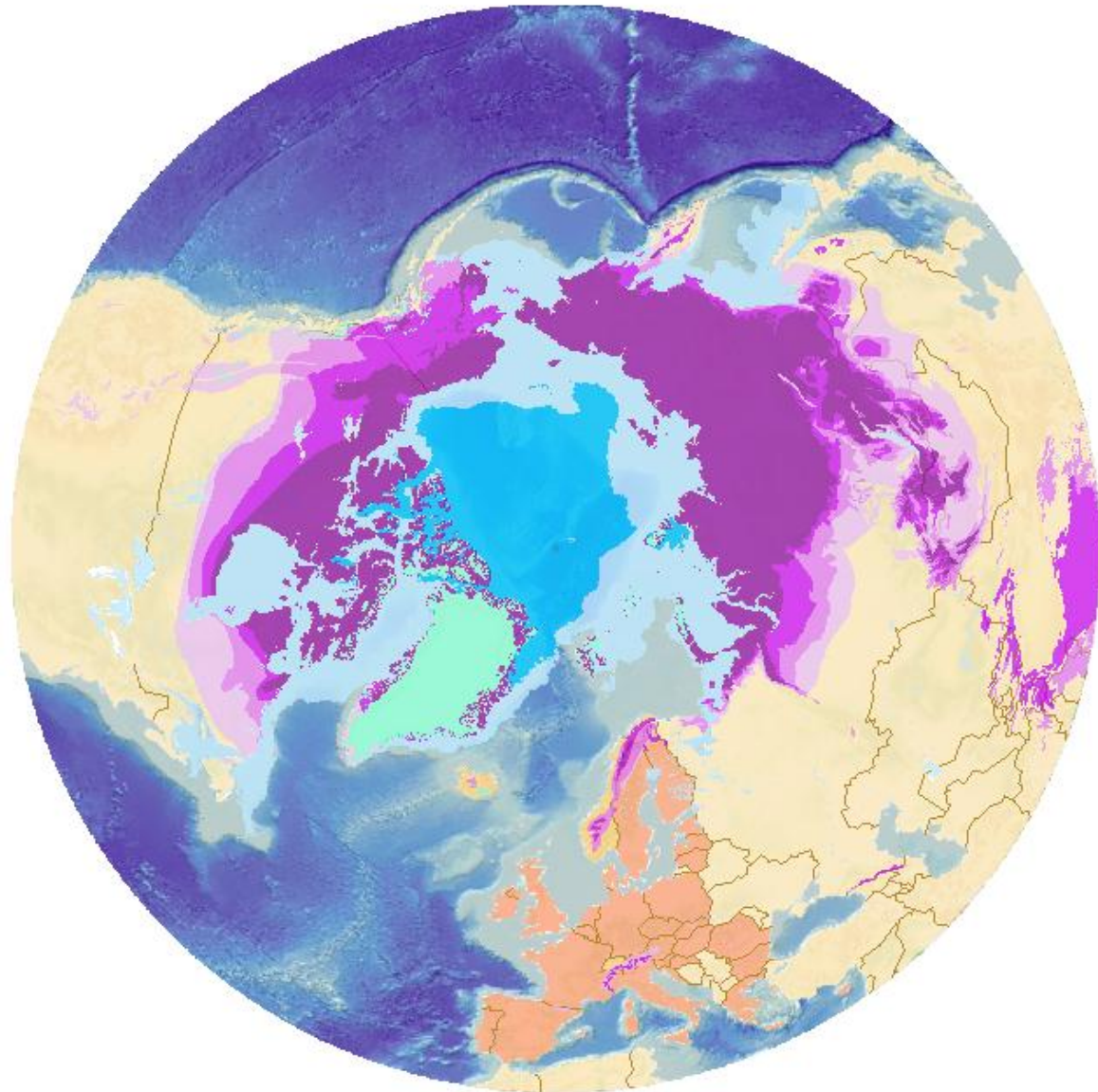
Maritime routes



Arctic content

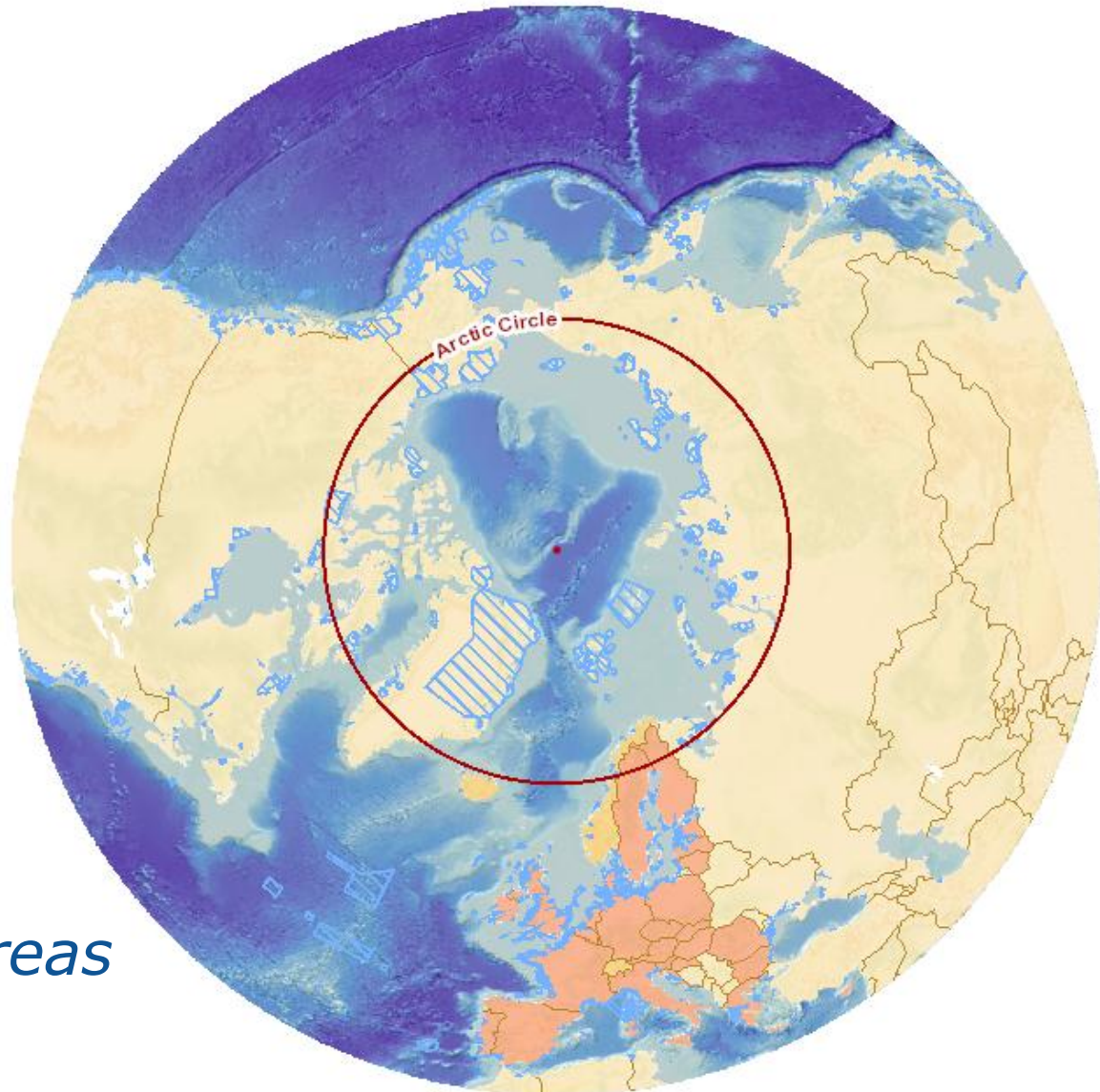
Permafrost

Ice floe





Arctic content



Marine protected areas

Also

Ocean and seas

Countries

FAO fishing zones

International conventions

Chlorophyll concentration



Thanks for your attention!

<http://ec.europa.eu/maritimeaffairs/atlas/>

Contact:

DG MARE.C1

Anne-France Woestyn

Mail: anne-france.woestyn@ec.europa.eu

Tel: +32 2 299 85 56

