

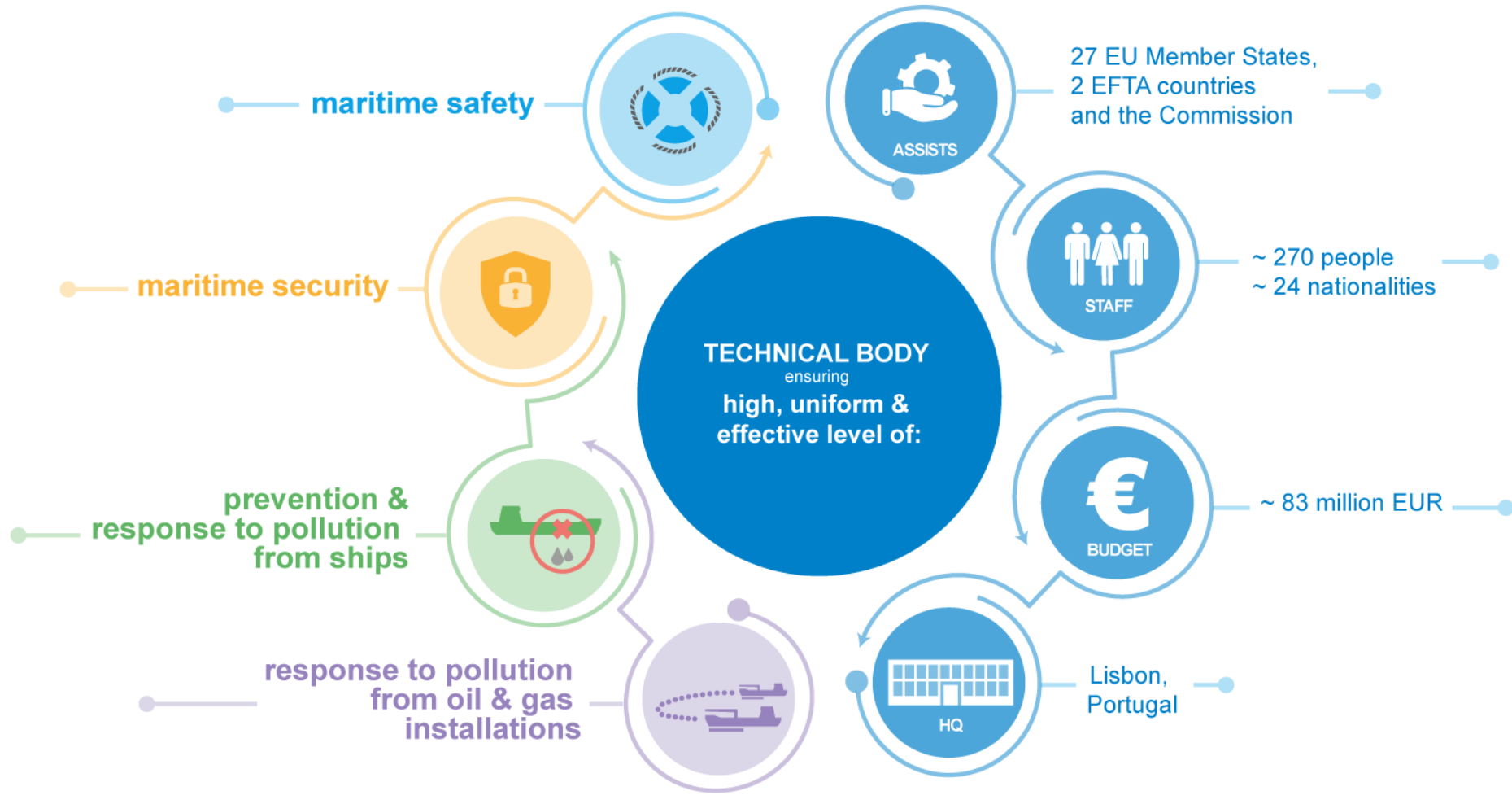


European Maritime Transport Environmental Report

Samy Djavidnia

Lisbon, 6 May 2022

EC – IHO Meeting







90%

of world trade
is moved by sea



77%

of EU international

35%

intracommunity trade



17.6%

world fleet
EU MS-flagged

36.4%

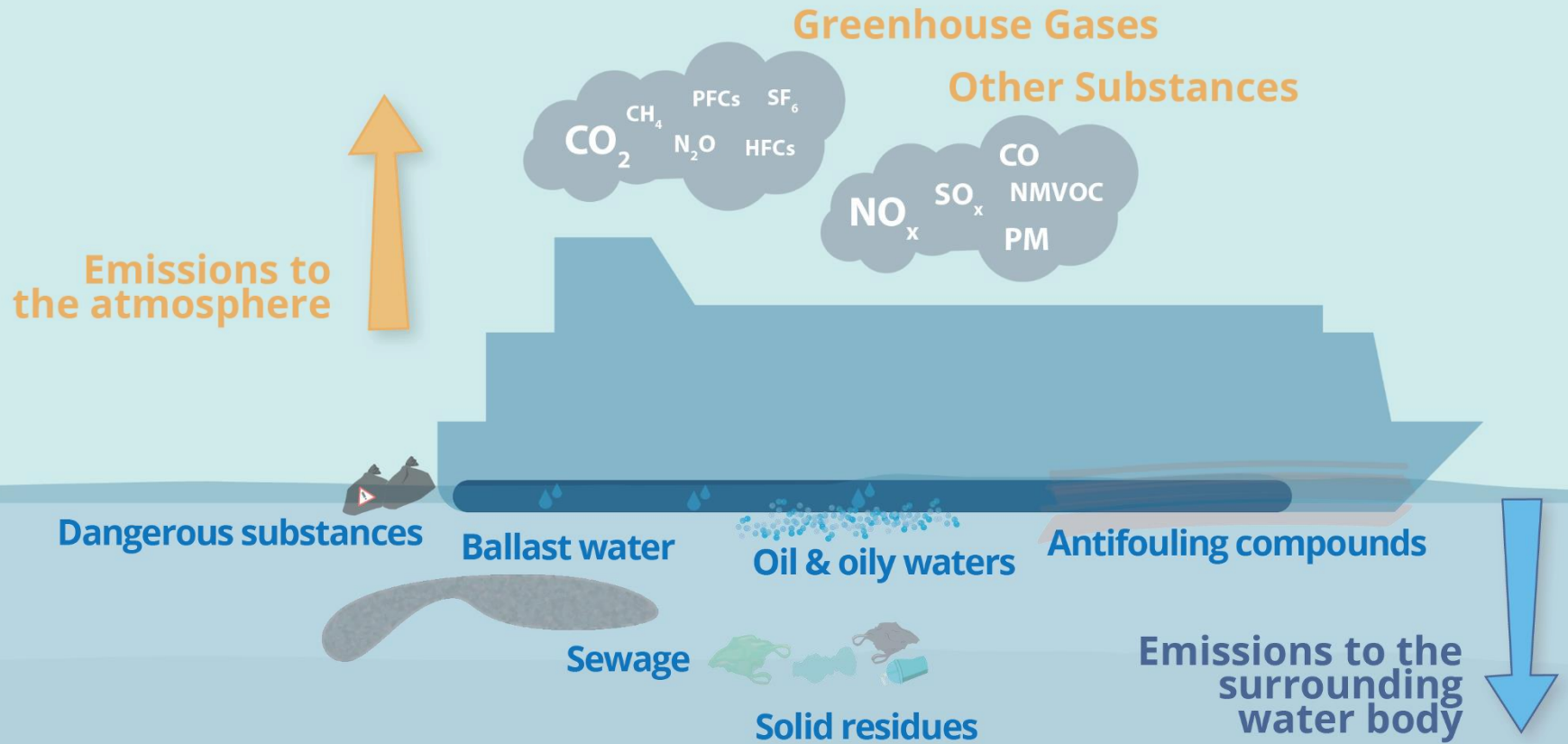
world fleet owned by
persons/businesses
domiciled in the EU



Maritime sector
employed

1 million

Environmental aspects of maritime transport





144.2
million
tonnes



13.5%
of total EU
Greenhouse Gas
emissions
from transport



3%
of total global
CO₂ emissions

Maritime transport and air pollution

16%
global SO_2

1.63 million tonnes SO_2

emissions from
international shipping in 2019

22%
global NO_2

4.46 million tonnes NO_2

emissions from
international shipping in 2019

SO_x
24%

NO_x
24%

PM
9%



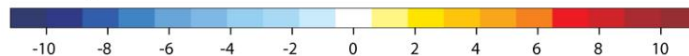
Sulphur Emission Control Areas



Reference data: ©ESRI

2014-2019 Difference of SO_x emissions from shipping in European Seas

Tonnes of SO₂



0 500 1 000 1 500 km



Between 2017-2019,
satellite-controlled area
increased by more than

60%



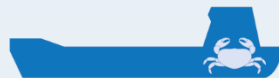
20%
increase in oil trade
(2010-2019)



5
medium oil spills
out of a total of
44
were located
in European seas
(2010-2019)



3
large oil spills
out of a total of
18
were located
in European seas
(2010-2019)



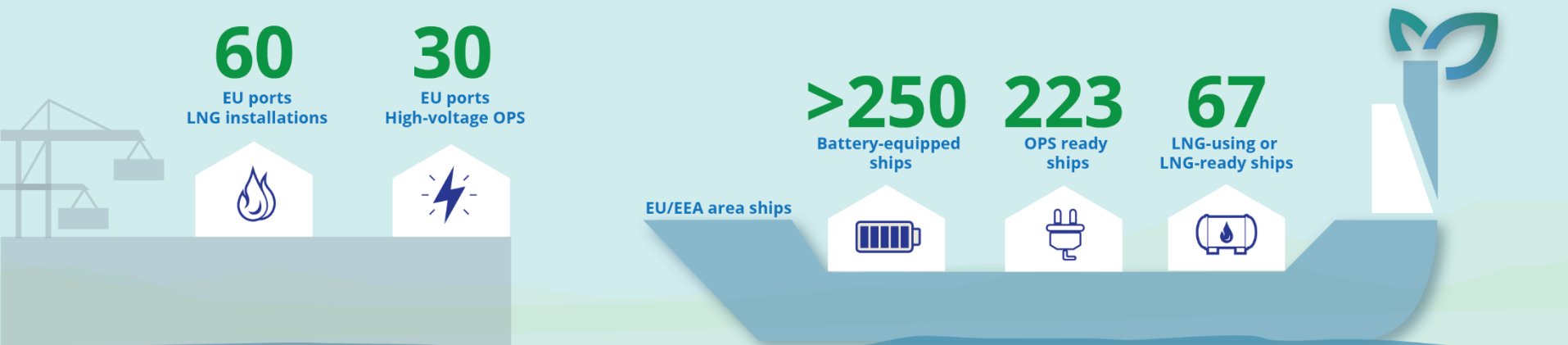
+50%
of non-indigenous species
in EU waters
were introduced
by shipping



x2
Estimation of increase
of total underwater
radiated noise energy
in EU waters
(2014-2019)

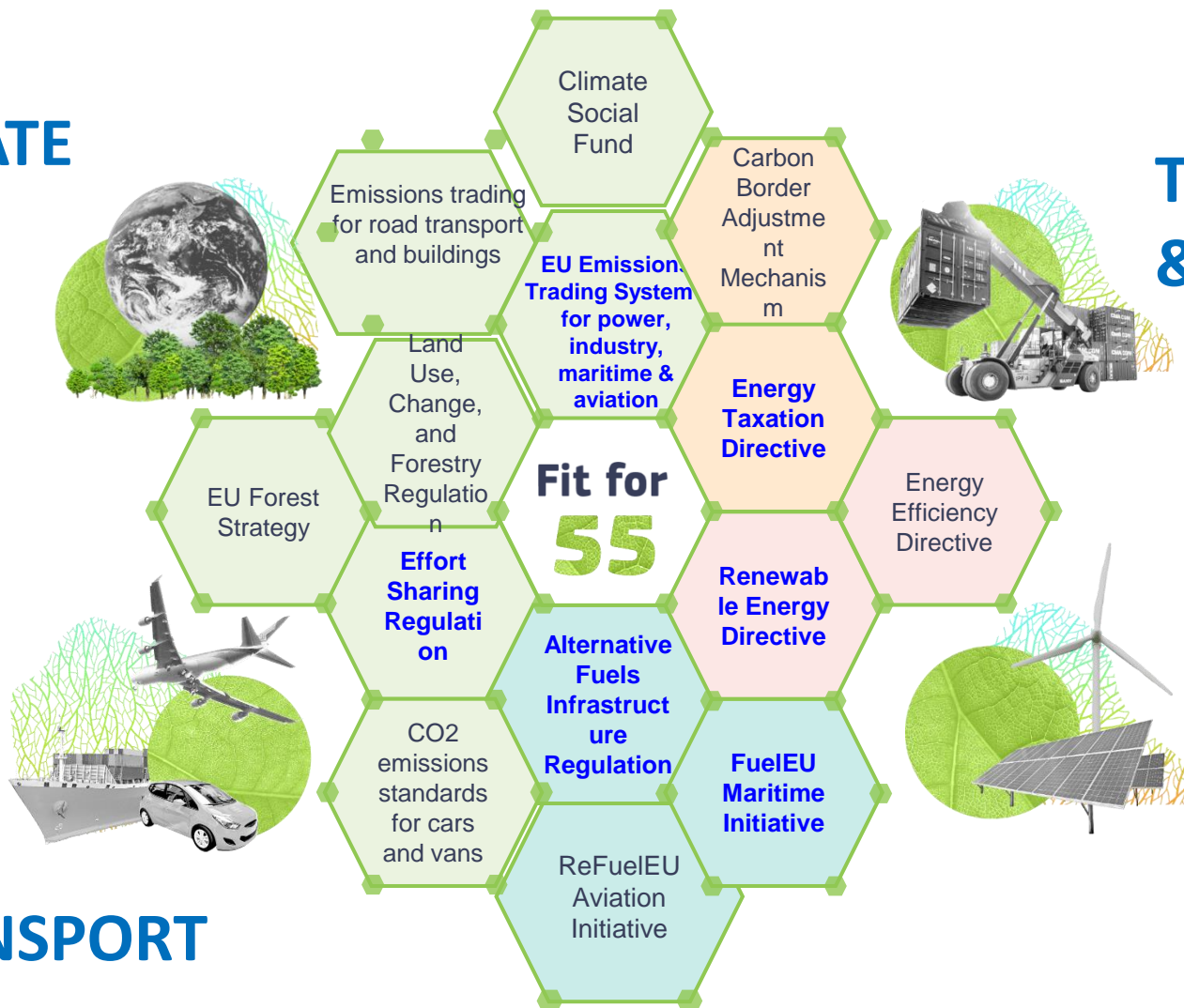


Maritime transport and the future



CLIMATE

TAXATION & TRADE



TRANSPORT

ENERGY

About EMTER:

The European Maritime Transport Environmental Report (EMTER) provides a factual analysis of the environmental pressures exerted by the maritime transport sector, presents up-to-date information on the relevant EU and international environmental standards and describes current and future actions to reduce the sector's impact on our environment. It highlights both the challenges and the opportunities facing the shipping sector, which are of relevance to fostering cooperation at European level.

The EMTER report is a joint project of EMSA and the European Environment Agency (EEA).



Full Report

 [Download EMTER report \(>50Mb\)](#)



Facts & Figures

 [Highlights in 24 EU languages](#)

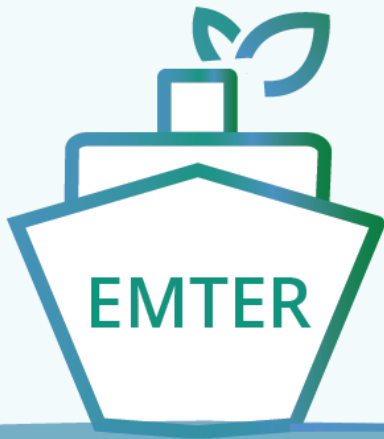


Press Release




 [Press Release in 24 languages](#)

emter@emsa.europa.eu

<http://emsa.europa.eu/emter.html>



Thank you!

-  twitter.com/emsa_lisbon
-  facebook.com/emsa.lisbon
-  Samy.Djavidnia@emsa.europa.eu