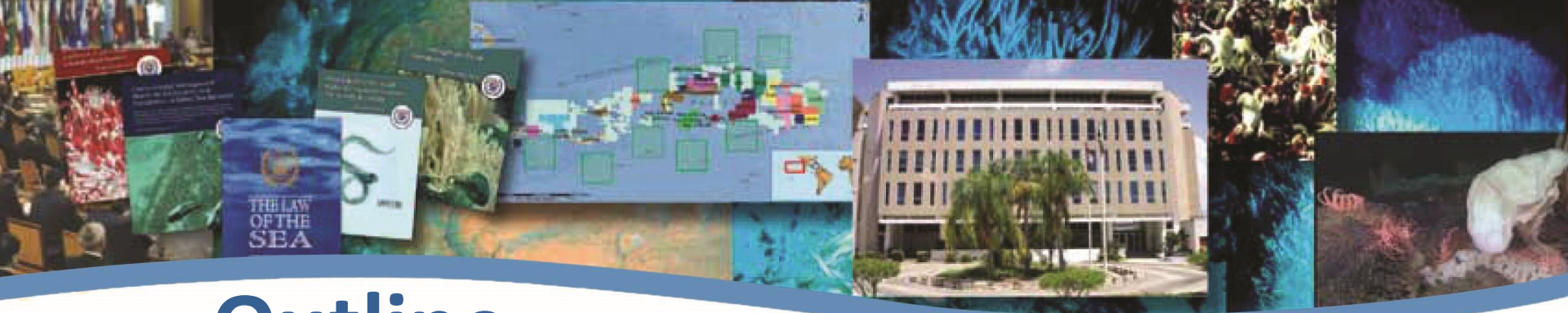


Overview of ISA and EMPs

Workshop towards the development of a strategic EMP for deep seabed mineral exploration and exploitation in the Atlantic Basin

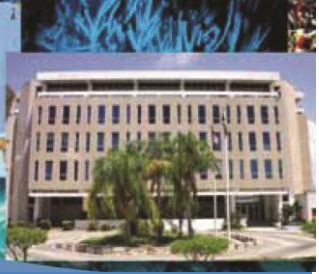
1-3 June 2015, Horta

Dr. Gwenaëlle Le Gurun, Legal Officer
International Seabed Authority



Outline

- I. Overview of the mandate of the ISA
- II-A. Process towards the approval of the CCZ-EMP
- II-B. Overview of the CCZ-EMP
- III. Contracts on the MAR and in the RGR and ISA needs for the development of EMPs
 - III-A. Scoping Objectives
 - III-B. Scoping Challenges



I. Overview of the ISA mandate

- Brief overview of the legal framework for deep seabed activities in the Area with an emphasis on Part XI of UNCLOS/1994 Implementing Agreement/ISA Regulations
- Important responsibilities for the protection of the marine environment and for MSR with a focus on impacts on the environment from activities in the Area
- Environmental obligations of Contractors



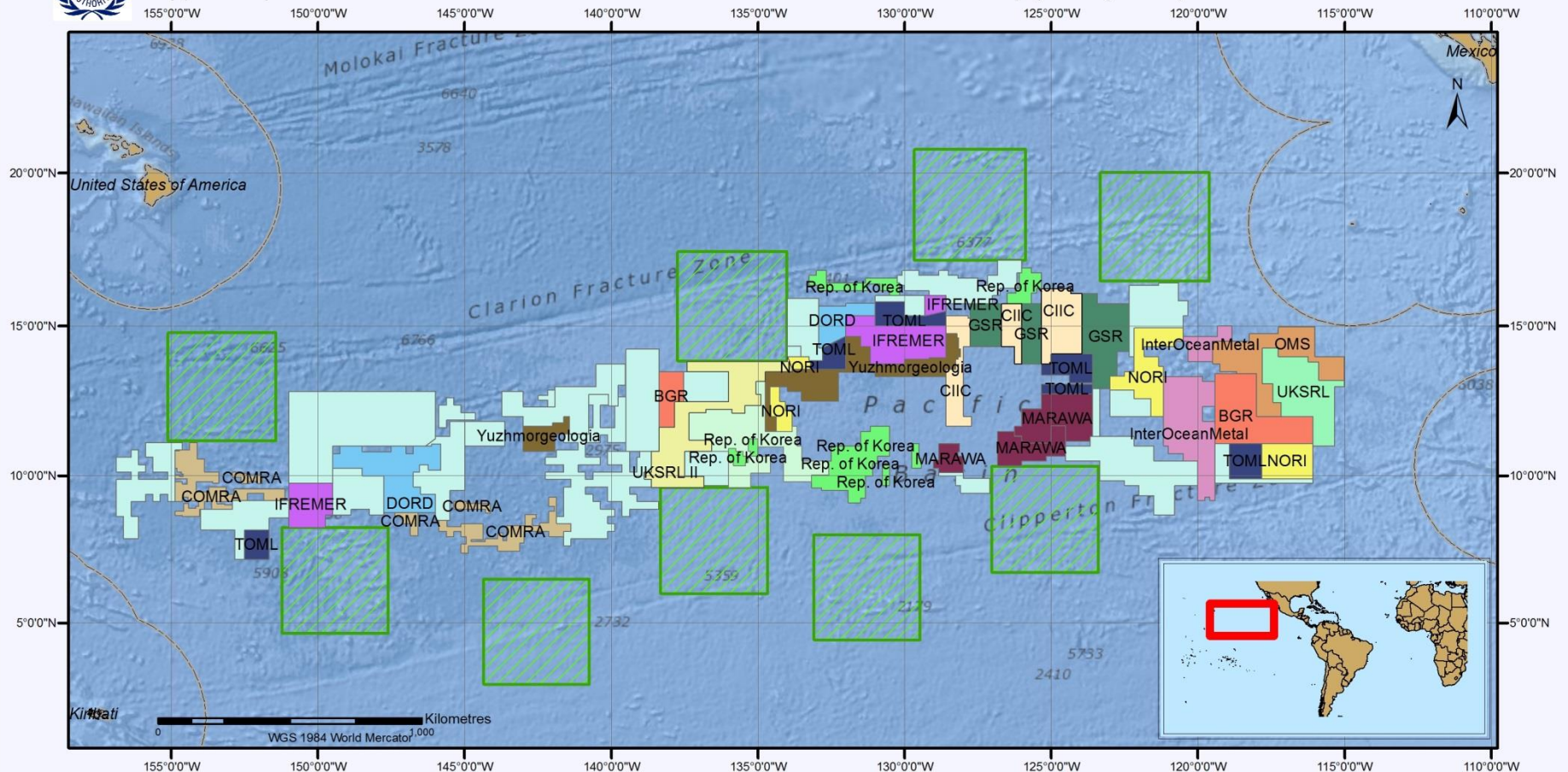
II-A. Process towards the approval of the CCZ-EMP

- **2002:** Workshop on identification of scientific needs
- **2002-2007:** Kaplan Project (2002: 6 ISA contracts)
- **2007:** Proposal originated at the Hawaii Workshop
- **2008:** Proposal refined by the LTC
- **2010:** Workshop to review the proposal in the context of an EMP for the CCZ as a whole
- **2011:** Plan recommended for approval by the LTC
- **2012:** Plan approved by the ISA Council (9 ISA contracts)



Polymetallic Nodules Exploration Areas in the Clarion-Clipperton Fracture Zone

Approved plans of work and areas reserved for the International Seabed Authority (25 July 2014)



Contract area or contract approved as of 25 July 2014

©International Seabed Authority, 2014. Background map: ESRI

- | | |
|---|---|
| Ocean Mineral Singapore Pte Ltd. (OMS) | Government of the Republic of Korea |
| Cook Islands Investment Corporation (CIIC) | Institut français de recherche pour l'exploitation de la mer (IFREMER; France) |
| Marawa Research and Exploration Ltd (Kiribati) | Interoceanmetal (IOM; Bulgaria, Cuba, Czech Republic, Poland, Russian Fed., Slovakia) |
| Bundesanstalt für Geowissenschaften und Rohstoffe (BGR; Germany) | Nauru Ocean Resources Inc. (NORI; Nauru) |
| China Ocean Mineral Resources Research and Development Association (COMRA; China) | Tonga Offshore Mining Ltd (TOML, Tonga) |
| Deep Ocean Resources Development Company (DORD; Japan) | UK Seabed Resources Ltd (UKSRL, UK) |
| G-TEC Minerals Resources NV (GSR; Belgium) | Yuzhmorgeologia (Russian Federation) |
| Reserved area* | UK Seabed Resources Ltd. (UKSRL-2nd plan of work) |
| Area of particular environmental interest (APEI)** | Exclusive Economic Zones |

* In the case of polymetallic nodules, the so-called parallel system provides that each application for exploration by a developed State must cover two parts of "equal estimated commercial value". One part is allocated to the applicant and the other is to become the reserved area, which is set aside for the conduct of activities by the Authority or developing States.

** In July 2012, the Authority adopted an environmental management plan for the Clarion-Clipperton Zone to be implemented on a provisional basis over an initial three-year period. The plan includes the designation of a network of areas of particular environmental interest (ISBA/18/C/22).



II-B. Overview of the CCZ-EMP

- Brief introduction to the EMP
- Legal basis for the EMP
- Guiding principles
- Review of the EMP, role of MSR and role of contractors
- A strategic environmental assessment

III. Contracts on the MAR and in the RGR and ISA needs for the development of SEMP

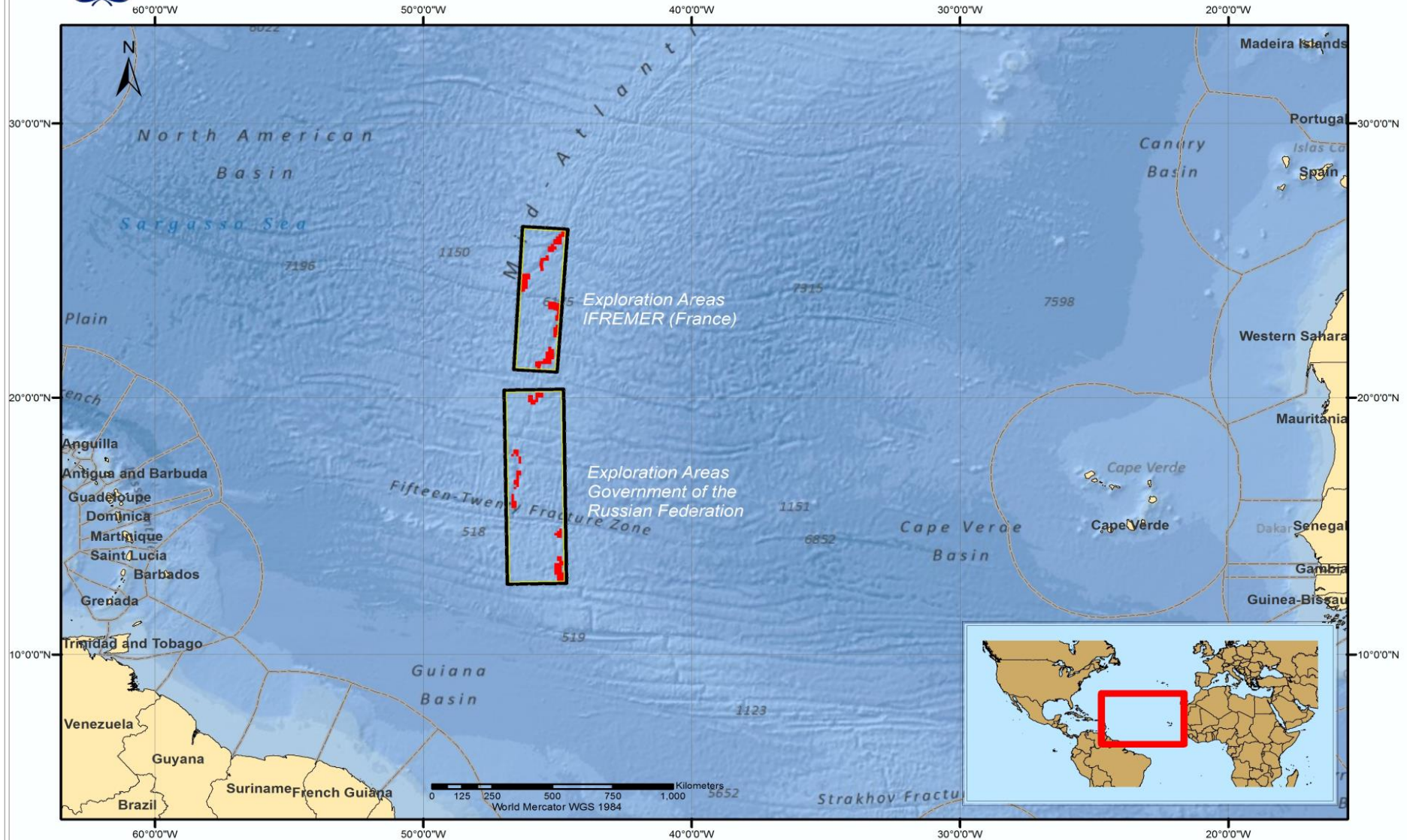
- Two contracts for exploration for polymetallic sulphides (MAR)
- One contract for exploration for cobalt-rich ferromanganese crusts (RGR)





Polymetallic Sulphides Exploration Areas on the Mid-Atlantic Ridge

Areas under contract or approved by the International Seabed Authority



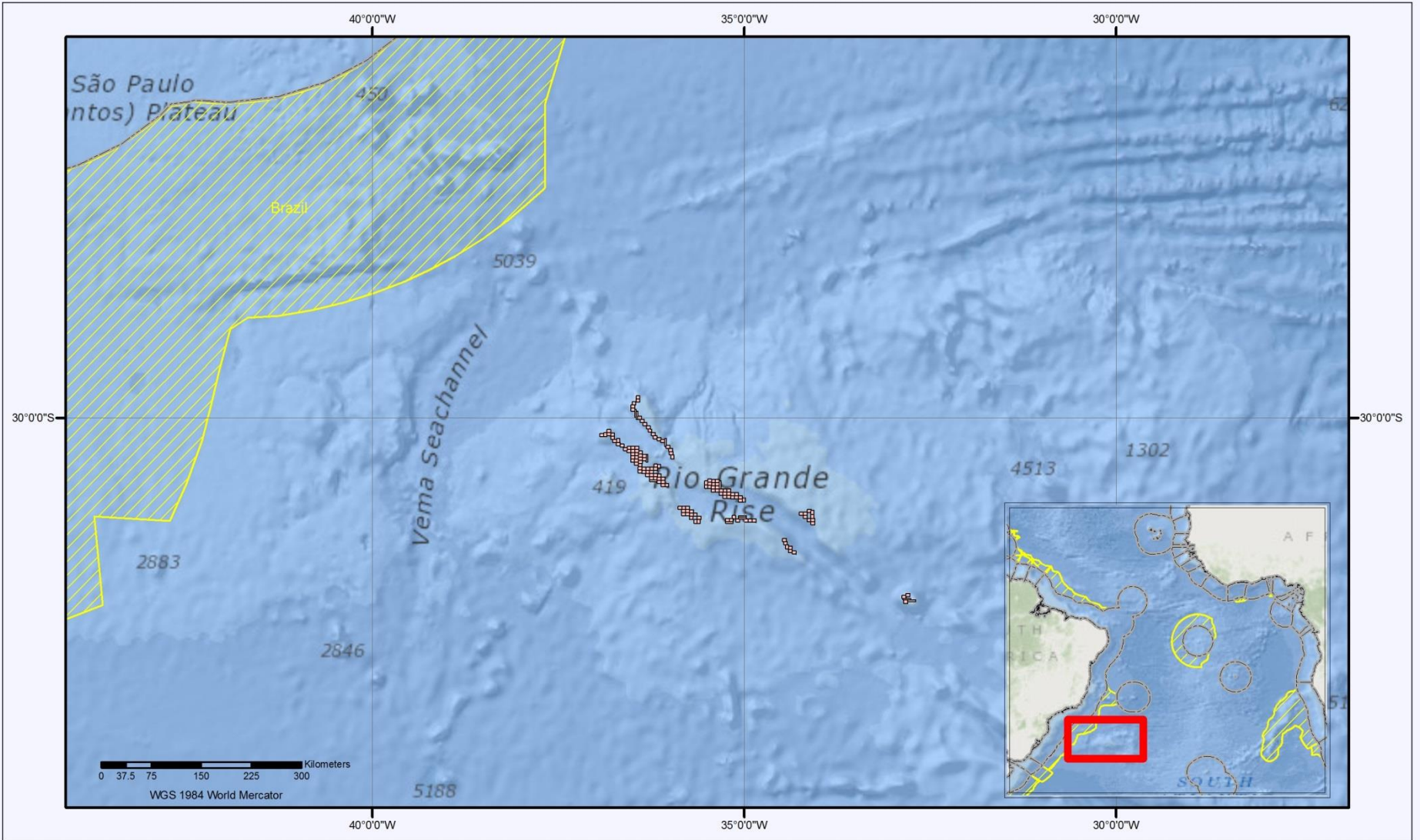
- Exploration block (approx. 10 x 10 km)
- Confinement area containing 100 polymetallic sulphides exploration blocks*
- EEZ Boundaries (VLIZ 2011)

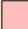


* According to the Regulations on prospecting and exploration for polymetallic sulphides, a maximum of 100 exploration blocks (not exceeding 100 sq. km) must be arranged in clusters with at least five contiguous blocks. Clusters need not be contiguous, but shall be confined within a rectangular area, where the longest side does not exceed 1,000 km.



Cobalt-Rich Ferromanganese Crust Exploration Areas on South Atlantic Seamounts

Approved plans of work



 Companhia de Pesquisa de Recursos Minerais (Brazil) exploration area (150 blocks*)  Exclusive Economic Zone  ECS Submission

* Blocks must not exceed 20 sq km and must be located within an area measuring not more than 550 x 550 km.

III-A. Scoping Objectives

- Gathering available data from as many stakeholders as possible : excellent data report
- Establishing a robust scientific case, a first step to developing any SEMP
- A single SEMP or several SEMPs? How to establish a network of APEIs? APEIs and buffer zones size and locations? Based on which scientific drivers? Based on what available data? Identification of gaps and of priority for future MSR



III-B. Scoping Challenges

- Differences with the CCZ-EMP:
 - early stage for contractors but more MSR including by Contractors;
 - different resources, size of exploration areas, settings and biological characteristics;
 - more activities (fisheries, deep seabed exploration for sulphides, MSR, cables, shipping);
 - need for coordination of environmental measures in an integrated approach.

