



**EMODnet**



European Marine  
Observation and  
Data Network

# EMODnet Geology 5 Data Management and services

16<sup>th</sup> EMODnet Steering Committee  
27-28 April 2022

Bjarni Pjetursson, [bpj@geus.dk](mailto:bpj@geus.dk)

GEOLOGY

# Data management

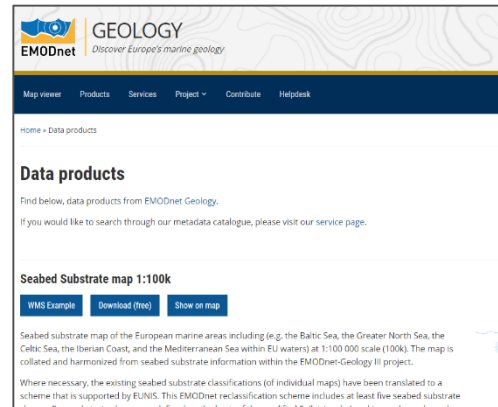
## Portal

- Manage and maintain
- Web-GIS and services
- KPI statistics



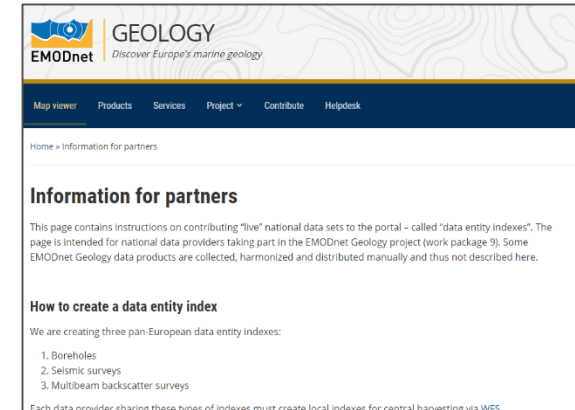
## Data product management

- Assist WP-leads
- Store and register
- Publish



## Data entity indexes

- Harvest
- Harmonize & merge
- Publish

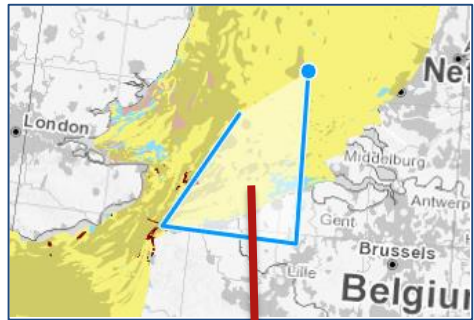
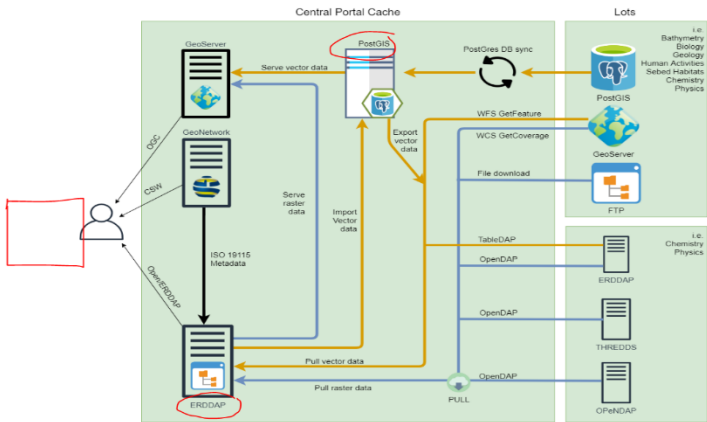


# Current focus

Portal migration

Open-source and open-standards

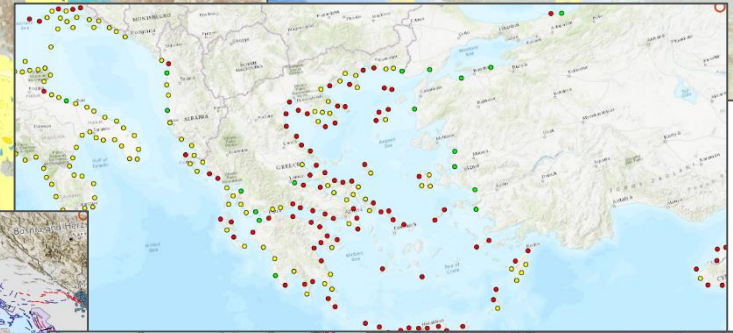
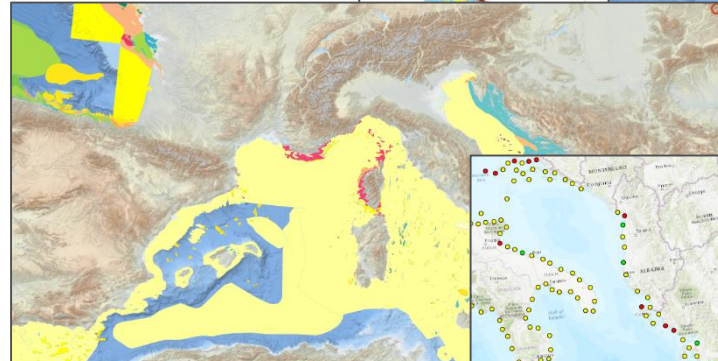
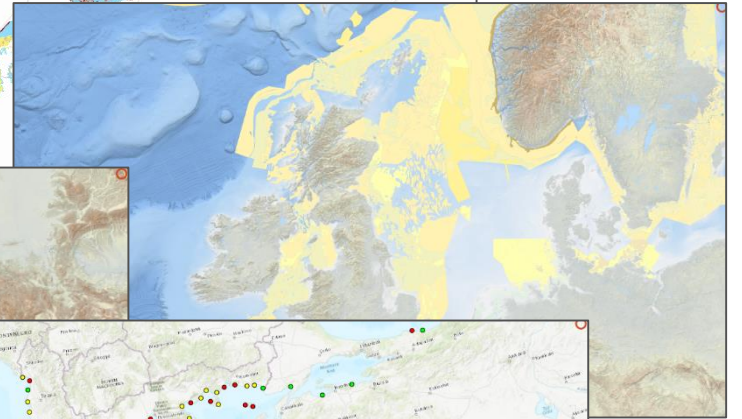
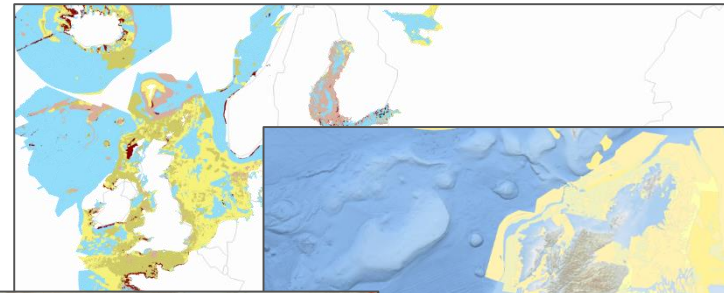
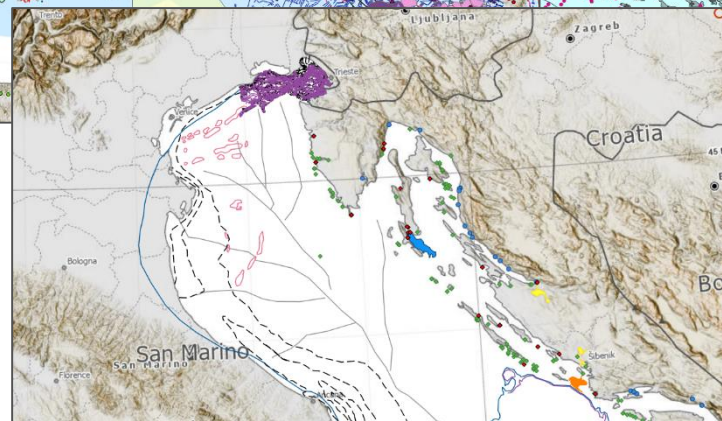
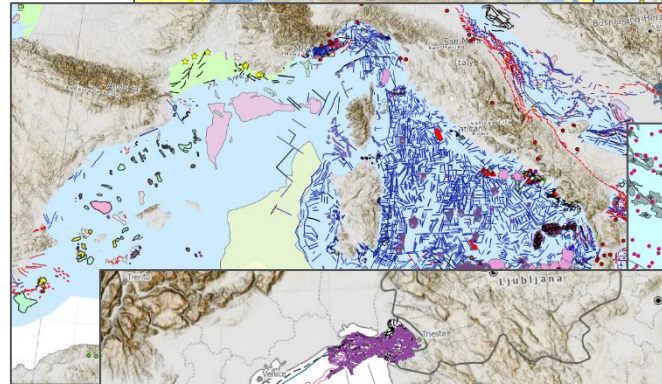
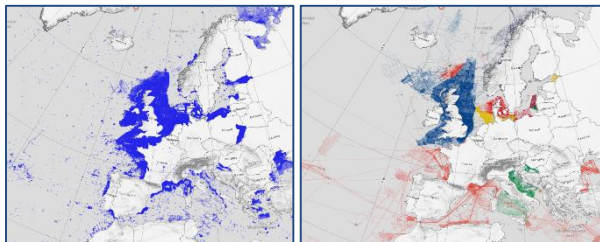
Spatial filter download using Web-GIS



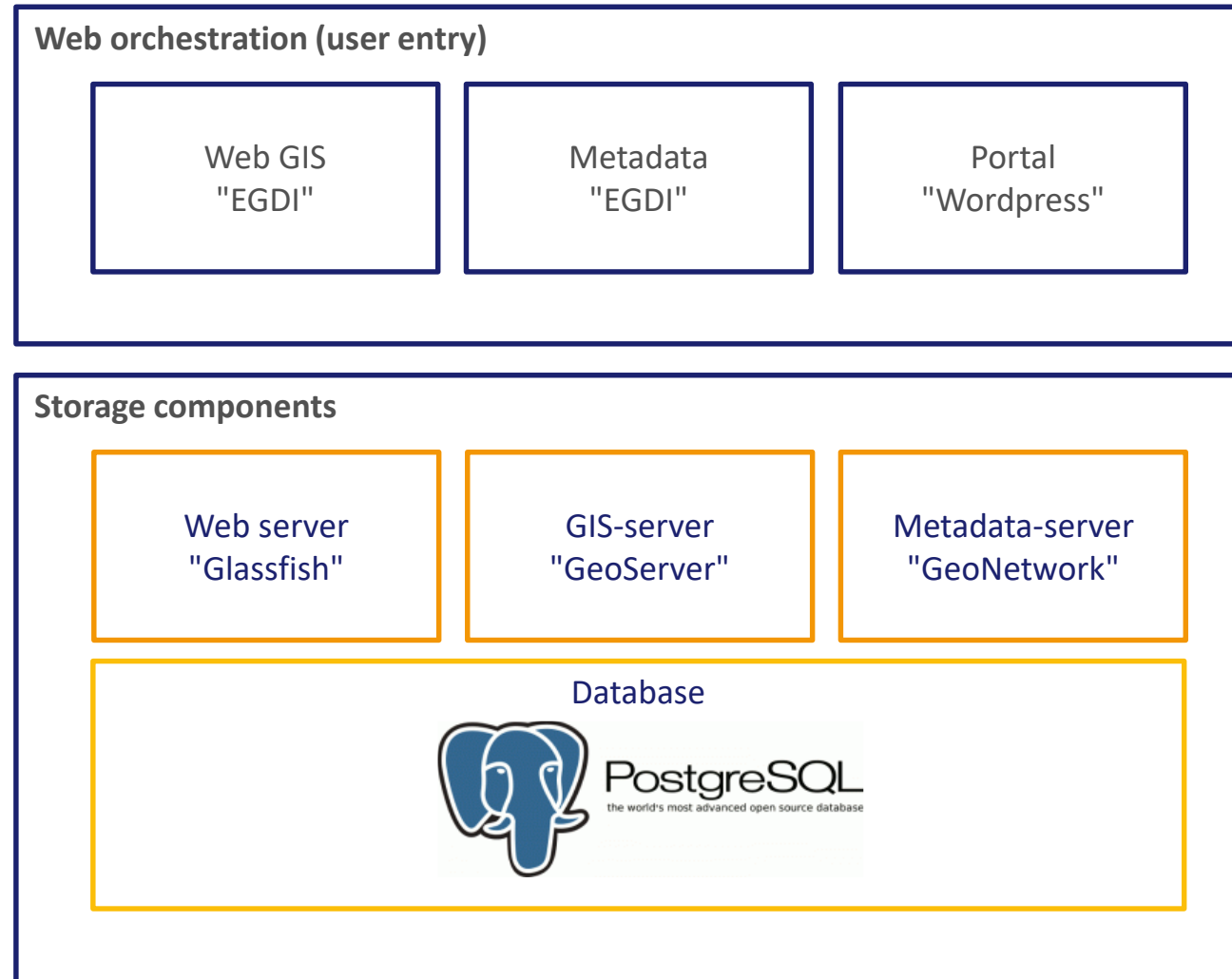
# Inventory - Data products



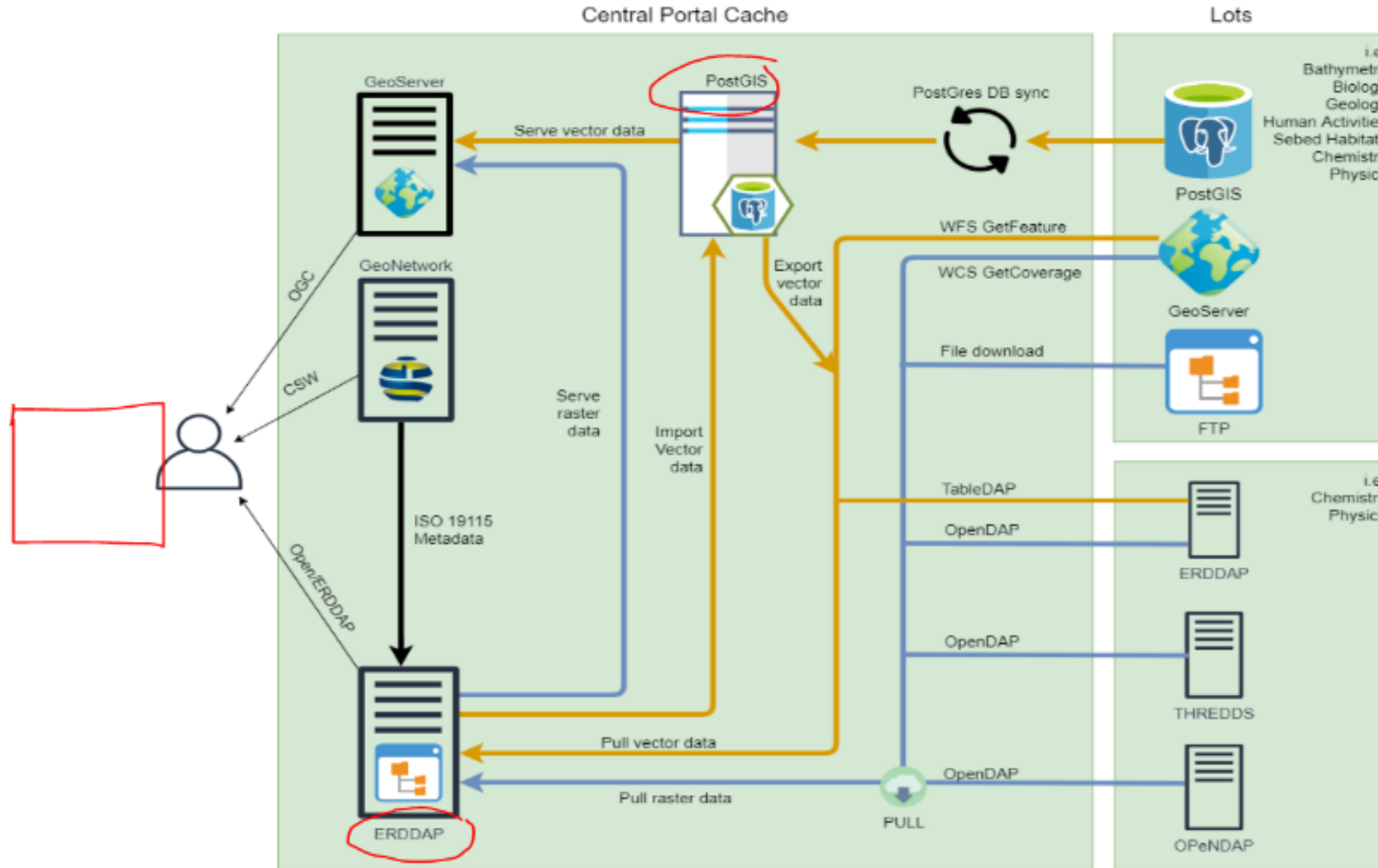
- Seabed Substrate
- Sea-floor Geology
- Coastal Behavior
- Events & Probabilities
- Marine Minerals
- Submerged Landscapes
- Entity indexes



# Technical setup (pre-migration)

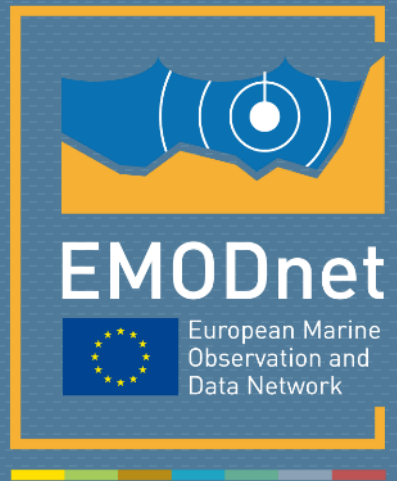


# Post migration



# Technical deliverables - this phase

- Test new ways of presenting data
  - 3D models – e.g. [the EGDI prototype](#)
  - Story maps – e.g. [this seamount story](#)
- Dynamic legends
  - Less “paper legends” more interpretation guidance
  - Clickable legends
- Portal migration
  - Everything except database, OGC services and web-GIS



[emodnet.ec.europa.eu](http://emodnet.ec.europa.eu)

*Your gateway to marine data in Europe*

