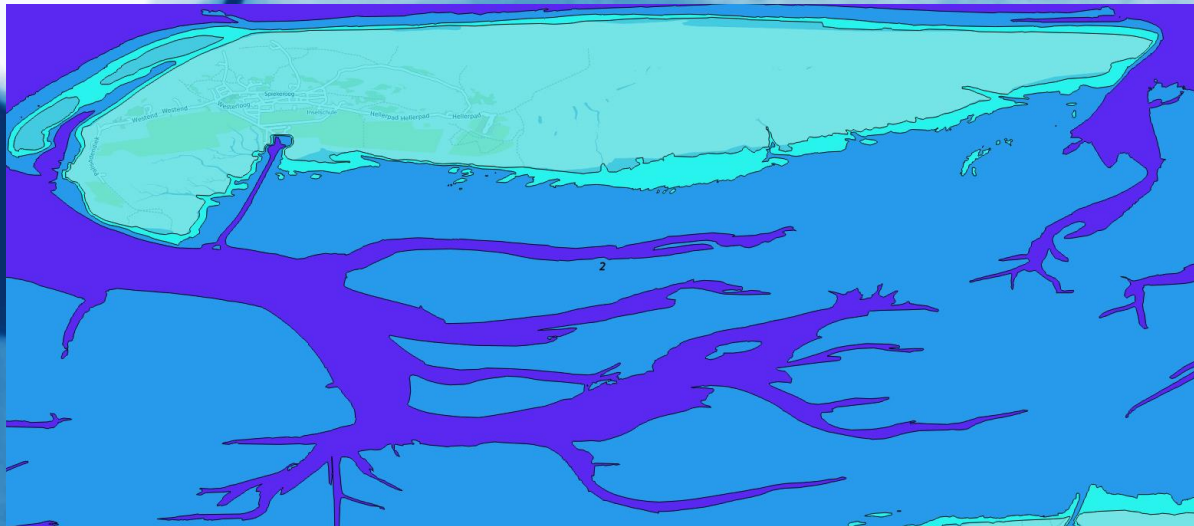




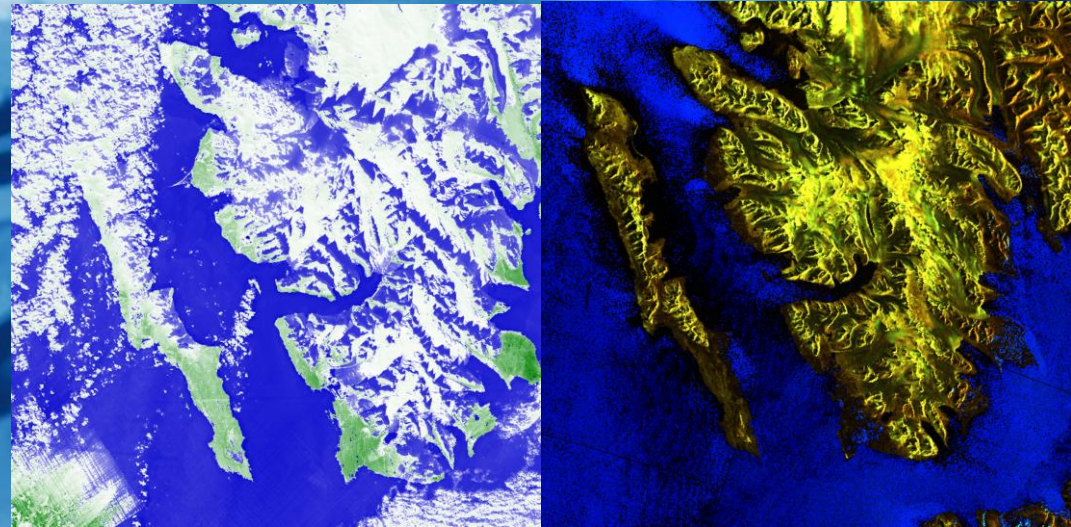
EMODnet – Bathymetry

Martin Verlaan
February 9 2021
EMODnet-CMEMS meeting

Satellite Derived Coastline for Europe

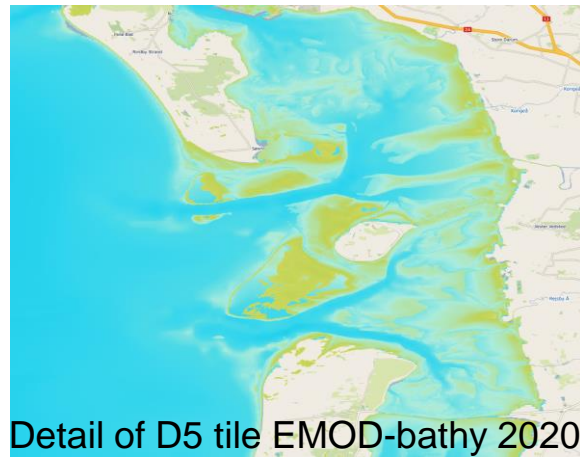
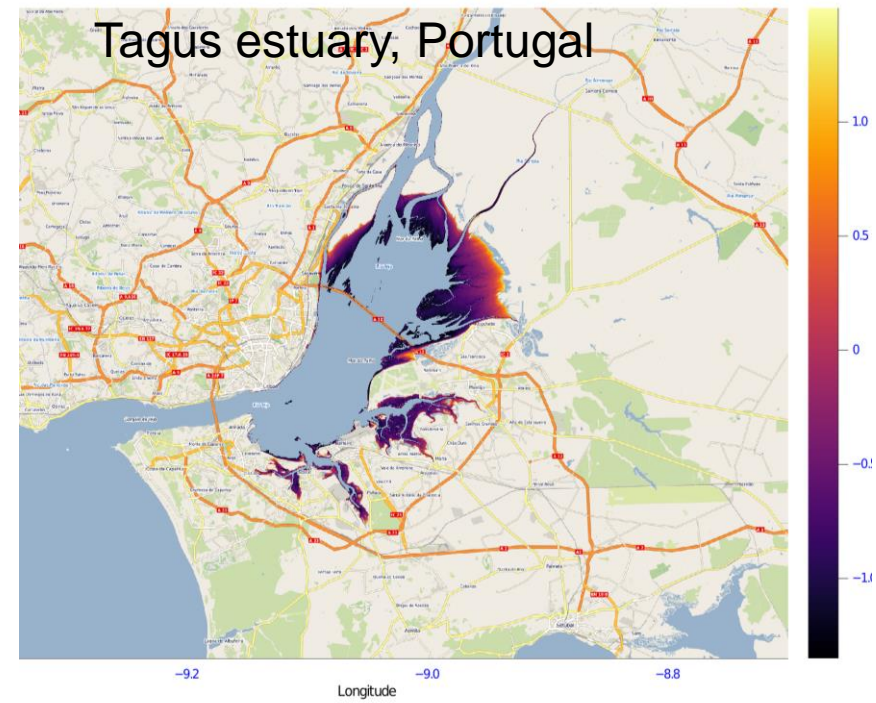
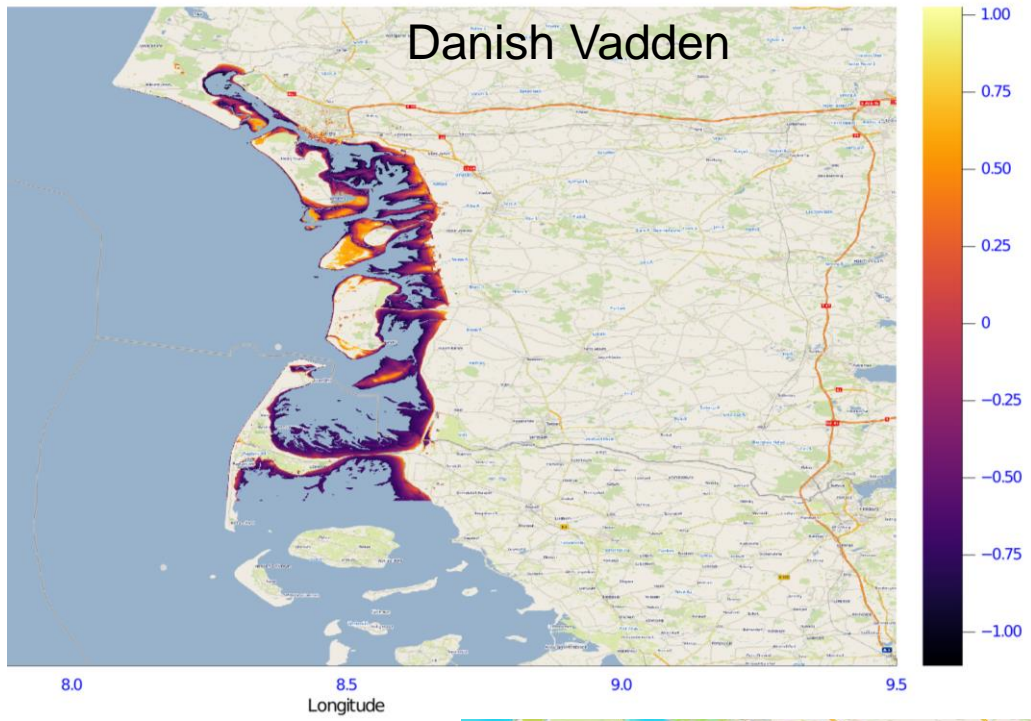


Coastline at Low-tide, MSL and High-tide, as well as the inter-tidal area



Improved coastline in Arctic region using Optical and SAR Images from Sentinel

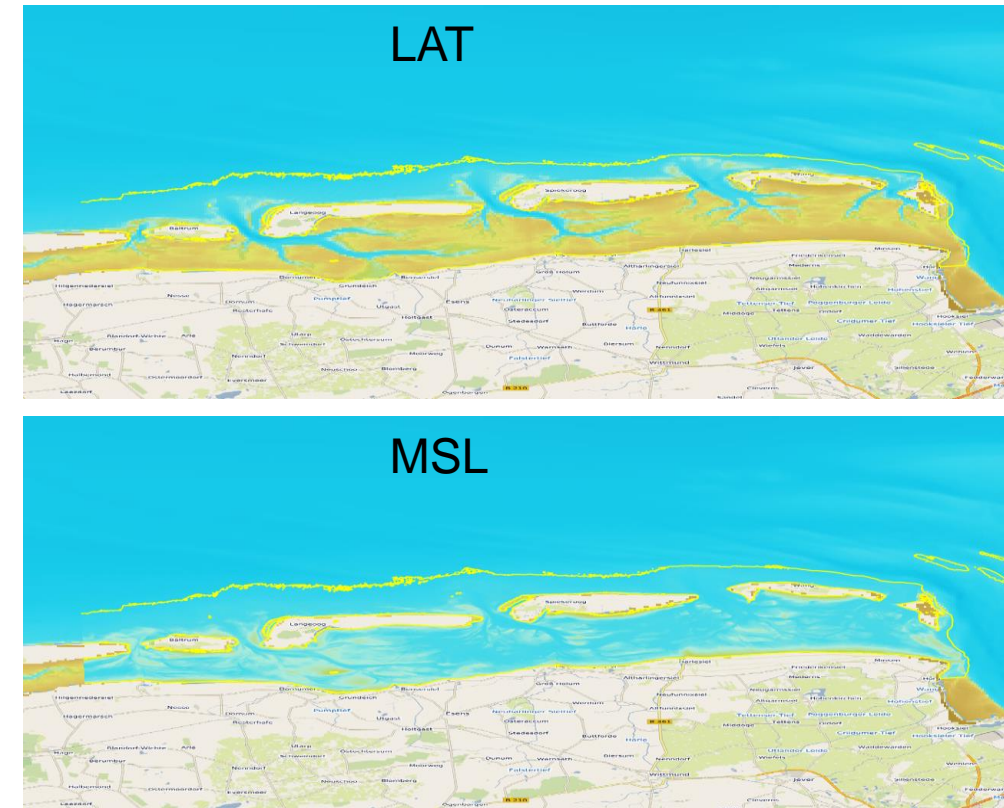
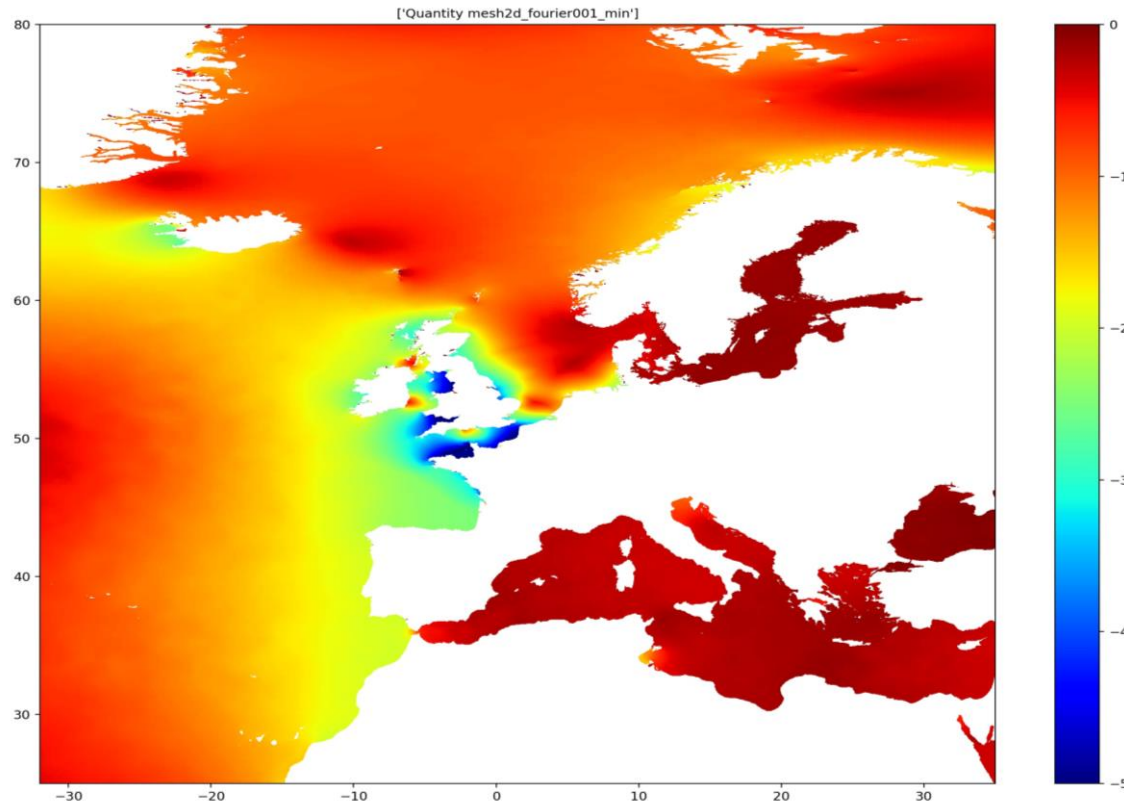
Satellite Derived Intertidal Bathymetry



Deltares

SDIB is fully integrated in EMODnet bathymetry
And focusses on areas where traditional surveys are lacking

The EMODnet gridded bathymetry is now available as LAT and MSL



Computed LAT-MSL difference EMODnet2018 bathymetry

Example of difference in shallow water

- MSL is a more natural reference for Ocean models and Coastal models
- Improved tides in Baltic and Mediterranean using CMEMS GLORYS T/S