

SPLASHCOS, SUBLAND, MODEG

- Main data provided by Hauke Jöns, SPLASHCOS, COST Action TD0902
- Added notes by Nic Flemming, SUBLAND, European Marine Board

MODEG, 22 Sept 2013



Cost Action
TD0902

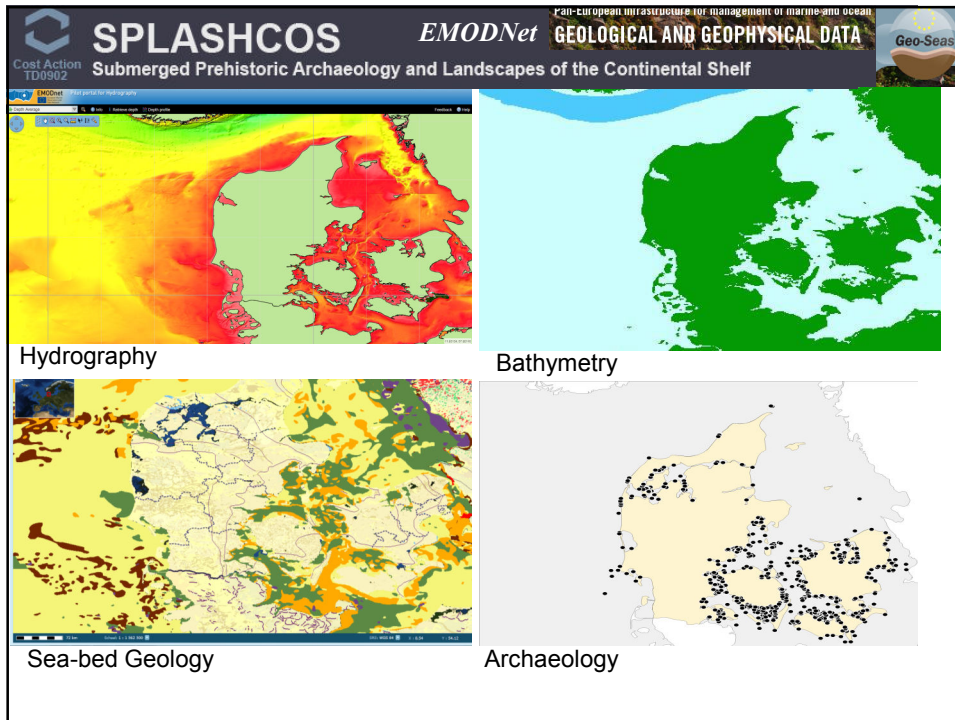
SPLASHCOS

Submerged Prehistoric Archaeology and Landscapes of the Continental Shelf

**Discover the submerged prehistoric sites
of Europe
- the Splashcos-viewer**

... still work in progress





SPLASHCOS
 Cost Action TD0902 Submerged Prehistoric Archaeology and Landscapes of the Continental Shelf

Country	Correspondant
Belgium	Marnix Pieters
Bulgaria	Helena Angelova
Croatia	Irena Radic Rossi
Denmark	Anders Fischer
Estonia	Aivar Kriiska
France	Cyrille Billard
Germany	Hauke Jöns
Greece	Katerina Dellaporta
Ireland	Kieran Westley
Israel	Ehud Galili
Italy	Elena Flavia
Latvia	Valdis Berzin
Lithuania	Algirdas Girininkas
Malta	Tim Gambin
Netherlands	Andrea Otte
Norway	Hakon Glørstad
Poland	Prezemyslaw Krajewski
Portugal	Nuno Bicho
Romania	Valentina Voinea
Spain	Pablo Arias
Sweden	Björn Nilsson
Turkey	Hakan Oniz
UK	Garry Momber
Ukraine	Valentina Yanko-Hombach

**Big Challenge:
 Data needed from all countries**

**Splashcos-Network
 in operation!**

Splashcos-viewer: Structure of information

Country	Northern Ireland (UK)	Depth below regionally defined mean sea level	0-1
Sitename	Oimeau Bridge	Specification of the referred system	below normal high tide
Site number		Organic material	Yes
Type of site	Collection of finds (unstratified)	Single find (unstratified)	
Further specification of type of site	Collection of finds (unstratified)	Settlement (in situ culture layer, features)	idden in intertidal estuary
Archaeological dating	Mesolithic	Grave/graves	
Beginning (years BC)	80	Depotfind/Offering	
Ending (years BC)	40	Rock Art/Carvings	
Dating based on	Typochronology	Others	and Oxford: Archaeopress.

Datensatz: 2261 von 2446

Splashcos-viewer: Structure of information

Country	Northern Ireland (UK)	Depth below regionally defined mean sea level	0-1
Sitename	Oimeau Bridge	Specification of the referred system	below normal high tide
Site number		Organic material	Yes
Type of site	Collection of finds (unstratified)	Further information	Lithic material and 1 deer bone from poss midden in intertidal estuary
Further specification of type of site			
Archaeological dating	Mesolithic	Stone Age	Palaeolithic
Beginning (years BC)	8000		Upper Palaeolithic
Ending (years BC)	4000		Middle Palaeolithic
Dating based on	Typochronology		Late Palaeolithic
			Late Paleolithic/Early Mesolithic
			Mesolithic
			Early Mesolithic
			Middle Mesolithic
			Late Mesolithic
			Late Mesolithic/Early Neolithic
			Neolithic
			Early Neolithic
			Middle Neolithic
			Late Neolithic
			Late Neolithic/Early Bronze Age
			Bronze Age

Datensatz: 2261 von 2446

Splashcos-viewer: Structure of information

Country	Germany	Depth below regionally defined mean sea level	0-2 m
Site name	Bergen	Specification of the referred system	below recent sea level
Site number		Organic material	yes
Type of site	Settlement (in situ culture layer)	Further information	"Brietzer Ditt", three phases of usage (late Mesolithic campfire (c. 5600-5500 cal BC) covered by terminal Mesolithic finds of the middle Enebelde culture (c. 4800-4500 cal BC) and the final Mesolithic (4200-4100 cal BC). Positioned in: VI: 13°00'-13°30'
Further specification of type of site		url	http://www.kulturwerte-nv.de/cms2/LAKD_prod/LAKD/content/de/Startseite/index.jsp
Archaeological dating	Late Mesolithic	References	Hartz et al. In Berichte der Römisch-Germanischen Kommission 100
Beginning (years BC)	5600		
Ending (years BC)	4100		
Dating based on	Radiocarbon Dating		

Datensatz: 1797 von 2446

Lokalitet - Mozilla Firefox

www.kulturarv.dk/fundogfortidsminder/Lokalitet/6620/

FUND OG FORTIDSMINDER

FORSIDE | SÆG PÅ KORT | SØGNING | DOWNLOAD | HJÆLP OG INFO

Tybrind Vig

Administrative oplysninger

Ansvarligt museum
Øhavsmuseet

Sted- og lokalitetsnr.
401521-6

Printvenlig side

Gå til kortsgning | Ruteplanlægger

Anlæg og datering (3)

- Kulturlag, Stenalder (dateret 4300 - 3951 f.kr.)
- Wrag, Stenalder (dateret 5400 - 3951 f.kr.)
- Jordfæstegrav, Stenalder (dateret 5400 - 3951 f.kr.)

Undersøgelsehistorie (20)

Genstande (0)

Litteraturhenvisninger (0)

Kontakt | Sikring og tilgængelighed | Privatpolitik | Regler for brug

Kulturarvsstyrelsen - H.C. Andersens Boulevard 2, 1553 København V

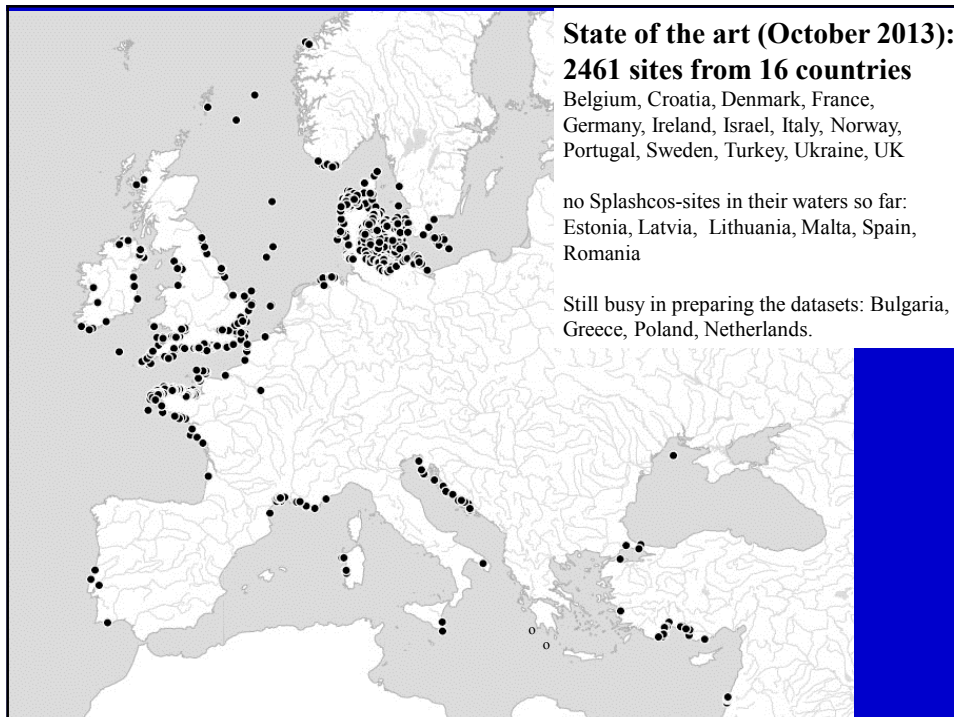
Undersøgelsehistorie (20)

- 1975 Privat opsamling
Moesgård Museum
Under dykning ca. 2-300 m fra kysten fandtes gytjebag med indhold af æstær, dyrekogler, tak, træ og fintoldgæser.
- 1976 Privat opsamling
Moesgård Museum
Opsamling af 2 kernefragmenter.
- 1976 Privat opsamling
Moesgård Museum
Under dykkerselskabets opsamlende genstande af træ, bl.a. en øre.
- 1978 Museal prævegravning
Moesgård Museum
FHM og dykkerklubben Marine Arkæologisk Gruppe udførte dykkerundersøgelser i Tybrind Vig, hvorved to submerse kopådsmeduller med udmålede lokaliteterne A og B blev fundet.
- 1983 Privat grafisk eller digital dokumentation
Moesgård Museum
TV-Fredensia optog en film om Tybrind Vig Projektet.
- 1985 Privat grafisk eller digital dokumentation
Moesgård Museum
Danmarks Radio optog et tv-program om udgravningerne i Tybrind Vig, som blev udsendt i serien "Vi graver".
- 1987 Privat grafisk eller digital dokumentation
Moesgård Museum
I samarbejde med TV-Båndarkivet produceredes en film om Tybrind Vig projektet i løbet af den sidste udgravningskampagne på stedet.
- 1987 Museal udgravning
Moesgård Museum
Hver sommer i perioden 1978 til 1987 foretog FHM i samarbejde med dykkerklubben H.A.G., arkæologistudenterne og mange frivillige dykkere marinearkæologiske udgravninger i Tybrind Vig. I forbindelse med de mange kampagner fremkom en lang række genstande af fint, tak, knogler m.m., mange fauna- og floralevn samt usædvanligt velbevarede genstande af træ som f.eks. 2 stammebåde, bemalede påklæde, fiskegarn m.m. Desuden fremkom spor efter en gravlægsbe fra Enebelde-kulturen, hvor dele af et kvindel- og et børnskelet var bevaret.

Splashcos-viewer: Structure of information

Country	Italy (Sicily)	Depth below regionally defined mean sea level	#Zahl
Sitename	Thapsos	Specification of the referred system	
Site number		Organic material	no
Type of site	Grave/graves	Further information	
Further specification of type of site	rock-cut chamber tomb	url	
Archaeological dating	Bronze Age	References	Scicchitano G., Antonelli F., Castagnino Berlinghieri E.F., Dutton A., Monaco C. (2008) Submerged archaeological sites along the Ionian coast of southeastern Sicily (Italy) and implications for the Holocene relative sea-level change <i>Quaternary Research</i> 70: 23-36.
Beginning (years BC)	1400		
Ending (years BC)	1300		
Dating based on	Typochronology		

Datensatz: 2219 von 2446



Visualisation

Splashcos-Viewer and Access service

The screenshot shows the Geo-Seas Splashcos-Viewer interface. It features a map of Europe with numerous data points. A layer control panel on the right lists various data layers such as 'SMORC entry Tracks', 'SeaDataNet Meteocean Data', and 'Regional sea'. Below the map is a table of records.

	A	B	C	D	E	F
1750	Germany	Neustadt	156	Collection of finds (unstratified)		Late Mesolithic/Early
1751	Germany	Neustadt	159	Collection of finds (unstratified)		Late Mesolithic/Early
1752	Germany	Dassow/Ostsee	10	Collection of finds (unstratified)		Stone Age
1753	Germany	Gägelow	2	Collection of finds (unstratified)		Mesolithic
1754	Germany	Gägelow	3	Collection of finds (unstratified)		Stone Age
1755	Germany	Gägelow	7	Collection of finds (unstratified)		Stone Age
1756	Germany	Gägelow	10	Settlement (in situ culture layer, features)		Late Mesolithic
1757	Germany	Klützer Winkel/	5	Collection of finds (unstratified)		Neolithic
1758	Germany	Poel/Neuburg	5	Collection of finds (unstratified)		Late Mesolithic
1759	Germany	Poel/Neuburg	12	Settlement (in situ culture layer, features)		Late Mesolithic
1760	Germany	Poel/Neuburg	14	Collection of finds (unstratified)		Mesolithic
1761	Germany	Poel/Neuburg	15	Settlement (in situ culture layer, features)		Neolithic

Visualisation

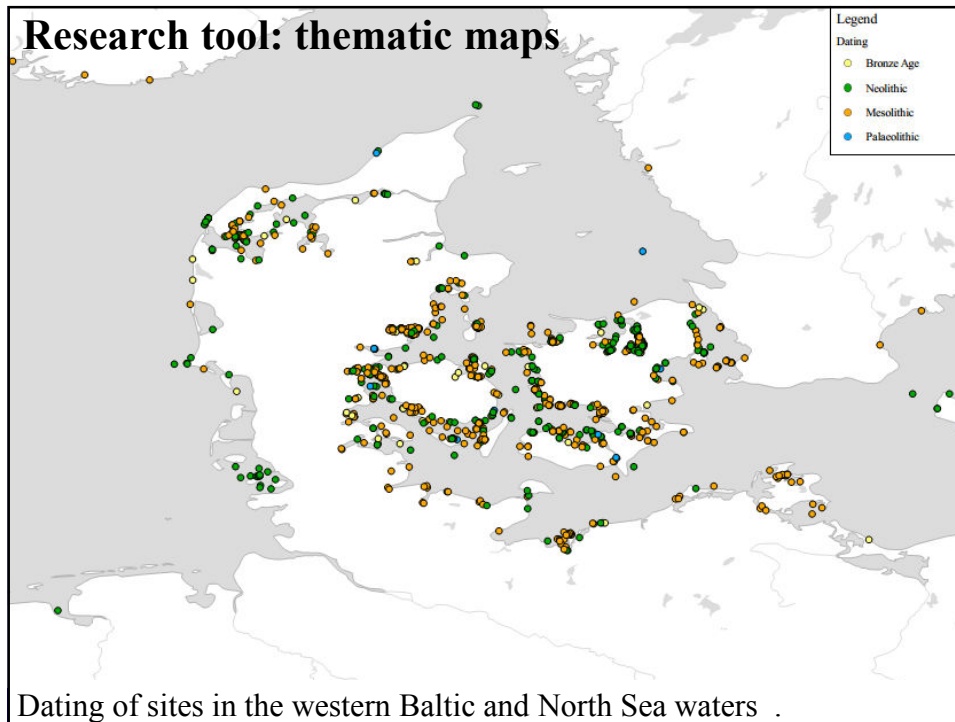
Splashcos-Viewer and Access service


The screenshot shows the Geo-Seas Splashcos-Viewer interface with a map of Europe. A yellow information box is overlaid on the map, providing details for a specific site. Below the map is a detailed form for site information.

Info

Germany
Bergen 24
Settlement
Late Mesolithic
Radiocarbon dated
Organic material


Country	Germany	Depth below regionally defined mean sea level	0-2 m
Site name	Bergen	Specification of the referred system	below recent sea level
Site number	24	Organic material	yes
Type of site	Settlement (in situ culture layer)	Further information	"Bretzler Ort", three phases of usage (late Mesolithic campfire (c. 5600-5500 cal BC) covered by terminal Mesolithic finds of the middle Ertebølle culture (c. 4800-4500 cal BC) and the final Mesolithic (4200-4100 cal BC). Positioned in: VI: 13°00'-13°30'
Further specification of type of site		url	http://www.kulturwerte-mv.de/cms2/LAKD_prod/LAKD/content/de/Startseite/index.jsp
Archaeological dating	Late Mesolithic	References	Hartz et al. In: Berichte der Römisch-Germanischen Kommission 100
Beginning (years BC)	5600		
Ending (years BC)	4100		
Dating based on	Radiocarbon Dating		





SPLASHCOS
Cost Action TDU902 Submerged Prehistoric Archaeology and Landscapes of the Continental Shelf

<p>Thanks a lot to the Correspondants</p> <p>Marnix Pieters Helena Angelova Irena Radic Rossi Anders Fischer Aivar Kriiska Cyrille Billard Hauke Jöns Katerina Dellaporta Kieran Westley Ehud Galili Elena Flavia Valdis Berzin Algirdas Girininkas Tim Gambin Andrea Otte Hakon Glørstad Prezemyslaw Krajewski Nuno Bicho Valentina Voinea Pablo Arias Björn Nilsson Hakan Oniz Garry Momber Olena Smyntyna</p>	<p>Thanks for implementing the Splashcos Viewer into the GeoSeas System to:</p> <p>Sytze van Heteren & Dick Schaap</p> <p>Thanks for technical support to</p> <p>Moritz Mennenga & Ingo Eichfeld</p>
--	--



thank you for listening ...

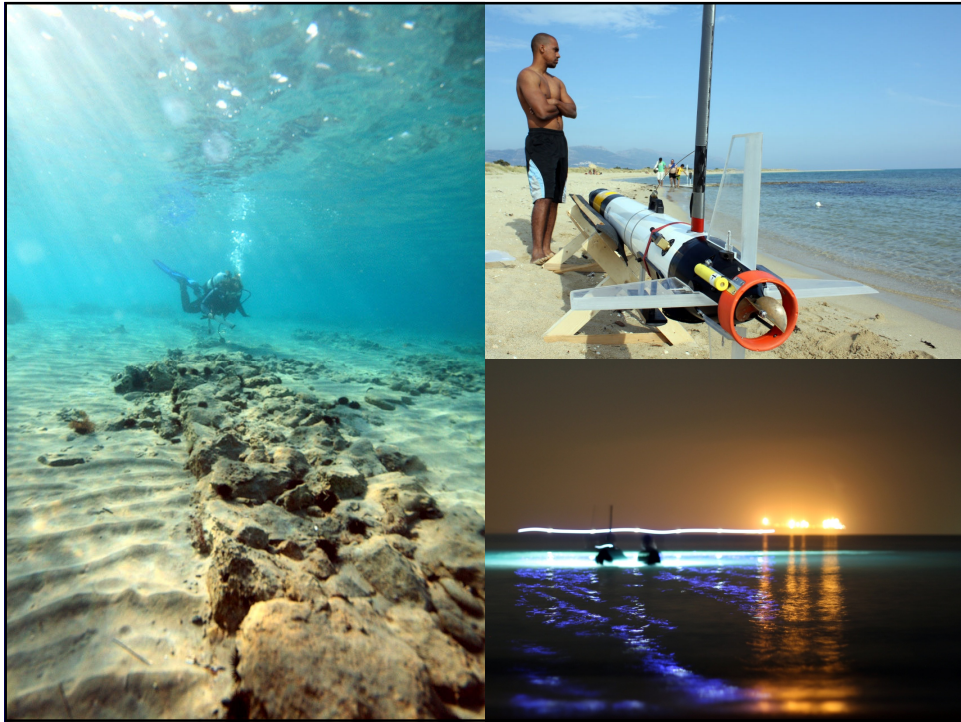
EMB, SUBLAND Objective

POSITION PAPER to:

Describe present status, and recommend a strategic research framework for short-term and long-term study of European continental shelf prehistoric deposits, relating them to seabed mapping, high-resolution local Pleistocene climatic and environmental conditions, and facilitating preservation of the Cultural Heritage. Report Oct. 2014.



Woolly Mammoth skull, Stellendam, 2006, courtesy Dick Mol



Why SUBLAND now?

- The community of scholars studying seabed prehistoric sites has been growing slowly, but increasing exponentially, for about 50 years.
- Number of projects and publications per year is increasing exponentially.
- SPLASHCOS/Deukalion has created links between over 150 researchers from more than 30 specialist academic disciplines. Total grants over 4 years was 22 million euros.
- This European network now needs a more permanent and institutional basis, with broad research objectives, linked to training courses, and strong links between marine geoscience agencies and national heritage agencies and universities.

1st Meeting: Decisions, Actions, Done

- Accept the draft topics of the chapters of the Position Paper; Authors agreed.
- Prepare Questionnaire to EAC Members.
- Design display boxes for key items, law, data distribution, sea level curves, etc.
- Establish links with EMODNET, archival data holders, INQUA, IGCP, etc.
- Develop links with offshore industries, and sports diving associations, and European Scientific Diving Panel.

