



CRUCIAL DECISIONS WHEN PLANNING FOR OFFSHORE WIND FARMS UNDER THE ECOSYSTEM-BASED APPROACH

JANICA BORG

**SENIOR MARINE CONSERVATION AND SPATIAL
PLANNING COORDINATOR**

WWF



**SUSTAINABLE
ENERGY WEEK**

An initiative
of the  European
Commission

BEYOND THE CRISIS: CLEAN ENERGY FOR GREEN RECOVERY AND GROWTH

22-26 JUNE 2020

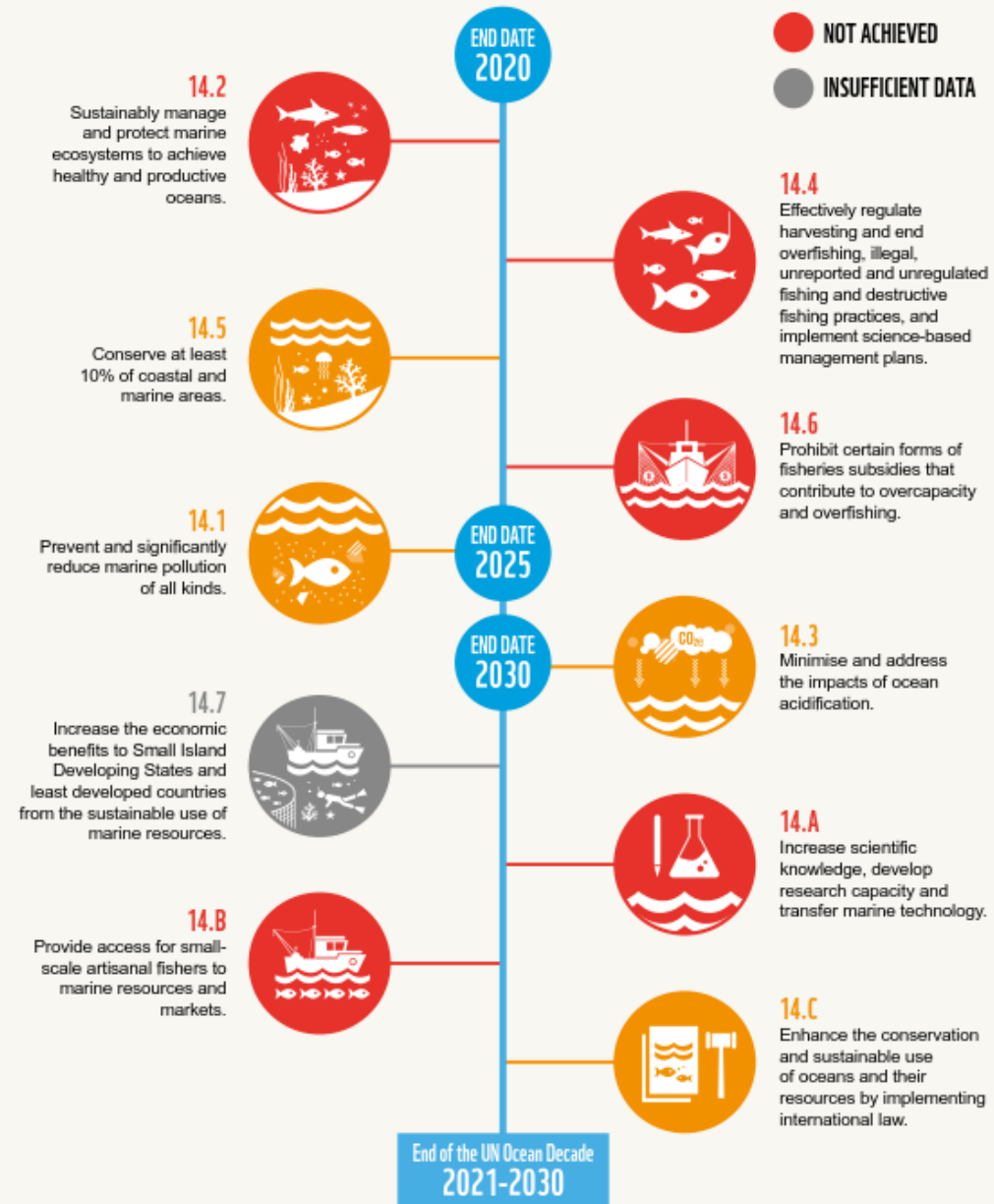
#EUSEW2020

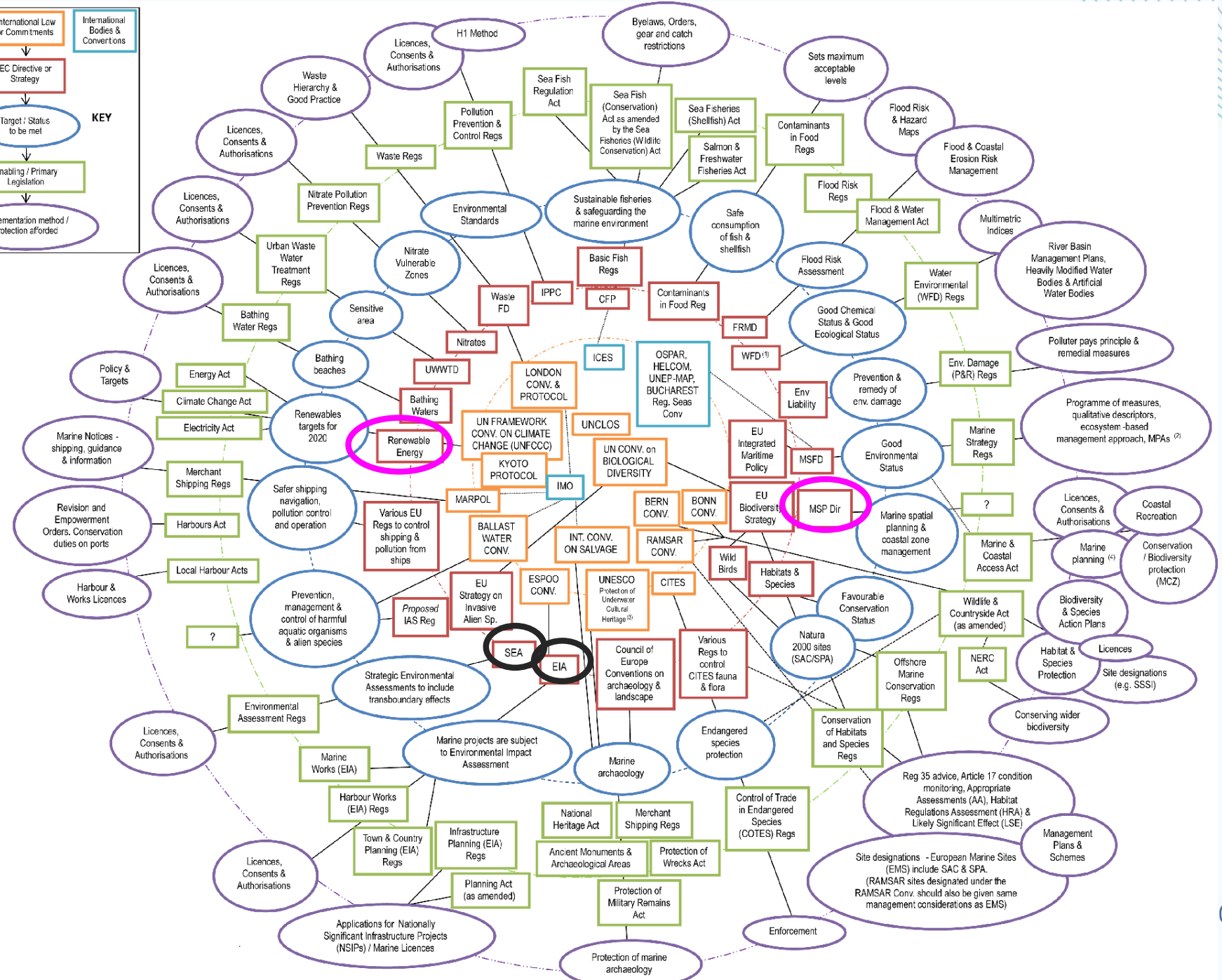
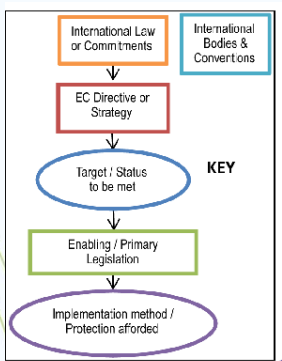


None of the SDG 14 targets for 2020 have been achieved

SECURING OUR OCEAN'S FUTURE STARTS NOW

THE 10 TARGETS OF SDG14





22-26 JUNE 2020
 OVERY AND GROWTH
 #EUSEW2020



Offshore wind farms and marine protection in the North Sea

The climate emergency and biodiversity loss are today's greatest threats to people and nature. A transformational change in how we use ocean and planetary resources is required now if the world is to achieve the goals and aspirations, set by the Paris Agreement¹ and the United Nations Agenda 2030², for a better future for all. We must urgently steer towards a truly sustainable, decarbonised and circular Blue Economy and a general shift in the consumption of energy towards energy saving consumer patterns.

¹ <https://unfccc.int/process-and-meetings/the-paris-agreement/the-paris-agreement>
² <https://www.un.org/sustainabledevelopment/sustainable-development-goals>



Achieving ecosystem-based marine spatial plans

WWF's vision is to ensure an ecosystem-based approach to marine spatial plans adopted by European Union (EU) Member States in all EU marine waters. This safeguards important ecological areas, reduces negative pressure on the marine ecosystem as a whole and ensures that there is space for nature in the marine spatial plans. This approach must apply within and across EU Member States' borders, delivering effective nature conservation and securing ocean resilience in light of the impacts of climate change, as well as supporting a Sustainable Blue Economy.

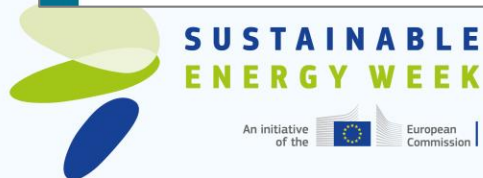
https://d2ouvy59p0dg6k.cloudfront.net/downloads/wwf_position_paper_ecosystem_based_approach_in_marine_spatial_plans_feb2020.pdf

<https://wwf.be/assets/RAPP-ORT-POLICY/OCEANS/UK/2020-Offshore-wind-farms-and-marine-protection-in-the-North-Sea-WWF.pdf>

22-26 JUNE 2020

BEYOND THE CRISIS: CLEAN ENERGY FOR GREEN RECOVERY AND GROWTH

#EUSEW2020



An initiative of the European Commission



- Strengthen environmental resilience through an affective **MPA network** that is fully implemented
- Strategic and smart **site selection** (EBA) for all activities at sea
- **Precautionary principle**

- **Cumulative impact assessments** for the entire lifespan of new activities
- **Cross-border consultation**
- Independent **monitoring** of activities
- Best-proven **technology**



SUSTAINABLE ENERGY WEEK

An initiative of the  European Commission



Achieving ecosystem marine spa

WWF's vision is to ensure an e spatial plans adopted by Europe EU marine waters. This safeg reduces negative pressure on th ensures that there is space for na approach must apply within and delivering effective nature conse in light of the impacts of clima Sustainable Blue Economy.



Offshore wind farms and marine protection in the North Sea

The climate emergency and biodiversity loss are today's greatest threats to people and nature. A transformational change in how we use ocean and planetary resources is required now if the world is to achieve the goals and aspirations, set by the Paris Agreement¹ and the United Nations Agenda 2030², for a better future for all. We must urgently steer towards a truly sustainable, decarbonised and circular Blue Economy and a general shift in the consumption of energy towards energy saving consumer patterns.

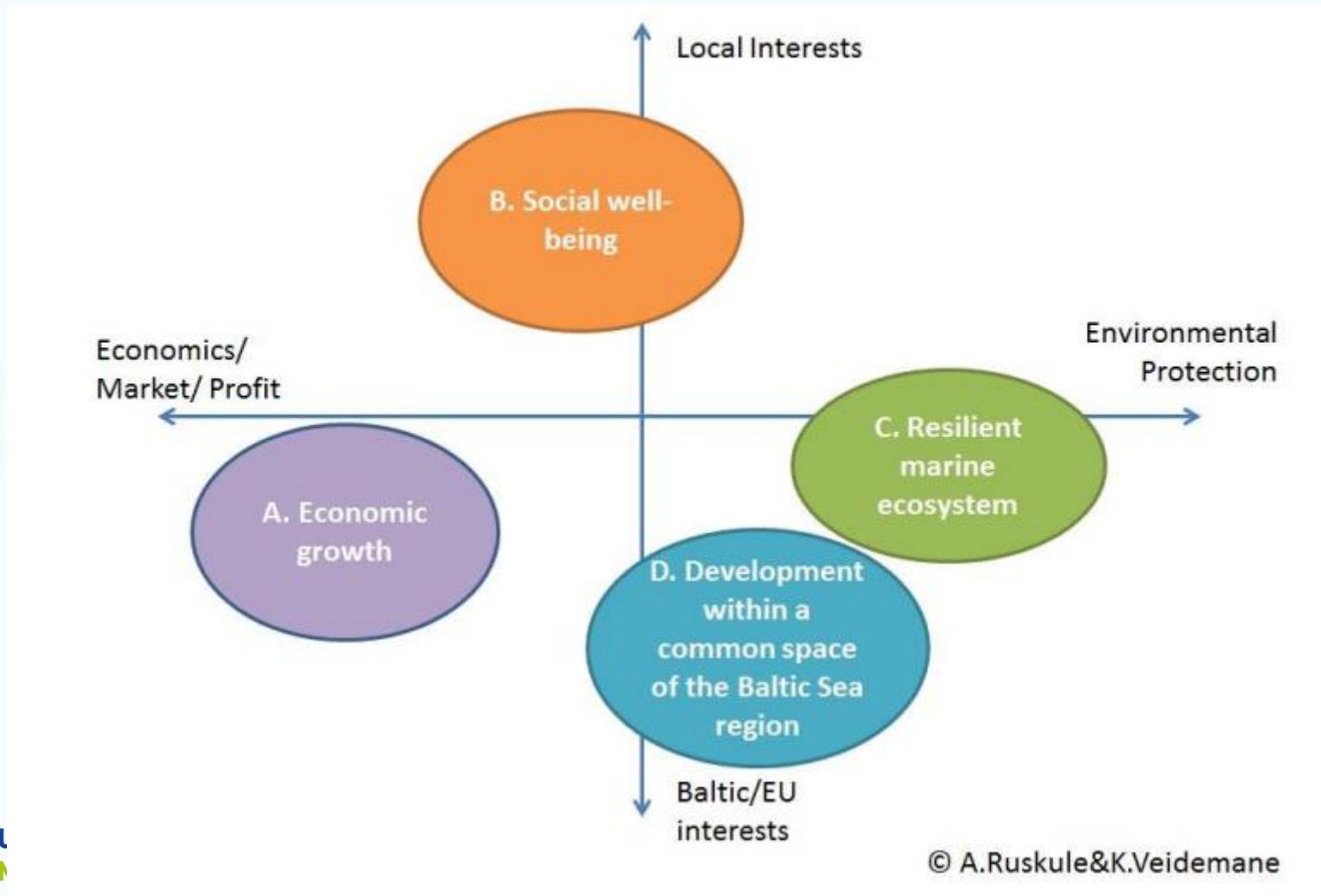
¹ <https://unfccc.int/process-and-meetings/the-paris-agreement/the-paris-agreement>
² <https://www.un.org/sustainabledevelopment/sustainable-development-goals>

22-26 JUNE 2020

BEYOND THE CRISIS: CLEAN ENERGY FOR GREEN RECOVERY AND GROWTH

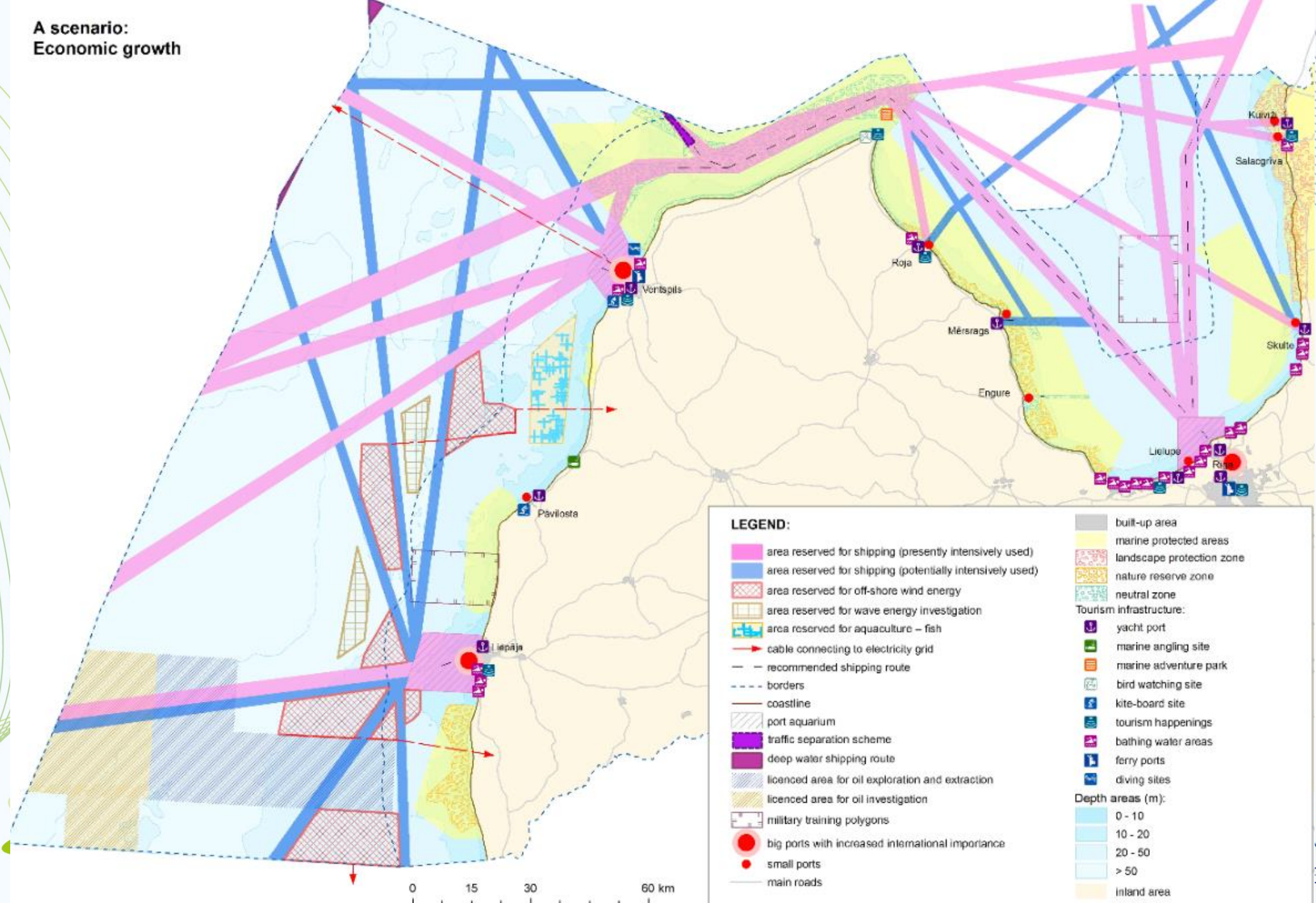
#EUSEW2020

LATVIAN MSP: 4 SCENARIOS



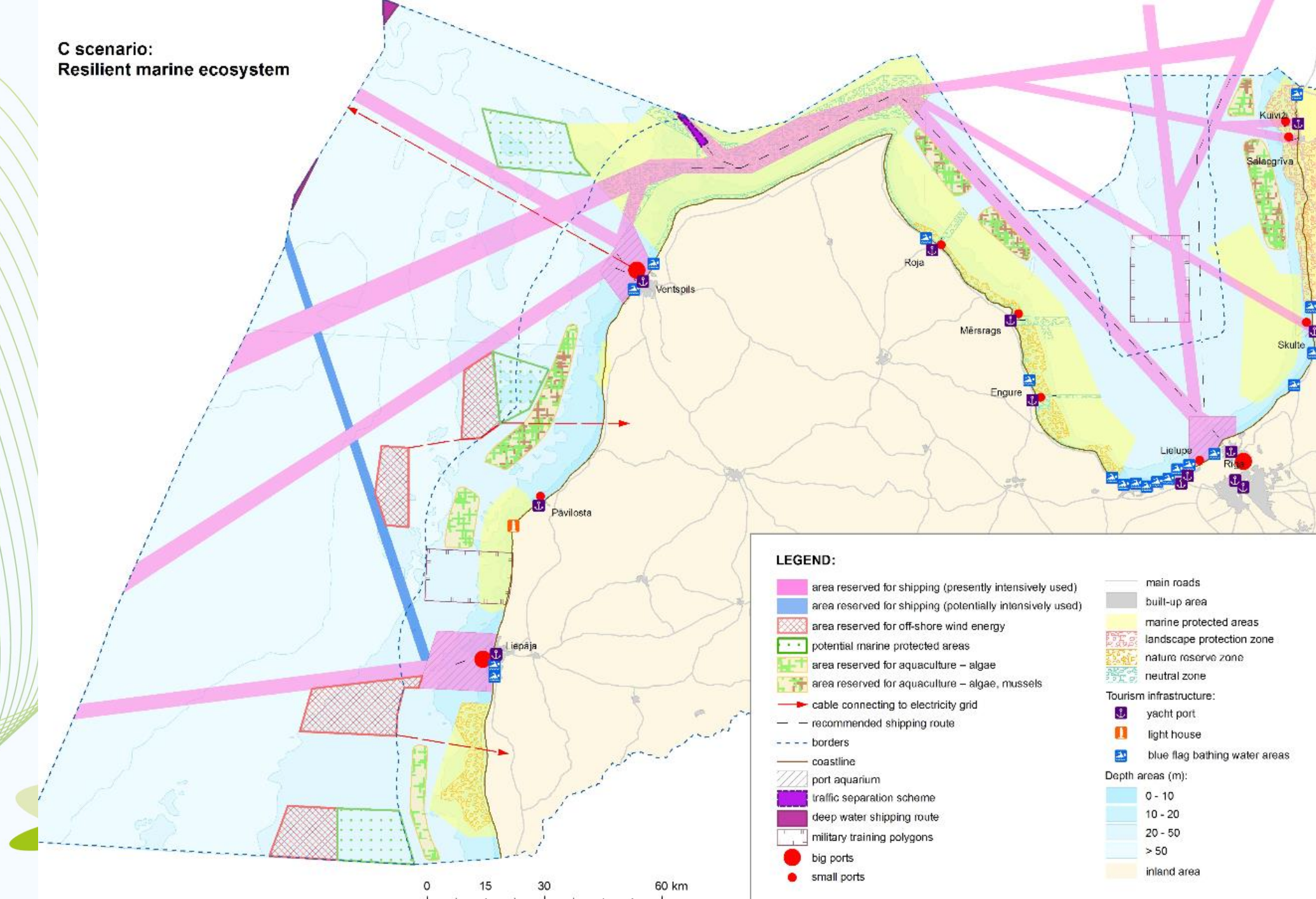
S U
E M

**A scenario:
Economic growth**

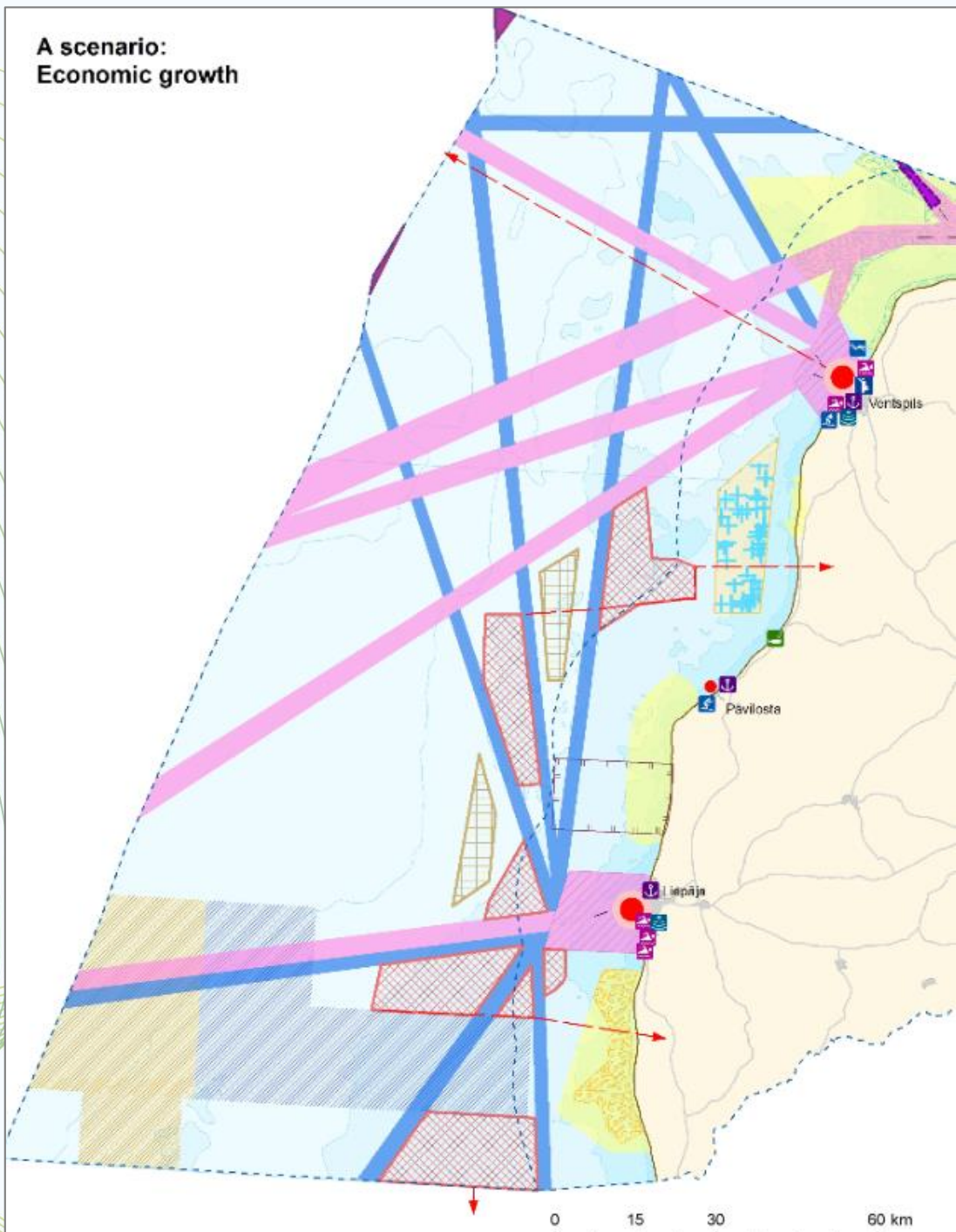


JUNE 2020
ND GROWTH
USEW2020

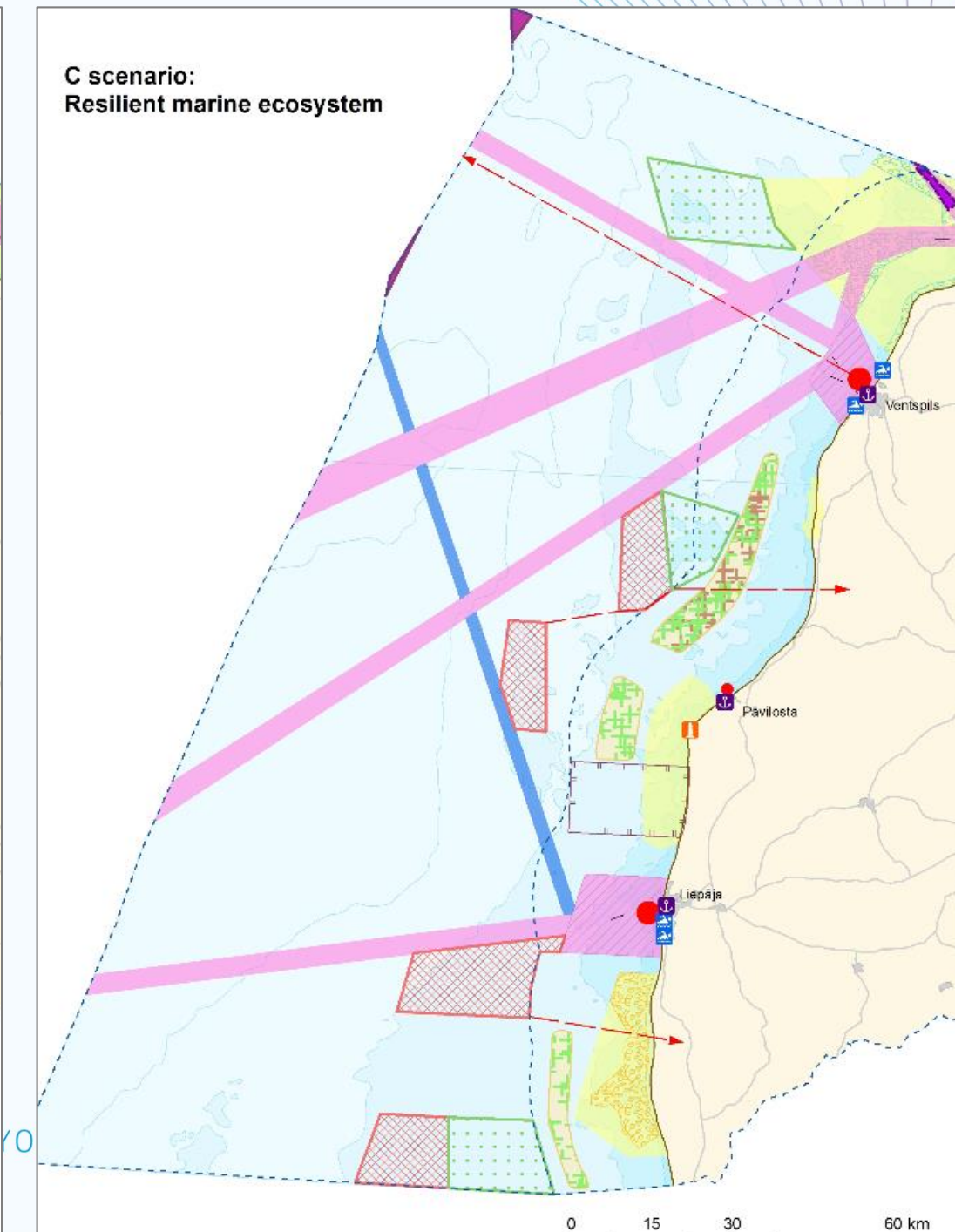
**C scenario:
Resilient marine ecosystem**



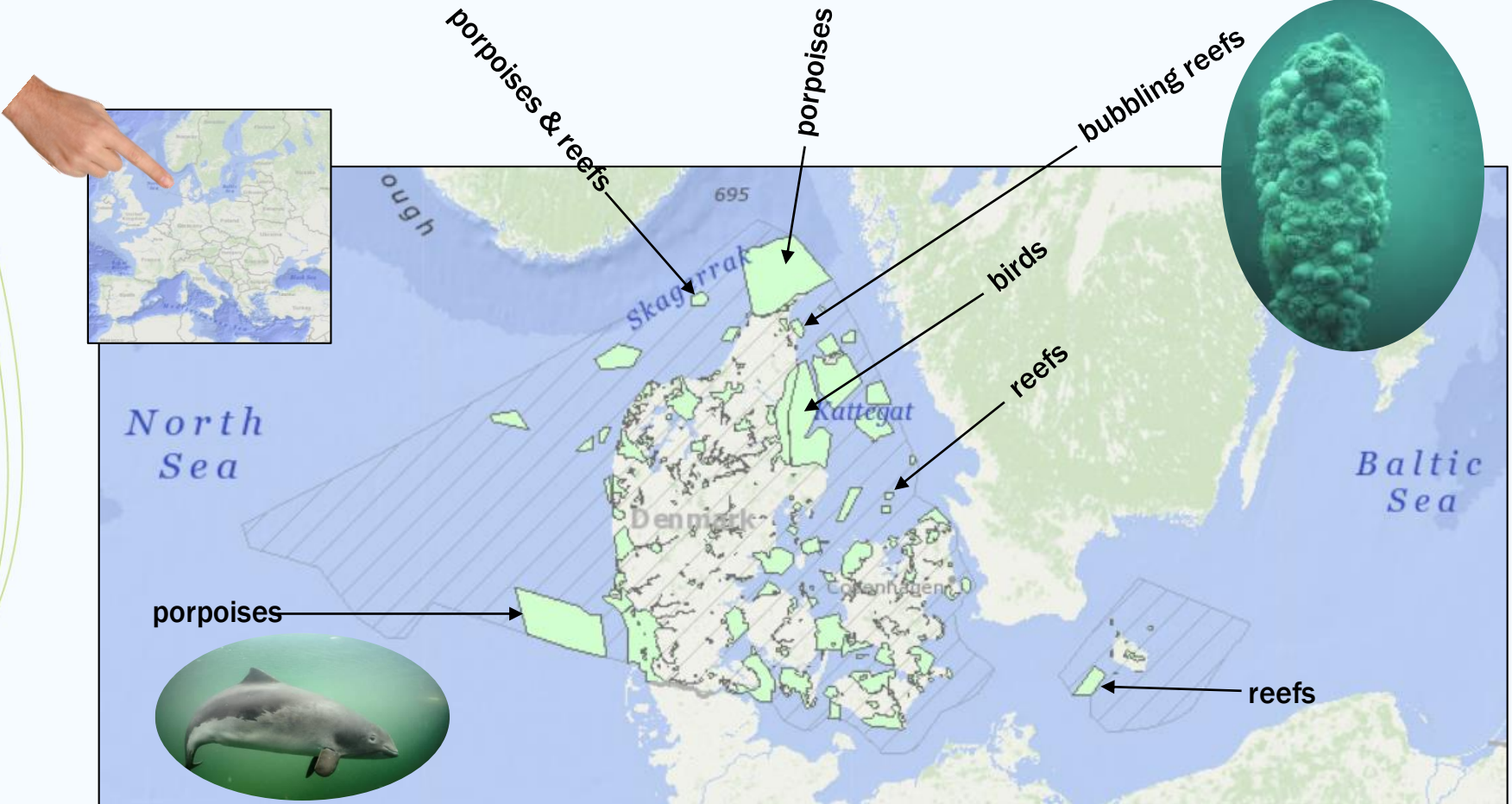
**A scenario:
Economic growth**



**C scenario:
Resilient marine ecosystem**



Danish waters: bottom trawling and vulnerable habitats



**SUSTAINABLE
ENERGY WEEK**

An initiative of the  European Commission

BEYOND THE CRISIS: CLEAN ENERGY FOR GREEN RECOVERY AND GROWTH

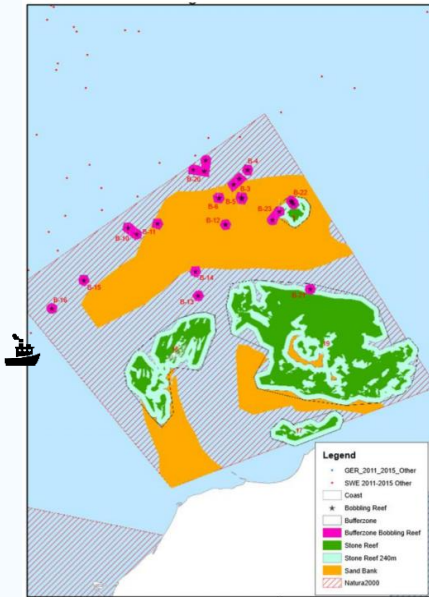
22-26 JUNE 2020

#EUSEW2020

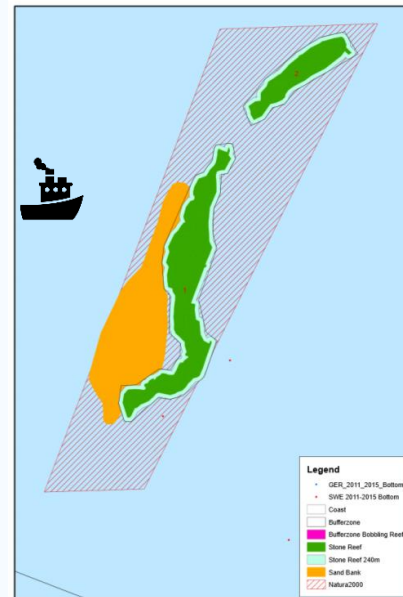
THE RESULT

Minimum effort model:

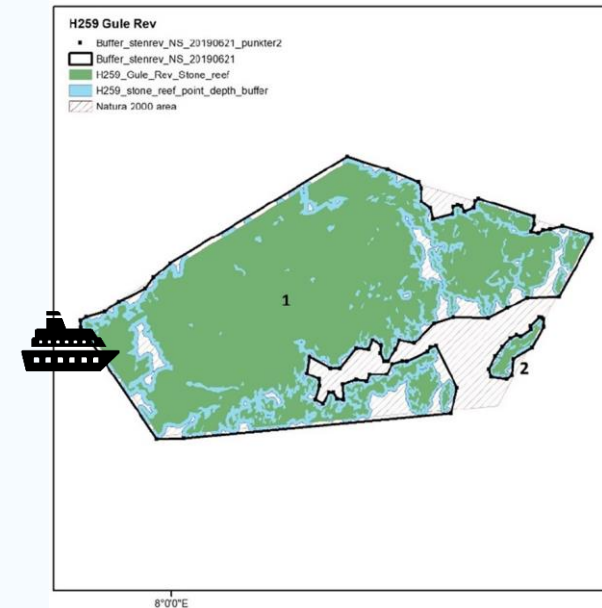
While 18% is protected, only 2% is protected against bottom trawling, edge effects, etc.



78%
UNPROTECTED



76%
UNPROTECTED



NORTHSEANEXT



SUSTAINABLE
ENERGY WEEK

An initiative of the  European Commission

BEYOND THE CRISIS: CLEAN ENERGY FOR GREEN RECOVERY AND GROWTH

22-26 JUNE 2020

#EUSEW2020

AS WE PLAN FOR FUTURE SEA USE...

- “New nature” cannot replace existing nature, and should be treated as a added value.
- Marine habitats and species perform certain functions in the ecosystem, and while offshore windfarms can create new habitats during their operational phase, this does not replace the habitats lost during the construction phase.
- Compensation schemes to be avoided.



WWF RECOMMENDS

- Offshore windfarm to be kept outside MPAs and most sensitive areas.
- In planning for offshore windfarms, ensure that both spatial and temporal environmental factors are accounted for.
- Robust and appropriate independent monitoring of impacts.
- Invest in new environmentally friendly technologies and energy saving schemes.

WWF RECOMMENDS (CONT)

- **Spatial consideration:**

- Always outside MPAs and other sensitive areas
- Avoid busiest bird migration routes
- Avoid fish spawning and nursery grounds
- Avoid adding to already existing other human pressures in a heavily used area

- **Temporal consideration:**

- No construction during migration season (birds and cetaceans)
- No construction during fish spawning season (UW visibility)
- Avoid construction during times of other intense areas human pressures (seasonal)



Thank you!

@janica_borg

jborg@wwf.eu

22-26 JUNE 2020
GREEN RECOVERY AND GROWTH
#EUSEW2020

 EUSEW.EU
 EUENERGYWEEK
 @EUENERGYWEEK



22-26 JUNE 2020
BEYOND THE CRISIS: CLEAN ENERGY FOR GREEN RECOVERY AND GROWTH
#EUSEW2020