



EMODnet



European Marine
Observation and
Data Network

INSPIRE compliance (meta)data URL's & Quality of Service

11th EMODnet Technical Working Group
26-27 September 2022

Tim Collart

EMODnet Secretariat
emodnet.ec.europa.eu

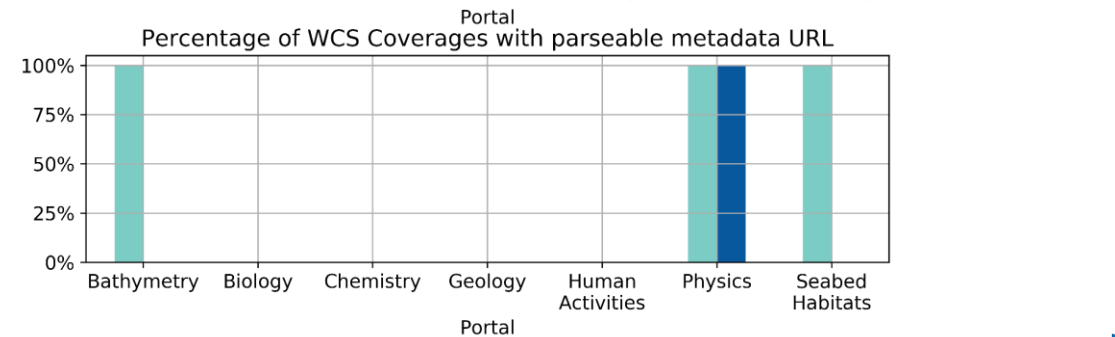
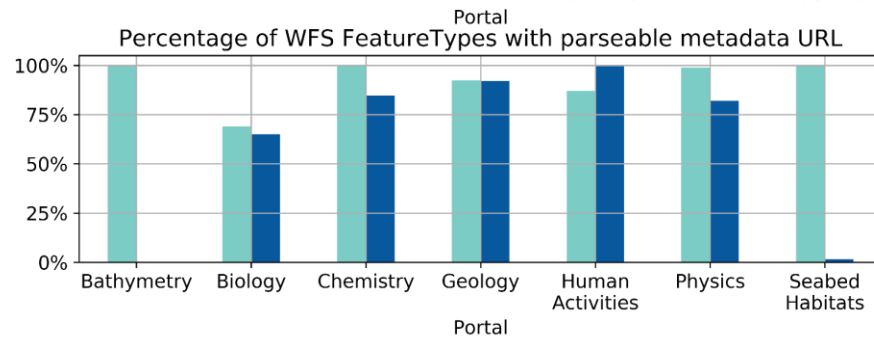
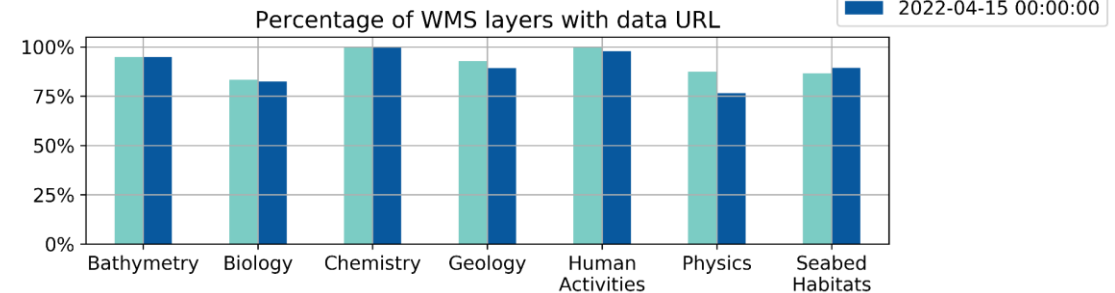
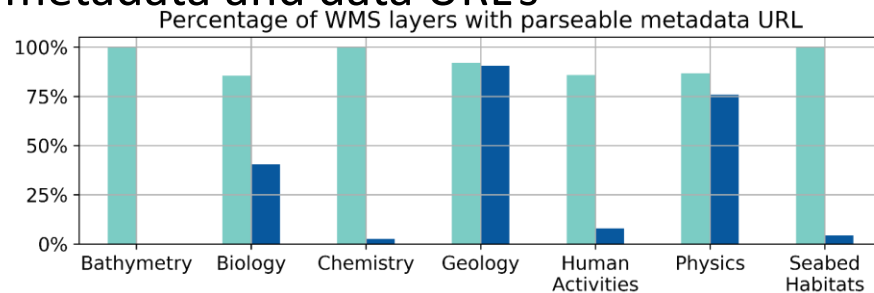
INSPIRE Metadata & data URL's in Service GetCapabilities

- Followed up in JIRA

- Service metadata URL's

Date	Bathymetry	Biology	Chemistry	Geology	Human Activities	Physics	Seabed Habitats
31/08/2021	5/5	5/5	8/10	9/12	1/3	4/7	6/6
19/04/2021	0/5	5/5	0/10	12/12	3/3	4/7	0/6

- Dataset metadata and data URL's



INSPIRE Metadata & data URL's in Service GetCapabilities

- Followed up in JIRA
- Service metadata URL's

Date	Bathymetry	Biology	Chemistry	Geology	Human Activities	Physics	Seabed Habitats
31/08/2021	5/5	5/5	8/10	9/12	1/3	4/7	6/6
19/04/2021	0/5	5/5	0/10	12/12	3/3	4/7	0/6

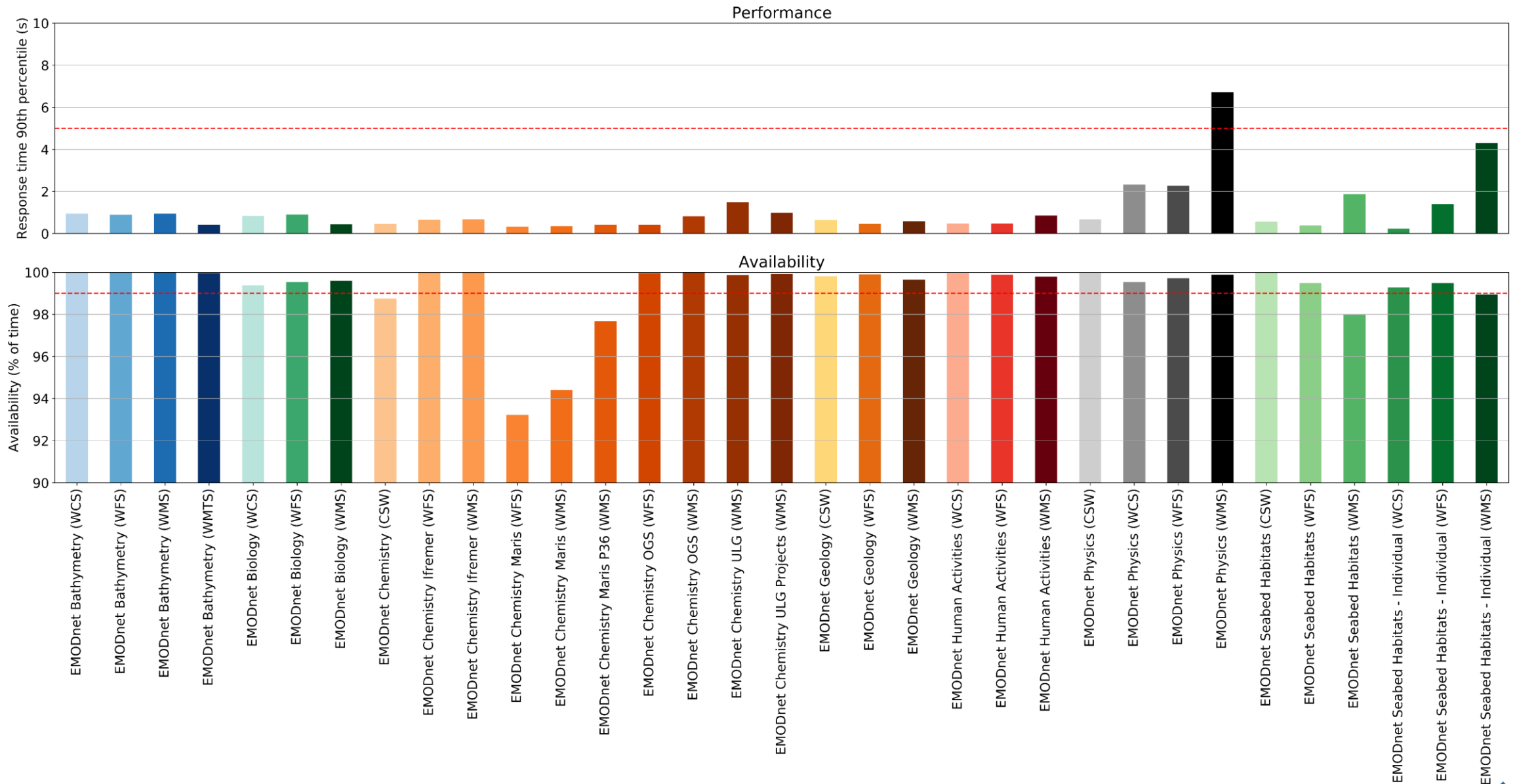
- Dataset metadata and data URL's
- Common issues Bathymetry, Chemistry, Seabed Habitats:
 - **Issue:** GeoNetwork (Sextant/ICES) links of the form **{DOMAIN}/geonetwork/srv/eng/xml.metadata.get?uuid={UUID}** redirect to login page of the GeoNetwork > No parseable XML
 - **Potential solutions:**
 - Reformat the URL's to GeoNetwork API request: **{DOMAIN}/geonetwork/srv/api/records/{UUID}/formatters/xml**
 - Reformat the URL's to CSW request:
{DOMAIN}/geonetwork/srv/eng/csw?service=CSW&version=2.0.2&request=GetRecordById&elementsetname=full&outputschema=http://www.isotc211.org/2005/gmd&id={UUID}

INSPIRE Quality of Service Monitoring

- INSPIRE sets a number of Quality of Service requirements for web services. This includes requirement for:
 - Performance: Response time during normal operation (90th percentile)
 - Capacity: Number of simultaneous service requests
 - Availability: The percentage of time the service is available
- Monitoring web services with GeoHealthCheck (monitor.emodnet.eu)
 - Currently:
 - Monitor performance and availability for GetCapabilities operations & compare with INSPIRE requirements
 - Followed up in JIRA:

INSPIRE Quality of Service Monitoring

QoS stats for Q1 of 2022



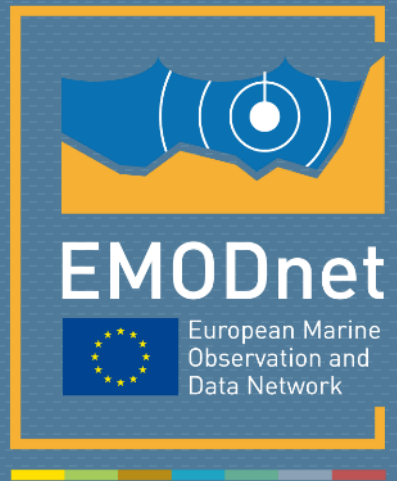
OGC services

INSPIRE Quality of Service Monitoring

- INSPIRE sets a number of Quality of Service requirements for web services. This includes requirement for:
 - Performance: Response time during normal operation (90th percentile)
 - Capacity: Number of simultaneous service requests
 - Availability: The percentage of time the service is available
- Monitoring web services with GeoHealthCheck (monitor.emodnet.eu)
 - Currently:
 - Monitor performance and availability for GetCapabilities operations & compare with INSPIRE requirements
 - Followed up in JIRA:
 - Planned (but ON HOLD till after centralization):
 - Implement INSPIRE normalized testing procedures as plugins to GeoHealthCheck:
 - Monitor performance, capacity and availability for different operations:
 - GetCapabilities
 - GetMap/GetFeature/GetCoverage
 - DescribeFeatureType/DescribeCoverage
 - More information and progress tracked in JIRA:

Monitoring of Metadata & Services with the INSPIRE Validator

- Need for prioritization of INSPIRE requirements that are fit-for-purpose to EMODnet
- Need for better documentation of INSPIRE validator output (development ON HOLD for Centralization)



emodnet.ec.europa.eu

Your gateway to marine data in Europe

