



# Waste management fishing vessels

Arie Nijdam

Association of Port Reception Facilities in the Netherlands (VOMS)

18-02-2020

Workshop DG Mare

1





# Introduction of the VOMS

- Organisation of the Dutch collection and treatment companies for ships' waste
- Collection and treatment of maritime waste Marpol Annex I, II, IV, V and VI
- Collected volume 600.000 m<sup>3</sup> yearly
- Collection in all ports in the Netherlands
- Collection of waste from seagoing ships, inland ships, fishing vessels and offshore
- Collection with barges and trucks
- Member of





# Members of the VOMS





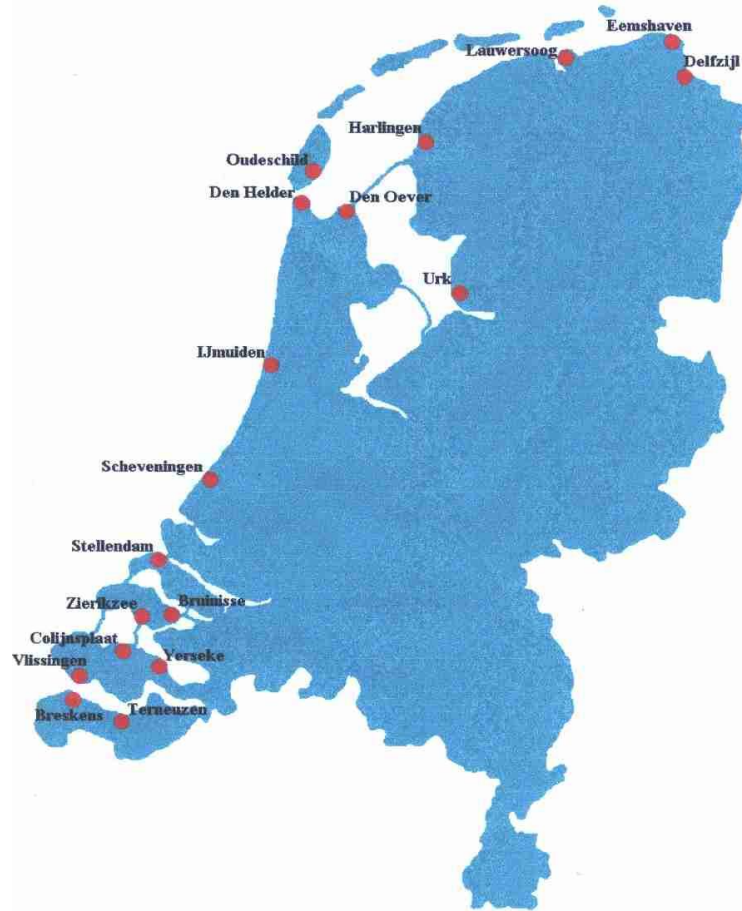


## Collection fishing vessels

- Collection in mostly small ports
- Small quantities
- Small number of ships
- Since 1995 an existing system for oily waste
- Seperate Waste Management Plan for fishing vessels (VISHAP)
- Fishing for litter project



## Locations collection fishing vessels



18-02-2020

Workshop DG Mare



## Categories of waste fishing vessels

	Annex I <u>Bilgewater</u> and used oil
	Annex V Hazardous waste
	Annex V Garbage
	Fishing gear
	Passively fished waste





## Categories of waste fishing vessels

### Waste categorie

Bilgewater / used oil

Hazardous waste

Garbage

Fishing gear

Passively fished waste

### Marpol Annex

I

V

V

V



## Categories of waste fishing vessels

### Definitions in MARPOL

**Fishing gear** means any physical device or part thereof or combination of items that may be placed on or in the water or on the sea-bed with the intended purpose of capturing, or controlling for subsequent capture or harvesting, marine or fresh water organisms.

**Garbage** means all kinds of food wastes, domestic wastes and operational wastes, all plastics, cargo residues, cooking oil, fishing gear, and animal carcasses generated during the normal operation of the ship and liable to be disposed of continuously or periodically except those substances which are defined or listed in other Annexes to the present Convention. Garbage does not include fresh fish and parts thereof generated as a result of fishing activities undertaken during the voyage, or as a result of aquaculture activities which involve the transport of fish including shellfish for placement in the aquaculture facility and the transport of harvested fish including shellfish from such facilities to shore for processing.





## Why separate collection of waste fishing vessels

Bilgewater / used oil:	Collection by tanktruck / tankship
Hazardous waste:	Special precautions and facilities necessary
Garbage:	No special precautions and facilities necessary
Fishing gear:	Logistics and recycling possibilities
Passively fished waste:	Different financing



## Combined collection

	Waste categories	Fishing vessels	<u>Seaships</u>	Inland ships
	Annex I <u>Bilgewater</u> and used oil	x	x	X
	Annex V Hazardous waste	X	x	X
	Annex V Garbage	X	x	x
	Fishing gear	X		
	Passively fished waste	X		



## Dutch subscription system for oily and hazardous waste

- Since 1995 in operation
- Organized by the fishing industry and port reception facilities (SFAV)
- Collection in all fishing ports
- Fixed annual subscription fee (295 – 1495 Euro) based on engine power
- Volume collected Annex I bilgewater/used oil: 1.186 m<sup>3</sup>
- Volume Annex V hazardous waste: 110 tonnes



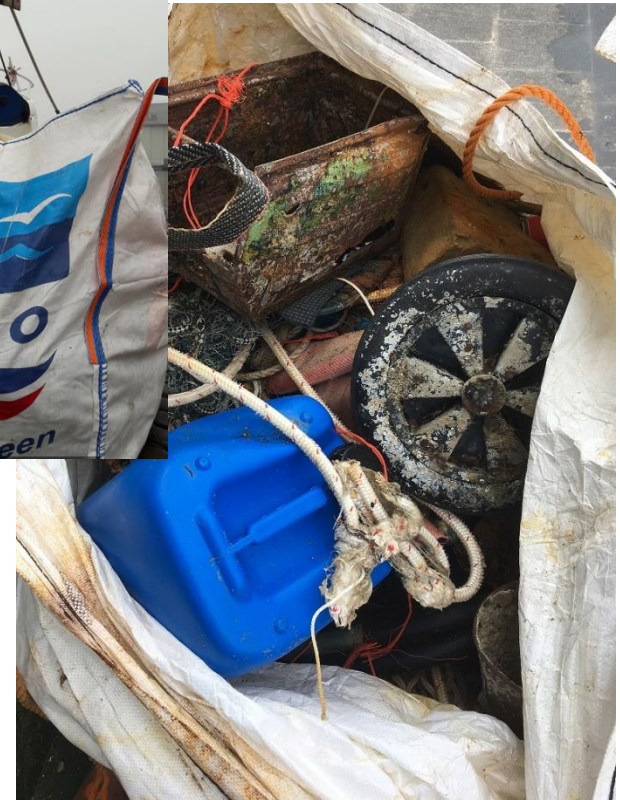


## Garbage collection in the Netherlands

- The collection of household waste is organised by the ports
- Indirect fee of 7,50 Euro each port call



## Separate collection passively fished waste and fishing gear



18-02-2020

Workshop DG Mare

13





## Passively fished waste: what sort of waste?



18-02-2020

Workshop DG Mare

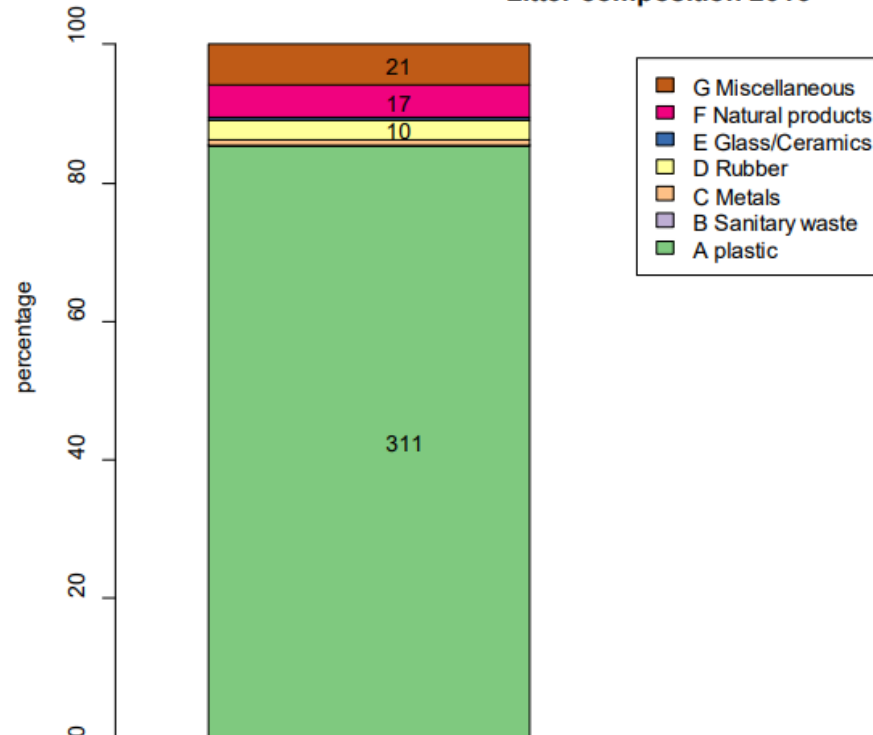
14





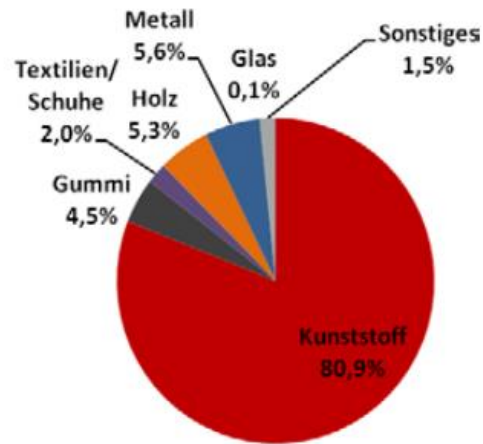
## Passively fished waste: what sort of waste?

Litter composition 2016

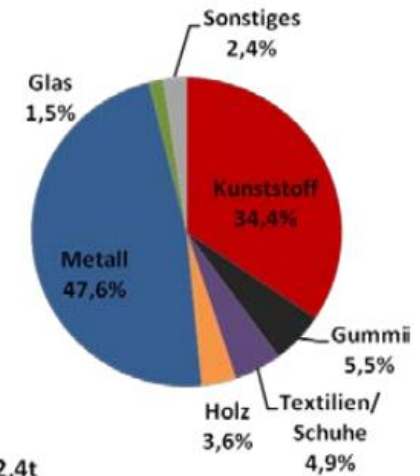




## Passively fished waste: what sort of waste?



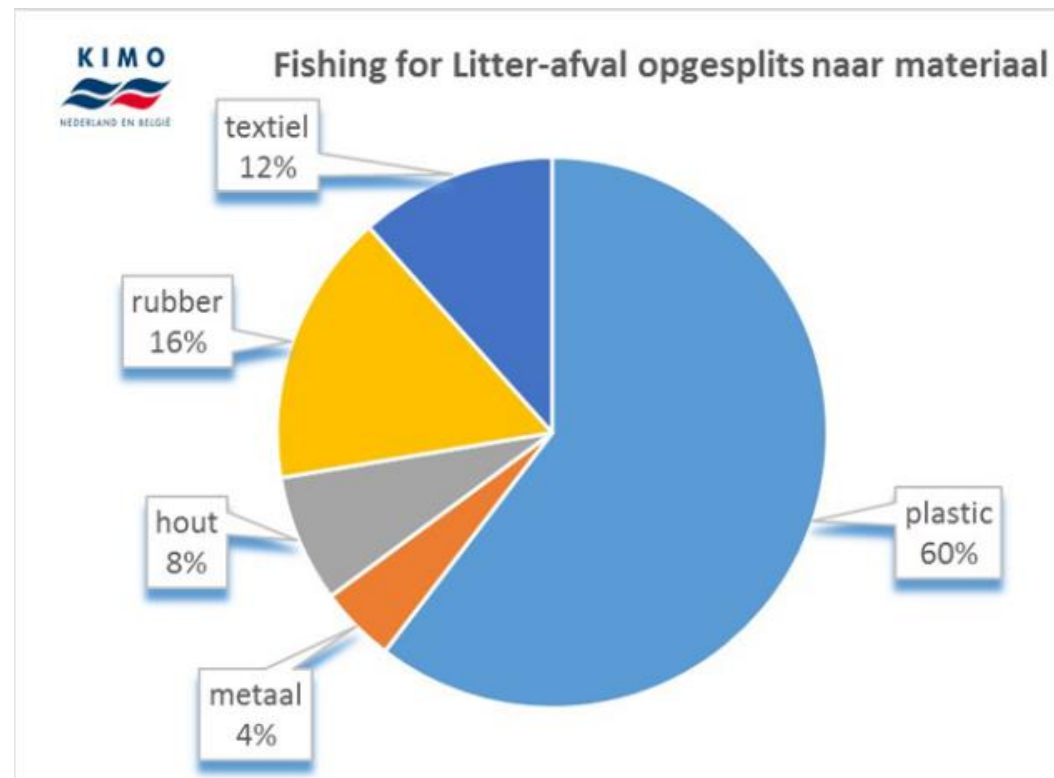
Nordsee: N=12,6t



Ostsee: N=2,4t



## Passively fished waste: what sort of waste?







## Separation and recycling



18-02-2020

Workshop DG Mare

18



## Fishing nets on its way for recycling



18-02-2020

Workshop DG Mare

19