



HYDROGRAPHIC OFFICES

& CISE



Shom & CISE

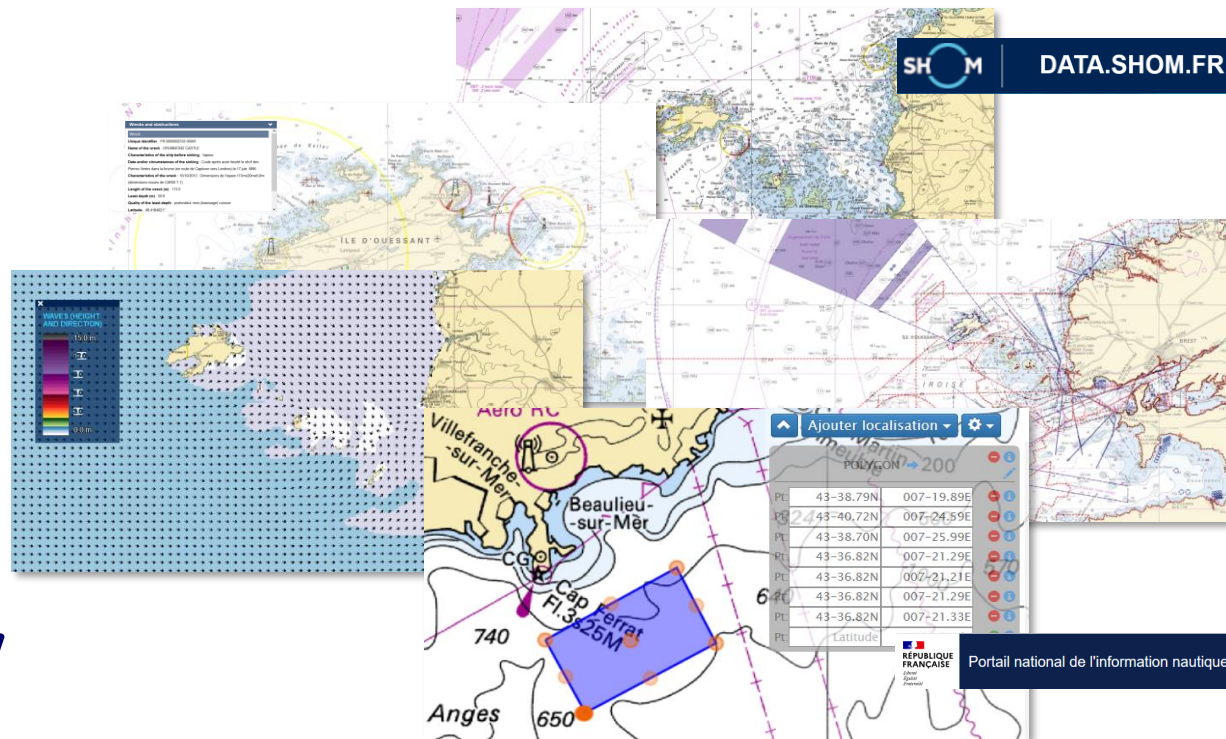
- **Involvement in some EU projects and proposal**
- **Involvement in the national CISE WG chaired by SGMer, with the French administrations involved in maritime safety/surveillance**
- **Identified as a Participant in the Cooperation Agreement signed by SGMer for France**
- **Opportunity to promote and share official and enforceable data and services produced by Shom**
- **Opportunity to work closer with european administrations (EMSA, FRONTEX, EFCA) and French actors (SGMer, Coast Guards, Customs, Maritimes Affairs, Navy, ...) of the maritime safety/surveillance**



Reference & Interoperable datasets/services of interest

- ✓ Marine charts
- ✓ Wrecks/Obstructions
- ✓ Marks at Sea
- ✓ Maritime boundaries
- ✓ Regulation - Navigation
- ✓ Oceanographic forecasts
- ✓ Navigational warnings

⇒ *Necessary information to get an
Integrated picture of the situation*



Work in progress

- **Shom's connection to the French Node installed and operational**
- **Limitations due to the standards used (WMS raster/vector/NetCDF, WFS)**
- **Close work with the Joint Research Center, in liaison with SGMer and French administrations**
- **Good progress expected with the next version of CISE**
- **Awareness on the funding opportunities**