




seabed mining

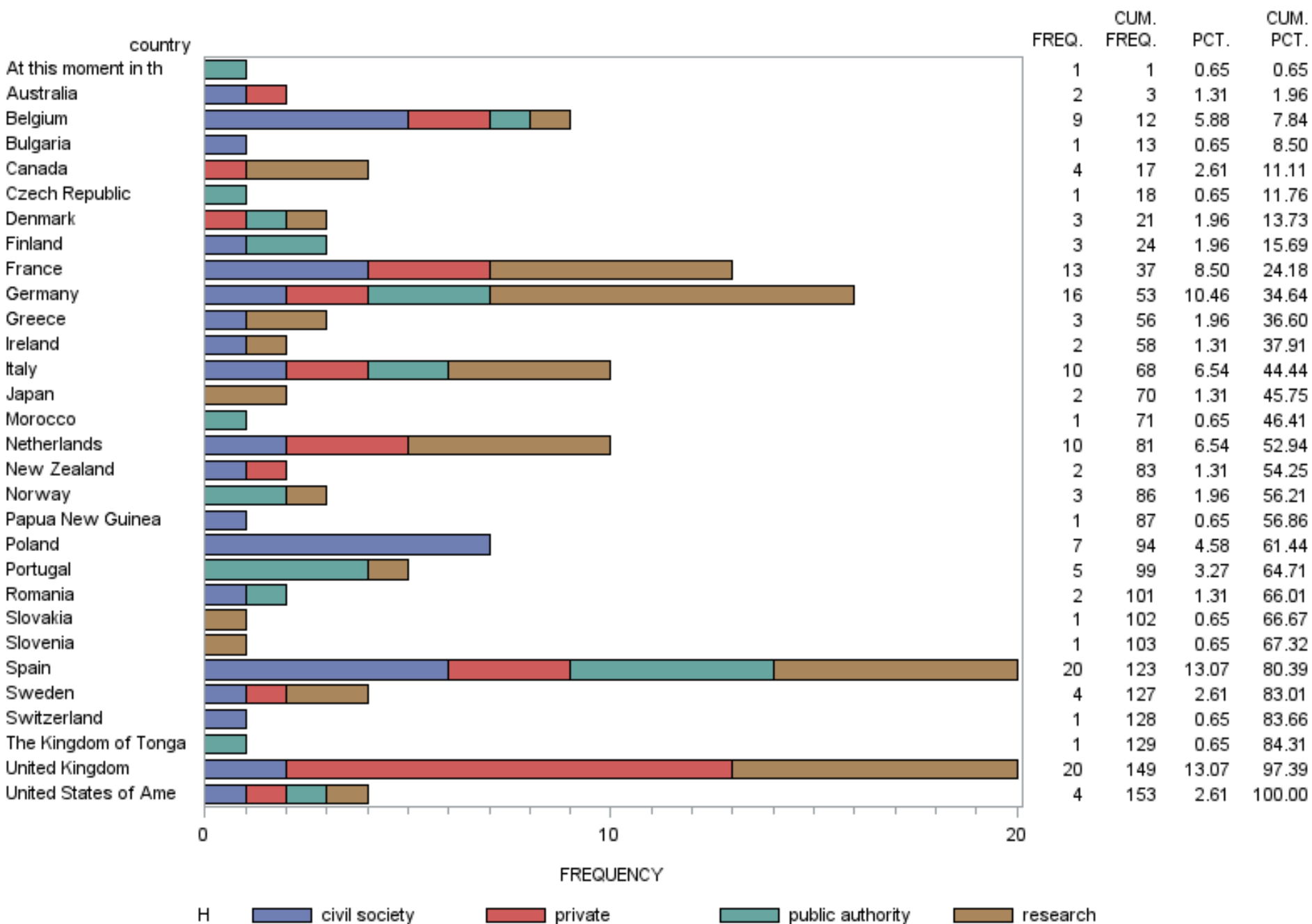
consultation and study



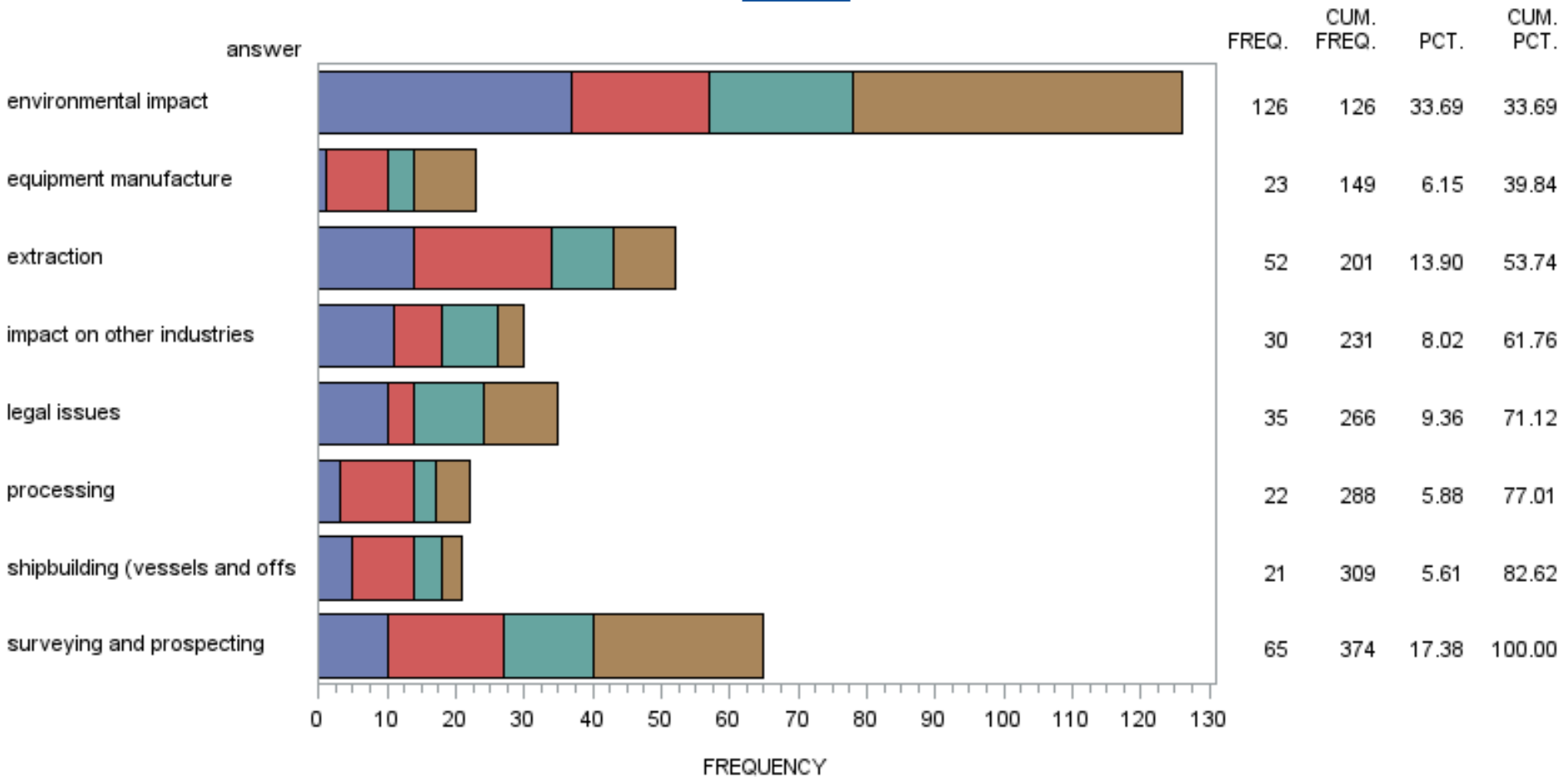
If seabed mining becomes legally, technologically and economically feasible, I believe we should ask ourselves how involved Europe should be

Maria Damanaki, European Commissioner for Maritime Affairs and Fisheries

mining	consultation to be completed 16 June	study to finish 28 August
aggregates	yes	
shallow-water mining	yes	
polymetallic sulphides	yes	yes
manganese nodules	yes	yes
cobalt-rich crusts	yes	yes

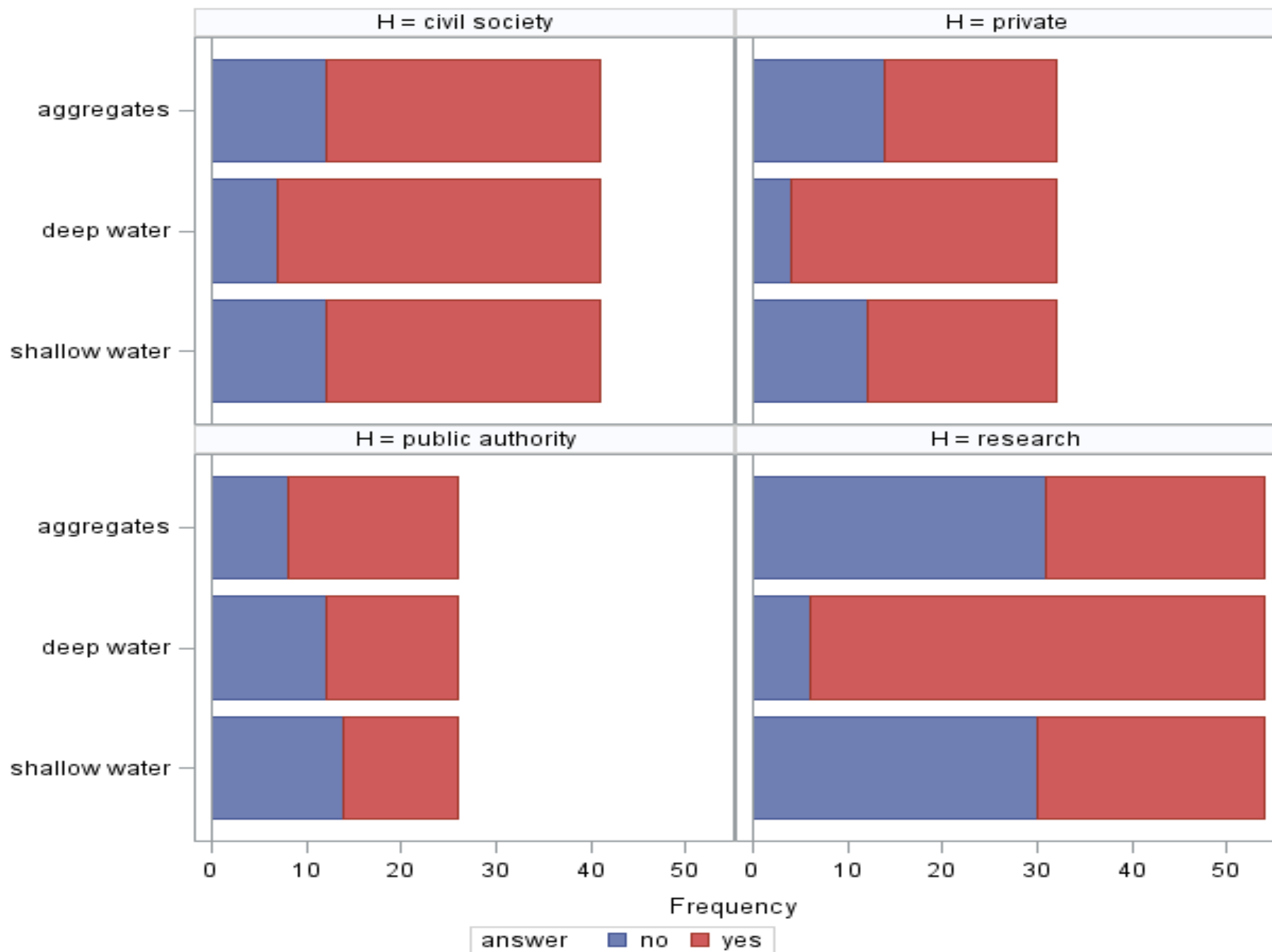


main interest



H ■ civil society ■ private ■ public authority ■ research

type





- technology analysis
- legal analysis
- environmental analysis

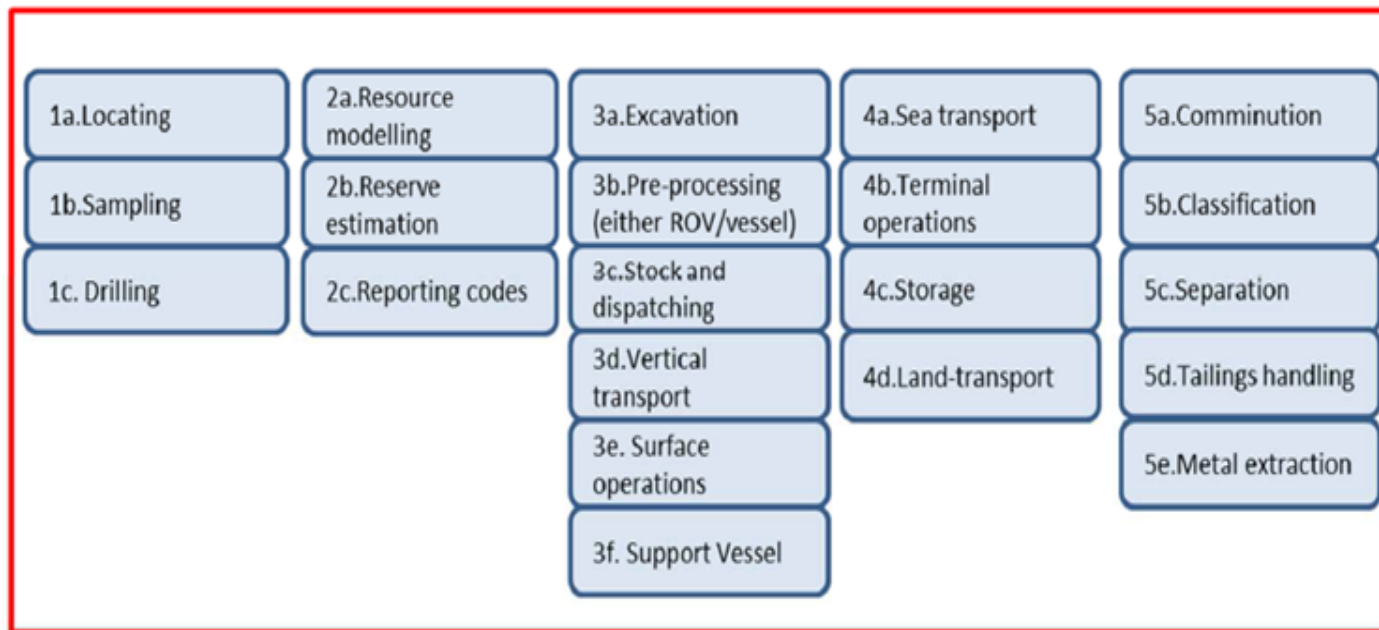
Framework conditions

Research, Land reclamation, Licensing, Regulatory framework, Control of environmental impacts and assessment, financing, employment, monitoring

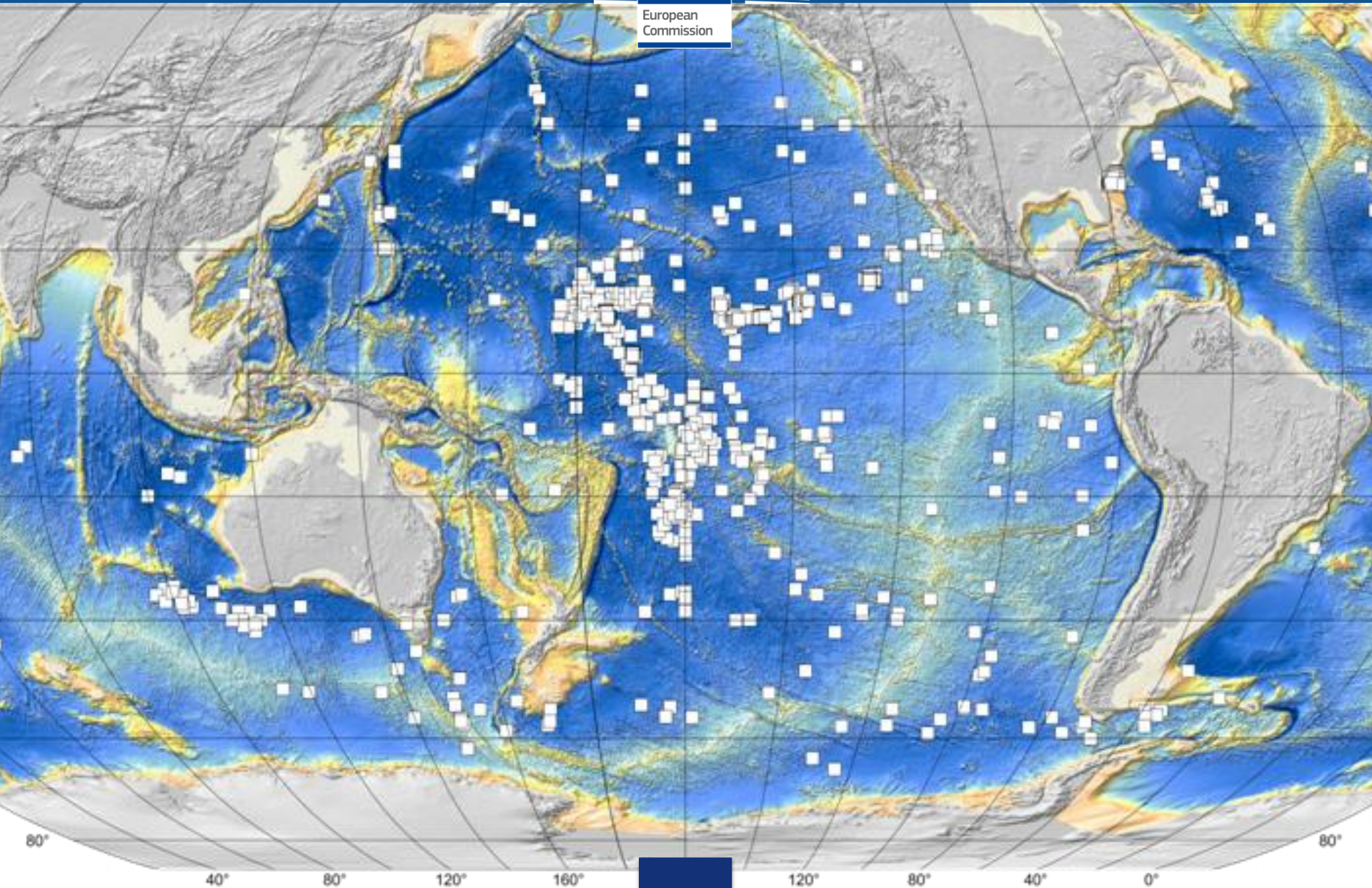
Value chain phases



Activities within each phase



legal analysis

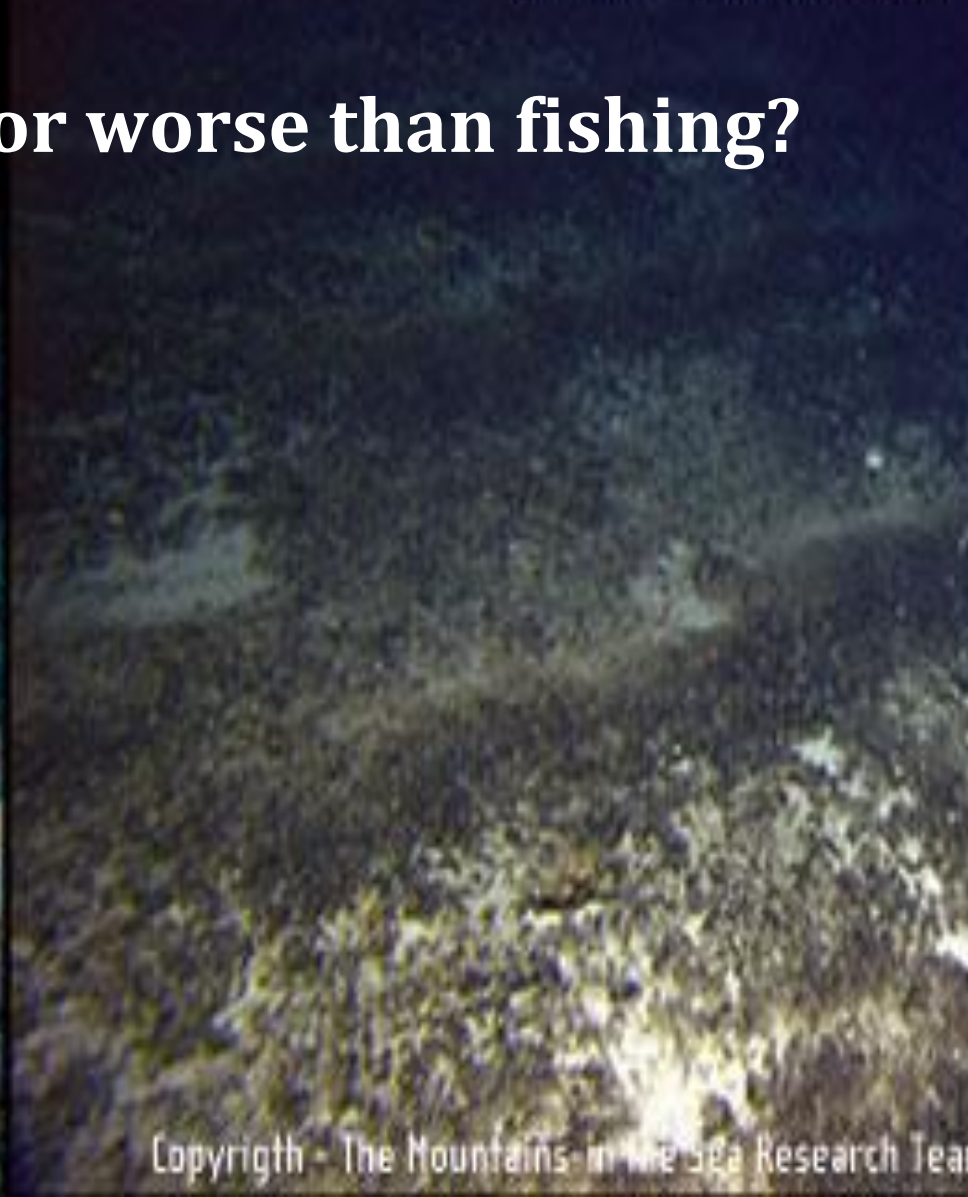


Before trawling



Copyright - A. Freiwald

After trawling



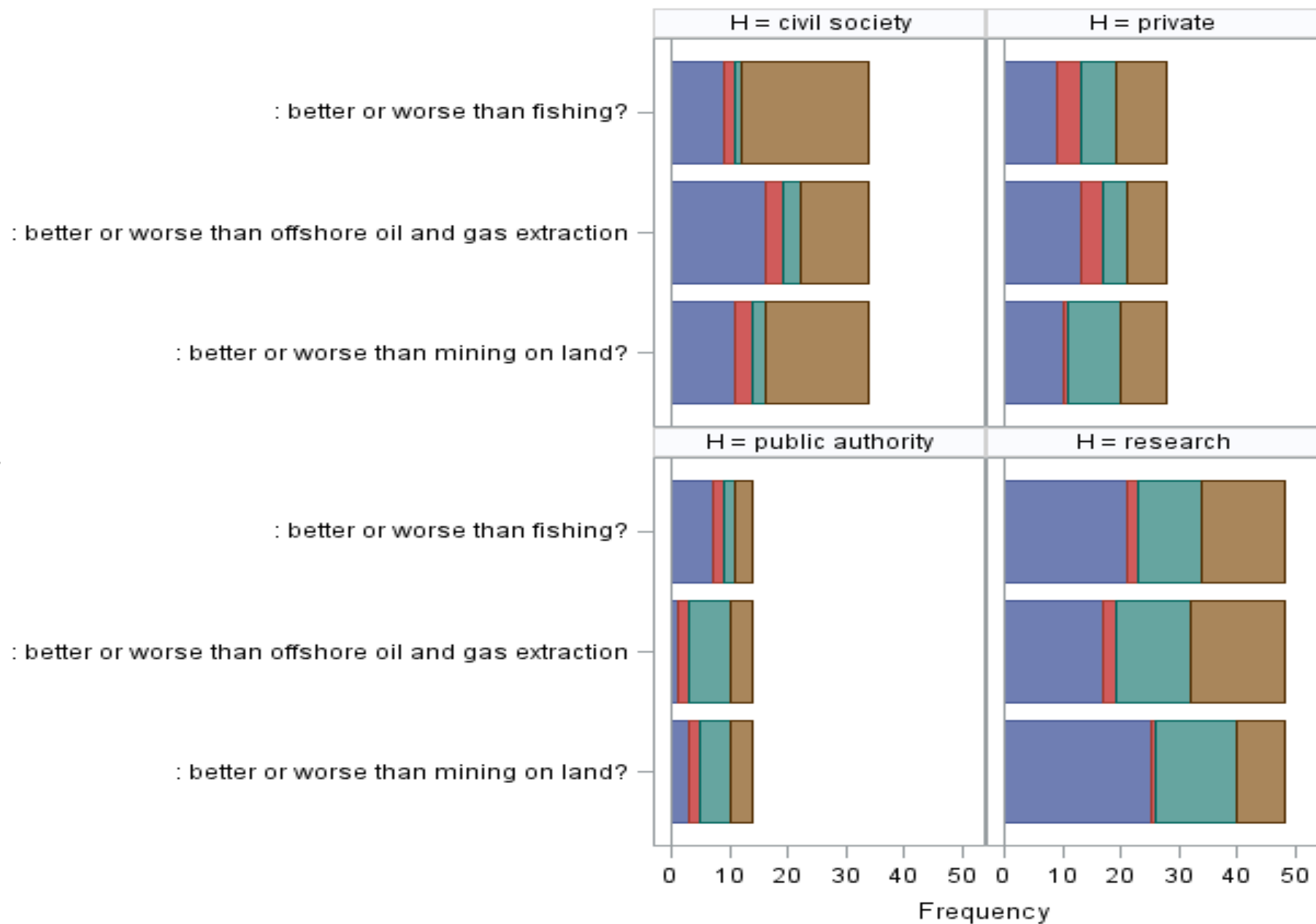
Copyright - The Mountains-in-the-Sea Research Team

better or worse than fishing?

better or worse than terrestrial mining?



question



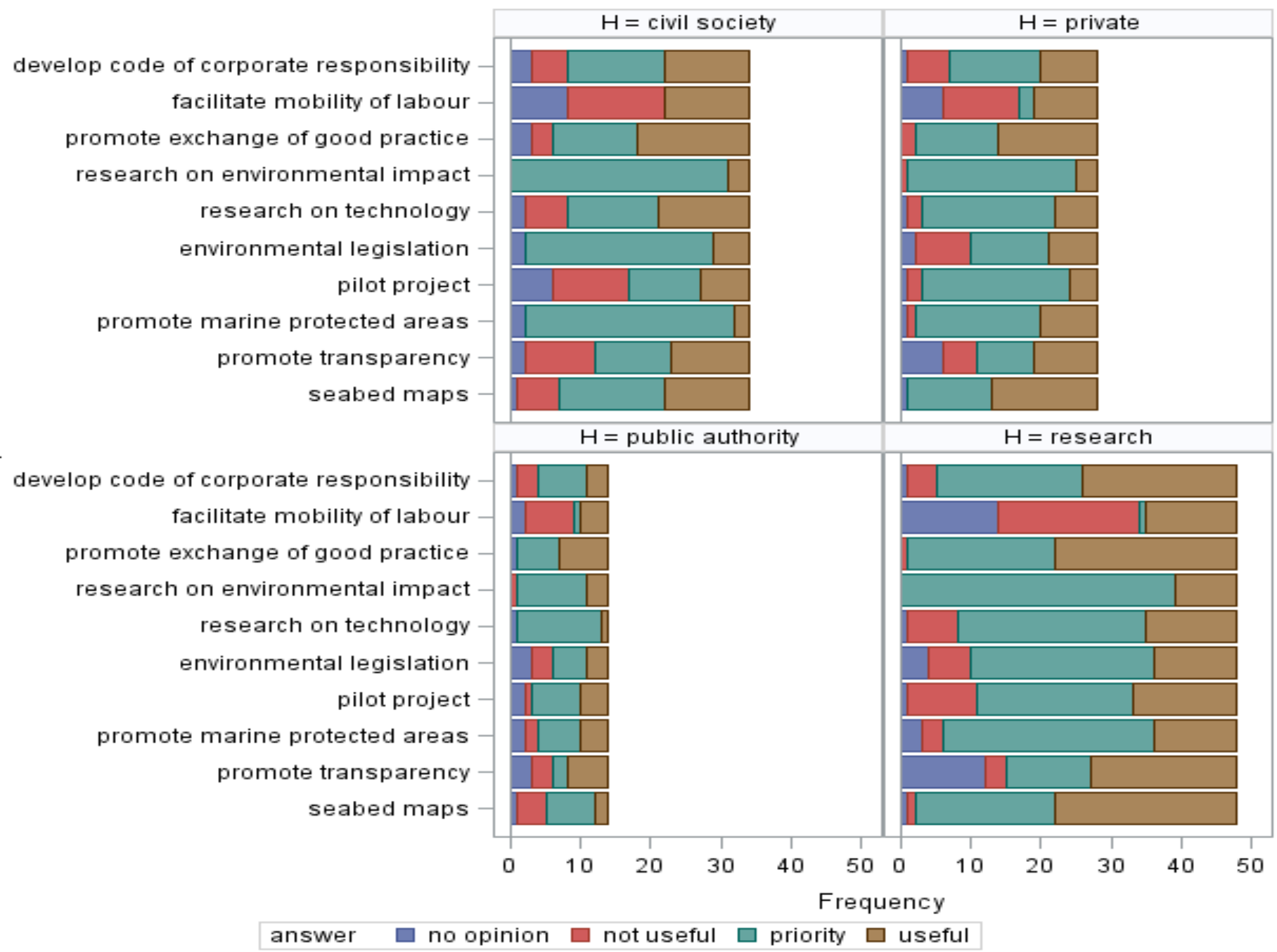
answer

■ it depends how it is done and where it is done
 ■ no opinion
 ■ probably better
 ■ probably worse

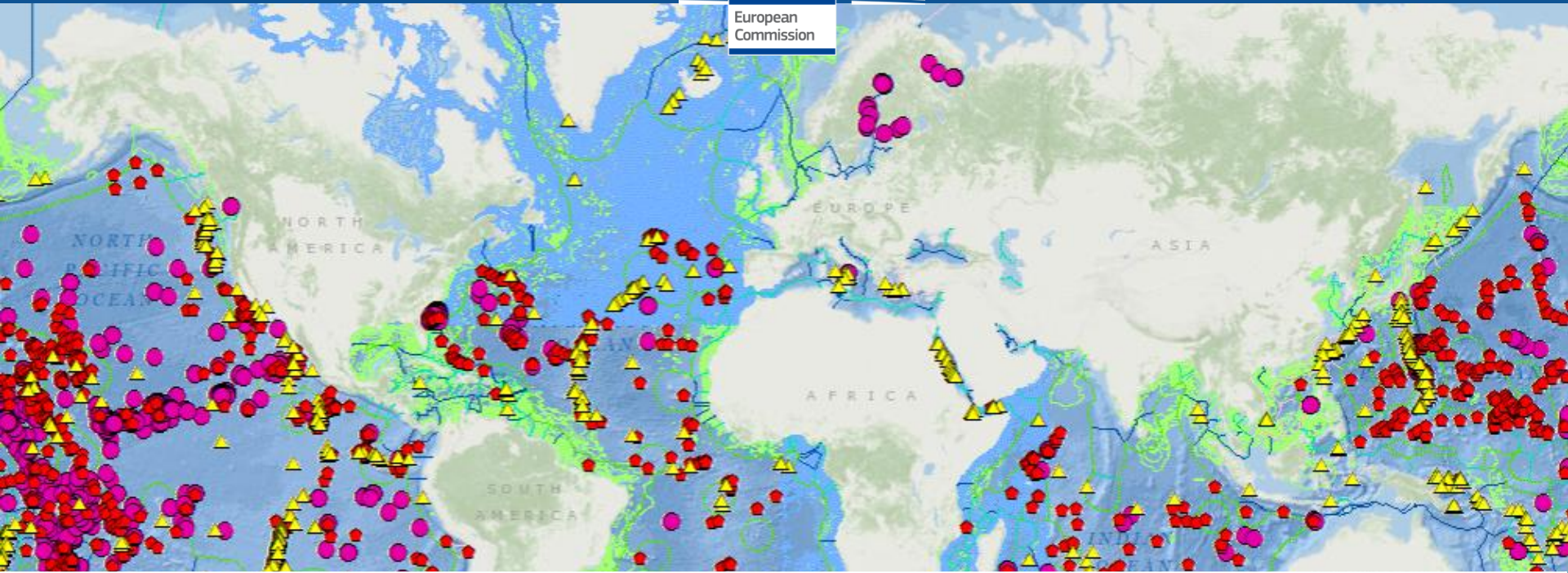
study deadlines

ANALYSIS	DEADLINE
technology	revised draft 28 June
economic	draft 28 June
legal	revised draft 28 June
geological	draft 28 June
project	draft 28 June
environmental	revised draft 28 June

question



answer no opinion not useful priority useful



event	deadline
consultation checked with respondents	June 2014
consultation results on-line	June 2014
final report study	28 August 2014
draft consultation feedback	September 2014



MARITIME AFFAIRS AND FISHERIES

[Commission](#) > [DGs](#) > [Maritime Affairs and Fisheries](#) > [Consultations](#) > [Seabed mining](#)

[Maritime Affairs](#)



[Fisheries](#)



[Atlas](#)



[Forum](#)



[About us](#)

10



Share



nu

us

acts and funding

and events

ultations



Stakeholder consultation on seabed mining

Public consultation

Policy fields

Integrated Maritime Policy

Target groups

Public authorities, citizens, companies and organisations concerned with seabed mining are welcome to contribute to this consultation.

Period of consultation

From **17.03.2014** to **16.06.2014**

Search

Free text

Search



[Search all news](#)



Subscribe to
our e-newsletter



EUMOF

European Market Observa
Fisheries and Aquaculture P

Related content

[Your voice in Europe](#)