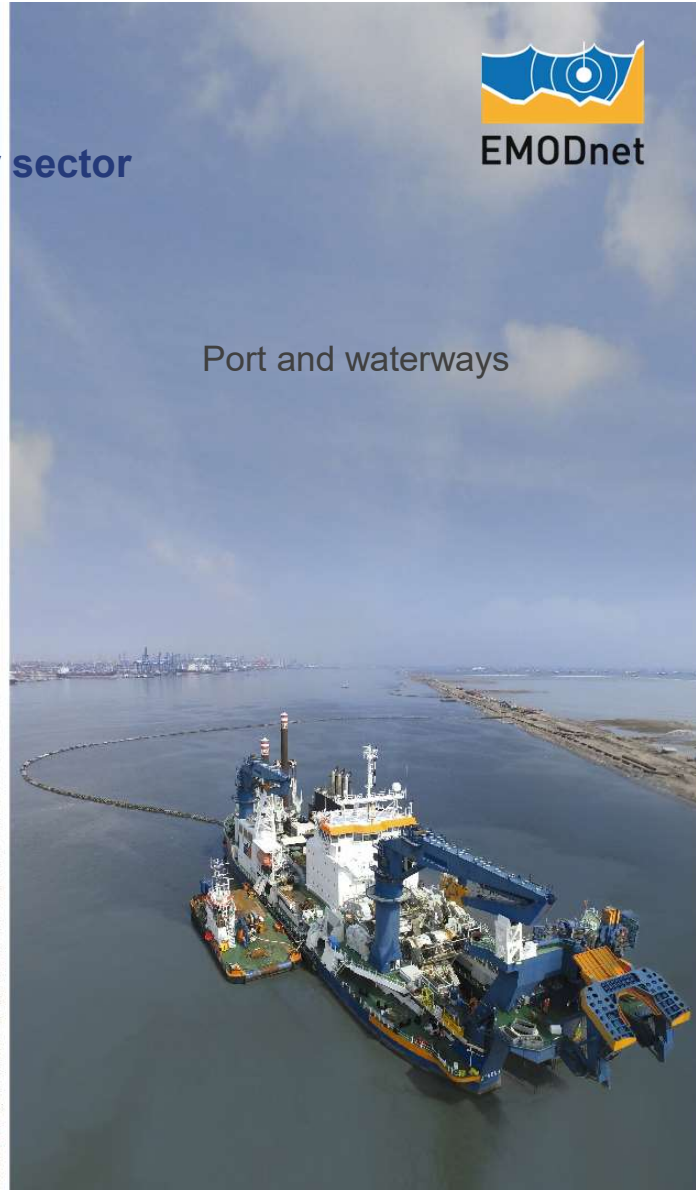


Gerben J. de Boer | Van Oord  
EMODnet Marine Data  
for the offshore renewable energy sector  
20 sep 2022

Offshore wind



Port and waterways



Coasts



- Improving offshore operators' efficiency and costs

## Offshore wind energy

### EMODnet bathymetry

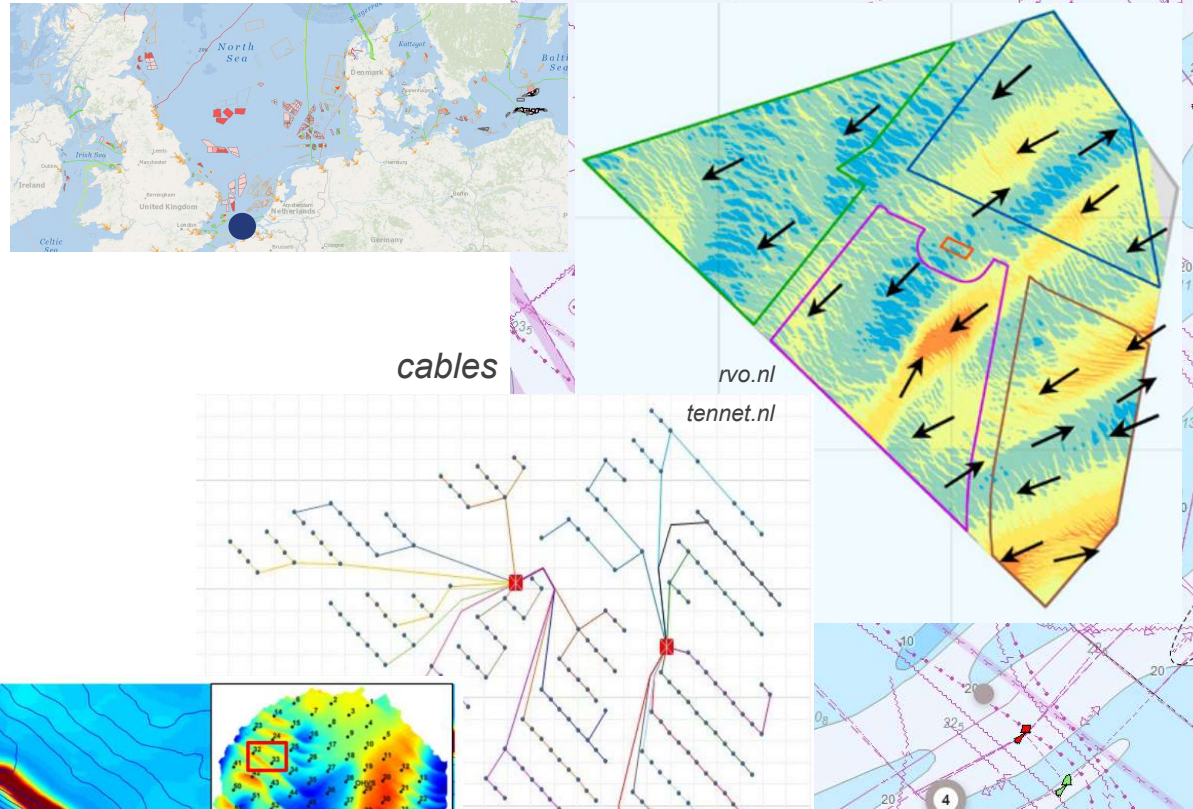
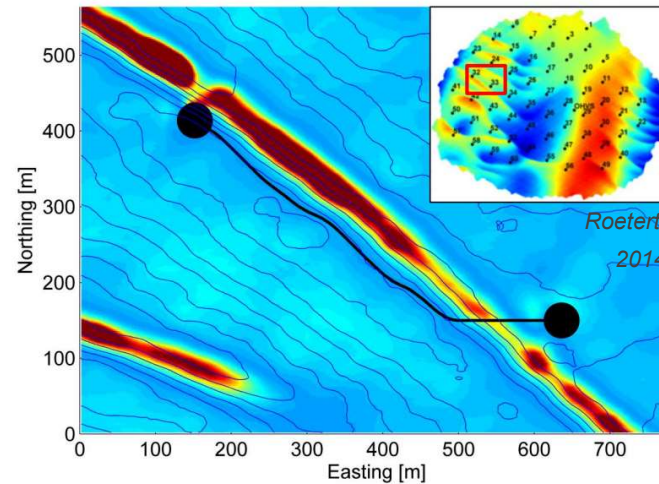
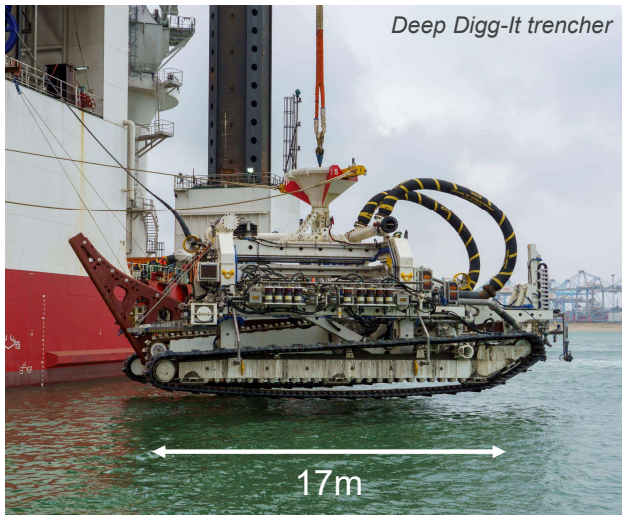
### EMODnet geology

Borssele 3/4 farm: 77 turbines, 0.7 GW

- Example: Micro siting

Exact location of monopiles and cables optimized

- Prevent exposure due to moving sand waves
- Cable burial *trencher* has preferred slopes
- Guarantee sufficient burial depth against anchors



- Enriching company data

## Offshore wind energy EMODnet physics

Borssele 3/4 farm: 77 turbines, 0.7 GW

- Example: Workability forecast

Workability determined by mixture of data sources

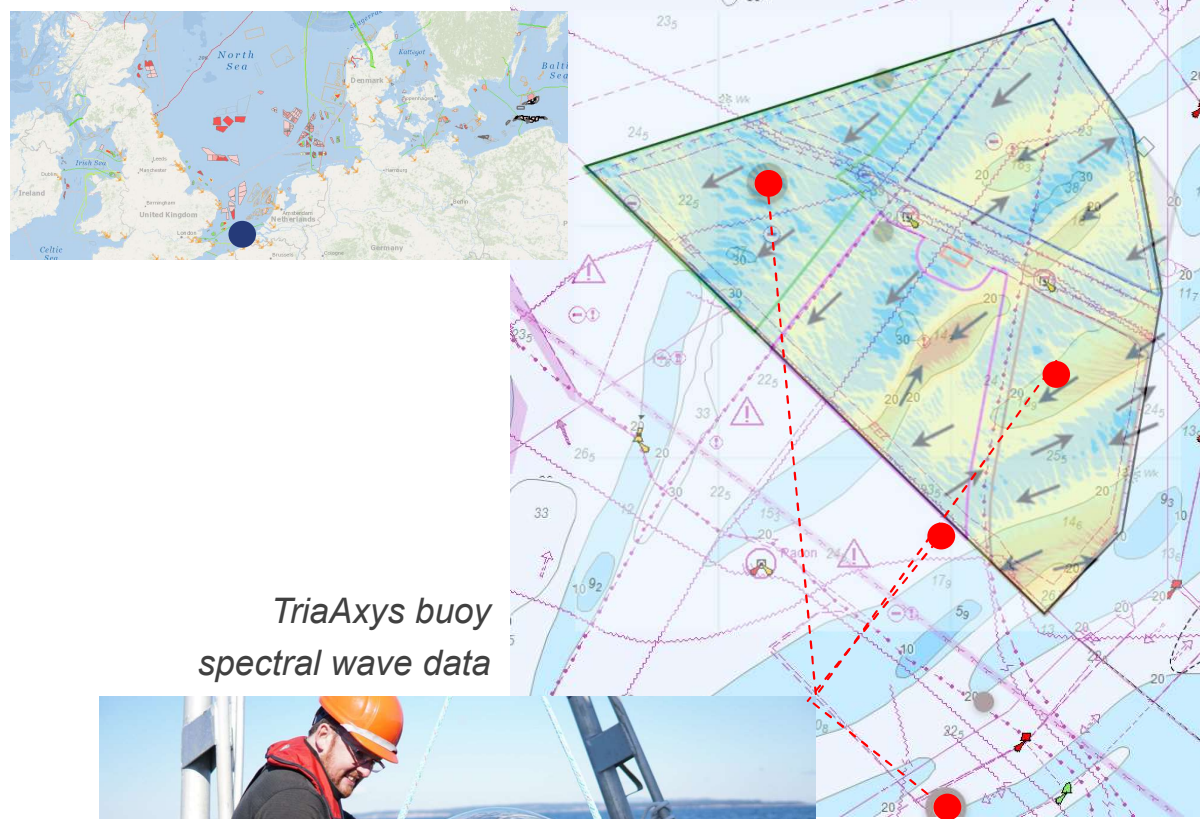
- Own fleet of TriAxys and WaveRider buoys
- Buoy can be broken due to
  - Battery
  - Failure (leakage)
  - Collision with vessels
  - Storms, adrift

With public buoys we can decrease uncertainty

Public buoys provide fall back for our buoys

Public buoys essential for the commercial forecasts

We provide our buoys data NRT to forecasters



Gerben J. de Boer | Van Oord  
EMODnet Marine Data  
for the offshore renewable energy sector  
20 sep 2022



Questions:  
[gerben.deboer@vanoord.com](mailto:gerben.deboer@vanoord.com)

