



# size of the blue economy

presentation to  
Member States' Expert Group  
on integrated maritime policy  
25 June 2015

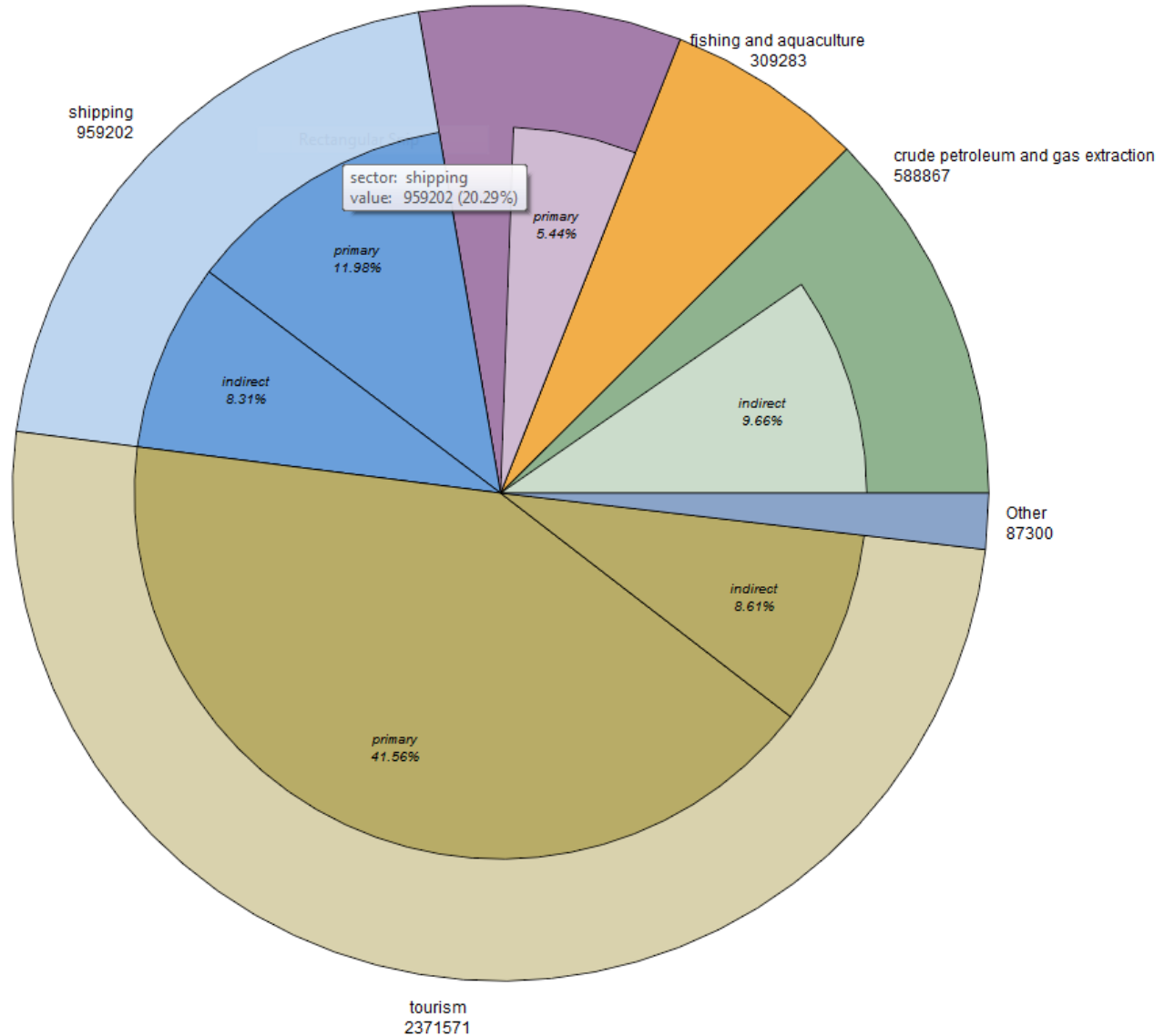
A middle-aged man with grey hair and glasses, wearing a dark suit, is speaking. A white callout box with a pointed top is overlaid on the lower left of the image, containing text. The background is a blurred indoor setting with a grey wall and a wooden ledge.

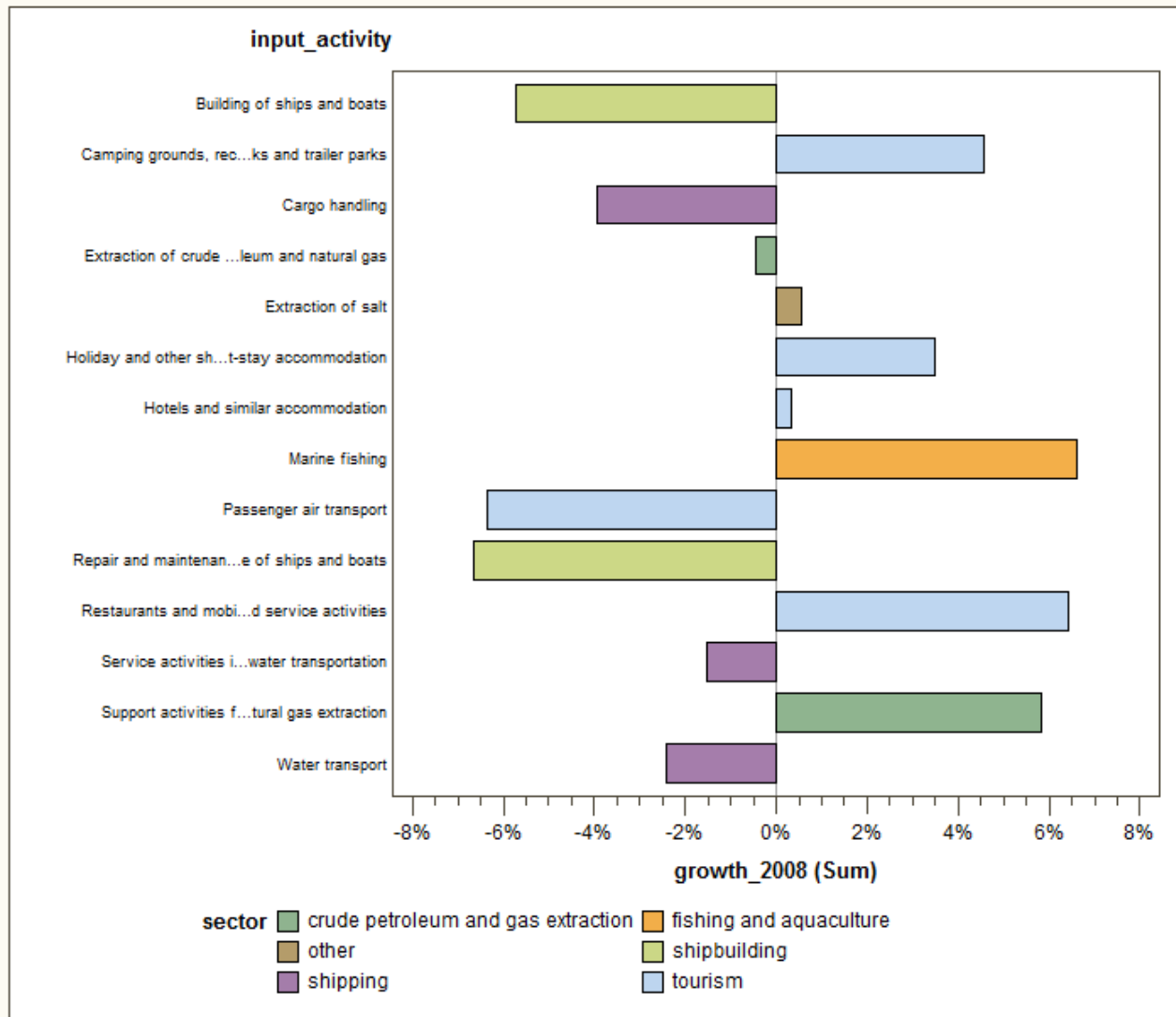
We need

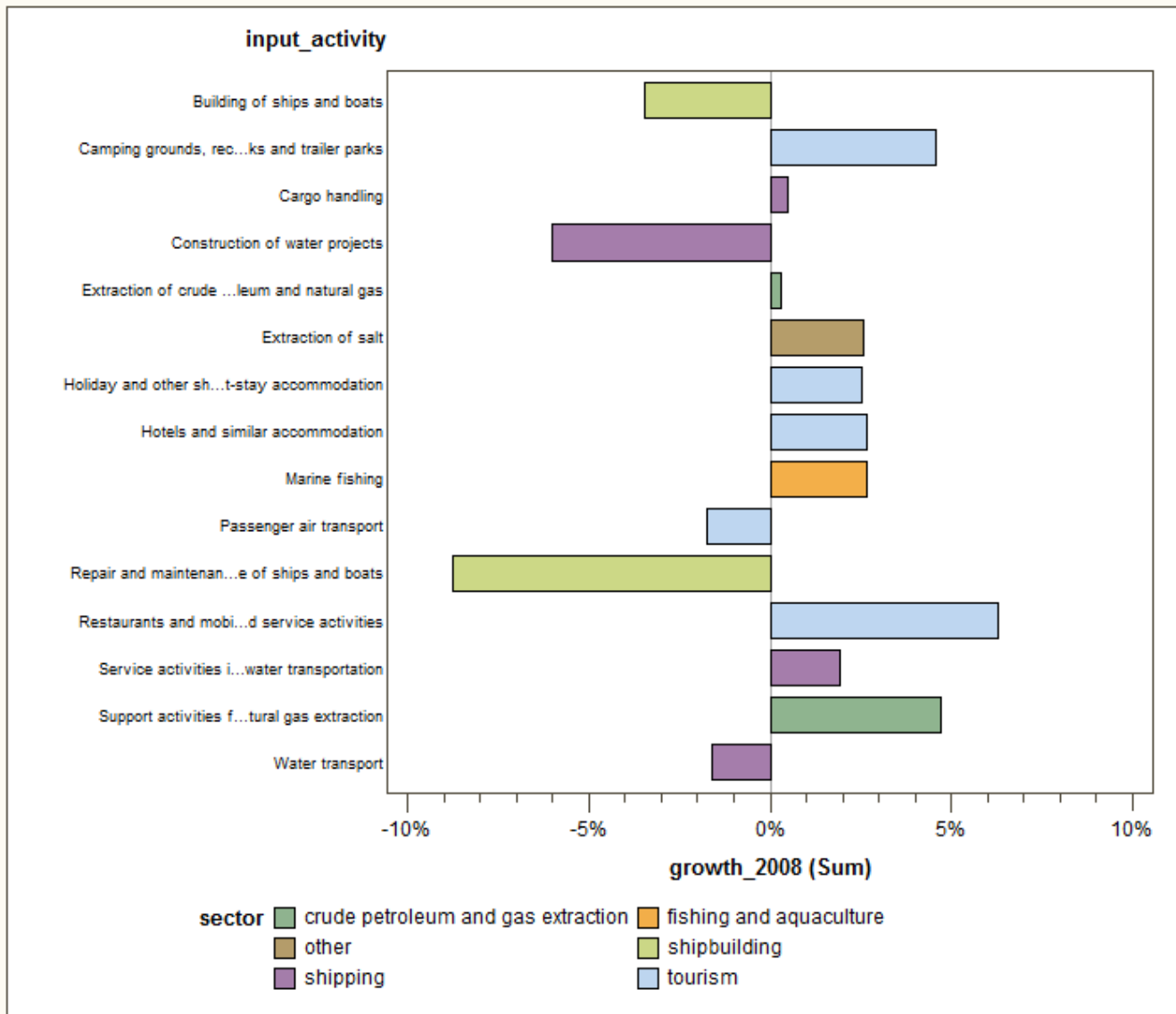
1. deepening of the analysis
2. verifying with Member States and industry
3. sea basin dimension

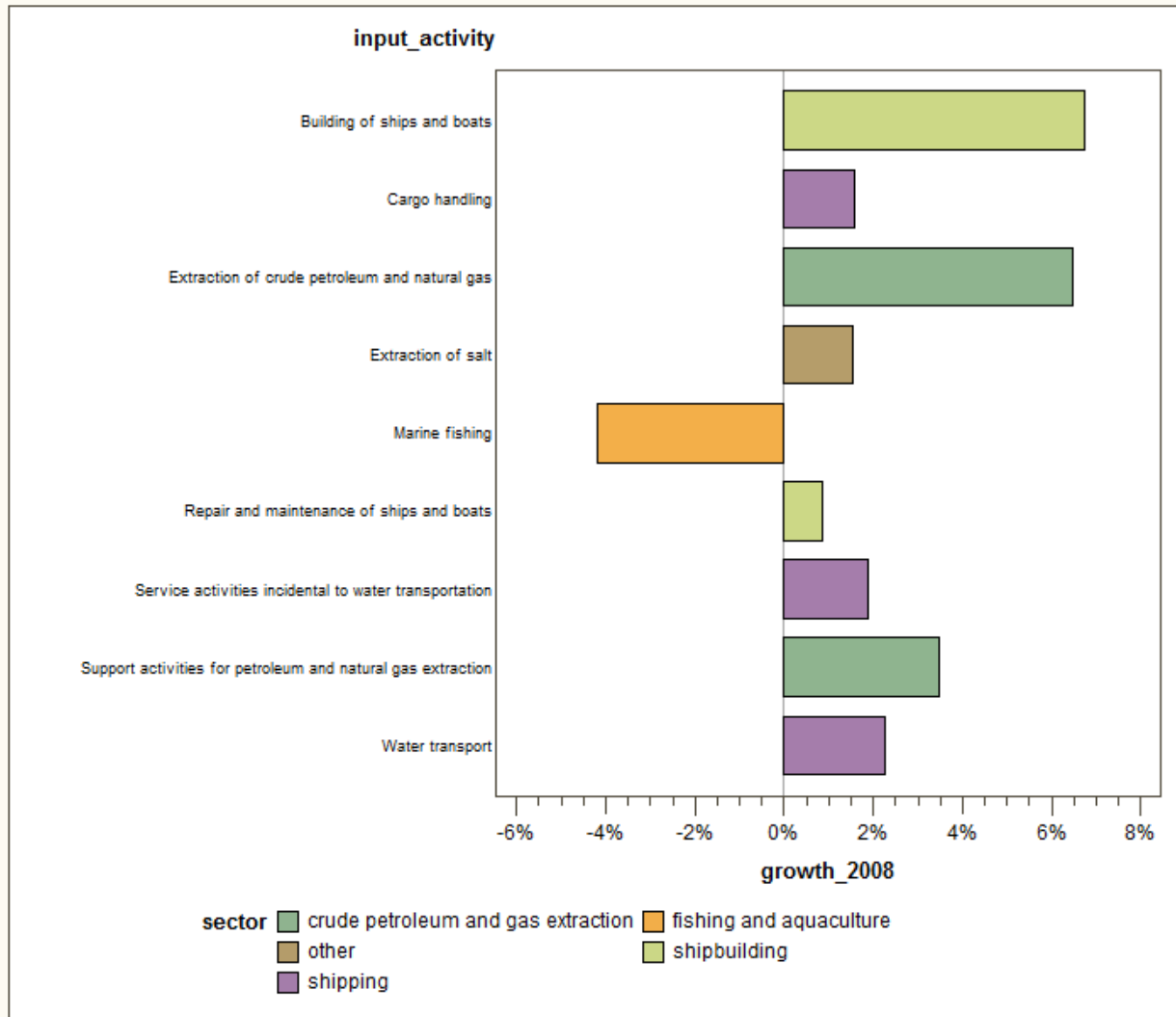


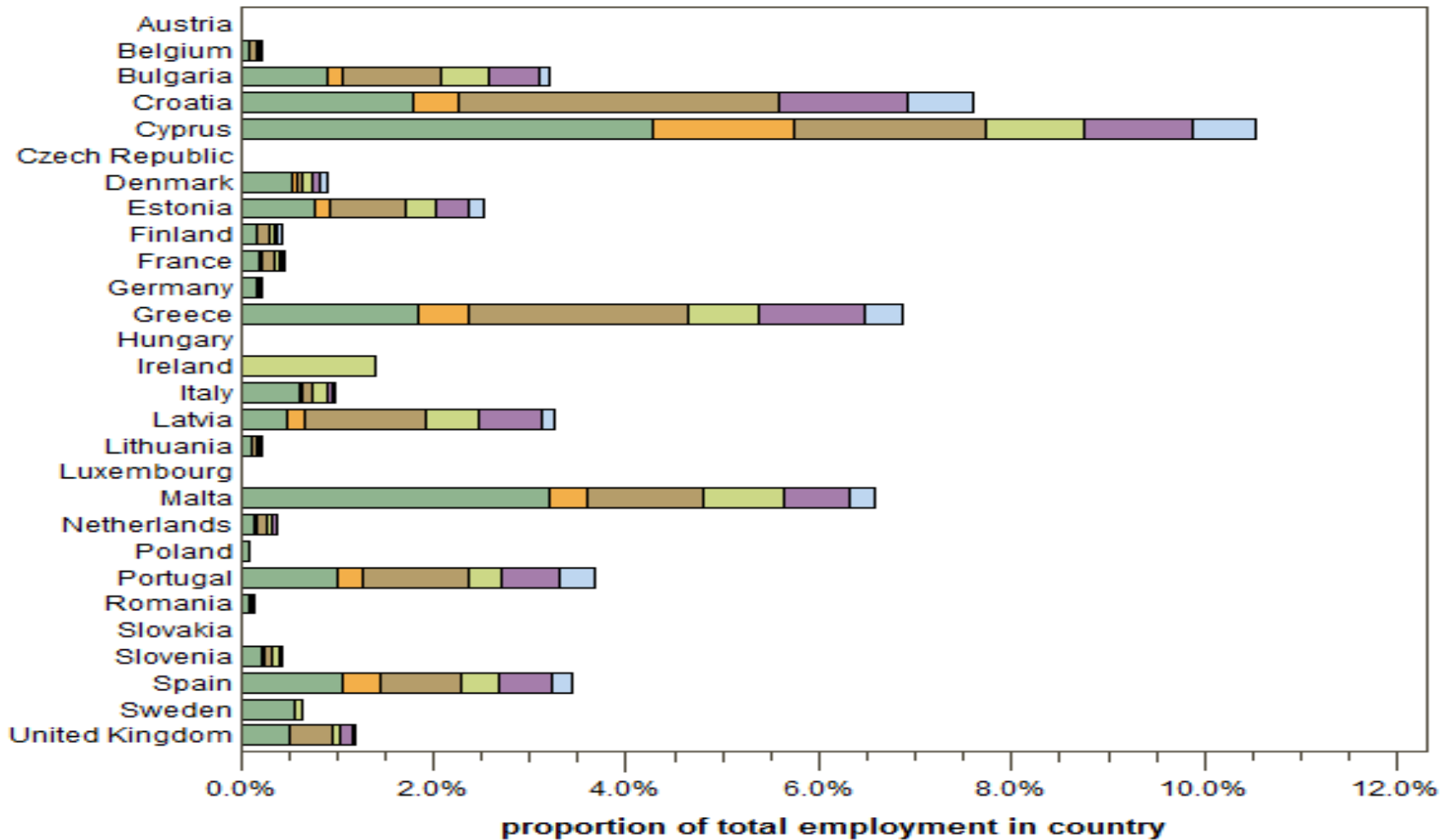
European  
shipbuilding  
410560



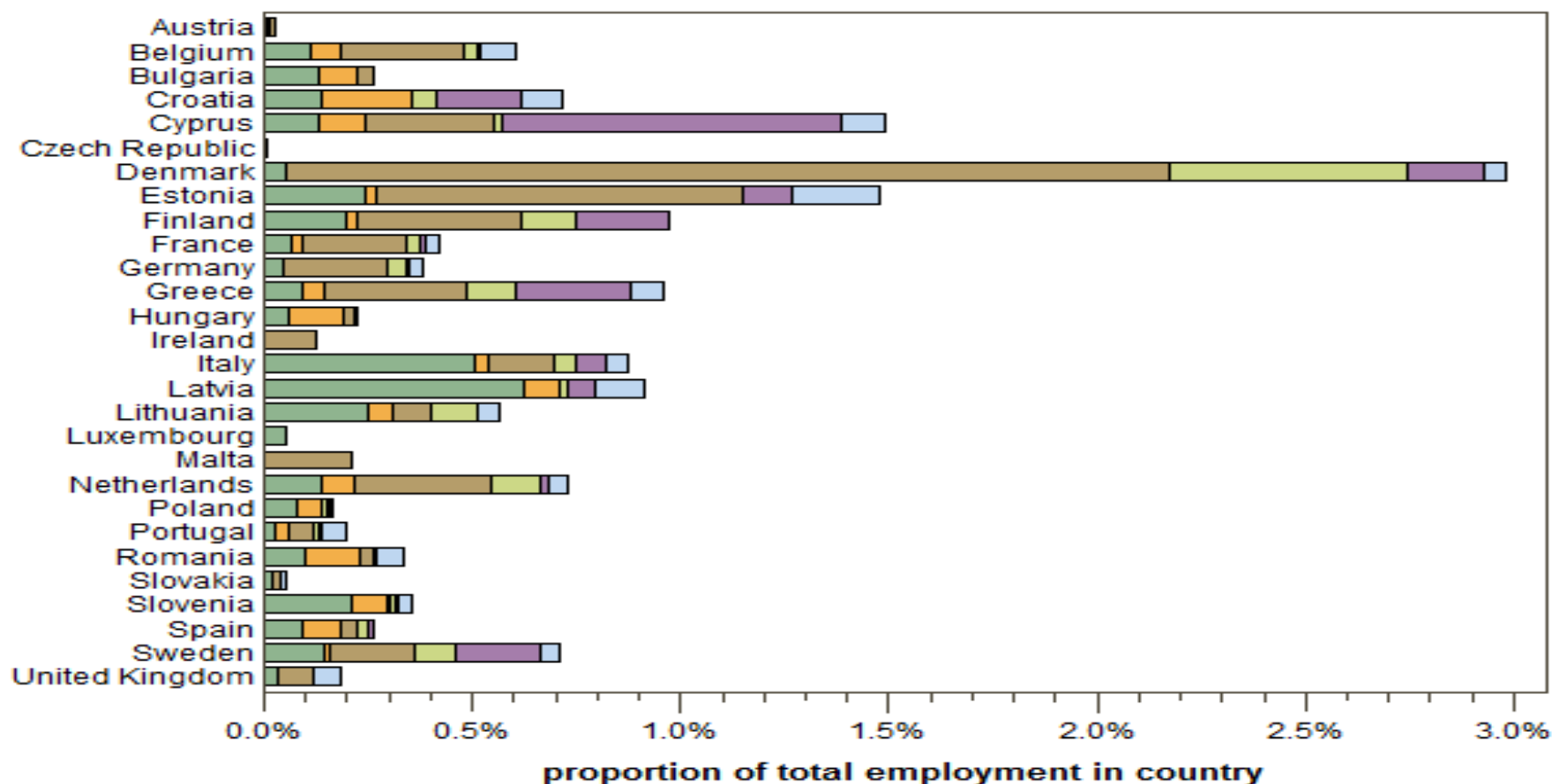








**spending**
 accommodation 
  air transport 
  food and beverage service  
 indirect 
  other 
  other transport

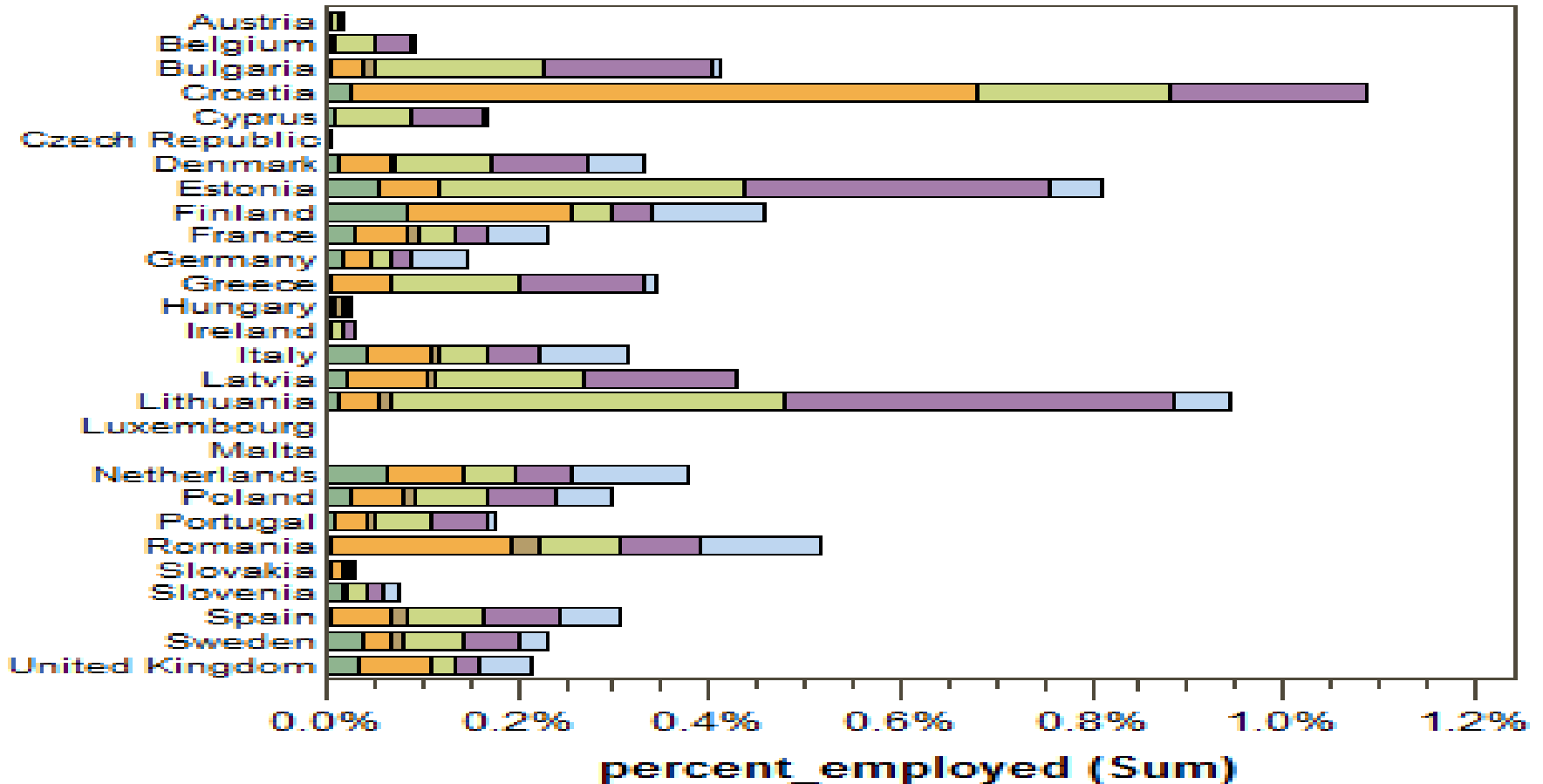


- spending**
- Cargo handling
  - Construction of water projects
  - Indirect
  - Sea and coastal freight water transport
  - Sea and coastal passenger water transport
  - Service activities incidental to water transportation





European Commission

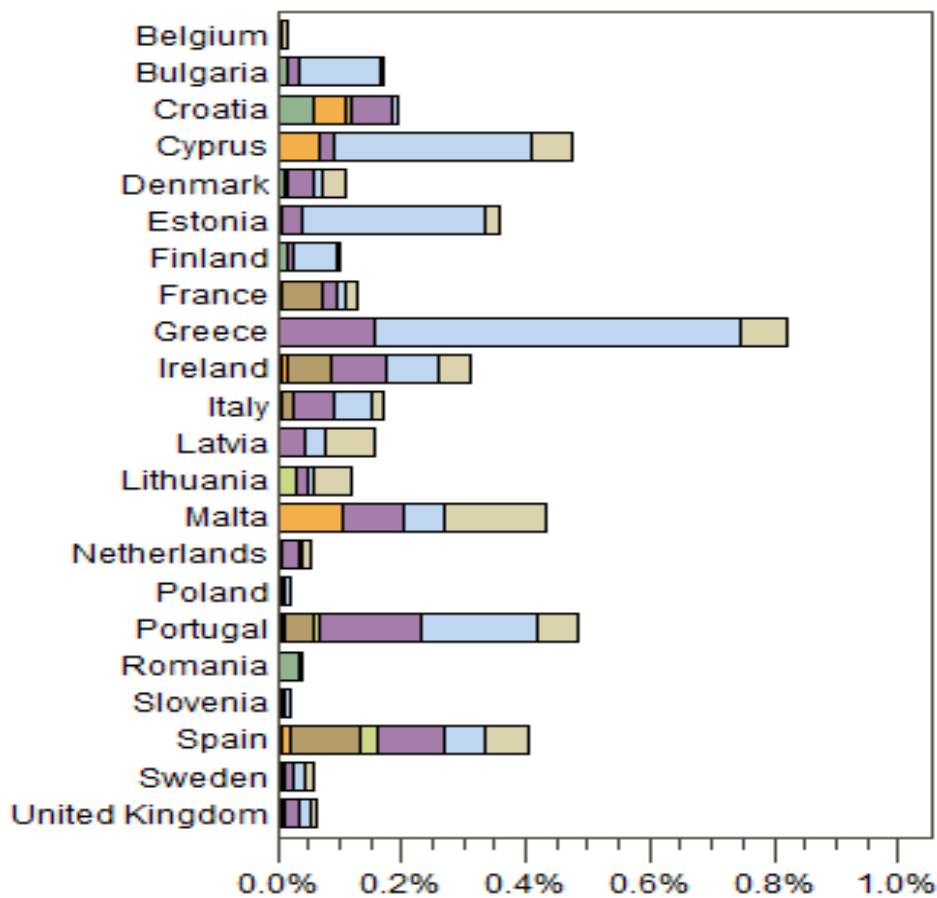


## spending

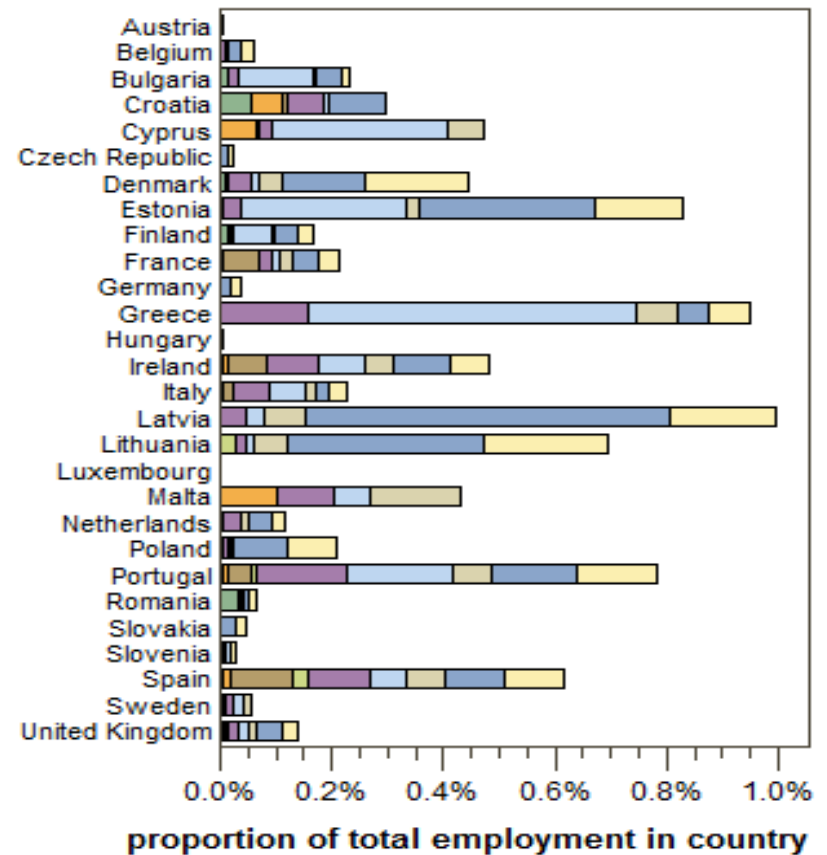
- Building of pleasure and sporting boats
- Building of ships and floating structures
- Dismantling of wrecks
- Repair and maintenance of ships and boats
- supplies to repair
- supplies to shipbuilding

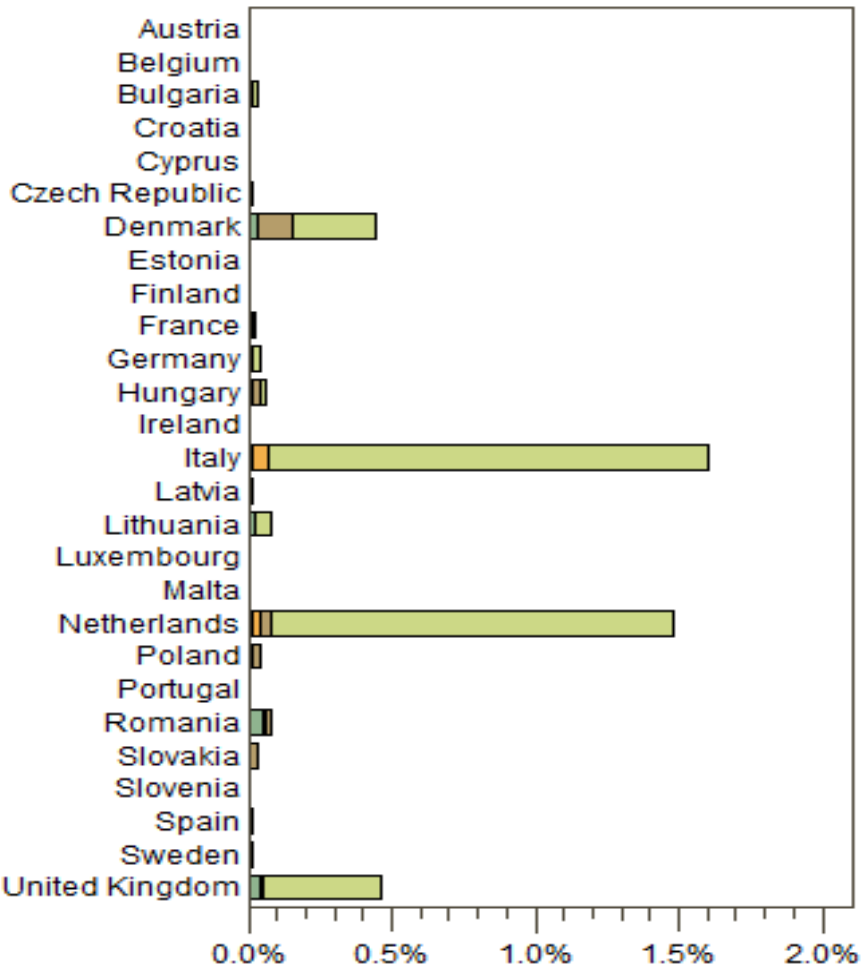


# fishing and aquaculture



an  
vision

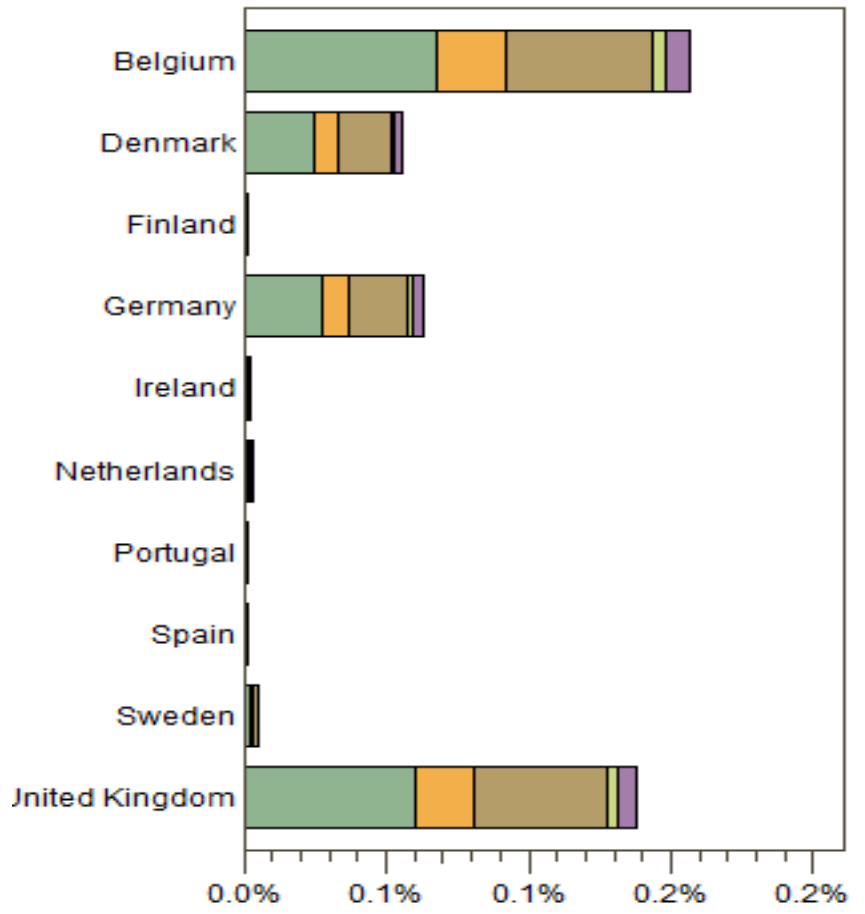




**proportion of total employment in country**

**spending**

- Extraction of crude petroleum
- Extraction of natural gas
- Support for oil and gas
- indirect



**proportion of total employment in country**

**spending**

- wind - indirect
- wind - installation
- wind - manufacturing
- wind - other
- wind - utilities

- meeting of specialists from Member States in September ?