

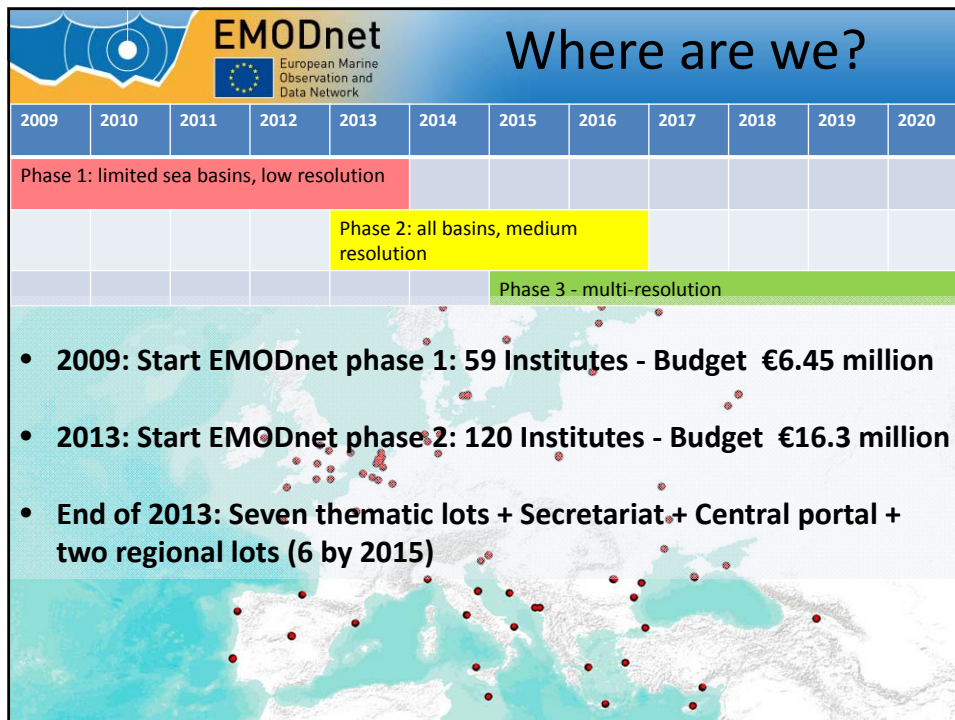


**EMODnet**

## EMODnet Progress Update

22<sup>nd</sup> MODEG Meeting, Brussels

Jan-Bart Calewaert ([janbart.calewaert@emodnet.eu](mailto:janbart.calewaert@emodnet.eu))



## EMODnet thematic lots Phase II

| MARE 2012/10 | Theme / region  | Phase II Starting Date |
|--------------|---|------------------------|
| Lot 1        | <b>Bathymetry:</b> hydrography– bathymetry (water depth) and topography, underwater features          | 29/07/2013             |
| Lot 2        | <b>Geology:</b> seabed substrata, strata, coastal erosion, geological hazards                         | 16/10/2013             |
| Lot 3        | <b>Habitats:</b> classification of seabed habitats, based on physical parameters                      | 10/09/2013             |
| Lot 4        | <b>Chemistry:</b> concentrations of chemicals (nutrients, contaminants) in water, sediments and biota | 16/08/2013             |
| Lot 5        | <b>Biology:</b> distribution and abundance of living species  | 30/08/2013             |
| Lot 6        | <b>Physics:</b> temperature, salinity, waves, currents, sea-level, light penetration                  | 24/07/2013             |
| Lot 7        | <b>Human Activity:</b> Data on the intensity and spatial extent of human activities at sea.           | 17/09/2013             |





## Major Achievements Yr 1 (1)

- Installation of Secretariat Office @ InnovOcean (09/13)
- EMODnet Central landing page online (10/2013)
- Set-up of EMODnet Steering Committee (12/13)
- Harmonisation of thematic portals (step 1)
- All Phase II projects started (12/13)
- EMODnet Communication Strategy + Social media (12/13)
- Launch of checkpoints and human activities portal (Q1 2014)
- Successful EMODnet SC (2) and MODEG (2) Meetings
- Establishment of solid progress monitoring system based on indicators (01/14)
- Production of the first EMODnet leaflet
- Various events: e.g. Workshop @ EMD 2014, Bremen



## Major Achievements Yr 1 (2)

- Development of “**EMODnet Regions map**” (5/14)
- Long list of achievement from the individual portals
  - See maritime forum overview
  - All have made significant progress in mapping data resources and incorporating these datasets + have contributed significantly in development of the progress indicators
  - New services and webinterfaces have been developed e.g. by Seabed habitats, Physics, human activities,



## Several challenges remain

- Single sign-on
- Maintaining realistic stakeholder expectations
- Open supply and access of marine data
- Improve data ingestion from research and industry
- Seek and implement feedback from users
- Interoperability issues



## Secretariat User-survey

- **Actively seek feedback from users for each portal**
- **General survey + in depth interviews after testing/evaluation by users**
- **Main high level recommendations (so far)**
  - 1. *Intuitive and straightforward user navigation***
  - 2. *Provide information that is relevant to users***
  - 3. *Create realistic expectations and opportunities***

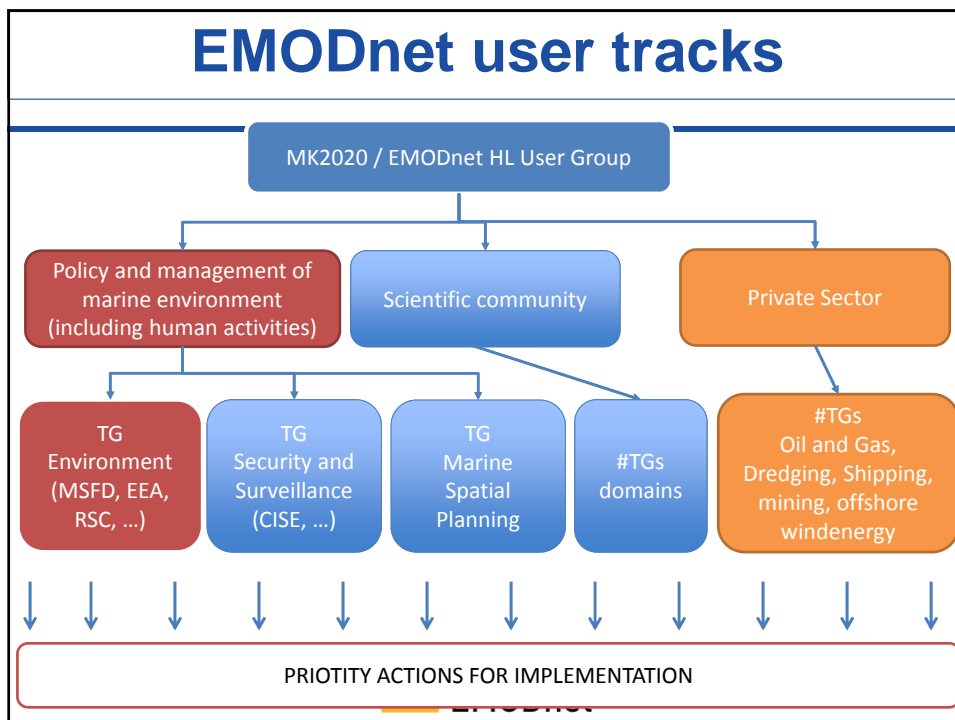


## The way ahead

- Communication on Innovation in the Blue Economy and Roadmap/Action Plan
  - **more involvement of USERS** – special attention to private sector
  - mechanism to advise Member States and the EU on the most cost-effective sampling, surveying and observation programme for each sea-basin
  - convergence of EMODnet, data collection in fisheries and Copernicus marine service



## EMODnet user tracks



## EMODnet-MSFD?

- Various *ad hoc* interactions since years
- New impetus with support from Member States and RSCs earlier this month (9/9/2014, Brussels)
- EMODnet can contribute by providing
  - Data and Products
  - Methods and tools for decentralised reporting
- EMODnet may benefit if data collected or used in framework of MSFD is made available through EMODnet for free and without restrictions on use



## EMODnet-MSFD (2)

- Most portals are required to develop data products for MSFD or take requirements into account – in particular Biology and Chemistry
- EMODnet Biology D2.1 List of species tagged with role and importance within MSFD reporting and the linked descriptor for inclusion in ERMS/WoRMS (M6).
- EMODnet Chemistry providing data and developing data products (e.g. DIVA maps) for MSFD



## What's next?

- **EMODnet@eurOCEAN2014, 6 Oct 2014**
- **User workshop Nov 2014**
- Developing 2 brochures and 2 videos
- Demonstrations and presentations at various events
- Portal testing protocols and implementation
- User-feedback surveys – implementation of recommendations
- Workshop or EMODnet family day at EMD 2015



*Thank you  
for your attention*

