



EMODnet



European Marine
Observation and
Data Network

EMODnet Jamboree
16-18 June 2021

Online event

EUSeaMap: experiences and sharing best practices with other regions

Eleonora Manca

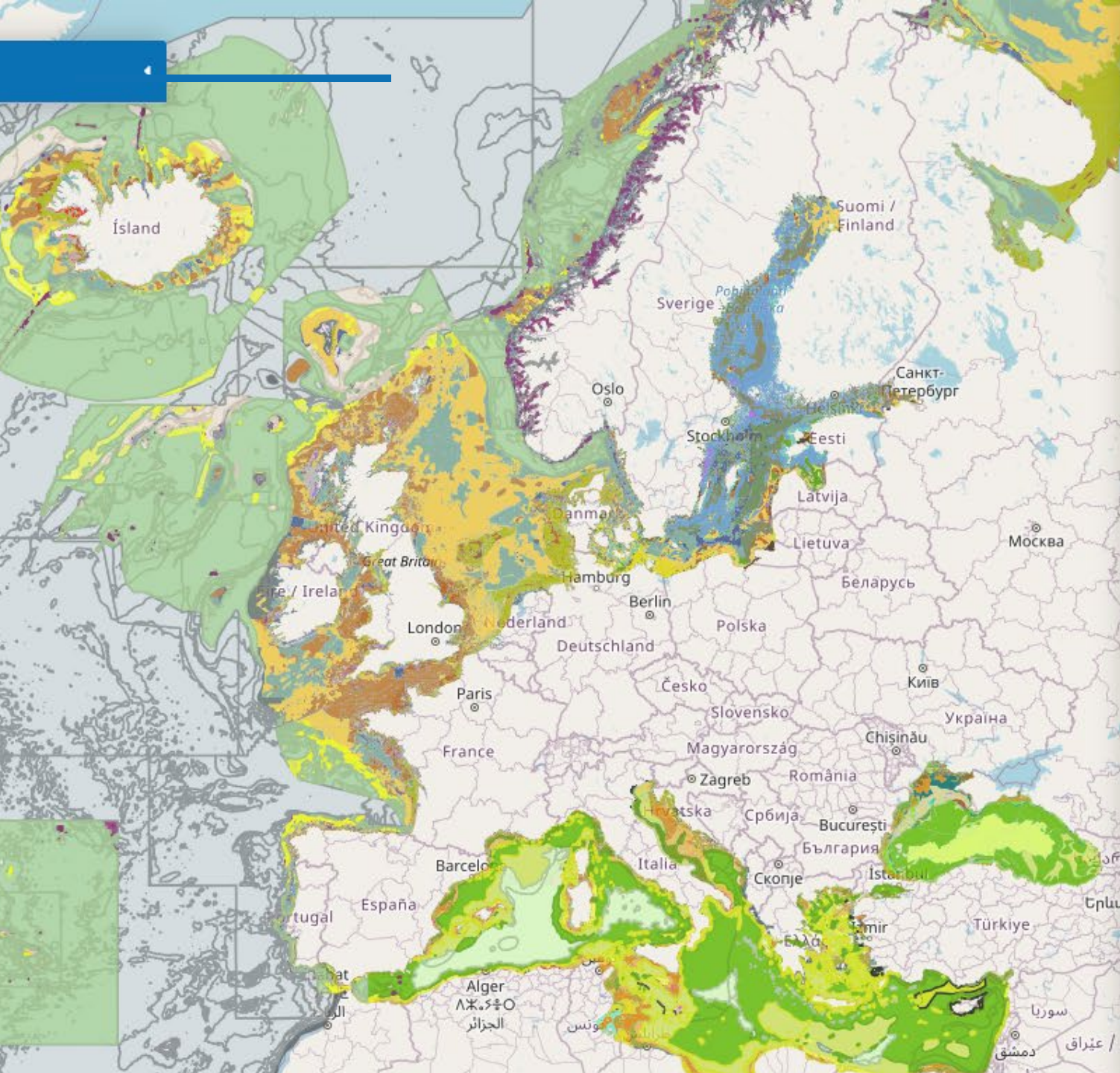
JNCC

eleonora.manca@jncc.gov.uk;

Twitter: @EleoManca

EUSeaMap (2019) – EUNIS/full-detail classification

- A3: Infralittoral rock and other hard substrata
- A3.1: Atlantic and mediterranean high energy infralittoral rock
- A3.2: Atlantic and Mediterranean moderate energy infralittoral rock
- A3.3: Atlantic and Mediterranean low energy infralittoral rock
- A3.4: Baltic exposed infralittoral rock
- A3.5: Baltic moderately exposed infralittoral rock
- A3.6: Baltic sheltered infralittoral rock
- A4: Circalittoral rock and other hard substrata
- A4.1: Atlantic and Mediterranean high energy circalittoral rock
- A4.2: Atlantic and Mediterranean moderate energy circalittoral rock
- A4.12 or A4.27 or A4.33: Sponge communities on deep circalittoral rock or faunal communities on deep circalittoral rock
- A4.2: Atlantic and Mediterranean moderate energy circalittoral rock
- A4.26: Mediterranean coralligenous communities moderately exposed to hydrodynamics
- A4.27: Faunal communities on deep moderate energy circalittoral rock
- A4.3: Atlantic and Mediterranean low energy circalittoral rock
- A4.33: Faunal communities on deep low energy circalittoral rock
- A4.4: Baltic exposed circalittoral rock
- A4.5: Baltic moderately exposed circalittoral rock
- A4.6: Baltic sheltered circalittoral rock
- A5: Sublittoral sediment
- A5.13: Infralittoral coarse sediment
- A5.14: Circalittoral coarse sediment
- A5.15: Deep circalittoral coarse sediment
- A5.23: Infralittoral fine sand
- A5.23 or A5.33 or A5.34: Infralittoral fine sand or infralittoral sandy mud or infralittoral muddy sand
- A5.23 or A5.24: Infralittoral fine sand or infralittoral muddy sand
- A5.24: Infralittoral muddy sand
- A5.24 or A5.33 or A5.34: Infralittoral muddy sand or infralittoral sandy mud or infralittoral sandy mud
- A5.25: Circalittoral fine sand
- A5.25 or A5.26: Circalittoral fine sand or circalittoral muddy sand
- A5.26: Circalittoral muddy sand
- A5.26 or A5.35 or A5.36: Circalittoral muddy sand or circalittoral sandy mud or circalittoral sandy mud
- A5.27: Deep circalittoral sand



EUSeaMap progress and challenges



MESH MAPPING EUROPEAN SEABED HABITATS

Home Scope of Project Product Library

Development in Europe

If you work producing seabed overview of the marine mapping... The website is designed to offer interactive mapping page, a templates and technical report planning surveys, fieldwork start by reading the MESH E already have interest in a spe

The MESH Project ran between from five European countries financial support from the EC together scientific and tech management, and proven pra management within national r

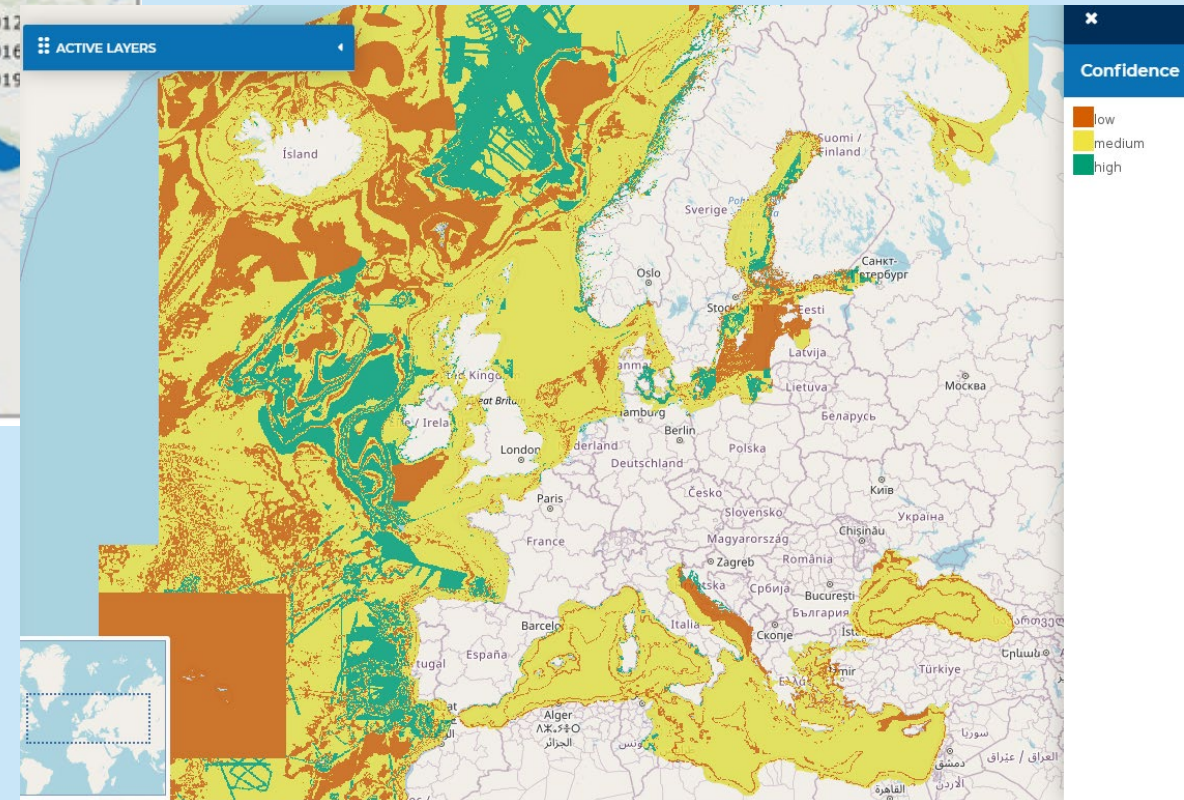
Highlights:

1. [MESH Confidence assessment tool](#)
2. [MESH Survey scoping tool](#)
3. [Guide for non Scientists](#)
4. [MESH Conference](#)
5. [MESH Seabed signature catalogue](#)

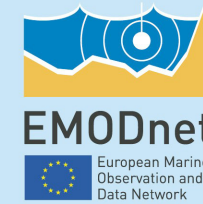
Although the MESH Project ended in 2008, the [mapping section](#) of this website continues to be updated with the best available seabed-habitat data and the MESH team would still appreciate any [feedback](#) on the website or the products.

Home page translations: 

All material variously copyrighted by MESH project partners 2004-2010



EMOD-PACe/CEMDnet: habitat mapping in an Asian Basin



EMODnet Jamboree
16-18 June 2021

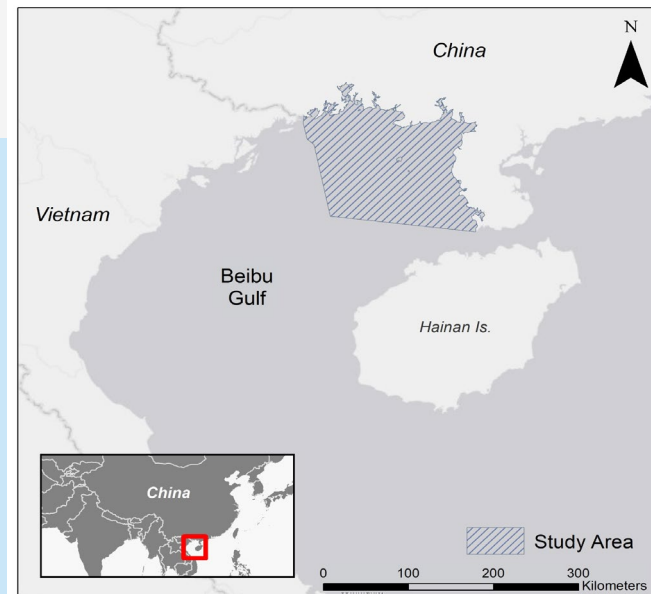
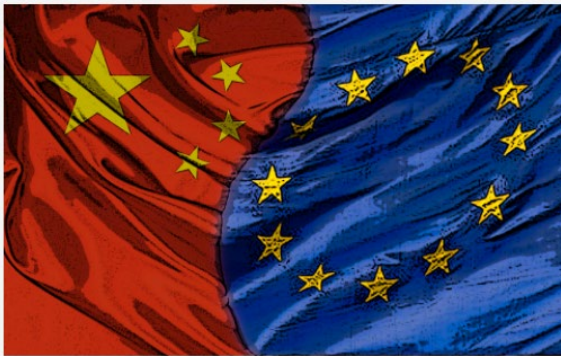
Online event

EMOD-PACE and CEMDNET

EMODnet Partnership for China and Europe (EMOD-PACE)

China-EU Marine Data Network Partnership (CEMDnet)

In support of EU and China Blue Partnership



SEABED HABITATS

Unlocking seabed habitat data in Europe

Search

CONTACT US

SUBMIT DATA

HOME

ACCESS DATA

CONTRIBUTE DATA

RESOURCES

NEWS

ABOUT

HELPDESK

CENTRAL PORTAL

Documents and Outreach

HOME / RESOURCES / Documents and Outreach

Use Cases

Story Maps

Recommended Operating Guidelines

MESH archive

Acknowledgement in publications

Documents and Outreach

This section of the website provides access to EMODnet Seabed Habitats' promotional, technical and published material.



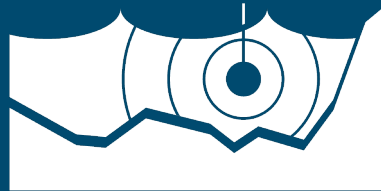
- Project Reports & Dissemination

[Method for classifying EUseaMap according to the new version of EUNIS, HELCOM HUB and the Mediterranean habitat types](#)

Released: February 2021

[Mapping seabed habitats over large areas: prospects and limits](#)

<https://www.emodnet-seabedhabitats.eu/resources/documents-and-outreach/>



EMODnet



European Marine
Observation and
Data Network