



ENPI Cross-border cooperation KOLARCTIC programme

*"Arctic Indigenous Peoples Dialogue"
18 October 2013
Brussels*

Bodil Persson (DG DEVCO)

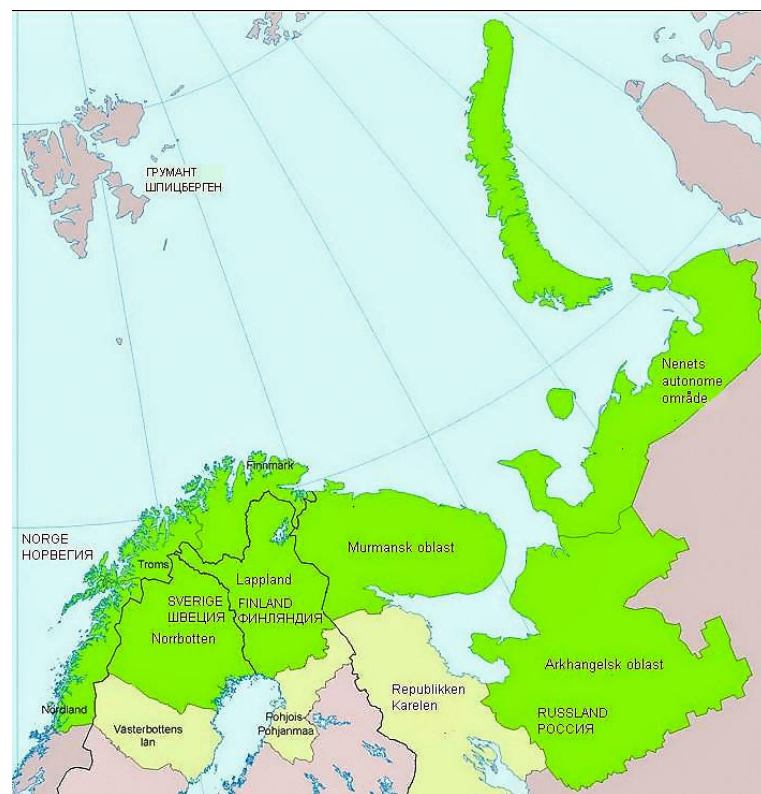
ENPI land border CBC programmes



State of Play of ENPI CBC programme

- *13 programmes up and running (10 land borders, 2 sea basing and one sea crossing)*
- *Total budget 2007-2013: 950 M €*
- *Implementation: Approximately 800 projects + 40 Large Scale projects*

CBC KOLARCTIC 2007-2013



OBJECTIVE AND THEMATIC PRIORITIES

Objective:

To reduce the border regions' problems related to the periphery and to promote multilateral cross-border cooperation

Thematic priorities:

PRIORITY 1 – Economic and social development

PRIORITY 2 – Common challenges

PRIORITY 3 – People to people co-operation and identity building

FACTS & FIGURES

- **Total programme budget: EUR 70 million**
 - EU funding: EUR 28 million
 - National co-financing: EUR 42 million (Finland, Sweden, Norway, the Russian Federation)

- **2 projects in which arctic indigenous people participate**

NEDA

Duration: **11/2010 – 07/2013**

Grant amount: **EUR 682 503**



PRIORITY 1 – Project example (1)

Objective of the project: to create and develop package tour services on an ethically and ecologically sustainable basis from the regions' indigenous peoples' own perspective. It aims to educate tourism actors in the participating regions.

Lead partner: The Sámi Education Institute (**Finland**)

Partners:

Yasavey Manzara, NGO Information and Research Center (**RU**)

The Department of Culture of Nenets Autonomous Region (**RU**)

The Department of Indigenous People in Nenets (**RU**)

Inari Event Lapland Ltd (**FI**)

Reindeer Hide – Quality High

Duration: **1/2013 – 12/2014**

Grant amount: **EUR 387 520**



PRIORITY 1 – Project example (2)

Objective of the project: to improve methods and know-how in raw reindeer hide processing among reindeer owners and slaughterhouses in North-West Russia. Until today, a big part of reindeer skins go to waste because of a lack of knowledge in processing them and in sales channels. The project includes training and micro investments in reindeer hide processing equipment.

Lead partner: Lapin Nahka Oy (Finland)

Partners:

Alex Co, Ltd. Arkhangelsk **(RU)**

Autonomous Non-Profit Organisation "Information-Research Centre "Yasavey Manzara", Naryan-Mar **(RU)**

Thank you for your attention!

bodil.persson@ec.europa.eu