

Result

- Common denominator: 500m grid
- CC-BY-NC license (non-commercial)
- Not for navigation, but for a lot of other exciting application

Challenges

- National differences (legislation, business models)
- International collaboration between authorities

Outlook

- Better coverage!
- Higher resolution (already possible for some countries)
- Commercial use

SWEDISH MARITIME ADMINISTRATION



<p>"The benefit of such a portal is massive! ... The portal will be heavily used."</p> <p>– Thomas Hammarlind, oceanographer, SMHI</p>	<p>"Here at HELCOM we have a map and data service that gathers many Baltic sea related map datasets ... Depth information is also very welcomed"</p> <p>– Joni Kaitaranta, data administrator, HELCOM</p>	<p>"I've had a quick look at the web site and the imagery and data looks great!"</p> <p>– Pauline Weatherall, BODC & GEBCO</p>
<p>"...a very useful navigation/mapping website. ... How can I get the highest resolution bathymetric data?"</p> <p>– Faramarz Nilouroushan, researcher Uppsala University</p>	<p>"The availability of bathymetric is of great importance when studying geological features as well as when planning new studies and surveys."</p> <p>– Johan Nyberg, marine geologist, SGU</p>	<p>"This information is crucial for studying the effects of a changing climate, including sea-level rise and ocean acidification to name a few."</p> <p>– Martin Jakobsson, professor, Stockholm University</p>

SWEDISH MARITIME ADMINISTRATION

Helsinki Commission

HELCOM Copenhagen Ministerial Declaration

Taking Further Action to Implement the Baltic Sea Action Plan
- Reaching Good Environmental Status for a healthy Baltic Sea

14 (M).RECALLING the HELCOM Copenhagen 2001, Krakow 2007 and Moscow 2010 commitments on hydrographic re-survey and COMMENDING WITH APPRECIATION the subsequent substantial progress made in systematic re-surveying of major shipping routes and ports in the region according to the HELCOM-BSHC Re-survey Scheme aimed at ensuring that safety of navigation in the Baltic Sea region is not endangered by inadequate source information;

15 (M).WE AGREE to take actions to ensure the completion of the re-surveys for areas used by navigation (CAT I and II) within the time schedules estimated in the 2013 Re-survey Scheme, to promote wider use of accurate and reliable depth information by e.g. developing existing and/or new products including an enhanced and freely accessible Baltic Sea Depth Model, and to foster CAT III re-surveys of other areas not primarily for safety of navigation purposes, e.g. for environmental protection;

-- Baltic Sea environmental ministers, Oct 2013

SWEDISH MARITIME ADMINISTRATION

Demo

SWEDISH MARITIME ADMINISTRATION

Sep 8, 2013 - Oct 7, 2013

Audience Overview

Overview

Visits vs. Select a metric

4,790 people visited this site

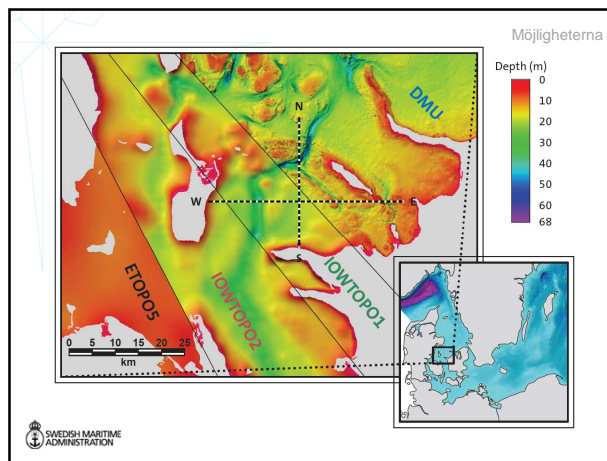
Visits: 5,754	Unique Visitors: 4,790	Pagesviews: 14,765
Pages / Visit: 2.57	Avg. Visit Duration: 00:04:05	Bounce Rate: 49.57%

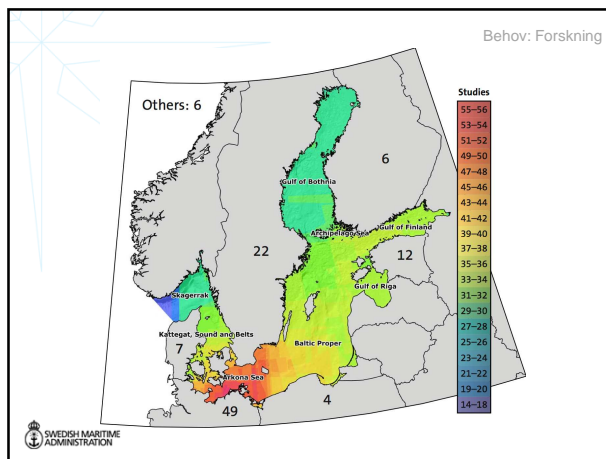
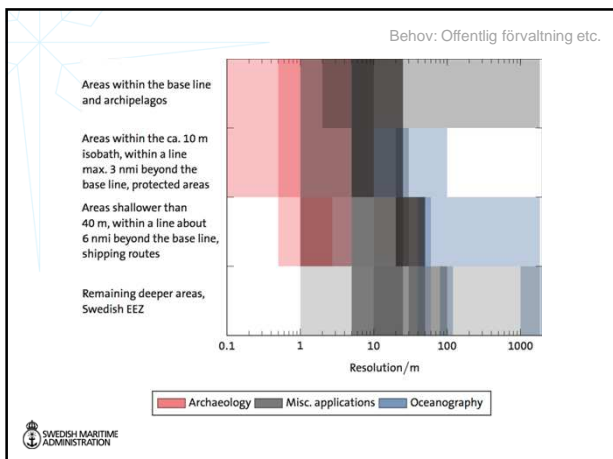
SWEDISH MARITIME ADMINISTRATION

Relation to EMODNET

- BSHC working group for Baltic Sea Bathymetry Database (BSBDWG) have initiated discussions with MARIS
- MoU between BSHC and DG Mare/MARIS
- Further steps taken at the next BSBDWG meeting 13 – 14 November, Norrköping Sweden. Proposal SMA coordinator for delivery of bathymetry in the Baltic Sea to EMODNET

SWEDISH MARITIME ADMINISTRATION





Uppdraget

En samlingshållaren svensk havspolitik

MonaLisa aktivitet 3.2

” Establish a common database of bathymetric data for the Baltic Sea Area

Regeringsuppdrag

” En digital djupdatabas bör inrättas och modeller för Östersjön bör utarbetas

” Ta fram en översiktlig djupdatamodell över Östersjön samt en förvaltningsplan

SWEDISH MARITIME ADMINISTRATION