

# The European Atlas of the Seas

Online Ocean Literacy Workshop, 16 June 2021

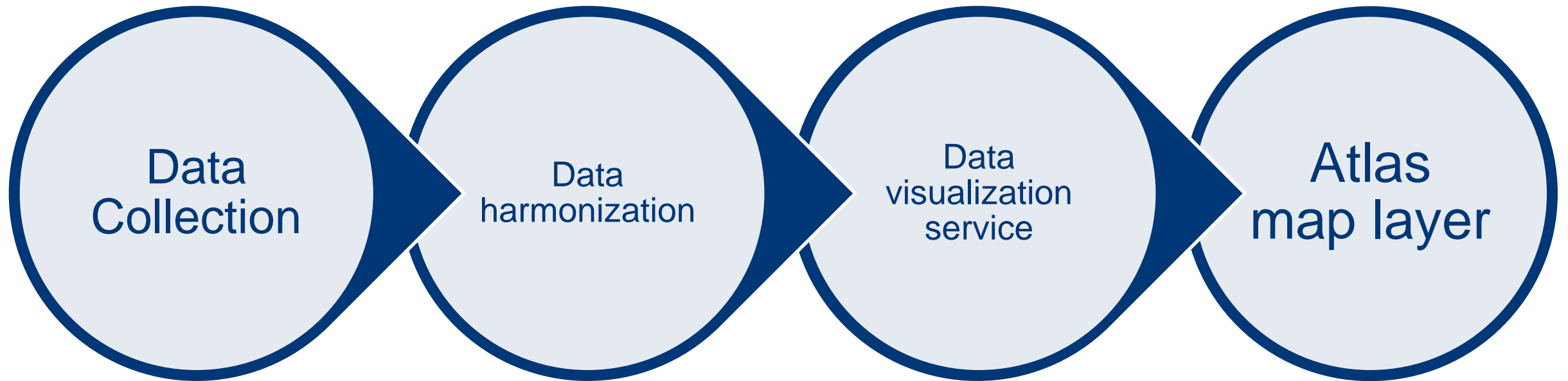


**Panel discussion:**  
Discover the story  
behind the Atlas'  
map layers!



[www.european-atlas-of-the-seas.eu](http://www.european-atlas-of-the-seas.eu)

# The story behind the Atlas' map layers!

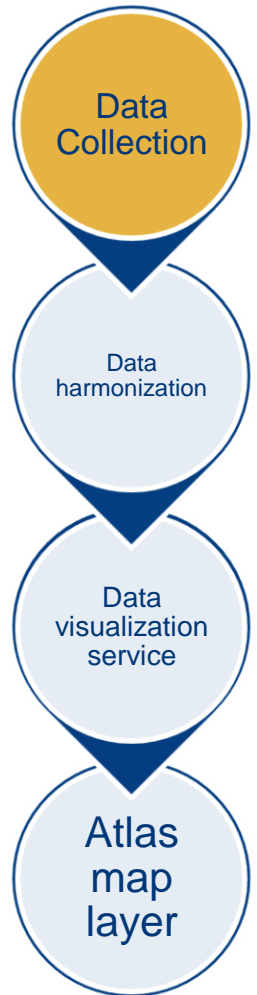


# Marine Data Collection



Tim Collart

*EMODnet Secretariat*



« Ce document est extrait du site Internet de l'Ifremer. Informations protégées - Tous droits réservés © Ifremer 2021 »

[www.european-atlas-of-the-seas.eu](http://www.european-atlas-of-the-seas.eu)

# Marine Data Collection



*Oceanographic vessels*

*Underwater vehicles*

*Fishing vessels*

*Coastal monitoring*

*Aerial observations*

*Satellite observations*

*Drifting buoys*

*Argo floats*

*Underwater gliders*

*Seafloor observations*

*Animal tagging & tracking*

Data  
Collection

Data  
harmonization

Data  
visualization  
service

Atlas  
map  
layer



« Ce document est extrait du site Internet de l'Ifremer. Informations protégées -  
Tous droits réservés © Ifremer 2021 »

[www.european-atlas-of-the-seas.eu](http://www.european-atlas-of-the-seas.eu)

# Marine Data Collection



*Oceanographic vessels*

*Underwater vehicles*

*Fishing vessels*

*Coastal monitoring*

*Aerial observations*

*Satellite observations*

*Drifting buoys*

*Argo floats*

*Underwater gliders*

*Seafloor observations*

*Animal tagging & tracking*

Data  
Collection

Data  
harmonization

Data  
visualization  
service

Atlas  
map  
layer



« Ce document est extrait du site Internet de l'Ifremer. Informations protégées -  
Tous droits réservés © Ifremer 2021 »

[www.european-atlas-of-the-seas.eu](http://www.european-atlas-of-the-seas.eu)

# Marine Data Collection



*Oceanographic vessels*

*Underwater vehicles*

*Fishing vessels*

*Coastal monitoring*

*Aerial observations*

*Satellite observations*

*Drifting buoys*

*Argo floats*

*Underwater gliders*

*Seafloor observations*

*Animal tagging & tracking*

Data  
Collection

Data  
harmonization

Data  
visualization  
service

Atlas  
map  
layer



« Ce document est extrait du site Internet de l'Ifremer. Informations protégées -  
Tous droits réservés © Ifremer 2021 »

[www.european-atlas-of-the-seas.eu](http://www.european-atlas-of-the-seas.eu)

# Marine Data Collection



*Oceanographic vessels*

*Underwater vehicles*

*Fishing vessels*

*Coastal monitoring*

*Aerial observations*

*Satellite observations*

*Drifting buoys*

*Argo floats*

*Underwater gliders*

*Seafloor observations*

*Animal tagging & tracking*

Data  
Collection

Data  
harmonization

Data  
visualization  
service

Atlas  
map  
layer



« Ce document est extrait du site Internet de l'Ifremer. Informations protégées -  
Tous droits réservés © Ifremer 2021 »

[www.european-atlas-of-the-seas.eu](http://www.european-atlas-of-the-seas.eu)

# Marine Data Collection



*Oceanographic vessels*

*Underwater vehicles*

*Fishing vessels*

*Coastal monitoring*

*Aerial observations*

*Satellite observations*

*Drifting buoys*

*Argo floats*

*Underwater gliders*

*Seafloor observations*

*Animal tagging & tracking*

Data  
Collection

Data  
harmonization

Data  
visualization  
service

Atlas  
map  
layer



« Ce document est extrait du site Internet de l'Ifremer. Informations protégées -  
Tous droits réservés © Ifremer 2021 »

[www.european-atlas-of-the-seas.eu](http://www.european-atlas-of-the-seas.eu)



# Marine Data Collection



*Oceanographic vessels*

*Underwater vehicles*

*Fishing vessels*

*Coastal monitoring*

*Aerial observations*

*Satellite observations*

*Drifting buoys*

*Argo floats*

*Underwater gliders*

*Sea floor observations*

*Animal tagging & tracking*

Data  
Collection

Data  
harmonization

Data  
visualization  
service

Atlas  
map  
layer



« Ce document est extrait du site Internet de l'Ifremer. Informations protégées -  
Tous droits réservés © Ifremer 2021 »

[www.european-atlas-of-the-seas.eu](http://www.european-atlas-of-the-seas.eu)

# Marine Data Collection



*Oceanographic vessels*

*Underwater vehicles*

*Fishing vessels*

*Coastal monitoring*

*Aerial observations*

*Satellite observations*

*Drifting buoys*

*Argo floats*

*Underwater gliders*

*Seafloor observations*

*Animal tagging & tracking*

Data  
Collection

Data  
harmonization

Data  
visualization  
service

Atlas  
map  
layer



« Ce document est extrait du site Internet de l'Ifremer. Informations protégées -  
Tous droits réservés © Ifremer 2021 »

[www.european-atlas-of-the-seas.eu](http://www.european-atlas-of-the-seas.eu)

# Marine Data Collection



*Oceanographic vessels*

*Underwater vehicles*

*Fishing vessels*

*Coastal monitoring*

*Aerial observations*

*Satellite observations*

*Drifting buoys*

*Argo floats*

*Underwater gliders*

*Seafloor observations*

*Animal tagging & tracking*

Data  
Collection

Data  
harmonization

Data  
visualization  
service

Atlas  
map  
layer



« Ce document est extrait du site Internet de l'Ifremer. Informations protégées -  
Tous droits réservés © Ifremer 2021 »

[www.european-atlas-of-the-seas.eu](http://www.european-atlas-of-the-seas.eu)

# Marine Data Collection



*Oceanographic vessels*

*Underwater vehicles*

*Fishing vessels*

*Coastal monitoring*

*Aerial observations*

*Satellite observations*

*Drifting buoys*

*Argo floats*

*Underwater gliders*

*Seafloor observations*

*Animal tagging & tracking*

Data  
Collection

Data  
harmonization

Data  
visualization  
service

Atlas  
map  
layer



« Ce document est extrait du site Internet de l'Ifremer. Informations protégées -  
Tous droits réservés © Ifremer 2021 »

[www.european-atlas-of-the-seas.eu](http://www.european-atlas-of-the-seas.eu)

# Marine Data Collection



*Oceanographic vessels*

*Underwater vehicles*

*Fishing vessels*

*Coastal monitoring*

*Aerial observations*

*Satellite observations*

*Drifting buoys*

*Argo floats*

*Underwater gliders*

*Seafloor observations*

*Animal tagging & tracking*

Data  
Collection

Data  
harmonization

Data  
visualization  
service

Atlas  
map  
layer



« Ce document est extrait du site Internet de l'Ifremer. Informations protégées -  
Tous droits réservés © Ifremer 2021 »

[www.european-atlas-of-the-seas.eu](http://www.european-atlas-of-the-seas.eu)

# Marine Data Collection



*Oceanographic vessels*

*Underwater vehicles*

*Fishing vessels*

*Coastal monitoring*

*Aerial observations*

*Satellite observations*

*Drifting buoys*

*Argo floats*

*Underwater gliders*

*Seafloor observations*

*Animal tagging & tracking*

Data  
Collection

Data  
harmonization

Data  
visualization  
service

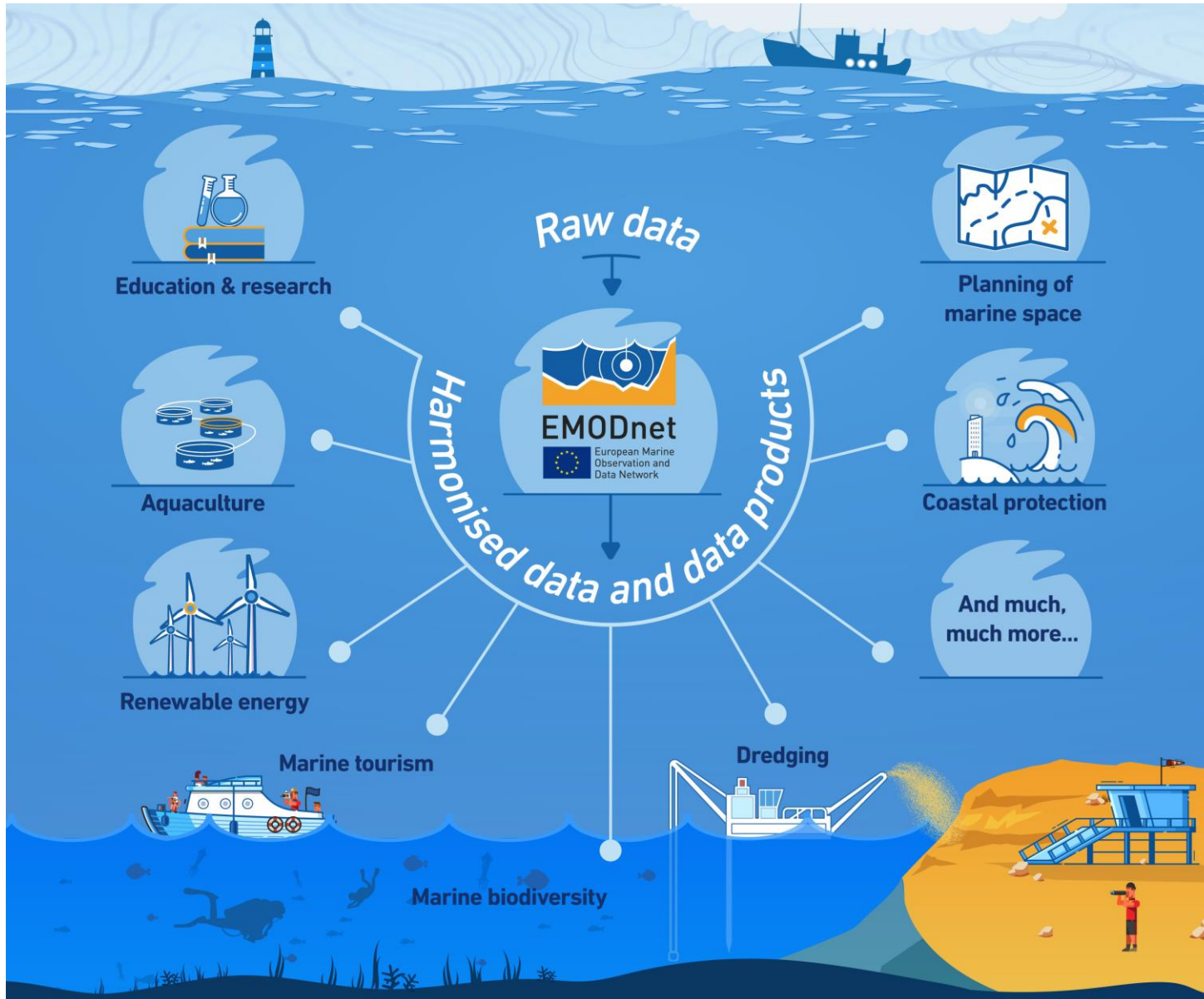
Atlas  
map  
layer



« Ce document est extrait du site Internet de l'Ifremer. Informations protégées -  
Tous droits réservés © Ifremer 2021 »

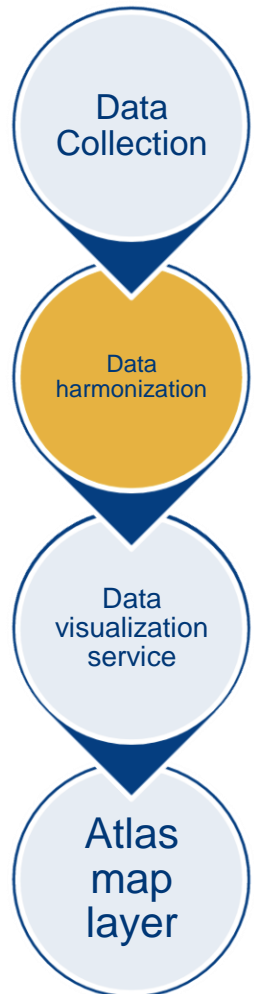
[www.european-atlas-of-the-seas.eu](http://www.european-atlas-of-the-seas.eu)

# Marine Data Harmonization



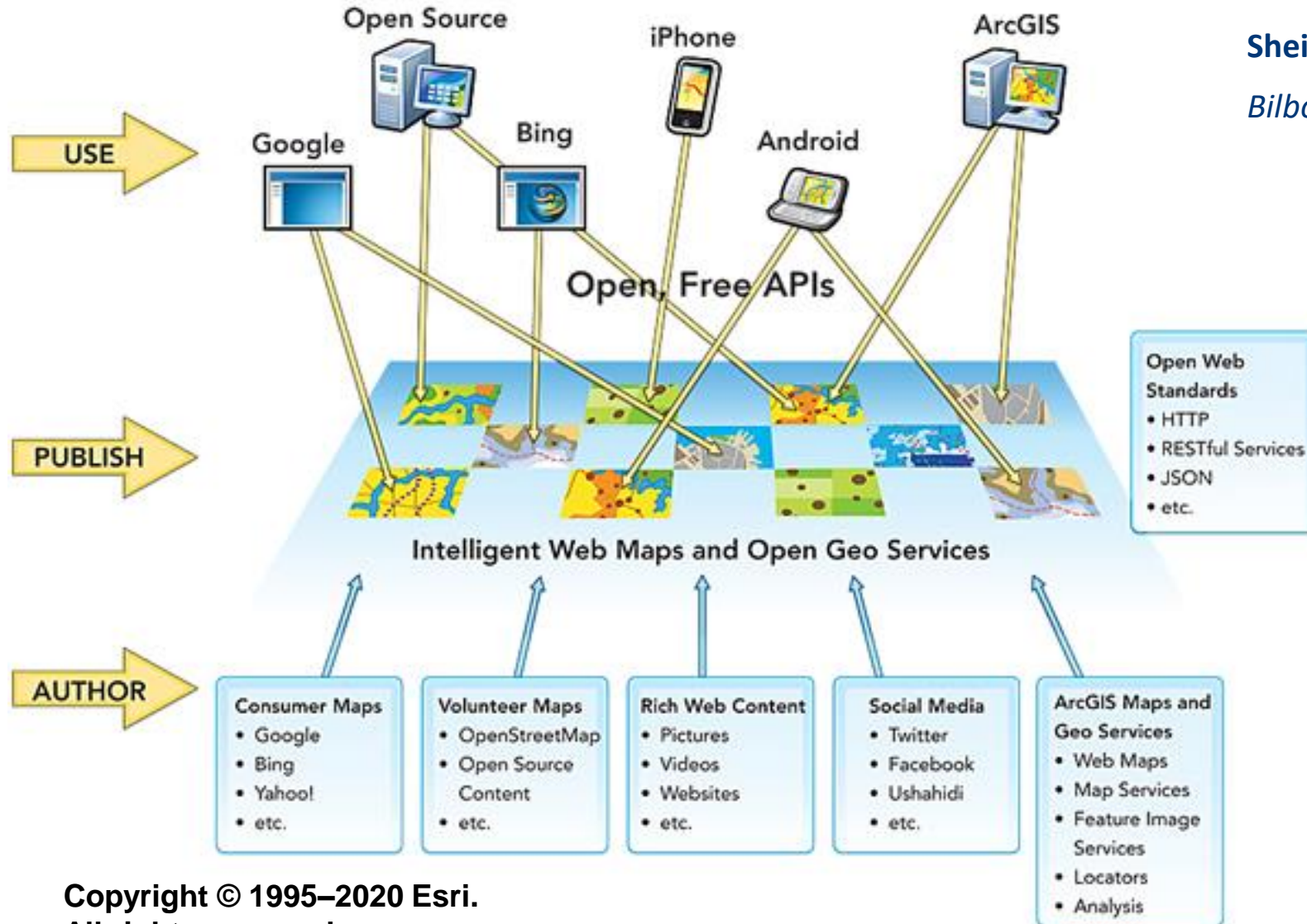
Alessandro Pititto

*EMODnet Human Activities*



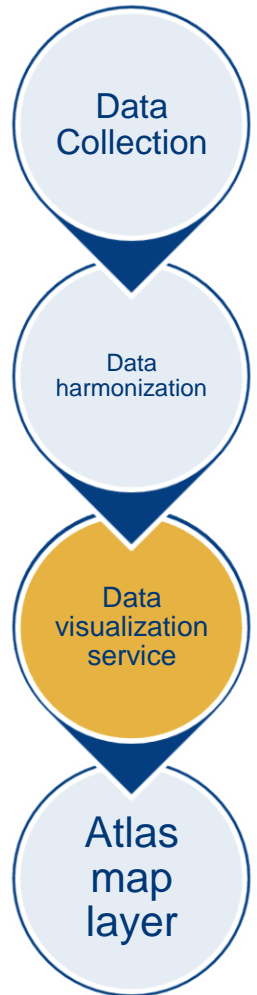
[www.european-atlas-of-the-seas.eu](http://www.european-atlas-of-the-seas.eu)

# Data visualization services



Sheila García Martínez

*Bilbomatica*



Copyright © 1995–2020 Esri.

All rights reserved.

Published in the United States of America.

[www.european-atlas-of-the-seas.eu](http://www.european-atlas-of-the-seas.eu)

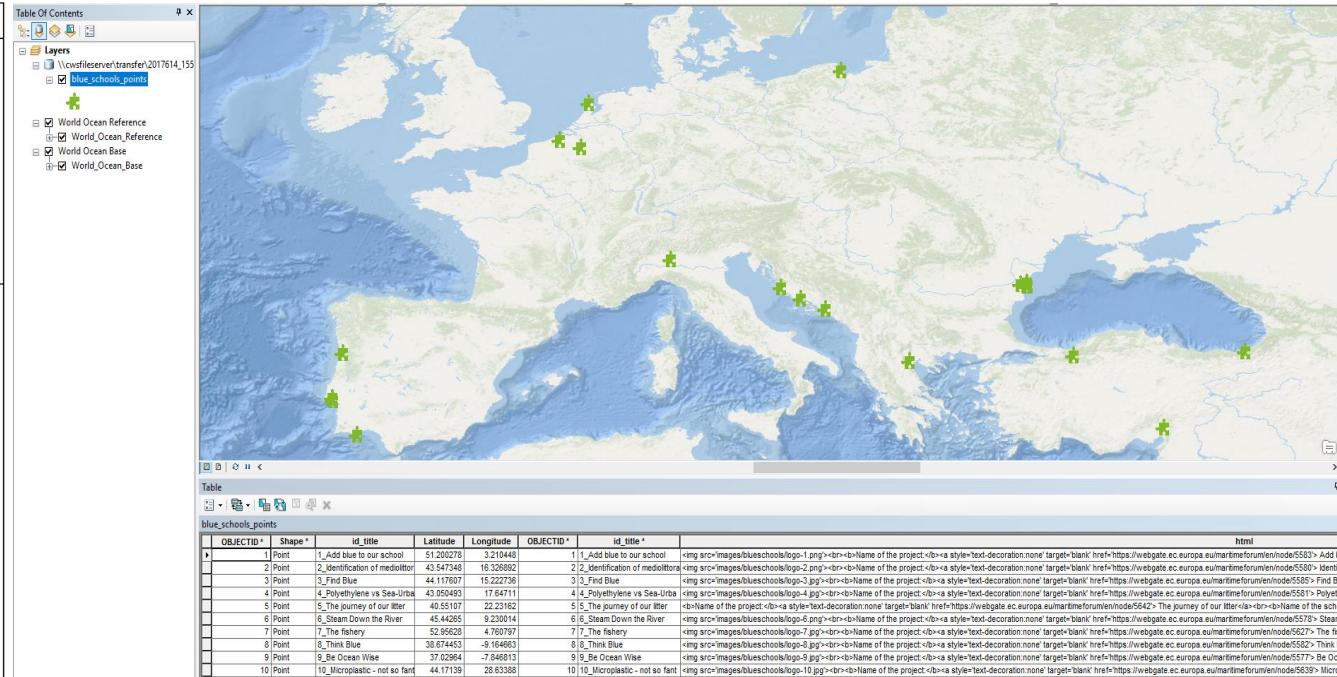


# Data visualization services

## Quality of the data

REQUEST PHASE	
Objective	<p><b>Definition of the objective:</b> This map provides an overview of the schools that are member of the Network of European Blue Schools.</p> <p><b>Note:</b> Please provide any additional comments regarding the objective</p>
Data requirements	<p><b>Data Format that will be provided:</b></p> <p><input checked="" type="checkbox"/> Excel/CSV file  <input type="checkbox"/> XML file  <input type="checkbox"/> Shape file  <input type="checkbox"/> Raster file  <input type="checkbox"/> Data source Link(s)                      Please provide the link(s)</p> <p><b>Coordinate reference system:</b>                      In case you provide a spatial data file please, specify the relevant coordinate reference system.  <input checked="" type="checkbox"/> Geographic coordinates (Lat/Long in decimal degrees) EPSG:4326  <input type="checkbox"/> Projected coordinates Please provide the EPSG code</p> <hr/> <p><b>Number of requested layers: one</b></p> <p><b>Layer title:</b> Network of European Blue Schools</p> <p><b>Layer description:</b> The Network of European Blue Schools is part of the EU4Ocean Coalition and aims to inspire teachers, school directors or staff of education services, to challenge their students, from kindergarten, primary, lower and upper secondary, technical or vocational schools, to <i>Find the Blue</i> and develop a project that links them to the ocean or the sea.</p> <p><b>Requested base layer / base map:</b>  <input type="checkbox"/> No <input checked="" type="checkbox"/> Yes ESRI Water Template</p> <hr/> <p><b>Legend</b></p> <p>Following fields specify what quantity/attribute of the data is displayed on the map and what legend style (e.g. colorscale, symbols) is used.</p> <p><b>Legend quantity:</b> European Blue School</p> <p><b>Legend unit:</b> N/A</p> <p><b>Legend period:</b> N/A</p> <p><b>Legend style description:</b> See image</p>

## Visualization: User experience guidelines using GIS tools

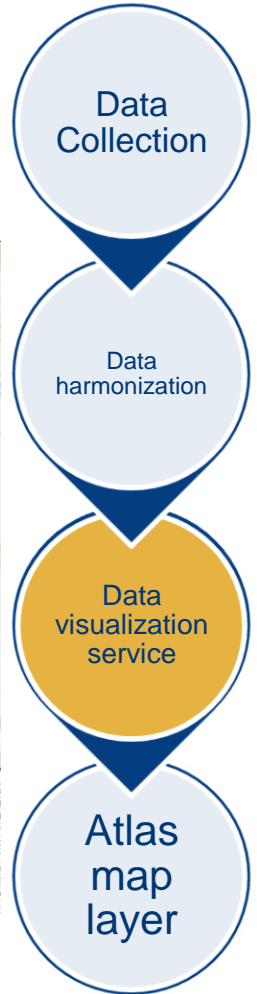


## Publication of the data: Map services

- REST services under EEA GIS server
- WMS/WMTS under OGC standards



[www.european-atlas-of-the-seas.eu](http://www.european-atlas-of-the-seas.eu)

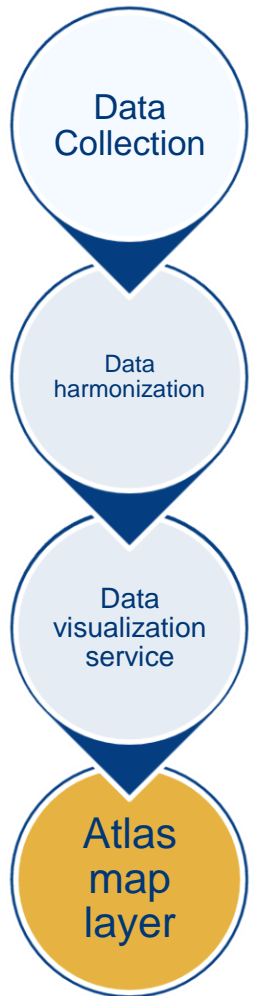


# Atlas map layer creation



Clara Becares & Josu OIaso Imaz

*Bilbomatica*



[www.european-atlas-of-the-seas.eu](http://www.european-atlas-of-the-seas.eu)

# Takeaways

- Each map layer in the atlas is the result of several steps.
- Each step requires different competences and skills.
- The maps in the atlas are the product of teamwork. Experts across Europe are involved in the different steps and are working together to deliver easy access to high quality information on the ocean and seas.

