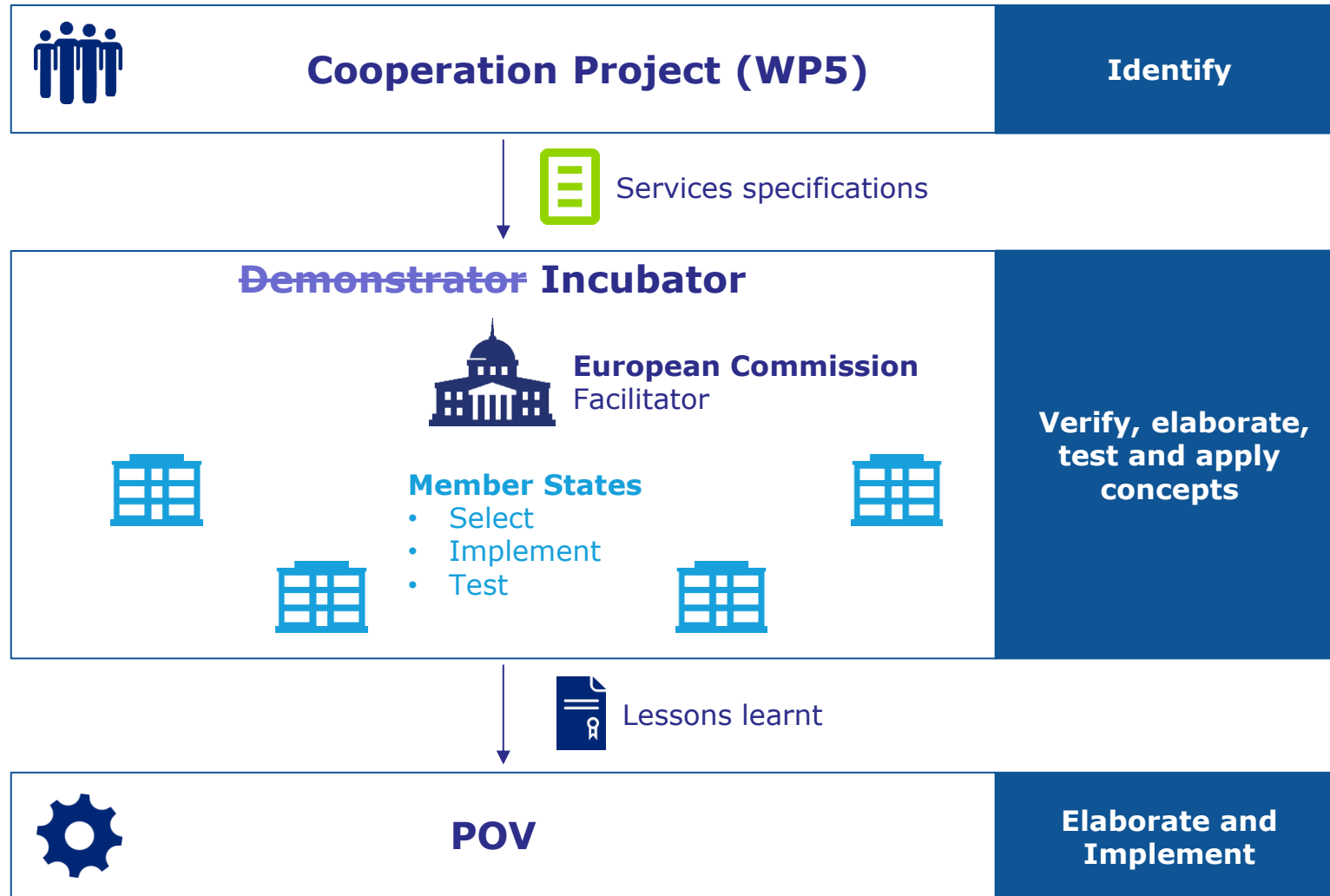




CISE Demonstrator

Vincent Dijkstra

DG Informatics (DIGIT)
vincent.dijkstra@ec.europa.eu





In scope

Verify, elaborate, test and apply the concepts of WP5 of the Cooperation Project to exchange information between a Service Consumer and a Service Provider

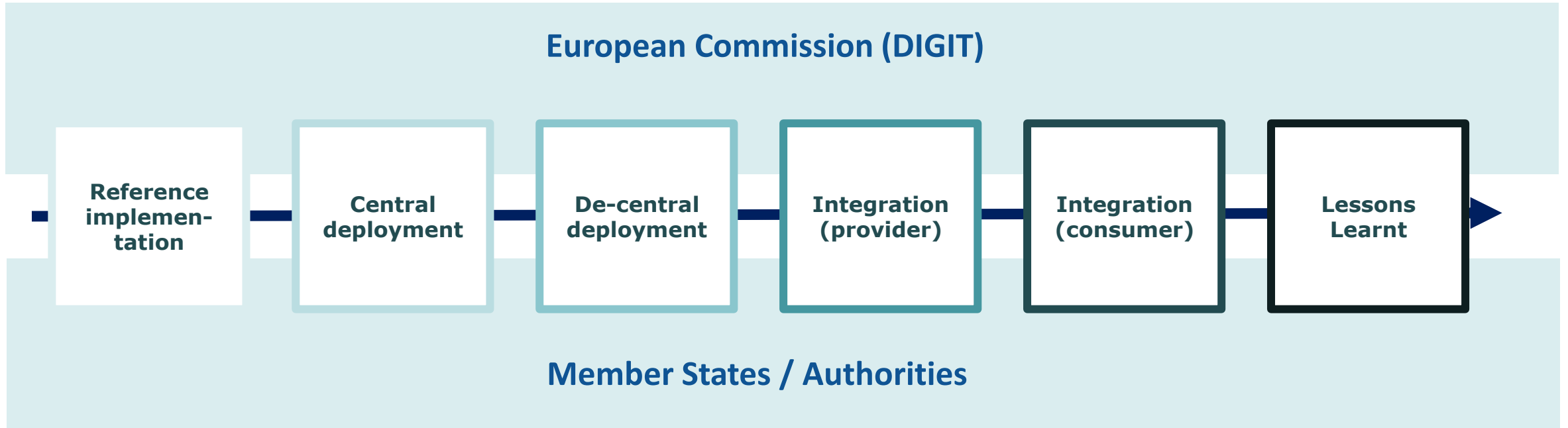
Out of scope

Service registry

Access and identity management

Security

Infrastructure services (enterprise services)





■ Bottom-up Approach

Considering the amount of services specified by WP2, it would not be feasible to specify all services necessary. Therefore it was decided to take a **bottom-up approach focused on the core data entities**.

(WP5 Final Report, § 4.2.2 – Service Catalogue)

■ Service Model

To ensure consistency, reusability and extensibility of the CISE technologies, it is **useful to define a model for these services** which is **independent** of their content and function in the context of a specific activity or use case. This allows parties to easily develop new business services which are automatically **compatible and interoperable** with existing ones, and which can be easily integrated into the CISE network.

(WP5 Final Report, § 4.2.3 – Service Model)

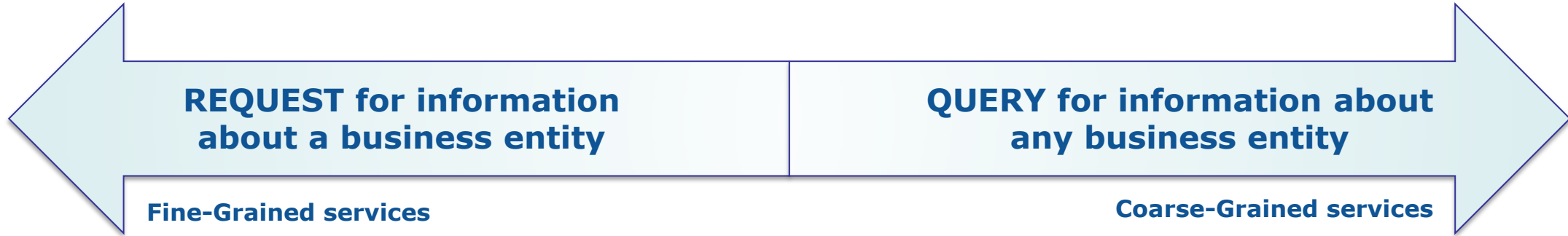


GRANULARITY

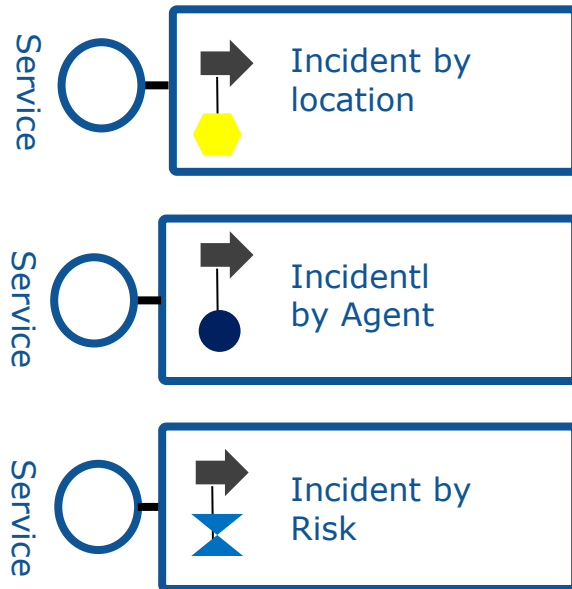
MODEL

**EXCHANGE
PATTERNS**

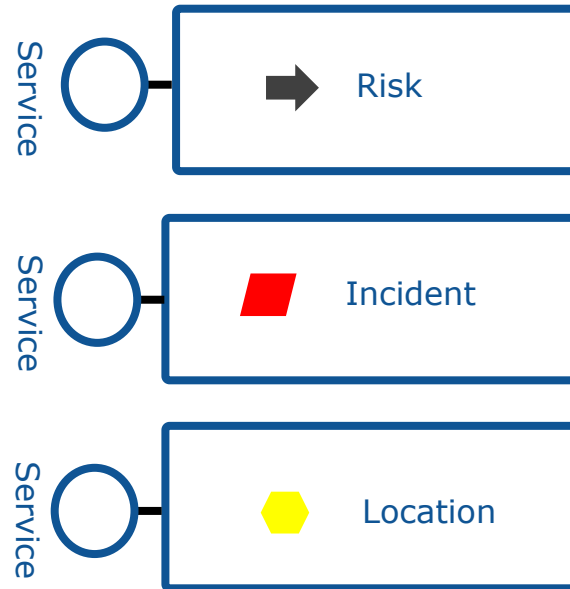
Service Granularity



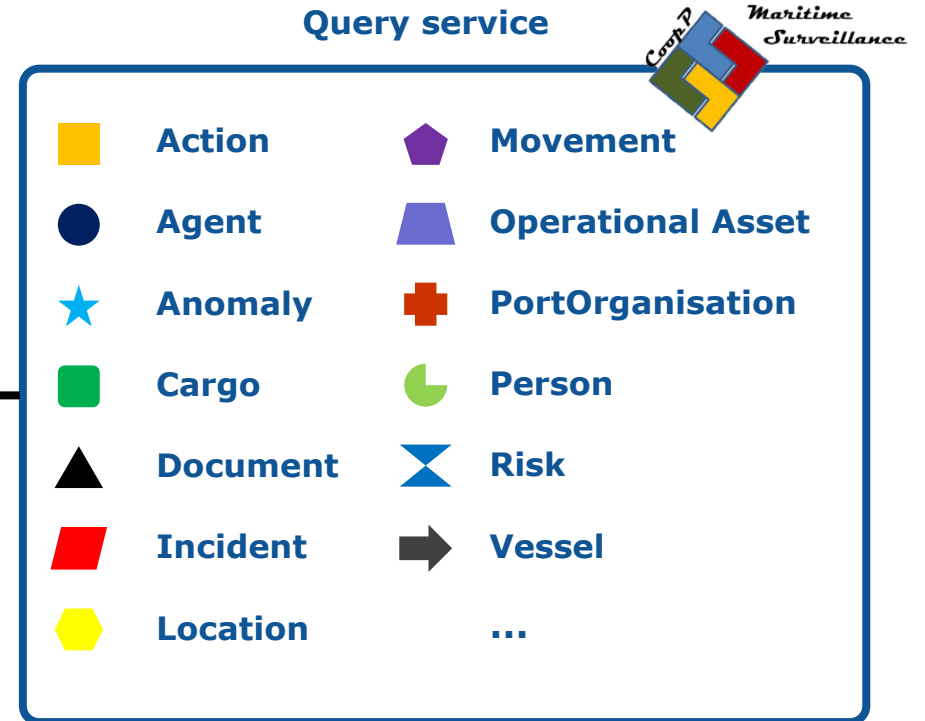
Alternative I – Task services

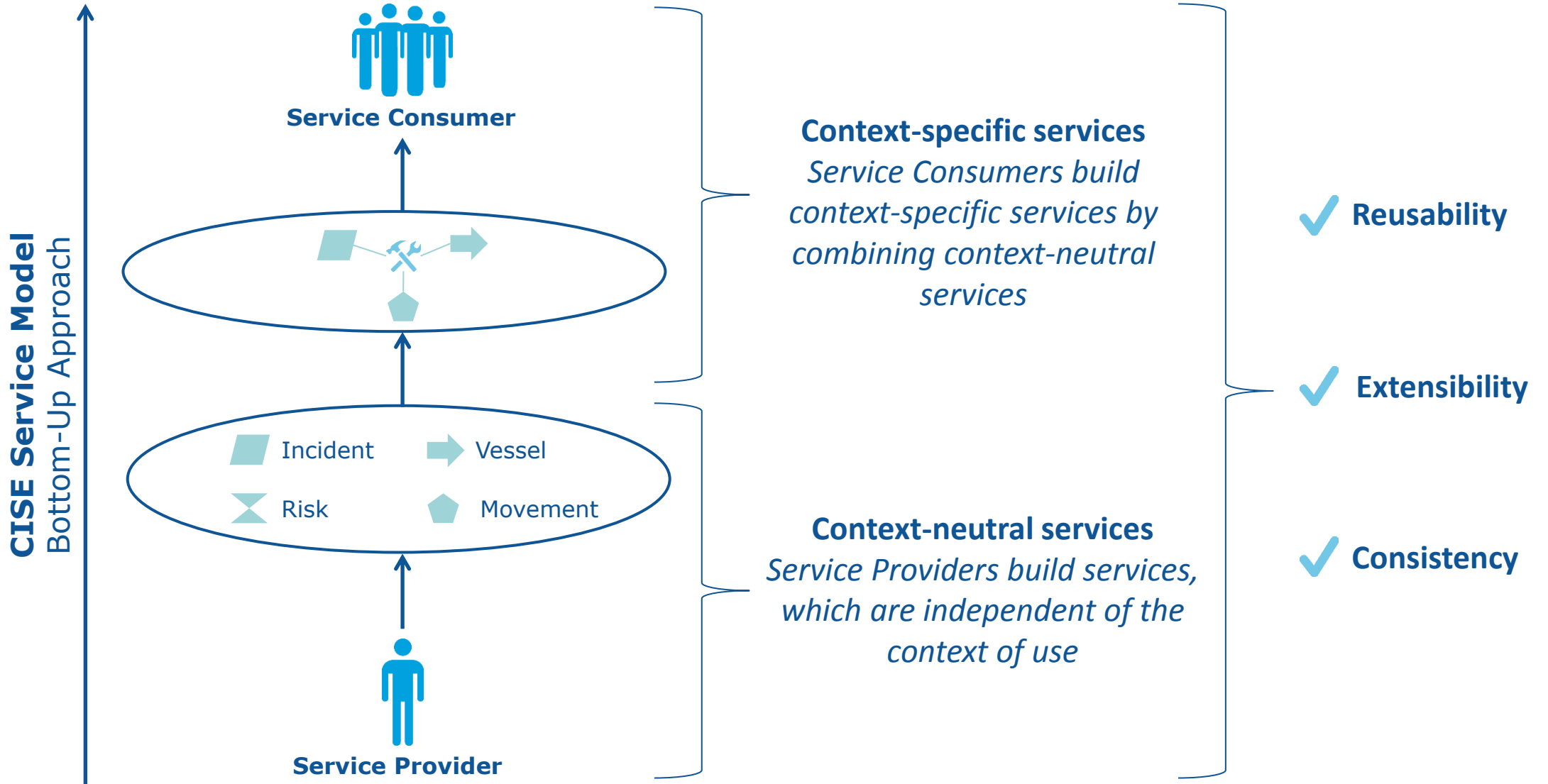


Alternative II – Entity services



Query service







Search Services

Looking up all entities that match a set of criteria

E.g. Find all Incidents in a specific area, and ..., and ... or ...



Request to a single service provider

Resource Services

Find all information available for a specific entity

E.g. retrieve all available details of a specific Incident



Request to a single service provider

Broadcast Services

Find all entities that match a set of criteria

E.g. find all Incidents of a specific risk



Request to all service providers that support a given entity service



- **What does a search operation return ?**

- Best or Exact match of identified data ?
- What is the definition of a best match ?
- Google like solution (following keywords not found)?

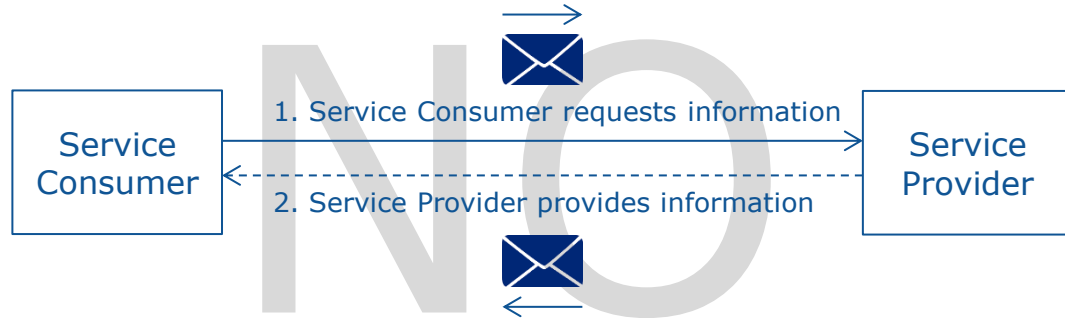
- **How to manage data volume ?**

- Retrieve any data up to 1 MB ?
- Retrieve first "x" elements meeting search criteria (support range concept) ?

- **What service pattern should be applied**

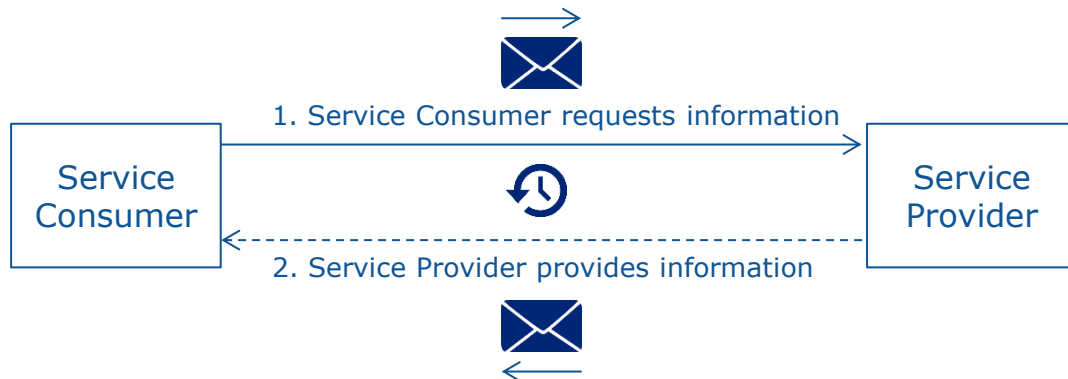
- Return all/partial details of every entity meeting the criteria ?

Message Exchange Patterns

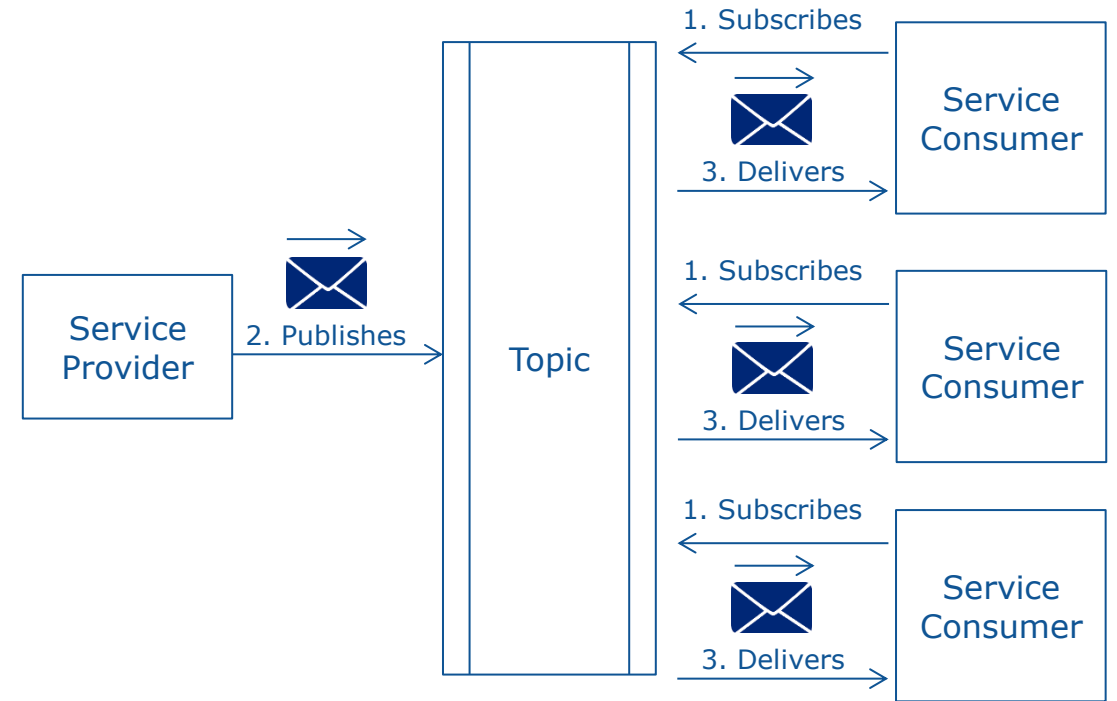


❖ **Pull** (one service provider)

❖ **Broadcast Pull** (multiple service providers)

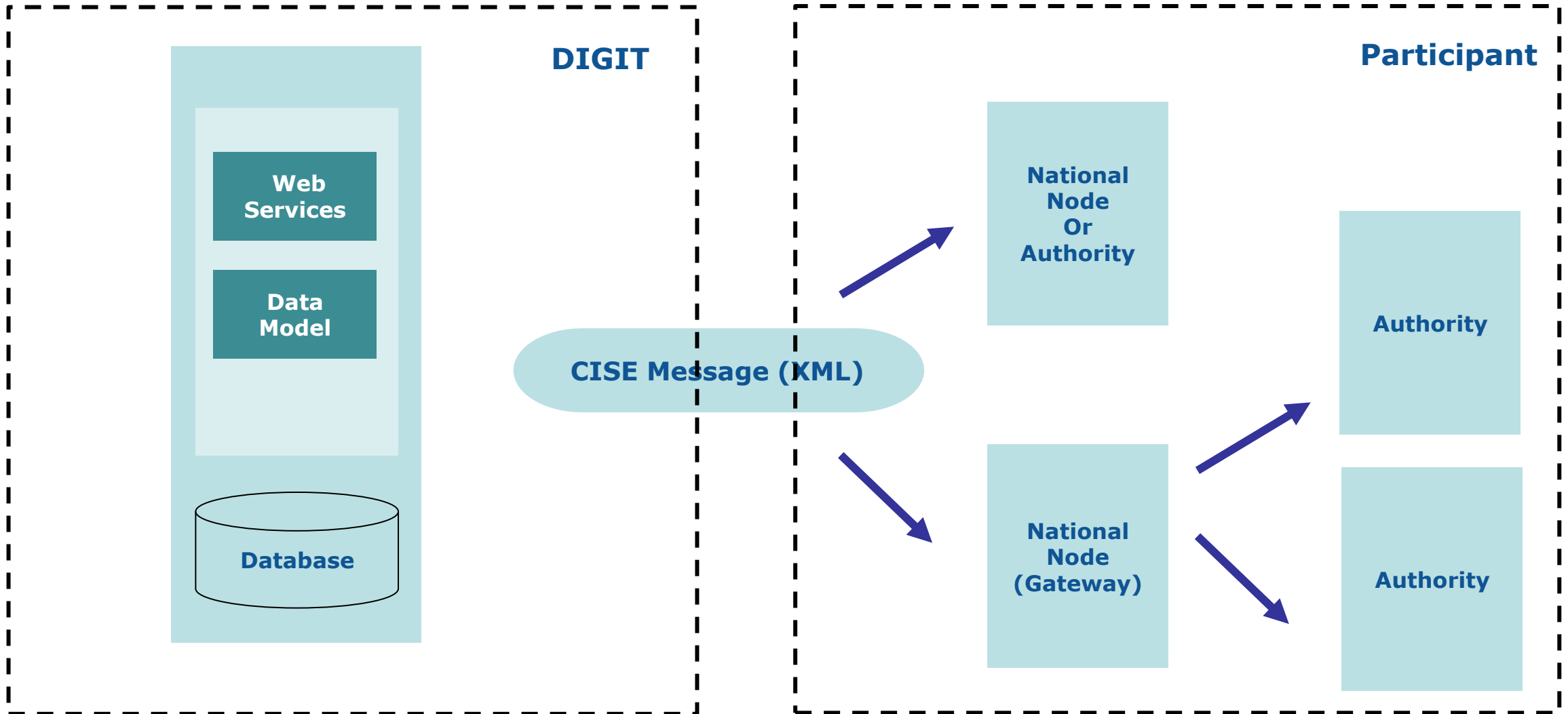


❖ **Pull Delayed**

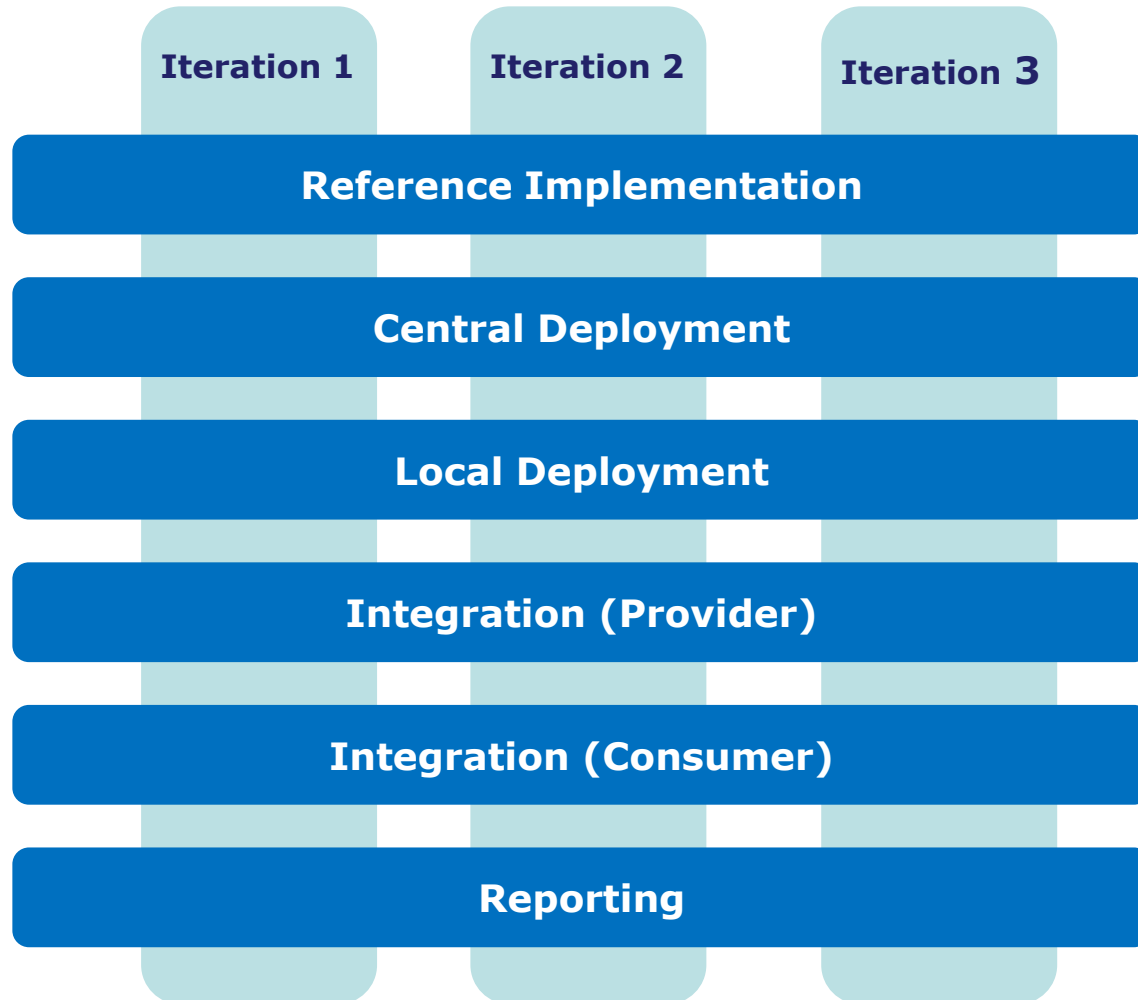


❖ **Push** (one service provider)

❖ **Broadcast Push** (multiple service providers)



Provided as Virtual Image



Iterations

- 31 /03/2014 – 25/04/2014
- 05 /05/2014 – 30/05/2014
- 09 /06/2014 – 04/07/2014

