

EMODnet Bathymetry



<https://emodnet-bathymetry.eu/>

Who we are ?

- Hydrographic offices
- Research institutes
- Small and medium size enterprise

- In discussion with collaborators from Estonia, Iceland

- Bathymetry data subject to national jurisdiction (national security) -> find the right balance in terms of data delivery (resolution, licence, ...)



Bathymetric metadata

- Each polygon/poly-line shows the bathymetric coverage/location
- Associated Metadata (INSPIRE compatible, ISO 19115- based upon an unified and agreed thesaurus – BODC held)
- Source data held by the data provider, who decide how to provide its dataset to the final user

WHAT?

Data set name: vaklodng NH-SK
Discipline: Marine geology
Terrestrial
Parameter groups: Gravity, magnetics and bathymetry
Terrestrial
Discovery parameters: Bathymetry and Elevation
GEMET-INSPIRE themes: Oceanographic geographical features
Abstract: Bathymetric data extract from bathymetric database
Data format: XYZ ASCII **Version 1.0**
Data size: 0.1
Data set creation date: 20140613

WHERE?

Map



GML id

GML objects

Datum

Measuring area type

Water depth (m)

Depth reference

Minimum instrument depth (m)

Maximum instrument depth (m)

Sea regions

msD1

Name	Description
RA16522_6132	coverage
Datum	World Geodetic System 84
Measuring area type	surface
Water depth (m)	-9999
Depth reference	Normaal Amsterdams Peil
Minimum instrument depth (m)	-9999
Maximum instrument depth (m)	-9999
Sea regions	North Sea

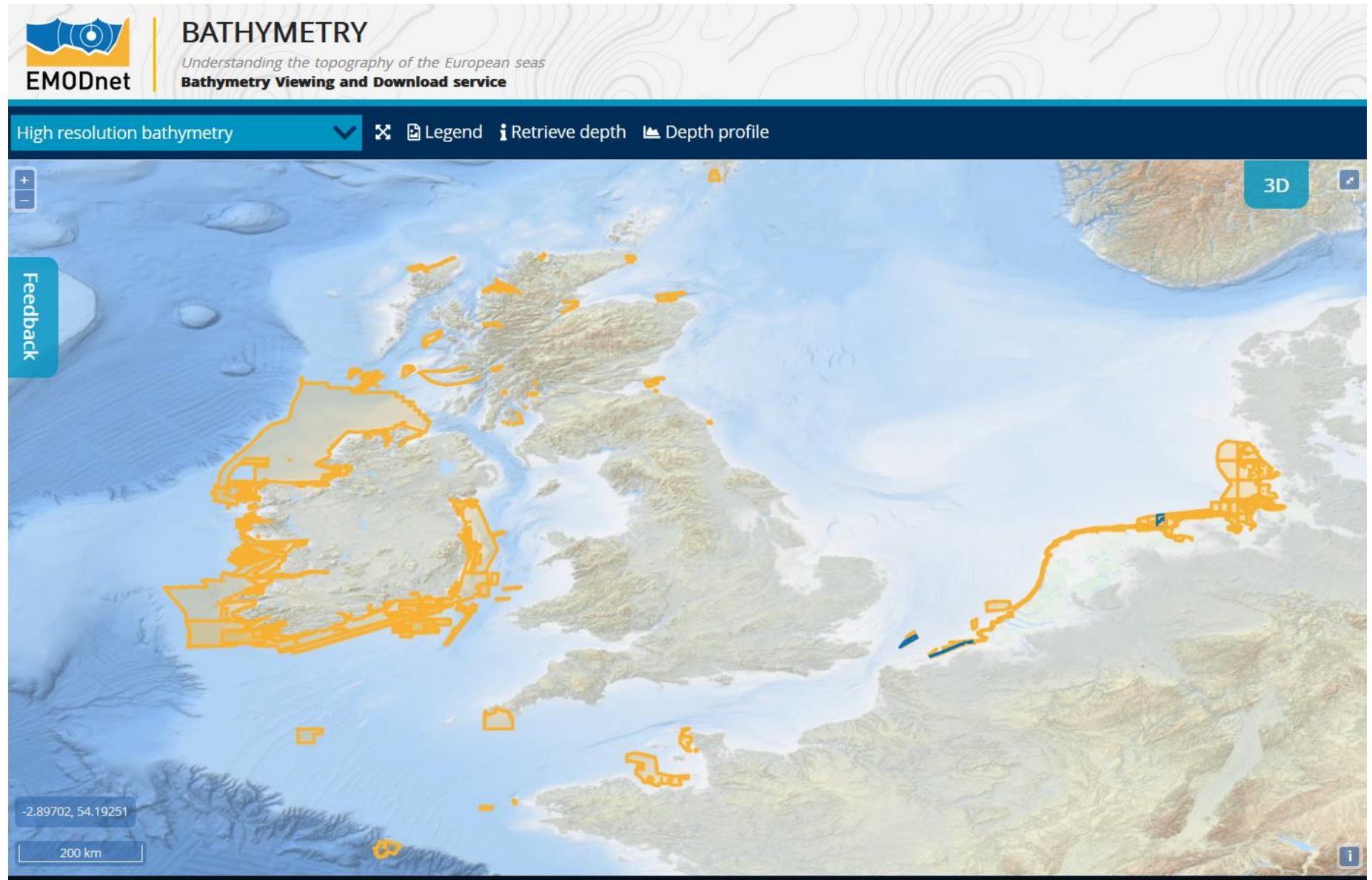
The screenshot shows the EMODnet Bathymetry Viewing and Download service interface. At the top, there is a logo for EMODnet and the text "BATHYMETRY Understanding the topography of the European seas Bathymetry Viewing and Download service". Below this is a navigation bar with options like "Survey tracks/polygons", "Retrieve metadata", "Order survey data", "Downloads", "Measure distance", and "Settings". The main area is a world map with a dense network of red lines representing bathymetric survey tracks. A "Feedback" button is visible on the left side. At the bottom left, there are coordinates (-3.07974, -4.66997) and a 2000 km scale bar.

EMODnet Bathymetry DTM

- 1/16 arc-minute (approx. 100m)
- Built from data from partners (HO, Oceanographic centers, private partners)
- DOI, free of charge, free to use
- Available at MSL and LAT

The screenshot displays the EMODnet Bathymetry DTM web application interface. At the top left, the EMODnet logo is shown next to the text "BATHYMETRY" and the tagline "Understanding the topography of the European seas". Below this is the "Bathymetry Viewing and Download service" header. The main navigation bar includes a dropdown menu for "Mean depth full coverage", a "Legend" icon, "Retrieve depth", and "Depth profile" options. On the right side of the navigation bar are links for "Downloads", "Measure distance", "Settings", and "Help". The central part of the interface is a world map showing bathymetry data with a grid overlay. A "3D" button is visible in the top right corner of the map area. On the left side of the map, there is a "Feedback" button. The bottom left corner of the map shows the coordinates "0.20640, -4.94272" and a "5000 km" scale bar. On the right side of the interface, there are two sections: "Dataset type" with buttons for "DTM Tiles", "High resolution areas", and "Area of interest"; and "DTM version" with buttons for "2016", "2018", and "2020". A yellow button at the bottom of this section says "Select your area(s) on the map".

HR DTM



- > 200 High resolution DTM (resolution up to the m)

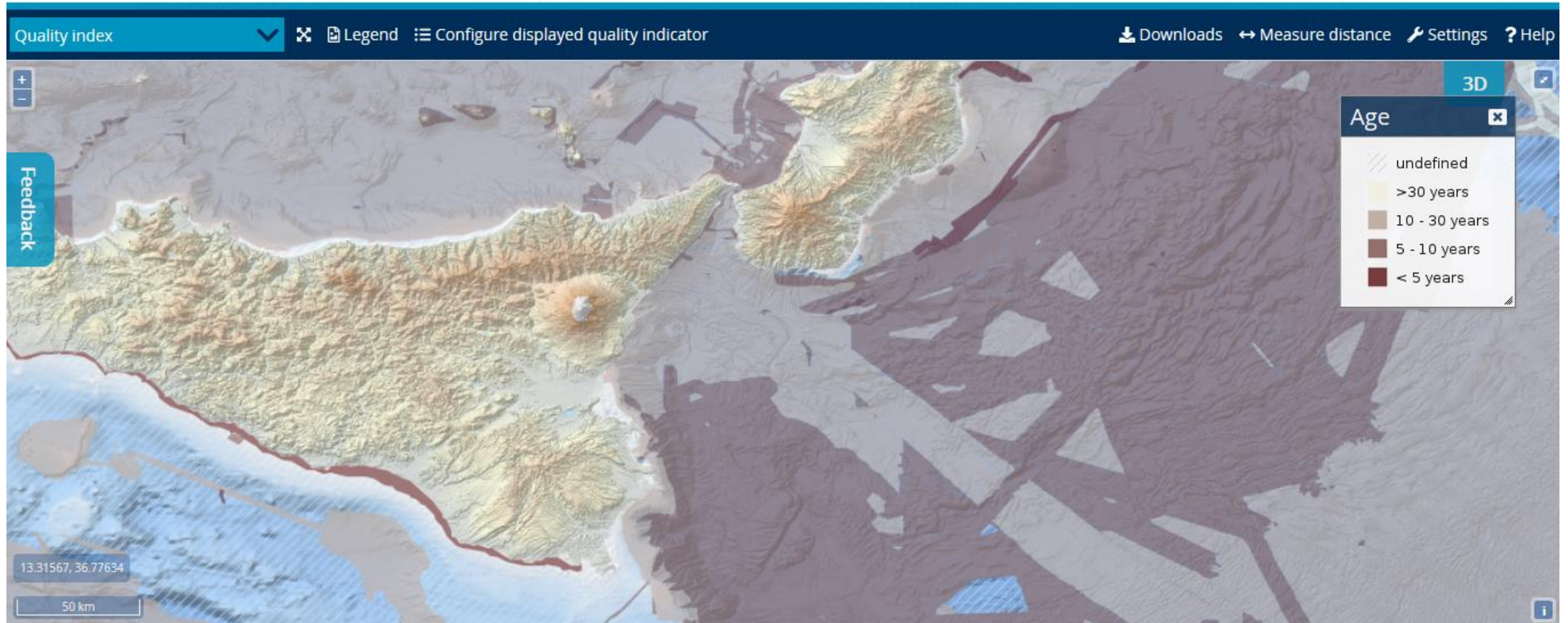
HR DTM

 **BATHYMETRY**
Understanding the topography of the European seas
Bathymetry Viewing and Download service



• > 200 High resolution DTM (resolution up to the m)

Quality layer



EMODnet Bathymetry coverage for the Mediterranean and Black Seas

