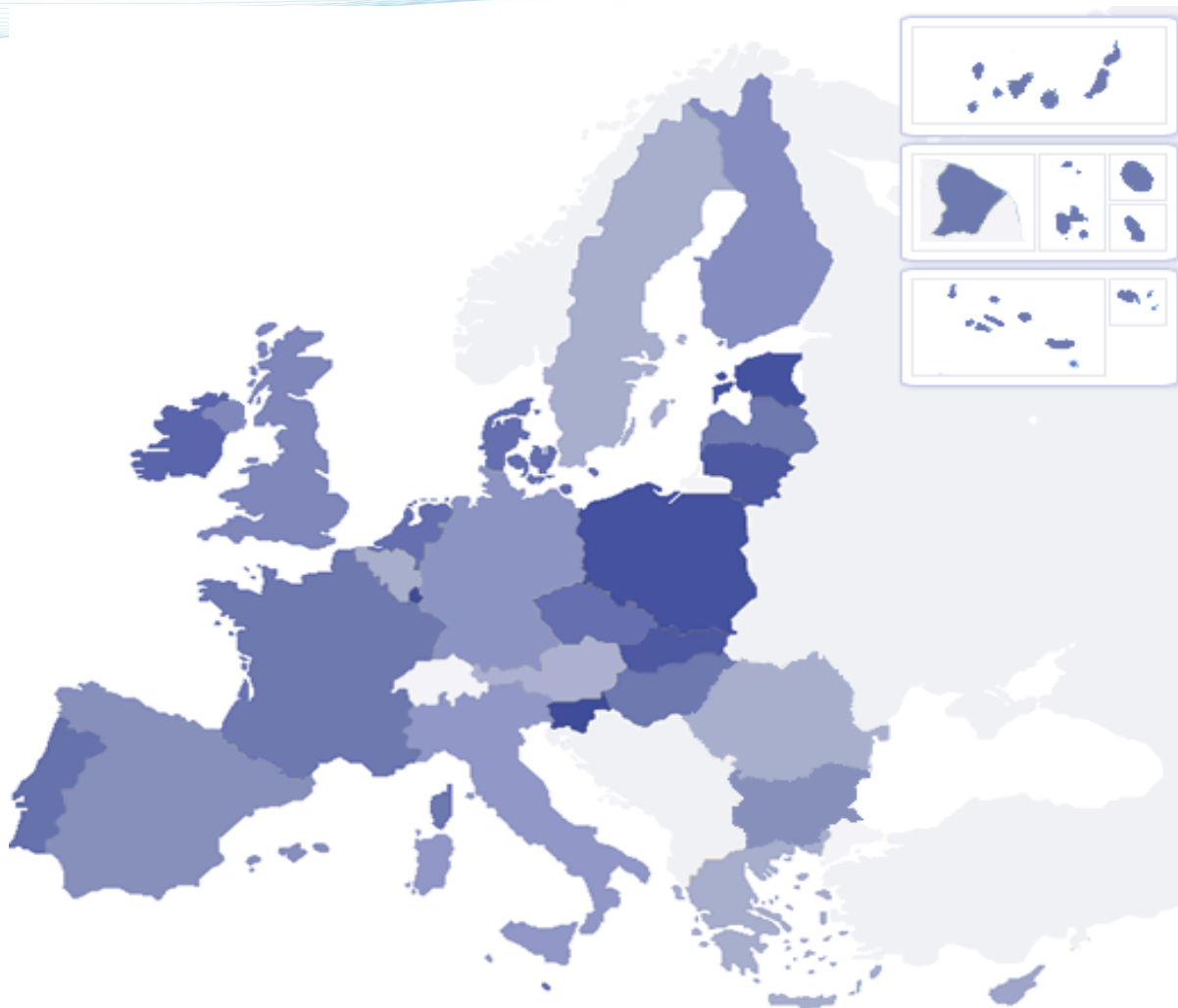


# Towards a European programme of hydrography



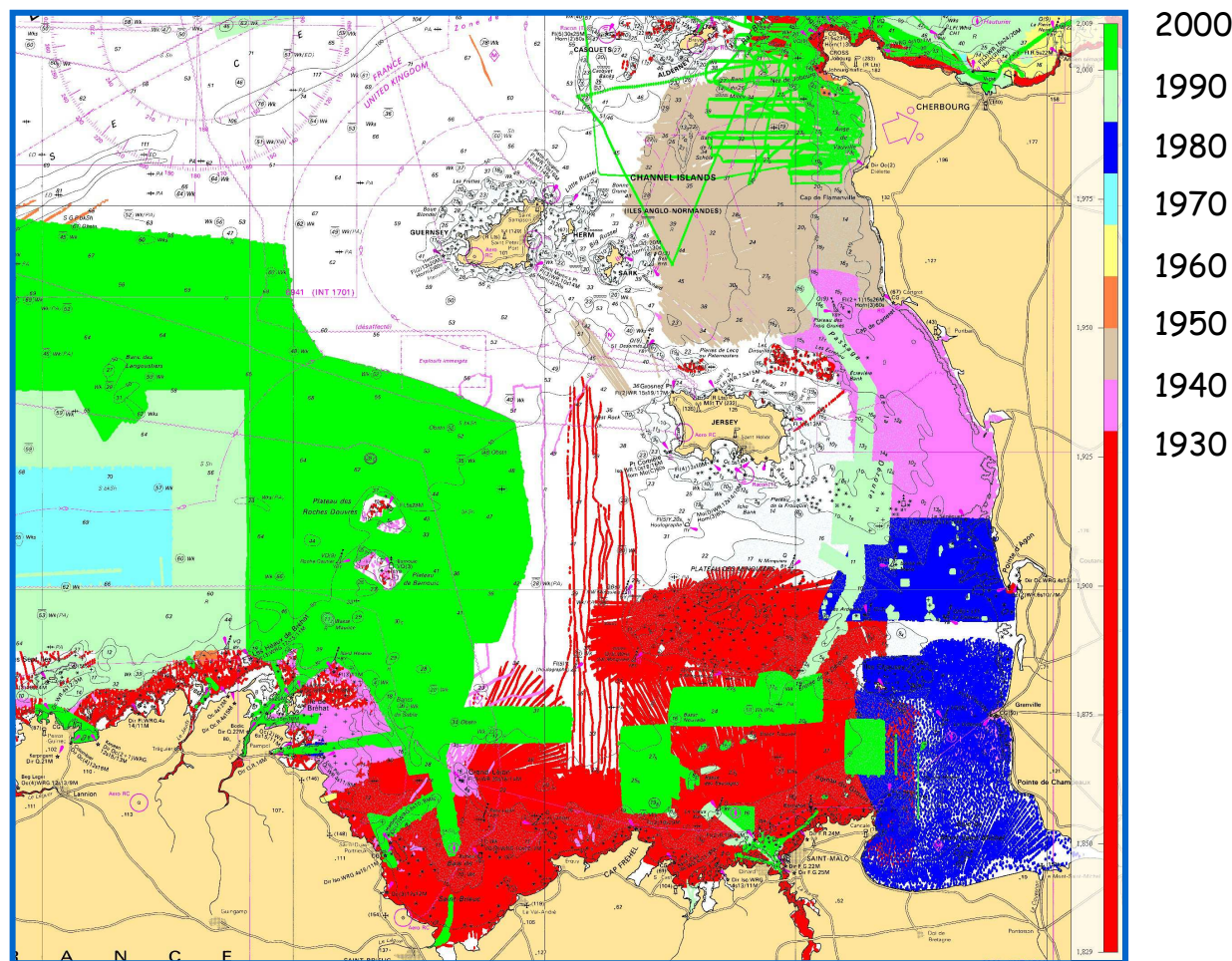
## State of knowledge (English Channel)

**More than 200 years  
of hydrographic  
knowledge**

*- Mais, dans certaines zones,  
la connaissance est  
parcellaire*

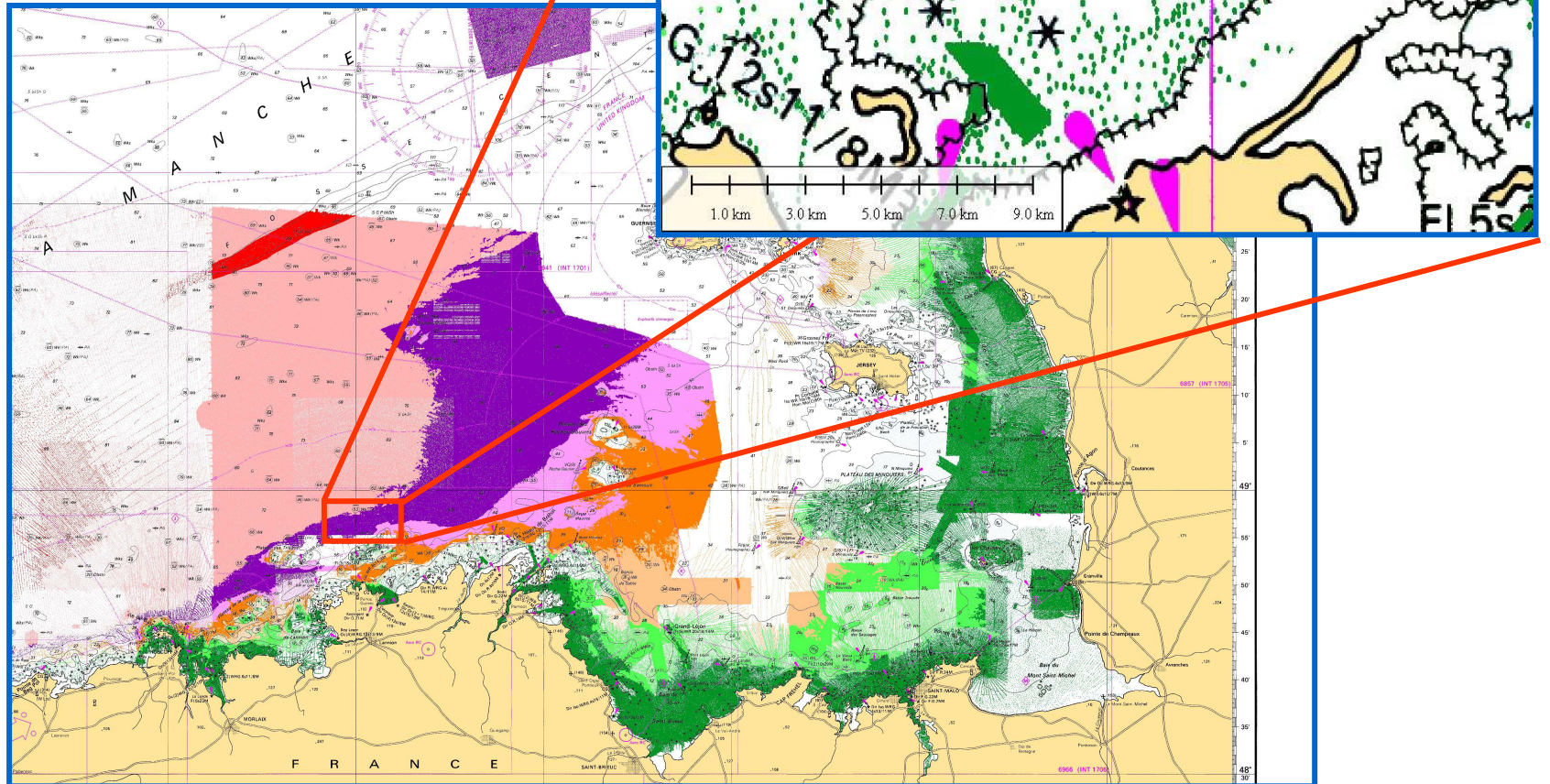
*- dans certaines zones, la  
connaissance est ancienne*

*-... et donc la connaissance  
est parfois inadaptée aux  
besoins actuels.*



# State of knowledge (English Channel)

Données « au plomb de sonde »  
parcellaires  
Ci-dessous ouest des Héaux de Bréhat ;  
en deçà de l'isobathe 20m des sondes au  
mieux tous les 300m. Des zones > 1km<sup>2</sup>  
sans sonde !



## Needs of navigation

**Les objectifs à satisfaire sont synthétisés et traduits en niveau de connaissance selon la norme de l'OHI S-44.**

*-les zones critiques correspondant aux ports, chenaux d'accès, zones de mouillage et voies recommandées, avec profondeur sous quille minimale ou par fonds potentiellement dangereux et par fonds inférieurs à 40m*

***levé d'ordre spécial ;***

*-les zones d'intérêt particulier correspondant aux ports, chenaux d'accès, voies recommandées, zones de mouillage autres que ceux définis ci-dessus*

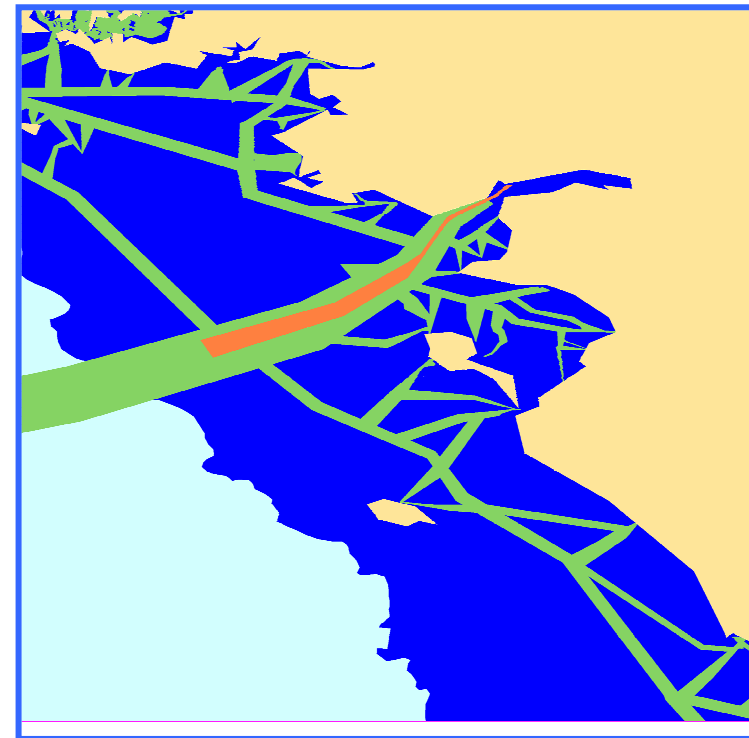
***levé d'ordre 1a ;***

*- les zones côtières de la côte à l'isobathe 50m*

***levé d'ordre 1b ;***

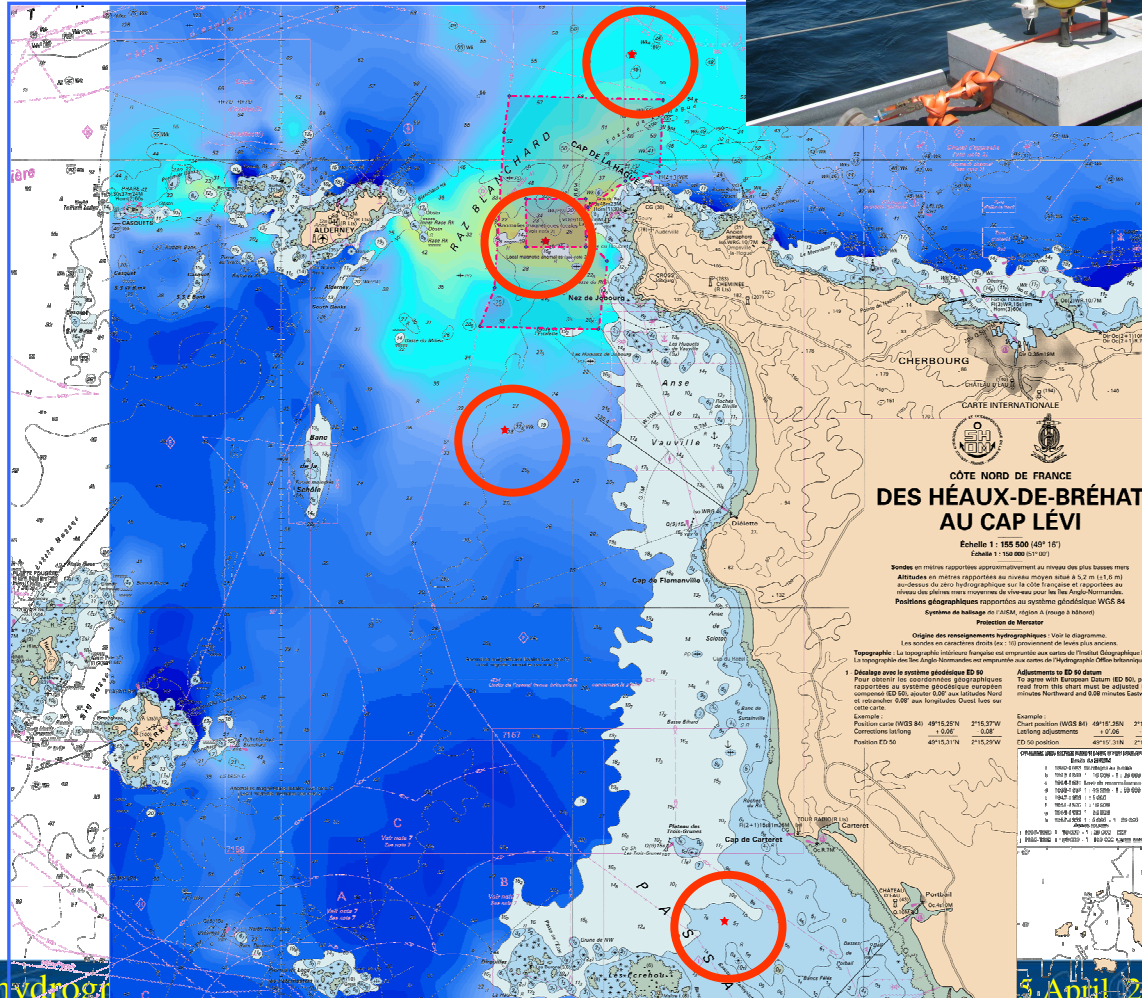
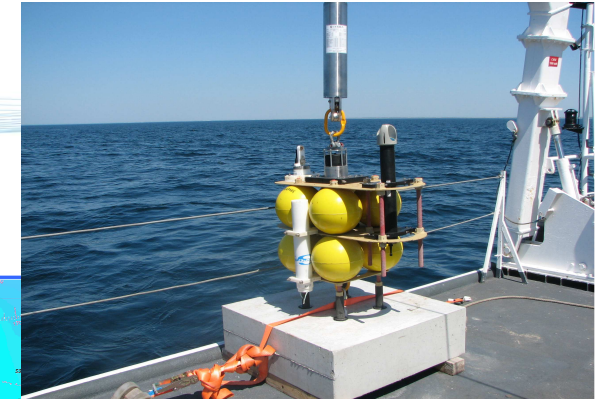
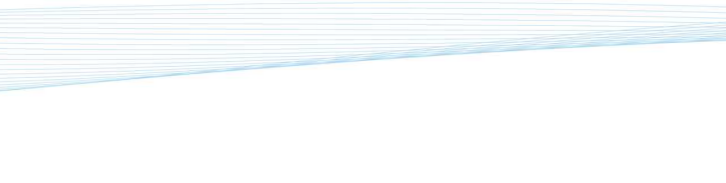
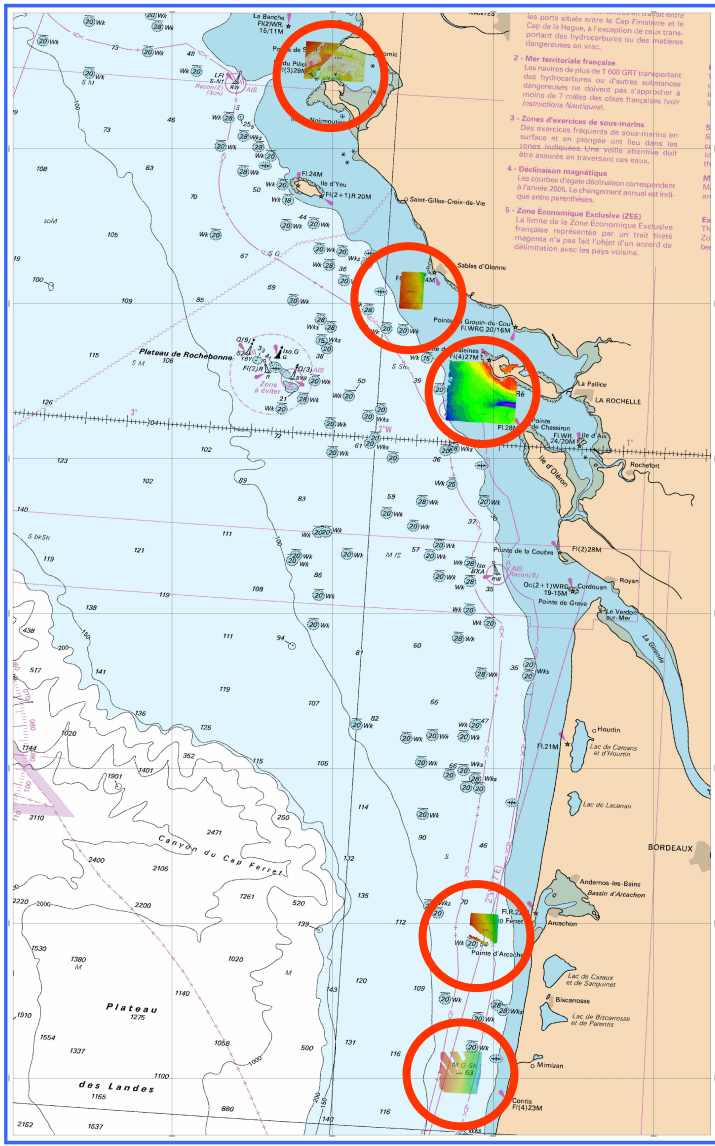
*- au-delà de l'isobathe 50m*

***levé d'ordre 2.***



exemple aux abords de Saint-Nazaire

# Atlantique – Manche : Mesures de courant nécessaires à l'amélioration des modèles



SHOM Towards a European programme of hydrography

5 April 2013

Position des mesures sur modèle existant des courants

# Regional programmes of hydrography

Status

- Not Started
- In Progress
- Finished
- Unknown

200km

Helsinki Commission

Welcome to the Public Site of the HELCOM Hydrographic Re-Survey-plan.

Performed and monitored by the memberstates of The Baltic Sea Hydrographic Commission in accordance with the Copenhagen Declaration decided in 2001 and the Moscow Helcom declaration 2010.

Duplication of information presented on these pages is not allowed unless permission is obtained from the respective national authority.

This website is developed and managed by The Swedish Maritime Administration by order of the The Baltic Sea Hydrographic Commission. For more information please contact us at <http://www.sjofartsverket.se>.

Section filters (reset)

Country	Section	Route/Area	Status	Priority	Category
All	All	All	All	All	All

View Map

Download section list

2.2.3 2011-sep

Powered by carmenta



## A programme to build up, needs

### Seabed mapping

- marine renewable energy
- european policies, MSFD, MSP, CIZM

### Safety of navigation

- european routes of shipping

### Other navigational needs

## A programme to build up, gaps

National programmes

Regional programmes

European programme of seabed mapping

Not a european common programme  
with homogenous assesement of  
state of knowledge vs state of needs



## A programme to build up, action plan

A1: list of existing programmes

A2: sketch organisationnal frame

A3: potential funding

A4: HOs willing to take part

B: state of knowledge

C: state of needs

D: building the programme

E implement it