




EMODnet Geology

14th EMODnet Steering Committee Meeting
Spring 2021
19-20 April

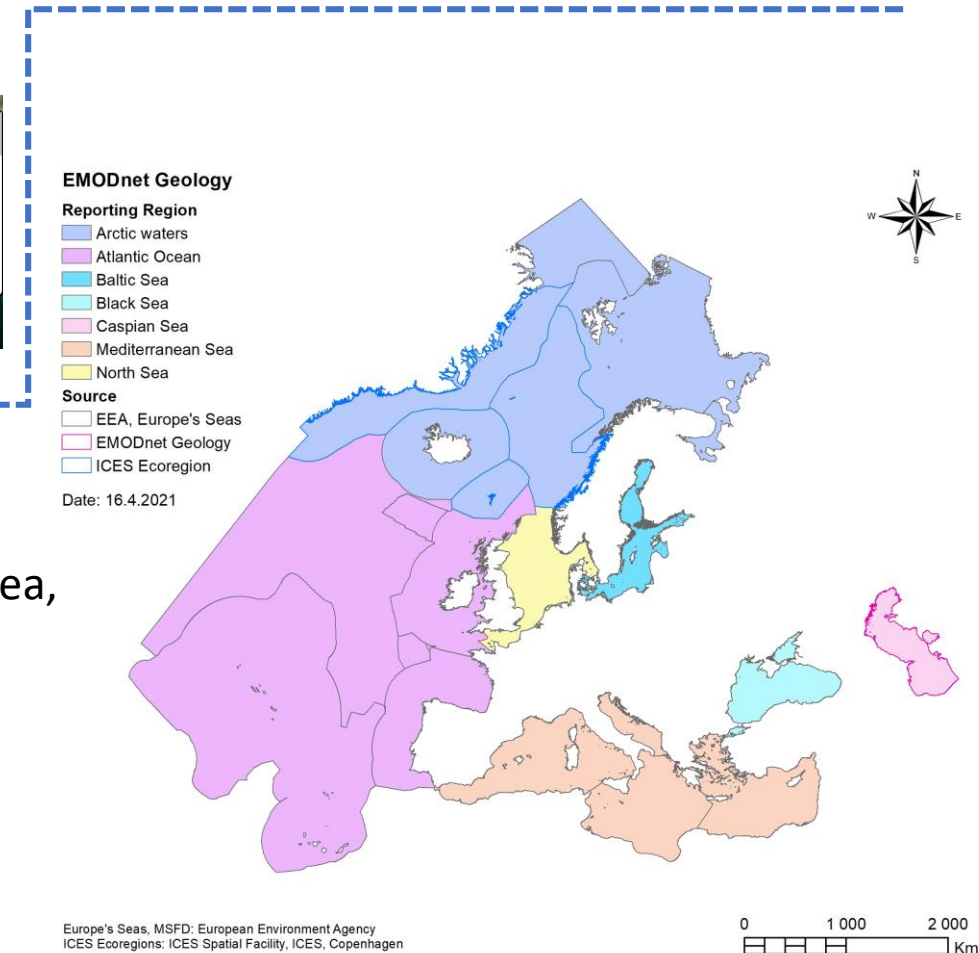
Henry Vallius (GTK)
Bjarni Pjetursson (GEUS)



<https://www.emodnet-geology.eu/>

EMODnet Thematic status update: November 2020 – April 2021

- COVID-19 hit us in many ways but has been handled mainly through adjustments and rearrangements
- New map for coastline migration based on field data and aerial photography released March 18th



- For reporting purposes EMODnet Geology Regions have been outlined with GIS :
 - The regions include Baltic Sea, Black Sea, Mediterranean sea, North Sea, Atlantic Sea, Arctic waters and Other Seas (e.g. Caspian Sea).
 - Regions are mainly based on MSFD areas (EEA dataset).
 - The Arctic waters roughly follow the delineation used by the Arctic Council for Marine Ecosystems of the Arctic Waters.
 - The Caspian sea area is provided by EMODnet Geology.

Europe's Seas, MSFD: European Environment Agency
ICES Ecoregions: ICES Spatial Facility, ICES, Copenhagen

EMODnet Cross-Thematic Interactions

- **How does your thematic interact with other EMODnet thematics?**
 - A close collaboration between EMODnet Geology and Seabed Habitats Lot has continued. Discussions e.g. on EMODnet Geology seabed substrate product, and product delivery to Seabed Habitat Lot.
- **What are the future plans e.g. April – August 2021 (e.g. EMODnet Jamboree) and longer-term?**
 - Co-operation with EMODnet Seabed Habitat Lot will continue. EMODnet Geology will deliver seabed substrate datasets (Multiscale data products, including 100k and more detailed data) to Habitat lot in June 2021.
 - During EMODnet Open Conference/Jamboree EMODnet Geology will present a poster about seabed geodiversity of the Baltic Sea. It is a cross-thematic product based on EMODnet Geology datasets on seabed substrates and bedrock as well seabed structures modelled from EMODnet Bathymetry.

External interactions

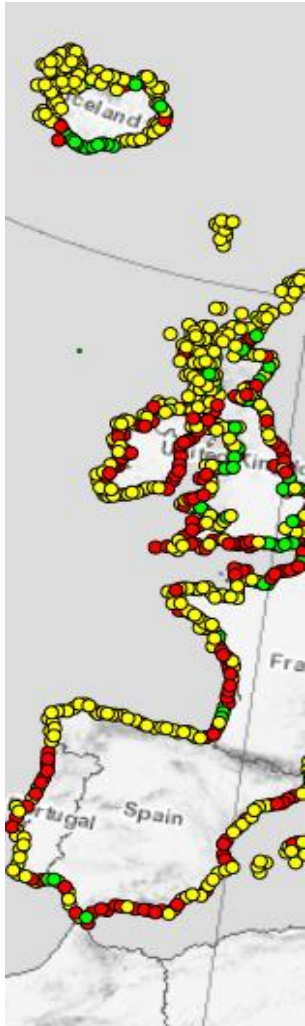
- **Geographical : National, Regional Sea (e.g. RSCs), European level (e.g. CMEMS, EEA, JRC etc), International (e.g. IOC-IODE, ICES, GEOSS etc)**
- EMODnet & Copernicus Marine Service 5th Coordination meeting 9.2.2021
- Dedicated CMEMS – EMODnet Geology session during our project meeting 10.3.2021
- **Marine/maritime sectors : Blue economy (Industry/Business), Policy, Research, Civil Society, Other:**
- Faroe Islands: EMODnet geohazard map used for evaluation of probability of tsunamis and earthquakes before opening of the new subsea Eysturoy tunnel in December 2020, pointing to known cases of tsunami events in the area.
- Estonia: The EMODnet Geology seabed substrate information was used for analyses on plans to use extracted sand from fairway dredging for beach nourishment on Hiiumaa Island.
- Spain: EMODnet-Geology products used to plan the laying of several submarine cables in the Strait of Gibraltar, the Balearic Islands and the Canary Islands. Cooperation with company CATHIE
- Croatia: The EMODnet geology data products for the Eastern Adriatic will be used for the Croatian Adriatic Marine Habitat Mapping Project (with a goal to cover 51% of Croatian Adriatic Sea) funded by the Croatian Ministry of Economics and sustainable development
- Ireland: EMODnet Geology supports offshore energy development and marine spatial planning in the Irish offshore via the EMODnet Geology portal. Guinan et al. 2020 Quarterly Journal of Engineering Geology and Hydrogeology(2020),54(1) <http://dx.doi.org/10.1144/qjegh2020-033>

Future Outlook

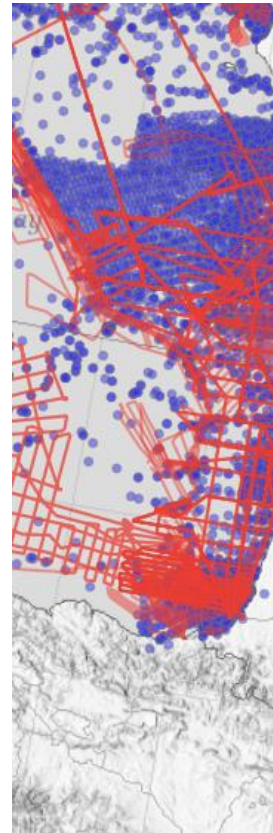
New data products release

- New coastal type map, May 27th
- New coastal vulnerability map, September 2021

March: Coastal migration from field data



April: Updated data product “Sediment Accumulation Rate”



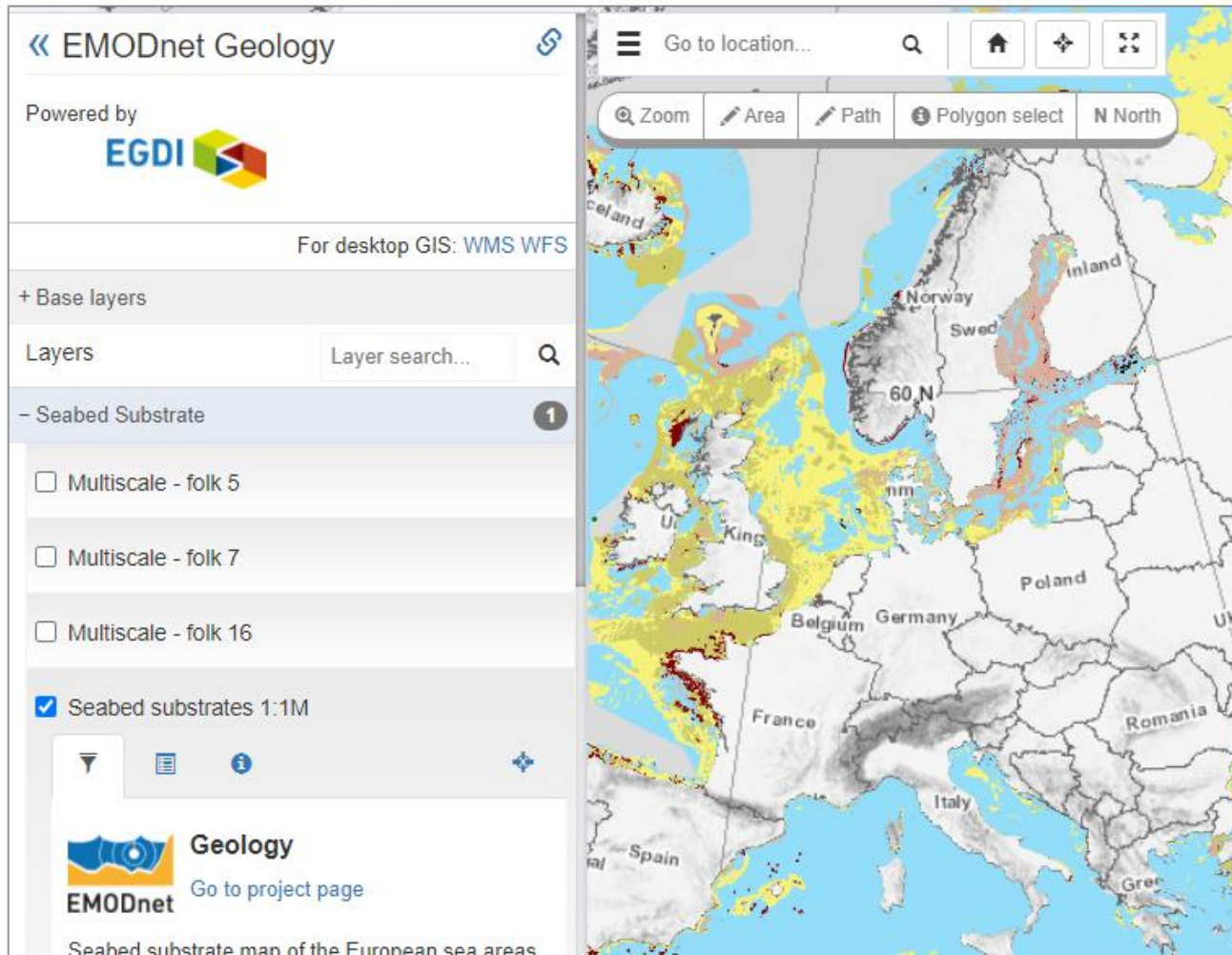
June: Update data index for boreholes/grabs and geophysical data

August: All work packages update



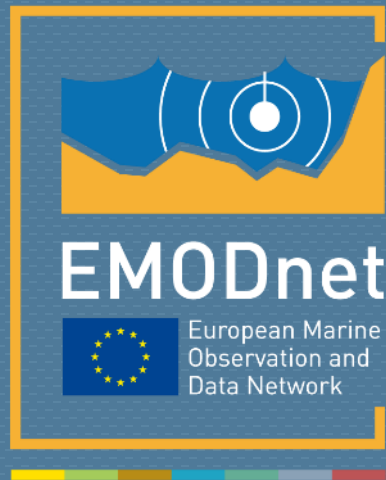
- Seabed Substrate
- Sea-floor Geology
- Coastal Behavior
- Events & Probabilities
- Marine Minerals
- Submerged Landscapes
- Entity indexes

EMODnet Thematic status update: November 2020 – April 2021



EGDI new features

- Multilevel layer indexes
- Layer search
- Add external WMS
- Measure length, area
- Download sub-area of data
- Updated base maps



@EMODnet
www.emodnet.eu

Your gateway to marine data in Europe

