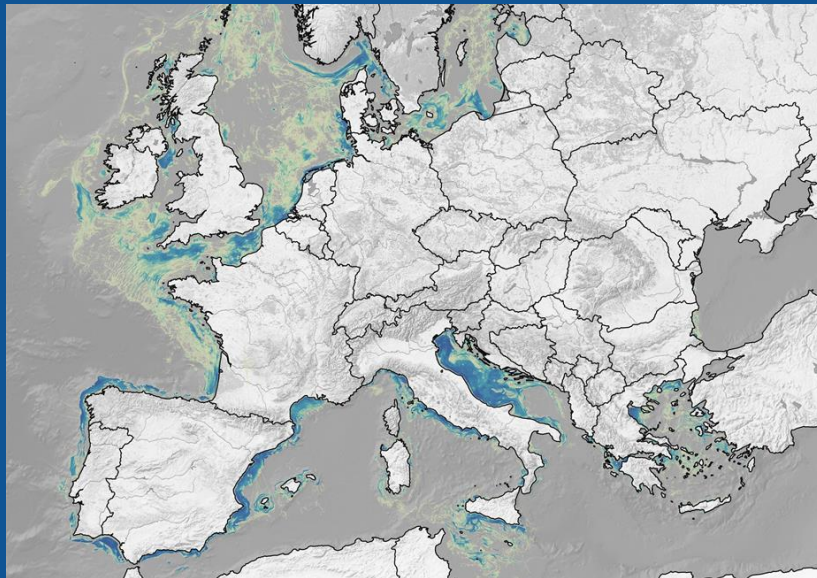


# Seabed habitats and EU trawlers fishing intensity analysis



**Alfredo Alessandrini,  
Mariagrazia Graziano,  
Michele Vespe**

{name.surname}@jrc.ec.europa.eu

**Joint Research Centre**  
the European Commission's  
in-house science service



The Blue Hub:

<https://bluehub.jrc.ec.europa.eu>

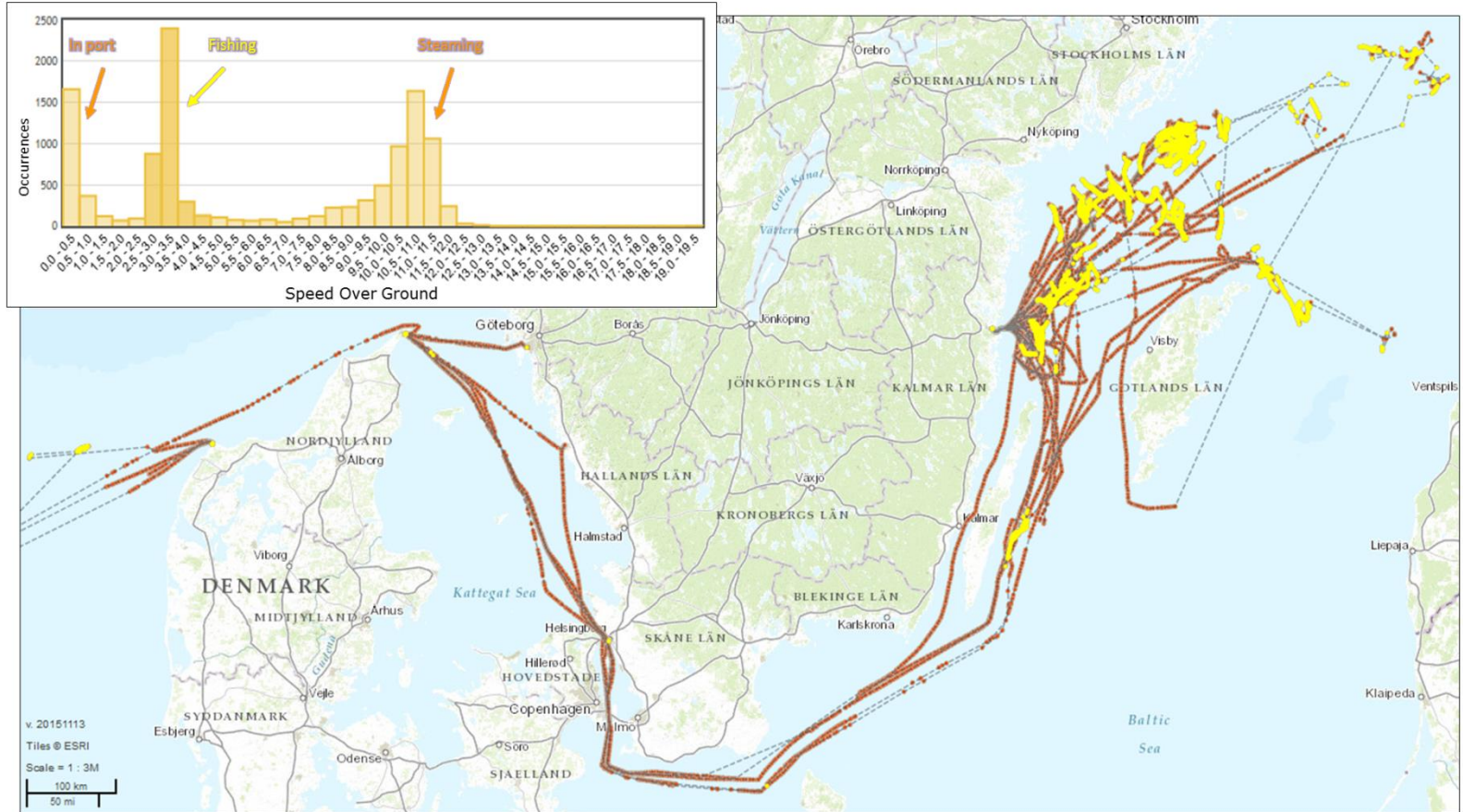
# Outline

## Data & Method

- Fishing intensity
- Data quality / coverage

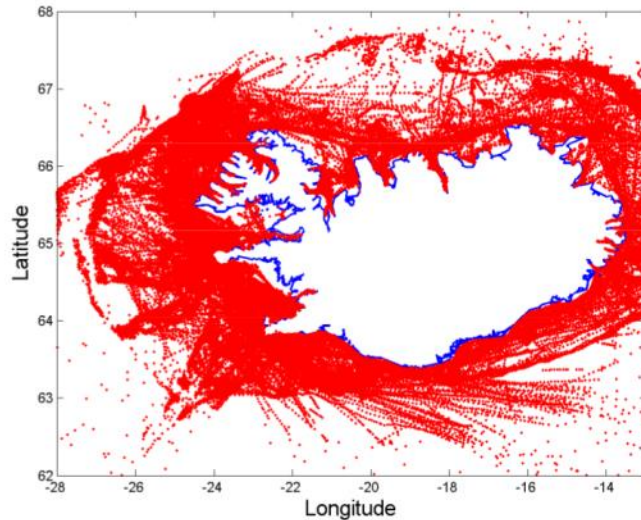
## Preliminary Results

## Conclusions

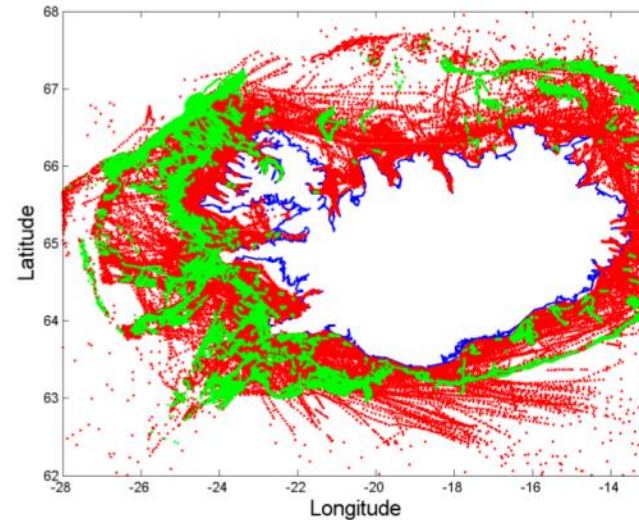


Track and speed profile of a trawler showing three clusters of velocities corresponding to in port, fishing (position highlighted in yellow) and steaming behaviours.

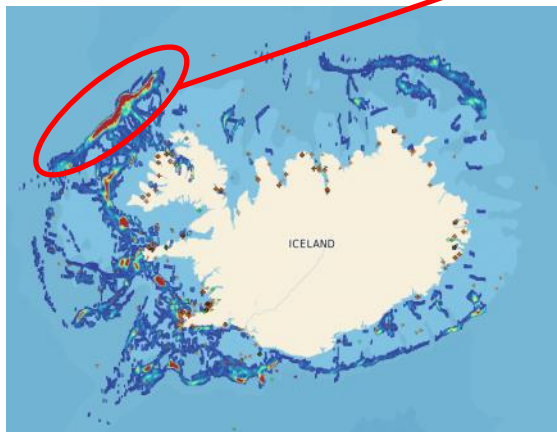
1) Raw data



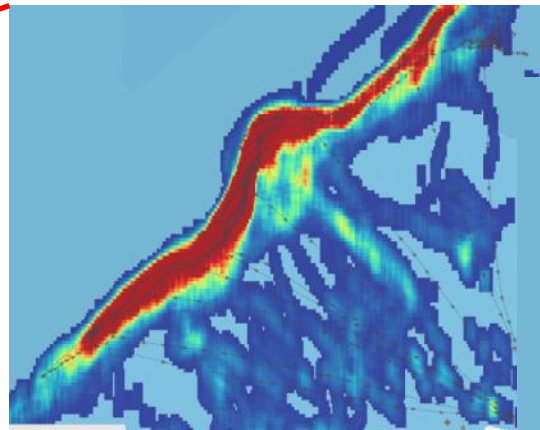
2) Fishing Activities



3) Density of Fishing Activities



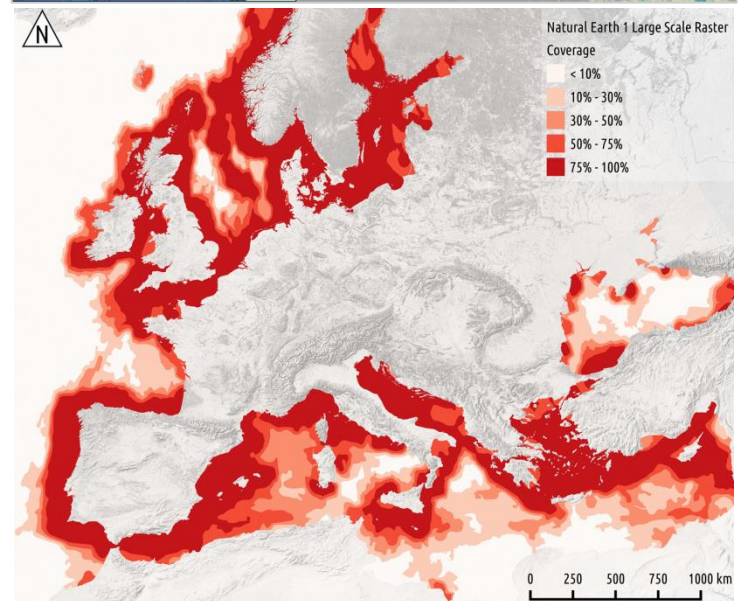
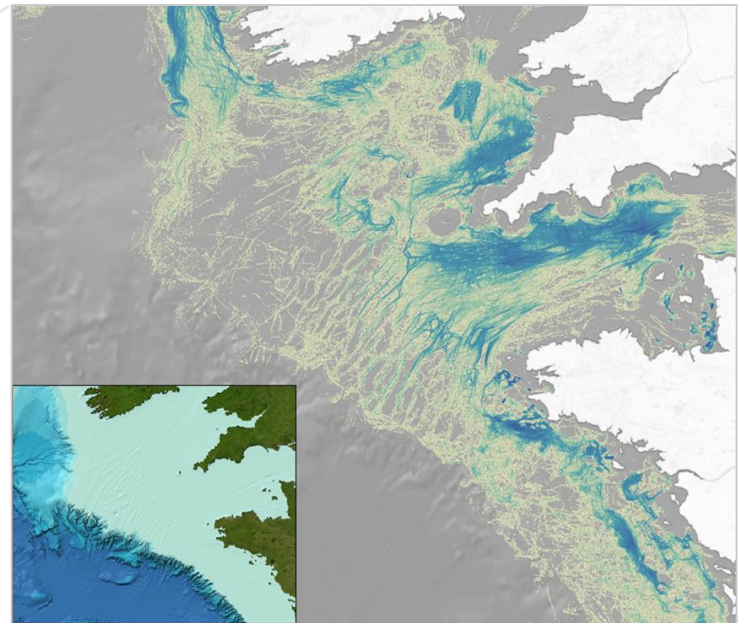
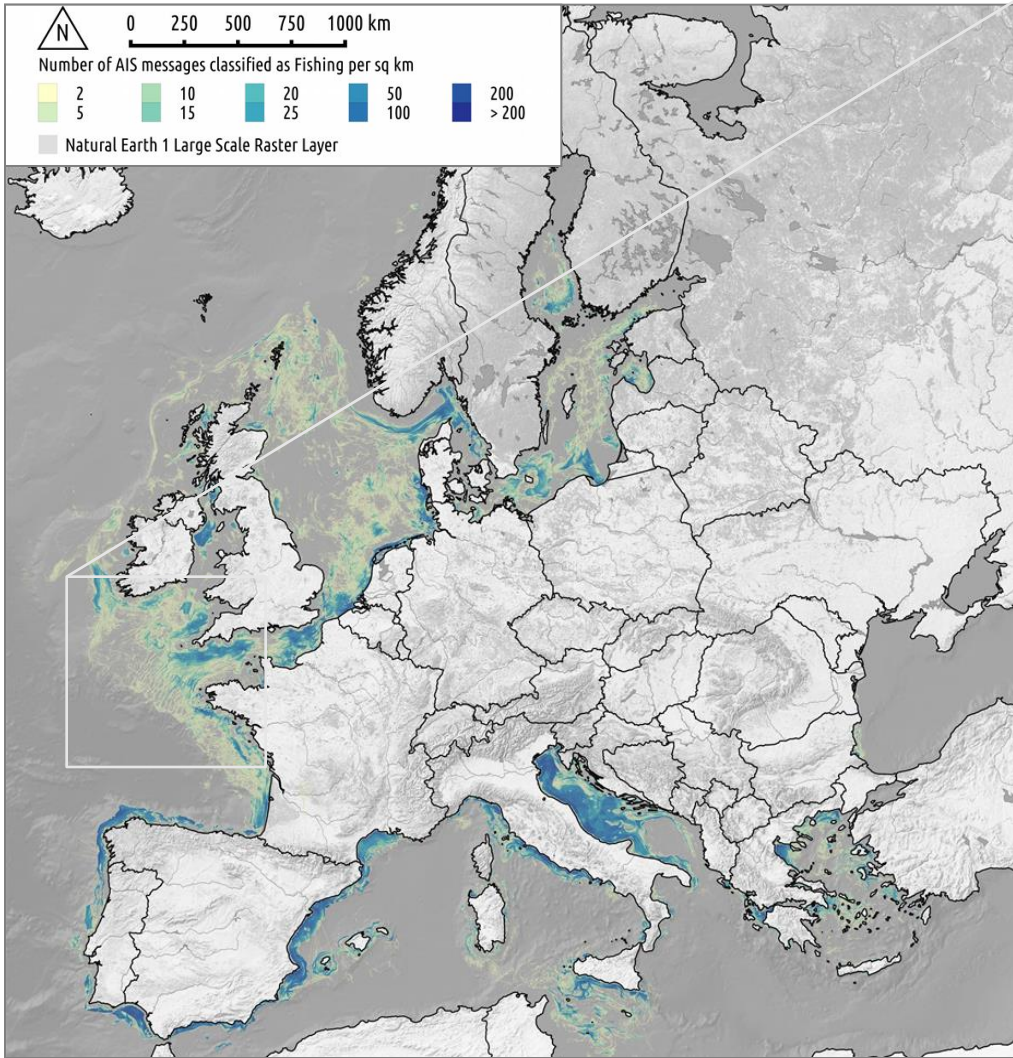
4) Real time fishing matching



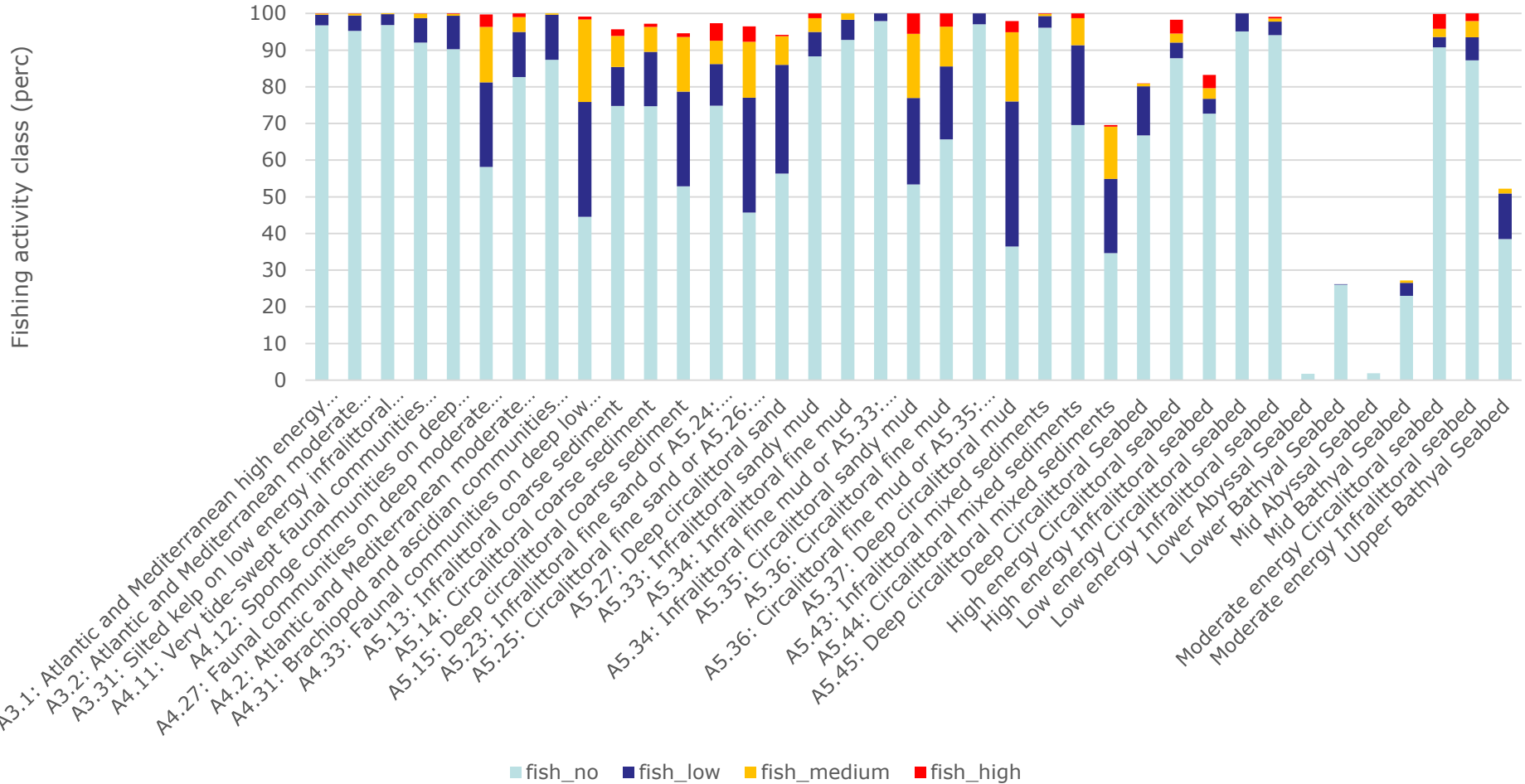


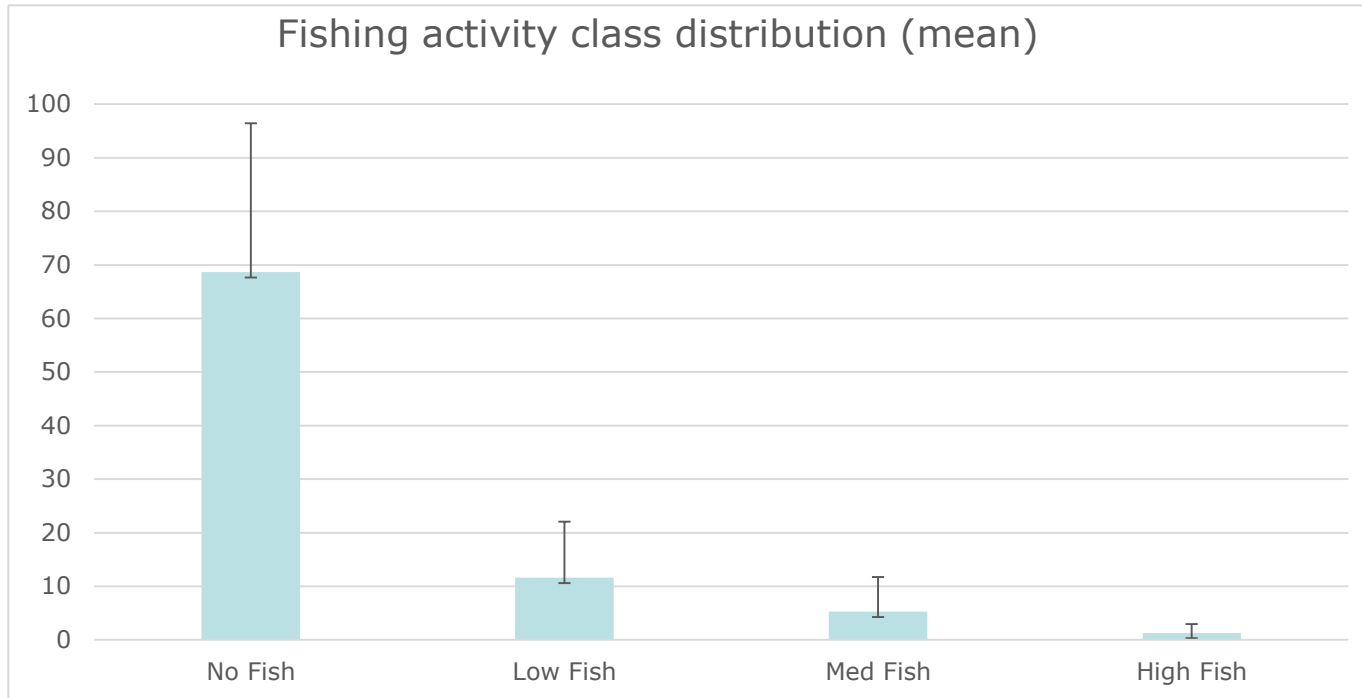
European Commission

# EU trawlers Fishing intensity



### Trawling activity per habitat typology -North Sea-





For the 32.4% of the habitats the fish\_no class is more the 90% of the data. The highest value of fish high was 5.6 and it is related to the Circalittoral sandy mud habitat type.

# Conclusions

- Need for seasonal/temporal analysis of fishing intensity layer currently showing results aggregated over one year
- Better definition of “low”, “medium” and “high” fishing activity, currently based on empirical considerations
- Add the spatial extent of seabed habitats to their fishing intensity analysis



# Stay in touch



JRC Science Hub:  
***ec.europa.eu/jrc***



Twitter and Facebook:  
***@EU\_ScienceHub***



LinkedIn:  
***european-commission-joint-research-centre***



YouTube:  
***JRC Audiovisuals***



Vimeo:  
***Science@EC***