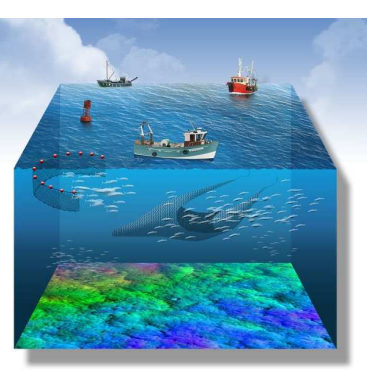


Wednesday 5 June 2013 from 15.00 to 17.00 hrs
Room: JAN 6Q1 - European Parliament, Brussels

Marine Knowledge 2020: Seabed mapping for promoting sustainable fisheries

Hosted and chaired by **Patrão Neves** MEP, Member of the Fisheries Committee
Introductory notes by **Gabriel Mato** MEP, Chair of the Fisheries Committee



Programme

15:00 - 15:20 - Opening session

- Brief introduction to the workshop
Gabriel Mato Adrover MEP (Chair of the Fisheries Committee)
- Opening remarks and moderation
Maria do Céu Patrão Neves MEP (Member of the Fisheries Committee)

- The Green Paper "Marine Knowledge 2020: from seabed mapping to ocean forecasting", including a fisheries perspective
Bernhard Friess (DG MARE, European Commission)

15:20 - 16:00 - Speakers presentations

- Using seabed mapping for protecting fragile marine habitats
Fernando Tempera (DOP - UAç, Açores, Portugal)
- Using seabed mapping for minimising impacts on fisheries resulting from the growing use of the oceans
Manuela Azevedo (IPMA, Lisboa, Portugal)
- Integrating fisheries data in seabed mapping
Patrick Berthou (IFREMER, Brest, France)
- The fisheries sector and the European Marine Observation and Data Network (EMODnet)
Iain Shepherd (DG MARE, European Commission)

16:00 - 16:20 - MEPs interventions

- The importance of research and innovation in the marine sector
Maria da Graça Carvalho MEP (Member of the Committee on Industry, Research and Energy)
- Improving the knowledge on fisheries for promoting the sustainable development of the sector
Struan Stevenson MEP (Vice-Chair of the Fisheries Committee; Substitute of the Committee on the Environment, Public Health and Food Safety)
- The environmental relevance of mapping the fishing activity
Kriton Arsenis MEP (Member of the Fisheries Committee; Member of the Committee on the Environment, Public Health and Food Safety)

16:20 - 16:55 - Debate

16:55 - 17:00 - Workshop conclusions and closing remarks

- Maria do Céu Patrão Neves** MEP (Member of the Fisheries Committee)